



SHERIDAN
MEMORIAL HOSPITAL

• Health Beat eNews •

Community open house for new transitional care location on June 8



Community Open House

Enjoy refreshments and tours to celebrate the new location for transitional care!

Monday, June 8

4-6 p.m.

2311 Shirley Cove, Sheridan

 SHERIDAN
Green House
Transitional Care

LEARN MORE >

Introducing Christopher Hellekson, MD



Introducing

Christopher Hellekson, MD

Psychiatrist

Now accepting new patients

[> LEARN MORE](#)



SHERIDAN
MEMORIAL HOSPITAL

Understanding Medicare supplements

Understanding Medicare supplements

Planning for Medicare today can help protect your health and finances tomorrow.

[LEARN MORE >](#)



SHERIDAN
MEMORIAL HOSPITAL



Behavioral Health Unit open house scheduled for June 24



SHERIDAN
MEMORIAL HOSPITAL



You're invited!

Behavioral Health Unit Open House

WEDNESDAY, JUNE 24, 2026 • 11:30 am – 1 pm

LEARN MORE >

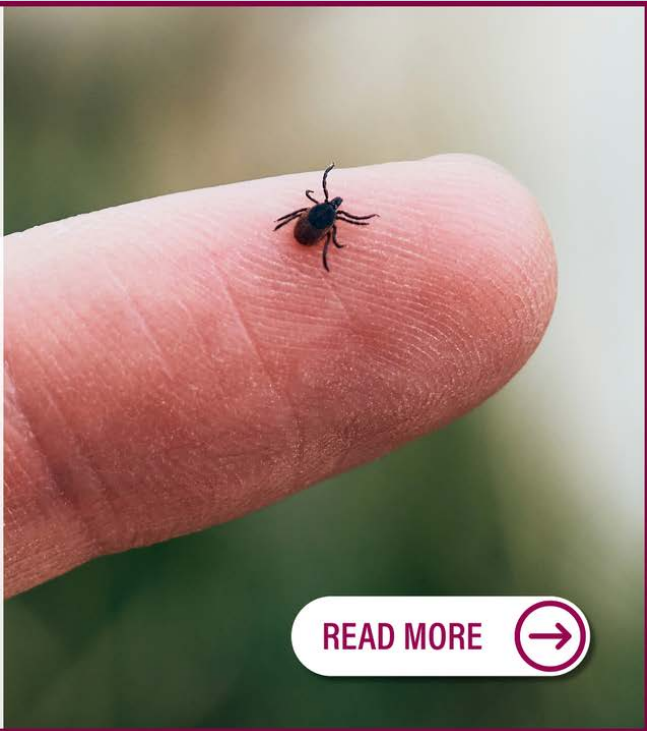
Protect yourself from ticks and tick-borne illnesses

TICK SEASON IS HERE!

Dr. Christopher Prior
shares tips for protecting
yourself from ticks and
tick-borne illnesses



SHERIDAN
MEMORIAL HOSPITAL
SameDay Health
& Imaging



READ MORE

The Muths' story



SHERIDAN
MEMORIAL HOSPITAL

The Muths' story

Local educators share positive labor and delivery experience at SMH



READ MORE



Introducing Alice Shaw, FNP-BC



Introducing

Alice Shaw
FNP-BC

SameDay Health & Imaging
Nurse Practitioner

[> LEARN MORE](#)



SHERIDAN
MEMORIAL HOSPITAL

Meet John Bass, DPT, PT, CSCS



Meet John Bass

PT, DPT, CSCS

Wyoming Rehab's newest
physical therapist

[READ MORE >](#)



SHERIDAN
MEMORIAL HOSPITAL
Wyoming Rehab

Food poisoning: Common symptoms and when to seek care



FOOD POISONING

Common symptoms and
when to seek care



CHRISTOPHER PRIOR
DO, FAAFP, CAQSM

SameDay Health &
Imaging physician

[READ MORE](#)



SHERIDAN
MEMORIAL
HOSPITAL

Advanced surgical care. *Right here at home.*

- Orthopedics
- Spine
- Women's Health
- General Surgery

[LEARN MORE >](#)



THE ANSWER IS CLEAR

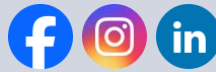
Wyoming's most advanced imaging options, here at home

SameDay Health & Imaging
1470 Sugarland Drive | Sheridan
307.673.2411

Hospital & Outpatient Center
1401 & 1533 West 5th Street | Sheridan
307.672.1045

SHERIDAN MEMORIAL HOSPITAL
sheridanhospital.org

[Considering a planned gift?](#) sheridanhospital.org [mysheridanhealth](#) [Find a Doctor](#) [307.672.1000](tel:307.672.1000)



[Manage](#) your preferences | [Opt Out](#) using TrueRemove™
Got this as a forward? [Sign up](#) to receive our future emails.
View this email [online](#).

1401 West 5th Street | Sheridan, WY 82801 US

This email was sent to .
To continue receiving our emails, add us to your address book.

emma

[Subscribe](#) to our email list.