



Consolidated Summary of Accounts May 2025

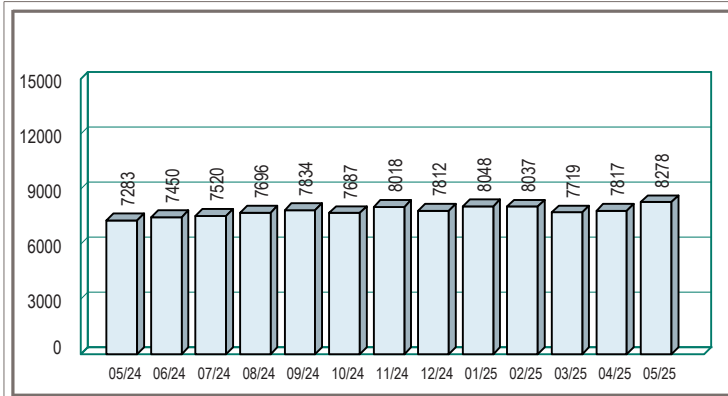
SHERIDAN COUNTY MEMORIAL
HOSPITAL FOUNDATION
LORRAINE S HUSMAN TRUST
ATTN: ADA KIRVEN
PO BOX 391
SHERIDAN WY 82801

STEAMBOAT INVESTMENT PARTNERS
2 N MAIN ST, SUITE 102
SHERIDAN, WY 82801
(800) 406-7333

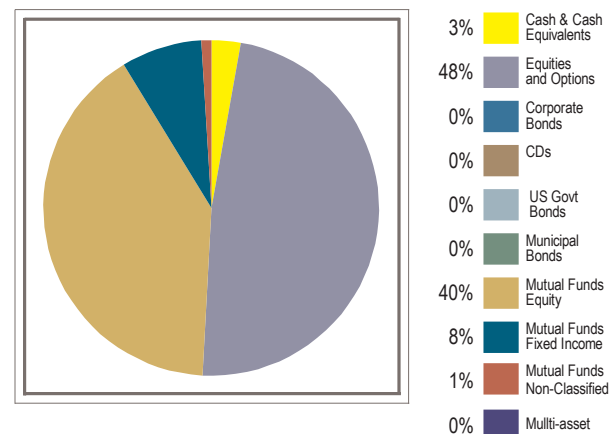
Income summary

	This Month (\$)	Year to date (\$)
Taxable dividends	6,996.29	47,969.81
Non-taxable dividends	-	-
Taxable interest	47.13	310.96
Non-taxable interest	-	-
Capital gain income	-	-
Limited partnership distributions	-	-
Other taxable income	-	-
Other non-taxable income	-	-
Total Income	7,043.42	48,280.77

Total Value Comparison (value in \$000's)



Portfolio Allocation



Analysis does not include annuities or assets not held by D.A. Davidson. Mutual fund allocation reflects the funds' dominant security type, money market, equity or fixed income. Short positions are included only to illustrate asset allocation.

Portfolio Summary

Account Title	Account Number	Cash & Cash Equivalents(\$)	Equities/ Options (\$)	Corporate Bonds (\$)	Certificates of Deposit (\$)	US Govt Bonds (\$)	Municipal Bonds (\$)	Mutual Funds (\$)	Other (\$)	Net Value (\$)	Monthly Deposits/ Withdrawals (\$)	YTD Deposits/ Withdrawals (\$)
SHERIDAN COUNTY MEMORIAL HOSPITAL FOUNDATION	83750357	27,106.44	3,300,319.37	-	-	-	-	3,302,265.14	-	6,629,690.95	-	-
SHERIDAN COUNTY MEMORIAL HOSPITAL FOUNDATION	71032980	4,405.16	412,493.56	-	-	-	-	589,166.11	-	1,006,064.83	-	15,000.00
SHERIDAN COUNTY MEMORIAL HOSPITAL FOUNDATION	22182625	3,867.68	262,751.24	-	-	-	-	375,838.81	-	642,457.73	-	-
SHERIDAN COUNTY MEMORIAL HOSPITAL FOUNDATION	81740764	-	-	-	-	-	-	-	-	-	-	(0.53)
May 2025 Totals		35,379.28	3,975,564.17	-	-	-	-	4,267,270.06	-	8,278,213.51	-	14,999.47
Previous Month's Totals		29,135.62	3,662,629.12	-	-	-	-	4,125,263.41	-	7,817,028.15	(0.53)	14,999.47
Previous Year End Totals		52,530.48	3,086,540.21	-	-	-	-	4,672,500.91	-	7,811,571.60	(10,260.93)	(23,885.02)

Account balance may not be available for accounts held outside the custody of D.A. Davidson. Values listed in the Other column include non-classified assets and annuities. These values are supplied as a service to you and were provided by an external source which we believe to be reliable but we cannot guarantee. Clients should consult the account statement provided directly by the external custodian for further information, including current account values. Any questions should be directed to the custodian's service team as indicated on the external account statement. Please see the Client Statement(s) accompanying this consolidated summary for additional important notices and disclosures.

PAGE INTENTIONALLY LEFT BLANK



D | A | DAVIDSON

Current period ending May 31, 2025

Account Name: SHERIDAN COUNTY MEMORIAL
HOSPITAL FOUNDATION
LORRAINE S HUSMAN TRUST
ATTN: ADA KIRVEN

Your Financial Professional:
STEAMBOAT INVESTMENT PARTNERS
2 N MAIN ST, SUITE 102
SHERIDAN, WY 82801

If you have more than one account with us, why not link them and receive summary information for your entire household? Contact your Financial Professional for more details.

SHERIDAN COUNTY MEMORIAL
HOSPITAL FOUNDATION
LORRAINE S HUSMAN TRUST
ATTN: ADA KIRVEN
PO BOX 391
SHERIDAN WY 82801

Recognizing World Elder Abuse Awareness Day

June 15 is World Elder Abuse Awareness Day (WEAAD) when we reflect on the many challenges Seniors face, including financial safety. WEAAD is also an opportunity to review the steps you've taken to protect yourself and/or the seniors in your life from fraud, scams, and other abuses. We can help you name a Trusted Contact, provide educational resources, and confirm your accounts are established according to your wishes. Speak with your financial professional today to take these important steps towards a secure future.

Important information – please read

Your protection is our priority. Financial fraud is an ever-increasing risk in today's world. Financial services firms, including D.A. Davidson, have processes in place to help prevent fraudulent activities in areas such as wires, debit card transactions, and checks. Please be sure to carefully review your monthly statements and any other documents promptly, to detect any unauthorized or irregular activity.

Investment and insurance products are not FDIC insured, are not bank guaranteed and may lose value.



D | A | DAVIDSON

Corporate Office, D.A. Davidson & Co. member SIPC
Davidson Building · Great Falls, Montana 59401

(406) 727-4200 · Fax (406) 791-7315 · (800) 332-5915

www.dadavidson.com

About your statement - Statements are mailed monthly to clients who have transactions during the month that affect money balances and/or security positions. Statements are mailed quarterly to all other clients provided that the account contains a money or security balance. All positions, balances and activity are trade date based on this statement. Please review these statements carefully, and keep them for your records. If you note any discrepancies in your money balance, security positions, or activity in your account, please promptly report this to your Financial Professional or the Branch Office Manager for the branch where you maintain your account. To further protect your rights, including any rights under the Securities Investor Protection Act ("SIPA"), any verbal communications about inaccuracies or discrepancies in your account should be re-confirmed in writing. Your statement will be deemed correct unless we receive notice from you within 10 days of receipt. An explanation of your statement can be found on the D.A. Davidson website or upon request from your Financial Professional. If you have questions that are not adequately answered by these explanations, your Financial Professional will be happy to answer them for you.

Dadvantage available balance - Contact your Financial Professional for specific information regarding the Dadvantage program and eligibility.

Bank Insured Deposit Program (BIDP) - Funds held in banks are obligations of those banks and not of D.A. Davidson & Co. Funds held at the money market fund are obligations of the Fund Company and not of D.A. Davidson & Co. Funds held at banks in the BIDP are eligible for insurance to applicable limits by the Federal Deposit Insurance Corporation (FDIC) provided that any additional funds above such deposit limits will be deposited in an account at a designated money market fund. BIDP account funds swept to banks are not protected by Securities Investor Protection Corporation (SIPC). Excess funds swept to a money market fund are subject to SIPC protection. More information about D.A. Davidson's BIDP and applicable limits may be obtained at www.dadavidson.com/bidp. Questions about the BIDP or your balances and account activity in the BIDP should be directed to your Financial Professional.

Estimated annual income and current estimated yield - Estimated annual income (EAI) information presented in Holdings details, when available, reflects the estimated amount you would earn on a security if your current position and its related income remained constant for a year. Current Estimated Yield (EAY), when available, reflects the current estimated annual income divided by the current market value of the security as of the statement closing date. EAI and EAY contain certain types of securities that could include a return of principal capital gains, in which case the EAI and EAY would be overstated. In addition, bond calls, maturities, reclassification of dividends, capital gains and return of capital may overstate or understate EAI or EAY. EAI and EAY are estimates and the actual income and yield might be lower or higher than the estimated amounts. EAY reflects only the income generated by an investment and it does not reflect changes in the securities' price which may fluctuate. The information used to derive these estimates is obtained from third parties we consider reliable. Past performance is no guarantee of future results.

Research ratings - Ratings from Standard & Poor's and Moody's Financial Information Services may be displayed for certain securities listed on this statement. Ratings represent the opinions of the respective research providers, are subject to change, and should not be construed as representations or guarantees of performance. We obtained this information from third parties and therefore we cannot guarantee its accuracy. Please consult your Financial Professional for an interpretation of these ratings as they relate to your portfolio.

Security pricing - While sources used for pricing publicly traded securities are considered reliable, the prices displayed on our statement may be based on actual trades, bid/ask information or vendor evaluations. As such, the prices displayed on your statement may or may not reflect actual trade prices you would receive in the current market. Pricing for non-publicly traded securities is obtained from a variety of sources, which may include issuer-provided information. D.A. Davidson does not guarantee the accuracy, reliability, completeness or attainability of this information. Investment decisions should be made only after contacting your Financial Professional. Values on Fixed Income securities are based on estimates obtained from various sources. These values assume standard market conditions, are not firm bids or offers and may vary from prices achieved in actual transactions, especially for thinly traded securities. These values are generally for transactions of \$1 million or more, which often reflect more favorable pricing than transactions in smaller amounts. You may pay more than these values if you purchase smaller amounts of securities or receive less if you sell smaller amounts of securities. Securities pricing less than .001 will reflect a price per share of "0.00", but will display a total market value. Securities pricing at N/A indicate D.A. Davidson is unable to find a price for this security as of this statement date.

Revised 09/2021.

Summary of gains and losses - Gain and loss information is provided for information purposes only and should not be used for tax preparation. Gain or loss summary information may change due to basis adjustments. Information, if presented, includes only the securities for which we have original cost information. If you know the original cost of securities not purchased at D.A. Davidson, but included in your statement, please contact your Financial Professional.

Equity Dividend Reinvestment Program - By electing to reinvest equity dividend payments on eligible securities your shares will be purchased using the executed market price on payable date. For any fractional only position liquidations either the last market close price or the market open price on trade date will be used. This activity can be seen on your Account Statement.

Margin accounts - This is a combined statement of your Margin Account of a special memorandum account maintained for you under Section 4(F)(6) of Regulation T issued by the Board of Governors of the Federal Reserve System. The permanent record of the separate account as required by Regulation T is available for your inspection upon request. If you have sold securities which you do not own under the Short Sale rule, we have, in accordance with regulations, segregated the proceeds from such transactions into your Short Sale Account. Any market increases and/or decreases will be transferred to your Margin Account weekly. These entries will be identified as "Mark to the Market" postings in the "Activity Detail" section of your statement. The Daily closing price is used in determining any appreciation or depreciation of the securities sold short. The rate of interest charged to your Margin Account is determined by the cost of borrowing money and the amount of the debit balance. The rate will change without notice as the cost of borrowing money is increased or decreased. In computing interest, all Cash and Margin Accounts are netted, with the exception of the Short Account and Dividend & Interest credits that are pending disbursement, so that the charge is made on the net daily balance.

Davidson SmartCreditSM borrowing power - Borrowing power is estimated as fifty percent of marginable securities in your investment account. Please contact your Financial Professional for applicable interest rates and loan eligibility.

Option Clients - Information with respect to commissions and other charges related to the execution of listed option transactions has been included in the confirmations of such transactions previously furnished by D.A. Davidson & Co. A summary of this information will be promptly furnished upon your request.

Municipal Securities - Continuing disclosure information regarding municipal securities is available at the Municipal Securities Rule Making Board's EMMA website at www.emma.msrb.org.

Other information - If you have elected to receive interest on Free Credit Balances reflected as "cash" in your account, please be advised that under federal securities laws, the firm is permitted to pay such interest only on balances arising as an incidence of securities trading activities. Customer Free Credit Balances may be used in this firm's business subject to the limitations of 17 CFR Section 240.15c3.3 under the Securities Exchange Act of 1934. You have the right to demand and receive from us in the course of normal business operations the delivery of: a) Any Free Credit Balances to which you are entitled. b) Any Fully-Paid Securities to which you are entitled. c) Any securities purchased on margin upon full payment of any indebtedness to us. If you participate in one of our Money Market Funds or Bank Insured Deposit Program, collected money balances from the Securities Accounts are transferred daily to begin earning dividends or interest as soon as possible. You may also make direct deposits and write checks with these accounts. You have the right at any time to demand the liquidation of any Money Market Fund or Bank Insured Deposit Program and have the monies held as a free credit balance of cash within your account.

All securities held by D.A. Davidson & Co. for you, but which are not registered in your name, are commingled with identical securities being held for other clients. In the event any securities so held are "called" by the issuer, we will determine the beneficial ownership thereof by an impartial random selection system as required by Exchange rules.

Assets not held at D.A. Davidson & Co. may not be covered by the Securities Investor Protection Corporation (SIPC). They are reflected on this statement solely as a service to the customer.

A financial statement of this firm is available for your personal inspection at our office or a copy of it will be mailed upon your written request.

When disbursing funds to our clients, it is our policy to issue all payments on the bank of our choice, unless the client requests otherwise.

"Senior Vice President," "Vice President," and "Associate Vice President" are honorary titles given to certain Financial Professionals of D.A. Davidson & Co. in recognition of their experience in the securities industry and their commitment to customer service.



D | A | DAVIDSON

May 1 - May 31, 2025

SHERIDAN COUNTY MEMORIAL
HOSPITAL FOUNDATION
BISHOP ENDOWMENT
ATTN: ADA KIRVEN
PO BOX 391
SHERIDAN WY 82801

Advisory Information:
PARAGON
STEAMBOAT INVESTMENT
PARTNERS

Account Number: 22182625

Prestige Status: Prestige Elite

STEAMBOAT INVESTMENT PARTNERS
2 N MAIN ST, SUITE 102
SHERIDAN, WY 82801
(800) 406-7333

Value of your account

	Current Period (\$)	Current Year to date (\$)
Total beginning account value	613,718.64	606,172.24
Change in the value of your account	28,739.09	36,285.49
Closing account value as of 05/31/2025	642,457.73	642,457.73

Account values include all assets and outstanding margin and/or loan balances.
Please see important disclosures under the section titled "Bank Insured Deposit Program" in this statement.

Your investment objectives and risk tolerance

Investment objective	Growth & Income
Risk tolerance	Moderate

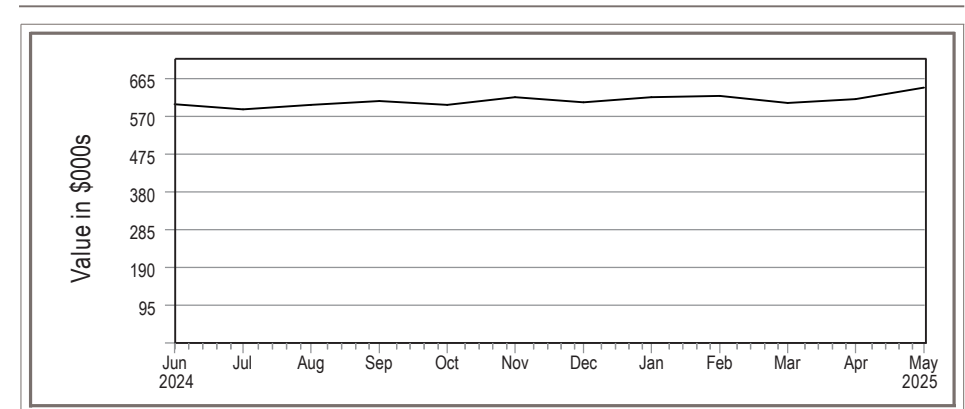
If the information in this section needs to be updated, contact your Financial Professional.

Davidson SmartCreditSM borrowing power and loan balance

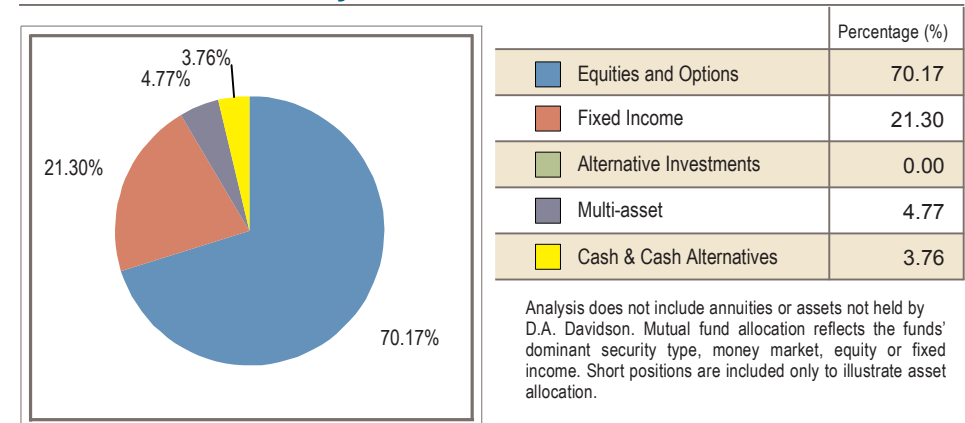
	Available Funds (\$)
Davidson SmartCredit SM	—
Loan balance	—

Contact your Financial Professional about the Davidson SmartCreditSM margin loan program. For more details, please see the Disclosure and Information page.

Value over time



Asset allocation analysis



Activity summary

	Current Period (\$)	Year to date (\$)
Deposits, security transfers received	—	—
Income received	861.20	5,216.78
Other funds credited	—	—
Sales	—	202,574.09
Checks and bill payments	—	—
Interest charges	—	—
Withdrawals, security transfers delivered	—	—
Foreign and/or federal tax withheld	(2.82)	(2.82)
Purchases	(75.39)	(206,259.13)
Expenses	—	(1,501.09)

For detailed information on activity occurring within this account see the Activity Details.

For detailed information about our brokerage and investment advisory services and the products we recommend, please visit www.dadavidson.com/disclosures where you will find our Form CRS - Client Relationship Summary, Regulation Best Interest Disclosures and various Product and Services Disclosures.

Income summary

	Current Period (\$)	Year to date (\$)
Taxable dividends	855.96	5,191.49
Non-taxable dividends	—	—
Taxable interest	5.24	25.29
Non-taxable interest	—	—
Capital gain income	—	—
Limited partnership distributions	—	—
Other taxable income	—	—
Other non-taxable income	—	—
Total Income	861.20	5,216.78
Taxable accrued income	—	—
Non-taxable accrued income	—	—

Taxable or non-taxable designation is determined at the security level, not at the account level. For detailed information on income received see the Activity Details.

Accrued income for purchases or sales is separately noted in the income summary and is included in the purchases and sales totals in the Activity summary. For details on the accrued income, please see the trade confirmation.

Holdings summary

	on April 30 (\$)	on May 31 (\$)
Cash and cash equivalents	3,084.69	3,867.68
Equities/options	241,036.92	262,751.24
Corporate bonds	—	—
Municipal bonds	—	—
Certificates of deposit	—	—
US Government bonds	—	—
Mutual funds	369,597.03	375,838.81
Non-Classified & annuities	—	—
Total assets	613,718.64	642,457.73

Cash & cash equivalent information

	Available Funds (\$)	Rate (%)
Cash Equivalent Funds/Money Market	—	—
Bank Insured Deposit Program	3,847.55	1.65
Cash	20.13	—
Total cash and cash equivalents	3,867.68	—

For details on this section see Disclosures.

DADVANTAGE

	Available Funds (\$)
Available for checkwriting and debit card transactions	—

Available balance may not accurately reflect recent deposits or withdrawals. Please see your Financial Professional for your most accurate available funds. For more details, please see the Disclosure and Additional Information section. Not all checkwriting programs are included in this section.

Gain/loss summary

	Realized gains and losses		Unrealized gains and losses
	on May 31 (\$)	Year to date (\$)	
Short term	—	50.73	20,969.76
Long term	—	(6,912.55)	101,809.24
Total	—	(6,861.82)	122,779.00

Holdings details

This section reflects the impact of positions purchased/sold on a trade date basis, and will include positions purchased and omit positions sold in the current month. Please see the Pending Trades section for more information. The "Market Value" and "Unrealized Gain/(Loss)" figures shown are representative values as of the last business day of the statement period indicated, which may not reflect the value that could actually be obtained in the market. For more details on pricing, cost basis, estimated annual income and current estimated yield see the disclosures section of the statement.

New Treasury regulations require that we report on Form 1099-B, after the close of the tax year, your adjusted cost basis and classify the gain or loss as either long-term or short-term on the sale of covered securities acquired on or after January 1, 2011. These regulations also require that we make basis adjustments due to wash sales, certain corporate actions and transfer by gift or inheritance, which will be reflected on your form 1099-B. Cost basis is reflected on monthly statements for informational purposes only and should not be used in the preparation of your income tax returns. Cost information is presented as a general guide to portfolio performance. Please refer to the disclosures section of this statement for additional information. An "M" in the purchase date indicates a position is made up of multiple trades/tax lots.

Quantity	Holding Description	Security Identifier Ratings	Purchase Date	Cost Basis (\$)	Total Cost Basis (\$)	Market Value (\$)	Total Market Value (\$)	Gain/Loss (\$)	Est. Annual Income (\$)	Current Yield (%)
	Equities / options									
10.0000	ACCENTURE PLC IRELAND CL A	ACN	M	242.712	2,427.12	316.820	3,168.20	741.08	59.20	1.87
17.0000	ADOBE INC	ADBE	M	429.569	7,302.67	415.090	7,056.53	(246.14)	—	—
67.0000	ADVANCED MICRO DEVICES INC	AMD	4/10/25	86.759	5,812.87	110.730	7,418.91	1,606.04	—	—
56.0000	ALPHABET INC CL C	GOOG	M	112.636	6,307.60	172.850	9,679.60	3,372.00	47.04	0.48
65.0000	AMAZON.COM INC	AMZN	M	136.823	8,893.52	205.010	13,325.65	4,432.13	—	—
62.0000	APPLE INC	AAPL	M	144.314	8,947.47	200.850	12,452.70	3,505.23	64.48	0.52
9.0000	ASML HOLDING NV NY REGISTRY SHS NEW 2012	ASML	4/10/25	639.013	5,751.12	736.770	6,630.93	879.81	60.55	0.91
20.0000	AUTOMATIC DATA PROCESSING INC	ADP	M	172.405	3,448.11	325.530	6,510.60	3,062.49	123.20	1.89
68.0000	BROADCOM INC	AVGO	M	65.540	4,456.75	242.070	16,460.76	12,004.01	160.48	0.97
21.0000	CHUBB LTD	CB	M	130.765	2,746.06	297.200	6,241.20	3,495.14	81.48	1.30
9.0000	COSTCO WHOLESALE CORP	COST	M	410.871	3,697.84	1,040.180	9,361.62	5,663.78	46.80	0.50
16.0000	CROWDSTRIKE HOLDINGS INC CL A	CRWD	M	320.114	5,121.83	471.370	7,541.92	2,420.09	—	—
10.0000	CUMMINS INC	CMI	9/10/21	235.092	2,350.92	321.480	3,214.80	863.88	72.80	2.26
32.0000	GENERAL DYNAMICS CORP	GD	4/10/25	266.499	8,527.96	278.490	8,911.68	383.72	192.00	2.15
39.0000	JOHNSON & JOHNSON	JNJ	M	144.774	5,646.18	155.210	6,053.19	407.01	202.80	3.35
26.0000	JPMORGAN CHASE & CO	JPM	M	127.771	3,322.04	264.000	6,864.00	3,541.96	145.60	2.12
10.0000	MCDONALDS CORP	MCD	12/11/23	287.760	2,877.60	313.850	3,138.50	260.90	70.80	2.25
31.0000	MICROSOFT CORP	MSFT	M	238.919	7,406.50	460.360	14,271.16	6,864.66	102.92	0.72

Holdings details (continued)

Quantity	Holding Description	Security Identifier Ratings	Purchase Date	Cost Basis (\$)	Total Cost Basis (\$)	Market Value (\$)	Total Market Value (\$)	Gain/Loss (\$)	Est. Annual Income (\$)	Current Yield (%)
	Equities / options (continued)									
6.0000	NETFLIX INC	NFLX	M	549.450	3,296.70	1,207.230	7,243.38	3,946.68	—	—
82.0000	NVIDIA CORP	NVDA	M	52.488	4,304.00	135.130	11,080.66	6,776.66	3.28	0.03
66.0000	ORACLE CORP	ORCL	4/10/25	131.124	8,654.16	165.530	10,924.98	2,270.82	132.00	1.21
100.0000	PALANTIR TECHNOLOGIES INC CL A	PLTR	4/10/25	85.870	8,586.98	131.780	13,178.00	4,591.02	—	—
108.0000	REALTY INCOME CORP	O	M	63.136	6,818.72	56.620	6,114.96	(703.76)	347.97	5.69
13.0000	S&P GLOBAL INC	SPGI	M	354.570	4,609.41	512.860	6,667.18	2,057.77	49.92	0.75
11.0000	SERVICENOW INC	NOW	M	734.874	8,083.62	1,011.090	11,121.99	3,038.37	—	—
33.0000	STARBUCKS CORP	SBUX	M	81.078	2,675.59	83.950	2,770.35	94.76	80.52	2.91
17.0000	STRYKER CORP	SYK	M	204.880	3,482.96	382.640	6,504.88	3,021.92	57.12	0.88
58.0000	TAIWAN SEMICONDUCTOR MANUFACTURING CO LTD SPON ADR	TSM	4/10/25	148.968	8,640.14	193.320	11,212.56	2,572.42	165.90	1.48
86.0000	UBER TECHNOLOGIES INC	UBER	12/26/24	61.618	5,299.12	84.160	7,237.76	1,938.64	—	—
81.0000	VALERO ENERGY CORP	VLO	M	79.687	6,454.65	128.970	10,446.57	3,991.92	366.12	3.50
18.0000	VISA INC CL A	V	M	233.655	4,205.79	365.190	6,573.42	2,367.63	42.48	0.65
20.0000	ZOETIS INC CL A	ZTS	M	139.158	2,783.17	168.630	3,372.60	589.43	40.00	1.19
	Subtotal - Equities / options				172,939.17		262,751.24	89,812.07	2,715.46	

Holdings details (continued)

Quantity	Holding Description	Security Identifier Ratings	Purchase Date	Cost Basis (\$)	Total Cost Basis (\$)	Market Value (\$)	Total Market Value (\$)	Gain/Loss (\$)	Gain/Loss (\$) Client Investment	Est. Annual Income (\$)	Current Yield (%)
	Mutual Funds										
	ABRDN BLOOMBERG ALL COMMODITY STRATEGY K-1 FREE ETF	BCI									
1,007.0000	Client investment		M	22.814	22,973.74	20.300	20,442.10	(2,531.64)	(2,531.64)	655.25	3.20
	CAPITAL GROUP FIXED CORE PLUS INCOME ETF	CGCP									
1,313.0000	Client investment		4/10/25	21.958	28,831.44	22.190	29,135.47	304.03	304.03	1,485.79	5.10
	CAPITAL GROUP FIXED INCOME U S MULTI SECTOR INCOME ETF	CGMS									
546.0000	Client investment		12/26/24	27.186	14,843.75	27.230	14,867.58	23.83	23.83	847.28	5.70
	CAPITAL GROUP CORE BOND ETF	CGCB									
1,782.0000	Client investment		M	25.801	45,977.32	26.000	46,332.00	354.68	354.68	1,968.39	4.25
	ISHARES CORE U S AGGREGATE BOND ETF	AGG									
474.0000	Client investment		4/10/25	97.308	46,124.18	98.100	46,499.40	375.22	375.22	1,719.81	3.70
	ISHARES CORE MSCI EMERGING MARKETS ETF	IEMG									
169.0000	Client investment		M	44.035	7,441.93	56.690	9,580.61	2,138.68	2,138.68	282.56	2.95
	PACER TRENDPILOT U S LARGE CAP ETF	PTLC									
356.0000	Client investment		M	54.779	19,501.37	48.300	17,194.80	(2,306.57)	(2,306.57)	126.66	0.74
	VANGUARD S&P MID CAP 400 INDEX ETF	IVOO									
96.0000	Client investment		M	66.742	6,407.24	101.610	9,754.56	3,347.32	3,347.32	142.75	1.46
	VANGUARD FTSE ALL WORLD EX US ETF	VEU									
307.0000	Client investment		M	44.194	13,567.70	65.230	20,025.61	6,457.91	6,457.91	563.95	2.82

Holdings details (continued)

Quantity	Holding Description	Security Identifier Ratings	Purchase Date	Cost Basis (\$)	Total Cost Basis (\$)	Market Value (\$)	Total Market Value (\$)	Gain/Loss (\$)	Gain/Loss (\$) Client Investment	Est. Annual Income (\$)	Current Yield (%)
	Mutual Funds (continued)										
	VANGUARD RUSSELL 2000 INDEX FD ETF SHARES	VTWO									
199.0000	Client investment		M	67.826	13,497.31	82.990	16,515.01	3,017.70	3,017.70	229.84	1.39
	VANGUARD S&P 500 INDEX ETF	VOO									
49.0000	Client investment		M	425.259	20,837.68	541.760	26,546.24	5,708.56	5,708.56	341.67	1.29
	VANGUARD REAL ESTATE INDEX ETF	VNQ									
354.0000	Client investment		M	84.994	30,087.89	89.320	31,619.28	1,531.39	1,531.39	1,286.08	4.07
	CAPITAL INCOME BUILDER CL F2	CAIFX									
123.3680	Client investment		M	60.791	7,499.65	74.570	9,199.55	1,699.91	1,699.90	—	—
44.4280	Total reinvested		M	64.366	2,859.66	74.570	3,312.99	453.33	3,312.99		
167.7960	Total quantity				10,359.31		12,512.54	2,153.24	5,012.89	423.60	3.38
	INTERNATIONAL GROWTH & INCOME CL F2	IGFFX									
245.8210	Client investment		M	31.860	7,831.99	41.820	10,280.23	2,448.25	2,448.24	—	—
71.9840	Total reinvested		M	35.216	2,535.00	41.820	3,010.37	475.38	3,010.37		
317.8050	Total quantity				10,366.99		13,290.60	2,923.63	5,458.61	333.09	2.51
	JPMORGAN MID CAP GROWTH CL I	HLGEX									
123.8380	Client investment		M	37.240	4,611.71	50.580	6,263.72	1,652.02	1,652.01	—	—
9.7480	Total reinvested		M	51.311	500.18	50.580	493.05	(7.13)	493.05		
133.5860	Total quantity				5,111.89		6,756.77	1,644.89	2,145.06	—	—
	MFS INTL GROWTH CL I	MQGIX									
249.5710	Client investment		M	38.151	9,521.33	53.160	13,267.20	3,745.86	3,745.87	—	—
58.2460	Total reinvested		M	46.274	2,695.29	53.160	3,096.35	401.06	3,096.35		
307.8170	Total quantity				12,216.62		16,363.55	4,146.92	6,842.22	201.89	1.23

Holdings details (continued)

Quantity	Holding Description	Security Identifier Ratings	Purchase Date	Cost Basis (\$)	Total Cost Basis (\$)	Market Value (\$)	Total Market Value (\$)	Gain/Loss (\$)	Gain/Loss (\$) Client Investment	Est. Annual Income (\$)	Current Yield (%)
	Mutual Funds (continued)										
	T ROWE PRICE CAP APPREC INSTL CL	TRAIX									
450.8660	Client investment		M	27.874	12,567.27	35.670	16,082.39	3,515.12	3,515.12	—	—
57.7140	Total reinvested		M	32.863	1,896.64	35.670	2,058.65	162.02	2,058.65		
508.5800	Total quantity				14,463.91		18,141.04	3,677.14	5,573.77	428.88	2.36
	VANGUARD FEDERAL MONEY MARKET INVESTOR CL	VMFXX									
15,233.0000	Client investment		M	1.000	15,233.00	1.000	15,233.00	—	—	—	—
5,028.6500	Total reinvested		M	1.000	5,028.65	1.000	5,028.65	—	5,028.65		
20,261.6500	Total quantity				20,261.65		20,261.65	—	5,028.65	844.91	4.17
	Subtotal - Mutual Funds				342,871.92		375,838.81	32,966.93	48,482.31	11,882.40	

Included in "Client Investment" are initial purchases and shares not obtained at D.A. Davidson or shares received as a transfer. "Total reinvested" is the total of all dividends and capital gains reinvested. Gain/Loss Client Investment represents a full gain or loss on the total reinvested shares.

	Total Cost Basis (\$)	Total Market Value (\$)	Gain/Loss (\$)	Estimated Annual Income (\$)
Total security value				
	515,811.09	638,590.05	122,779.00	14,597.86

Activity details

Date	Activity	Quantity	Price (\$)	Description	Total (\$)	Cash (\$)	Margin (\$)	Money Market (\$)	Bank Insured Deposit (\$)
	Opening Balance				3,084.69	56.56	—	—	3,028.13
5/1/25	DIVIDEND		0.0000	CAPITAL GROUP FIXED CORE PLUS INCOME ETF 050125 1,313 (14020Y102)	139.12	139.12	—	—	—
5/1/25	DIVIDEND		0.0000	CAPITAL GROUP CORE BOND ETF 050125 1,782 (14020Y508)	173.24	173.24	—	—	—

Activity details (continued)

Date	Activity	Quantity	Price (\$)	Description	Total (\$)	Cash (\$)	Margin (\$)	Money Market (\$)	Bank Insured Deposit (\$)
5/1/25	DIVIDEND		0.0000	CAPITAL GROUP FIXED INCOME U S MULTI SECTOR INCOME ETF 050125 546 (14020Y300)	78.91	78.91	—	—	—
5/1/25	DIVIDEND		0.0000	VANGUARD FEDERAL MONEY MARKET INVESTOR CL 043025 20,186.26000 (922906300)	75.39	75.39	—	—	—
5/1/25	REINVEST DIV	75.39	0.0000	VANGUARD FEDERAL MONEY MARKET INVESTOR CL REINVEST AT 1.000 (922906300)	(75.39)	(75.39)	—	—	—
5/1/25	DIVIDEND		0.0000	VIRTUS NEWFLEET MULTI SECTOR SHORT TERM BOND CL I 043025 13,278.70600 (92828R610)	81.44	81.44	—	—	—
5/1/25	Cash Sweep Out		1.0000	BANK INSD DEPOSIT ACCT FDIC INSURED	—	(56.56)	—	—	—
5/1/25	BIDP Sweep In		1.0000	BANK INSD DEPOSIT ACCT FDIC INSURED	—	—	—	—	56.56
5/2/25	Cash Sweep Out		1.0000	BANK INSD DEPOSIT ACCT FDIC INSURED	—	(472.71)	—	—	—
5/2/25	BIDP Sweep In		1.0000	BANK INSD DEPOSIT ACCT FDIC INSURED	—	—	—	—	472.71
5/5/25	INTEREST		0.0000	BANK INSD DEPOSIT ACCT FDIC INSURED 050525 3,558	0.62	—	—	—	0.62
5/6/25	DIVIDEND		0.0000	ASML HOLDING NV NY REGISTRY SHS NEW 2012 050625 9 (N07059210)	18.81	18.81	—	—	—
5/6/25	DIVIDEND		0.0000	ISHARES CORE U S AGGREGATE BOND ETF 050625 474 (464287226)	152.26	152.26	—	—	—
5/6/25	WITHHOLDING		0.0000	FRGN-W/H @ SOURCE ASML HLDG NV NYRS NEW (N07059210)	(2.82)	(2.82)	—	—	—
5/7/25	Cash Sweep Out		1.0000	BANK INSD DEPOSIT ACCT FDIC INSURED	—	(168.25)	—	—	—

Activity details (continued)

Date	Activity	Quantity	Price (\$)	Description	Total (\$)	Cash (\$)	Margin (\$)	Money Market (\$)	Bank Insured Deposit (\$)
5/7/25	BIDP Sweep In		1.0000	BANK INSD DEPOSIT ACCT FDIC INSURED	—	—	—	—	168.25
5/9/25	DIVIDEND		0.0000	GENERAL DYNAMICS CORP 050925 32 (369550108)	48.00	48.00	—	—	—
5/12/25	Cash Sweep Out		1.0000	BANK INSD DEPOSIT ACCT FDIC INSURED	—	(48.00)	—	—	—
5/12/25	BIDP Sweep In		1.0000	BANK INSD DEPOSIT ACCT FDIC INSURED	—	—	—	—	48.00
5/15/25	DIVIDEND		0.0000	ACCENTURE PLC IRELAND CL A 051525 8 (G1151C101)	11.84	11.84	—	—	—
5/15/25	DIVIDEND		0.0000	APPLE INC 051525 62 (037833100)	16.12	16.12	—	—	—
5/15/25	DIVIDEND		0.0000	REALTY INCOME CORP 051525 108 (756109104)	29.00	29.00	—	—	—
5/16/25	DIVIDEND		0.0000	COSTCO WHOLESALE CORP 051625 9 (22160K105)	11.70	11.70	—	—	—
5/16/25	Cash Sweep Out		1.0000	BANK INSD DEPOSIT ACCT FDIC INSURED	—	(56.96)	—	—	—
5/16/25	BIDP Sweep In		1.0000	BANK INSD DEPOSIT ACCT FDIC INSURED	—	—	—	—	56.96
5/19/25	Cash Sweep Out		1.0000	BANK INSD DEPOSIT ACCT FDIC INSURED	—	(11.70)	—	—	—
5/19/25	BIDP Sweep In		1.0000	BANK INSD DEPOSIT ACCT FDIC INSURED	—	—	—	—	11.70
5/30/25	DIVIDEND		0.0000	STARBUCKS CORP 053025 33 (855244109)	20.13	20.13	—	—	—
5/30/25	INTEREST		0.0000	BANK INSD DEPOSIT ACCT FDIC INSURED 053025 3,847	4.62	—	—	—	4.62
				Totals	3,867.68	20.13	—	—	3,847.55

Bank Insured Deposit Program

Program Balances	Current Value (\$)	Program Balances	Current Value (\$)
US Bank National Association	3,847.55		
Total BIDP Deposits			3,847.55

As of the end of the period covered by this statement you had funds in the amounts and at the bank(s)/money market fund shown above relating to the Bank Insured Deposit Program (BIDP). For other information relating to the BIDP, see the Cash and Cash Equivalent information on page two of this statement for the interest rate earned during the period and the activity details section of this statement for the total interest earned and credited during the period. Funds held in the banks shown above are obligations of those banks and not of D.A. Davidson & Co. Funds held at a money market fund are obligations of the Fund Company and not of D.A. Davidson & Co. Funds held at banks in the BIDP are eligible for insurance to applicable limits by the Federal Deposit Insurance Corporation (FDIC), provided that any additional funds above such deposit limits will be deposited in an account at a designated money market fund. BIDP account funds swept to banks are not protected by Securities Investor Protection Corporation (SIPC). Excess funds swept to a money market fund are subject to SIPC protection. More information about D.A. Davidson's BIDP and applicable limits may be obtained at www.dadavidson.com/bidp. Questions about the BIDP or your balances and account activity in the BIDP should be directed to your Financial Professional.

Below is a full list of banks in the Bank Insured Deposit Program (BIDP) including banks leaving or joining the program. To see which banks are available to your account and the order in which funds are placed in the banks, you will find the most current list at this link: (dadavidson.com/Portals/0/bus-wm/bank%20list/priority_bank_list.pdf)

Bank of Baroda	Bank of East Asia Ltd	Bank of India	Bank of New York Mellon
C3bank NA	Cadence Bank	East West Bank	First Internet Bank of Indiana
Glacier Bank	Goldman Sachs Bank USA	HSBC Bank USA NA	Merrick Bank
Morgan Stanley Bank NA	Morgan Stanley Private Bank	SMBC Manubank	State Bank of India
Synovus Bank	Toyota Financial Savings Bank	TriState Capital Bank	Truist Bank
Umpqua Bank	US Bank NA	Valley National Bank	WEX Bank

Trusted Contact

Name	Phone
NOT PROVIDED	Please Provide

If no Trusted Contact information is listed, or the information on file has changed, please contact your Financial Professional.

By providing information about trusted contact person(s), you authorize us to contact the trusted contact person(s) and disclose information about your account to those person(s) in the following circumstances: To address possible financial exploitation, to confirm the specifics of your current contact information, health status, or the identity of any legal guardian, executor, trustee or holder of a power of attorney, or as otherwise permitted by FINRA Rule 2165 (Financial Exploitation of Specified Adults). This designation does not provide trading authority or the ability to act as attorney-in-fact. Please note, your trusted contact must be 18 years or older, cannot be an owner, trustee or attorney-in-fact on the account, or your Financial Professional.

* * * END OF STATEMENT * * *



D | A | DAVIDSON

Current period ending May 31, 2025

Account Name: SHERIDAN COUNTY MEMORIAL
HOSPITAL FOUNDATION
LORRAINE S HUSMAN TRUST
ATTN: ADA KIRVEN

Your Financial Professional:
STEAMBOAT INVESTMENT PARTNERS
2 N MAIN ST, SUITE 102
SHERIDAN, WY 82801

If you have more than one account with us, why not link them and receive summary information for your entire household? Contact your Financial Professional for more details.

SHERIDAN COUNTY MEMORIAL
HOSPITAL FOUNDATION
LORRAINE S HUSMAN TRUST
ATTN: ADA KIRVEN
PO BOX 391
SHERIDAN WY 82801

Recognizing World Elder Abuse Awareness Day

June 15 is World Elder Abuse Awareness Day (WEAAD) when we reflect on the many challenges Seniors face, including financial safety. WEAAD is also an opportunity to review the steps you've taken to protect yourself and/or the seniors in your life from fraud, scams, and other abuses. We can help you name a Trusted Contact, provide educational resources, and confirm your accounts are established according to your wishes. Speak with your financial professional today to take these important steps towards a secure future.

Important information – please read

Your protection is our priority. Financial fraud is an ever-increasing risk in today's world. Financial services firms, including D.A. Davidson, have processes in place to help prevent fraudulent activities in areas such as wires, debit card transactions, and checks. Please be sure to carefully review your monthly statements and any other documents promptly, to detect any unauthorized or irregular activity.

Investment and insurance products are not FDIC insured, are not bank guaranteed and may lose value.



D | A | DAVIDSON

Corporate Office, D.A. Davidson & Co. member SIPC
Davidson Building · Great Falls, Montana 59401

(406) 727-4200 · Fax (406) 791-7315 · (800) 332-5915

www.dadavidson.com

About your statement - Statements are mailed monthly to clients who have transactions during the month that affect money balances and/or security positions. Statements are mailed quarterly to all other clients provided that the account contains a money or security balance. All positions, balances and activity are trade date based on this statement. Please review these statements carefully, and keep them for your records. If you note any discrepancies in your money balance, security positions, or activity in your account, please promptly report this to your Financial Professional or the Branch Office Manager for the branch where you maintain your account. To further protect your rights, including any rights under the Securities Investor Protection Act ("SIPA"), any verbal communications about inaccuracies or discrepancies in your account should be re-confirmed in writing. Your statement will be deemed correct unless we receive notice from you within 10 days of receipt. An explanation of your statement can be found on the D.A. Davidson website or upon request from your Financial Professional. If you have questions that are not adequately answered by these explanations, your Financial Professional will be happy to answer them for you.

Dadvantage available balance - Contact your Financial Professional for specific information regarding the Dadvantage program and eligibility.

Bank Insured Deposit Program (BIDP) - Funds held in banks are obligations of those banks and not of D.A. Davidson & Co. Funds held at the money market fund are obligations of the Fund Company and not of D.A. Davidson & Co. Funds held at banks in the BIDP are eligible for insurance to applicable limits by the Federal Deposit Insurance Corporation (FDIC) provided that any additional funds above such deposit limits will be deposited in an account at a designated money market fund. BIDP account funds swept to banks are not protected by Securities Investor Protection Corporation (SIPC). Excess funds swept to a money market fund are subject to SIPC protection. More information about D.A. Davidson's BIDP and applicable limits may be obtained at www.dadavidson.com/bidp. Questions about the BIDP or your balances and account activity in the BIDP should be directed to your Financial Professional.

Estimated annual income and current estimated yield - Estimated annual income (EAI) information presented in Holdings details, when available, reflects the estimated amount you would earn on a security if your current position and its related income remained constant for a year. Current Estimated Yield (EAY), when available, reflects the current estimated annual income divided by the current market value of the security as of the statement closing date. EAI and EAY contain certain types of securities that could include a return of principal capital gains, in which case the EAI and EAY would be overstated. In addition, bond calls, maturities, reclassification of dividends, capital gains and return of capital may overstate or understate EAI or EAY. EAI and EAY are estimates and the actual income and yield might be lower or higher than the estimated amounts. EAY reflects only the income generated by an investment and it does not reflect changes in the securities' price which may fluctuate. The information used to derive these estimates is obtained from third parties we consider reliable. Past performance is no guarantee of future results.

Research ratings - Ratings from Standard & Poor's and Moody's Financial Information Services may be displayed for certain securities listed on this statement. Ratings represent the opinions of the respective research providers, are subject to change, and should not be construed as representations or guarantees of performance. We obtained this information from third parties and therefore we cannot guarantee its accuracy. Please consult your Financial Professional for an interpretation of these ratings as they relate to your portfolio.

Security pricing - While sources used for pricing publicly traded securities are considered reliable, the prices displayed on our statement may be based on actual trades, bid/ask information or vendor evaluations. As such, the prices displayed on your statement may or may not reflect actual trade prices you would receive in the current market. Pricing for non-publicly traded securities is obtained from a variety of sources, which may include issuer-provided information. D.A. Davidson does not guarantee the accuracy, reliability, completeness or attainability of this information. Investment decisions should be made only after contacting your Financial Professional. Values on Fixed Income securities are based on estimates obtained from various sources. These values assume standard market conditions, are not firm bids or offers and may vary from prices achieved in actual transactions, especially for thinly traded securities. These values are generally for transactions of \$1 million or more, which often reflect more favorable pricing than transactions in smaller amounts. You may pay more than these values if you purchase smaller amounts of securities or receive less if you sell smaller amounts of securities. Securities pricing less than .001 will reflect a price per share of "0.00", but will display a total market value. Securities pricing at N/A indicate D.A. Davidson is unable to find a price for this security as of this statement date.

Revised 09/2021.

Summary of gains and losses - Gain and loss information is provided for information purposes only and should not be used for tax preparation. Gain or loss summary information may change due to basis adjustments. Information, if presented, includes only the securities for which we have original cost information. If you know the original cost of securities not purchased at D.A. Davidson, but included in your statement, please contact your Financial Professional.

Equity Dividend Reinvestment Program - By electing to reinvest equity dividend payments on eligible securities your shares will be purchased using the executed market price on payable date. For any fractional only position liquidations either the last market close price or the market open price on trade date will be used. This activity can be seen on your Account Statement.

Margin accounts - This is a combined statement of your Margin Account of a special memorandum account maintained for you under Section 4(F)(6) of Regulation T issued by the Board of Governors of the Federal Reserve System. The permanent record of the separate account as required by Regulation T is available for your inspection upon request. If you have sold securities which you do not own under the Short Sale rule, we have, in accordance with regulations, segregated the proceeds from such transactions into your Short Sale Account. Any market increases and/or decreases will be transferred to your Margin Account weekly. These entries will be identified as "Mark to the Market" postings in the "Activity Detail" section of your statement. The Daily closing price is used in determining any appreciation or depreciation of the securities sold short. The rate of interest charged to your Margin Account is determined by the cost of borrowing money and the amount of the debit balance. The rate will change without notice as the cost of borrowing money is increased or decreased. In computing interest, all Cash and Margin Accounts are netted, with the exception of the Short Account and Dividend & Interest credits that are pending disbursement, so that the charge is made on the net daily balance.

Davidson SmartCreditSM borrowing power - Borrowing power is estimated as fifty percent of marginable securities in your investment account. Please contact your Financial Professional for applicable interest rates and loan eligibility.

Option Clients - Information with respect to commissions and other charges related to the execution of listed option transactions has been included in the confirmations of such transactions previously furnished by D.A. Davidson & Co. A summary of this information will be promptly furnished upon your request.

Municipal Securities - Continuing disclosure information regarding municipal securities is available at the Municipal Securities Rule Making Board's EMMA website at www.emma.msrb.org.

Other information - If you have elected to receive interest on Free Credit Balances reflected as "cash" in your account, please be advised that under federal securities laws, the firm is permitted to pay such interest only on balances arising as an incidence of securities trading activities. Customer Free Credit Balances may be used in this firm's business subject to the limitations of 17 CFR Section 240.15c3.3 under the Securities Exchange Act of 1934. You have the right to demand and receive from us in the course of normal business operations the delivery of: a) Any Free Credit Balances to which you are entitled. b) Any Fully-Paid Securities to which you are entitled. c) Any securities purchased on margin upon full payment of any indebtedness to us. If you participate in one of our Money Market Funds or Bank Insured Deposit Program, collected money balances from the Securities Accounts are transferred daily to begin earning dividends or interest as soon as possible. You may also make direct deposits and write checks with these accounts. You have the right at any time to demand the liquidation of any Money Market Fund or Bank Insured Deposit Program and have the monies held as a free credit balance of cash within your account.

All securities held by D.A. Davidson & Co. for you, but which are not registered in your name, are commingled with identical securities being held for other clients. In the event any securities so held are "called" by the issuer, we will determine the beneficial ownership thereof by an impartial random selection system as required by Exchange rules.

Assets not held at D.A. Davidson & Co. may not be covered by the Securities Investor Protection Corporation (SIPC). They are reflected on this statement solely as a service to the customer.

A financial statement of this firm is available for your personal inspection at our office or a copy of it will be mailed upon your written request.

When disbursing funds to our clients, it is our policy to issue all payments on the bank of our choice, unless the client requests otherwise.

"Senior Vice President," "Vice President," and "Associate Vice President" are honorary titles given to certain Financial Professionals of D.A. Davidson & Co. in recognition of their experience in the securities industry and their commitment to customer service.



D | A | DAVIDSON

May 1 - May 31, 2025

SHERIDAN COUNTY MEMORIAL
HOSPITAL FOUNDATION
EDUCATIONAL ENDOWMENT
ATTN: ADA KIRVEN
PO BOX 391
SHERIDAN WY 82801

Advisory Information:
PARAGON
STEAMBOAT INVESTMENT
PARTNERS

Account Number: 71032980

Prestige Status: Prestige Elite

STEAMBOAT INVESTMENT PARTNERS
2 N MAIN ST, SUITE 102
SHERIDAN, WY 82801
(800) 406-7333

Value of your account

	Current Period (\$)	Current Year to date (\$)
Total beginning account value	961,001.17	934,215.61
Change in the value of your account	45,063.66	71,849.22
Closing account value as of 05/31/2025	1,006,064.83	1,006,064.83

Account values include all assets and outstanding margin and/or loan balances.
Please see important disclosures under the section titled "Bank Insured Deposit Program" in this statement.

Your investment objectives and risk tolerance

Investment objective	Growth & Income
Risk tolerance	Moderate

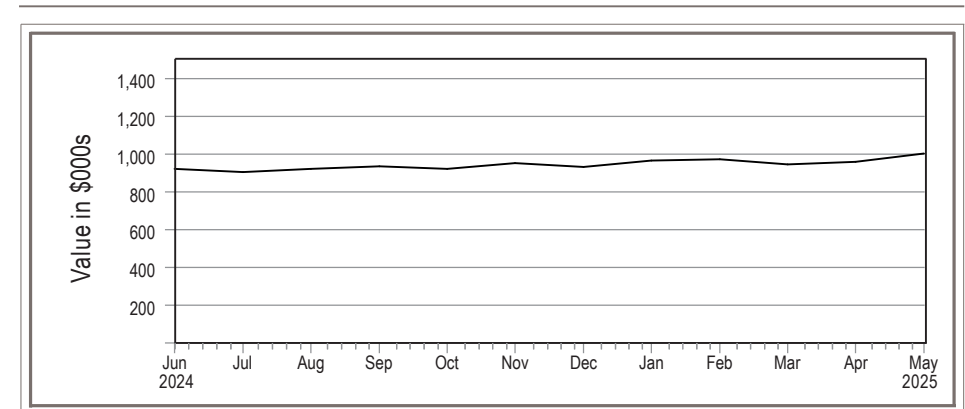
If the information in this section needs to be updated, contact your Financial Professional.

Davidson SmartCreditSM borrowing power and loan balance

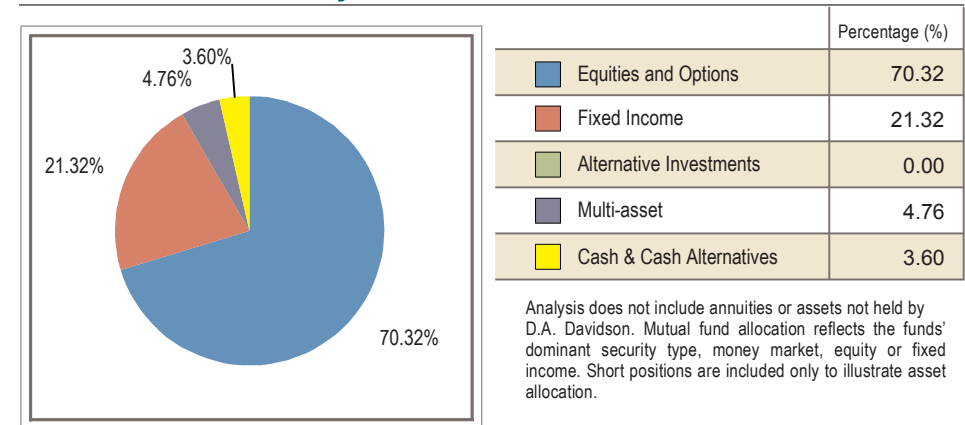
	Available Funds (\$)
Davidson SmartCredit SM	—
Loan balance	—

Contact your Financial Professional about the Davidson SmartCreditSM margin loan program. For more details, please see the Disclosure and Information page.

Value over time



Asset allocation analysis



Activity summary

	Current Period (\$)	Year to date (\$)
Deposits, security transfers received	—	15,000.00
Income received	1,351.45	8,193.81
Other funds credited	—	—
Sales	—	316,205.68
Checks and bill payments	—	—
Interest charges	—	—
Withdrawals, security transfers delivered	—	—
Foreign and/or federal tax withheld	(4.39)	(4.39)
Purchases	(118.48)	(338,684.42)
Expenses	—	(2,331.08)

For detailed information on activity occurring within this account see the Activity Details.

For detailed information about our brokerage and investment advisory services and the products we recommend, please visit www.dadavidson.com/disclosures where you will find our Form CRS - Client Relationship Summary, Regulation Best Interest Disclosures and various Product and Services Disclosures.

Income summary

	Current Period (\$)	Year to date (\$)
Taxable dividends	1,345.55	8,156.99
Non-taxable dividends	—	—
Taxable interest	5.90	36.82
Non-taxable interest	—	—
Capital gain income	—	—
Limited partnership distributions	—	—
Other taxable income	—	—
Other non-taxable income	—	—
Total Income	1,351.45	8,193.81
Taxable accrued income	—	—
Non-taxable accrued income	—	—

Taxable or non-taxable designation is determined at the security level, not at the account level. For detailed information on income received see the Activity Details.

Accrued income for purchases or sales is separately noted in the income summary and is included in the purchases and sales totals in the Activity summary. For details on the accrued income, please see the trade confirmation.

Holdings summary

	on April 30 (\$)	on May 31 (\$)
Cash and cash equivalents	3,176.58	4,405.16
Equities/options	378,427.63	412,493.56
Corporate bonds	—	—
Municipal bonds	—	—
Certificates of deposit	—	—
US Government bonds	—	—
Mutual funds	579,396.96	589,166.11
Non-Classified & annuities	—	—
Total assets	961,001.17	1,006,064.83

Cash & cash equivalent information

	Available Funds (\$)	Rate (%)
Cash Equivalent Funds/Money Market	—	—
Bank Insured Deposit Program	4,373.44	1.65
Cash	31.72	—
Total cash and cash equivalents	4,405.16	—

For details on this section see Disclosures.

DADVANTAGE

	Available Funds (\$)
Available for checkwriting and debit card transactions	—

Available balance may not accurately reflect recent deposits or withdrawals. Please see your Financial Professional for your most accurate available funds. For more details, please see the Disclosure and Additional Information section. Not all checkwriting programs are included in this section.

Gain/loss summary

	Realized gains and losses		Unrealized gains and losses
	on May 31 (\$)	Year to date (\$)	
Short term	—	39.89	33,180.87
Long term	—	(10,478.02)	158,961.98
Total	—	(10,438.13)	192,142.85

Holdings details

This section reflects the impact of positions purchased/sold on a trade date basis, and will include positions purchased and omit positions sold in the current month. Please see the Pending Trades section for more information. The "Market Value" and "Unrealized Gain/(Loss)" figures shown are representative values as of the last business day of the statement period indicated, which may not reflect the value that could actually be obtained in the market. For more details on pricing, cost basis, estimated annual income and current estimated yield see the disclosures section of the statement.

New Treasury regulations require that we report on Form 1099-B, after the close of the tax year, your adjusted cost basis and classify the gain or loss as either long-term or short-term on the sale of covered securities acquired on or after January 1, 2011. These regulations also require that we make basis adjustments due to wash sales, certain corporate actions and transfer by gift or inheritance, which will be reflected on your form 1099-B. Cost basis is reflected on monthly statements for informational purposes only and should not be used in the preparation of your income tax returns. Cost information is presented as a general guide to portfolio performance. Please refer to the disclosures section of this statement for additional information. An "M" in the purchase date indicates a position is made up of multiple trades/tax lots.

Quantity	Holding Description	Security Identifier Ratings	Purchase Date	Cost Basis (\$)	Total Cost Basis (\$)	Market Value (\$)	Total Market Value (\$)	Gain/Loss (\$)	Est. Annual Income (\$)	Current Yield (%)
	Equities / options									
16.0000	ACCENTURE PLC IRELAND CL A	ACN	M	245.377	3,926.04	316.820	5,069.12	1,143.08	94.72	1.87
26.0000	ADOBE INC	ADBE	M	436.805	11,356.92	415.090	10,792.34	(564.58)	—	—
105.0000	ADVANCED MICRO DEVICES INC	AMD	4/10/25	86.759	9,109.73	110.730	11,626.65	2,516.92	—	—
88.0000	ALPHABET INC CL C	GOOG	M	124.962	10,996.64	172.850	15,210.80	4,214.16	73.92	0.48
101.0000	AMAZON.COM INC	AMZN	M	134.827	13,617.49	205.010	20,706.01	7,088.52	—	—
97.0000	APPLE INC	AAPL	M	153.428	14,882.51	200.850	19,482.45	4,599.94	100.88	0.52
14.0000	ASML HOLDING NV NY REGISTRY SHS NEW 2012	ASML	4/10/25	639.013	8,946.18	736.770	10,314.78	1,368.60	94.19	0.91
31.0000	AUTOMATIC DATA PROCESSING INC	ADP	M	176.021	5,456.65	325.530	10,091.43	4,634.78	190.96	1.89
107.0000	BROADCOM INC	AVGO	M	65.842	7,045.08	242.070	25,901.49	18,856.41	252.52	0.97
32.0000	CHUBB LTD	CB	M	136.237	4,359.59	297.200	9,510.40	5,150.81	124.16	1.30
14.0000	COSTCO WHOLESALE CORP	COST	M	413.930	5,795.02	1,040.180	14,562.52	8,767.50	72.80	0.50
25.0000	CROWDSTRIKE HOLDINGS INC CL A	CRWD	M	300.130	7,503.24	471.370	11,784.25	4,281.01	—	—
16.0000	CUMMINS INC	CMI	M	241.799	3,868.78	321.480	5,143.68	1,274.90	116.48	2.26
51.0000	GENERAL DYNAMICS CORP	GD	4/10/25	266.499	13,591.44	278.490	14,202.99	611.55	306.00	2.15
63.0000	JOHNSON & JOHNSON	JNJ	M	145.842	9,188.05	155.210	9,778.23	590.18	327.60	3.35
41.0000	JPMORGAN CHASE & CO	JPM	M	126.535	5,187.95	264.000	10,824.00	5,636.05	229.60	2.12
15.0000	MCDONALDS CORP	MCD	M	287.495	4,312.42	313.850	4,707.75	395.33	106.20	2.25
48.0000	MICROSOFT CORP	MSFT	M	224.022	10,753.07	460.360	22,097.28	11,344.21	159.36	0.72

Holdings details (continued)

Quantity	Holding Description	Security Identifier Ratings	Purchase Date	Cost Basis (\$)	Total Cost Basis (\$)	Market Value (\$)	Total Market Value (\$)	Gain/Loss (\$)	Est. Annual Income (\$)	Current Yield (%)
	Equities / options (continued)									
10.0000	NETFLIX INC	NFLX	M	549.450	5,494.50	1,207.230	12,072.30	6,577.80	—	—
129.0000	NVIDIA CORP	NVDA	M	51.771	6,678.45	135.130	17,431.77	10,753.32	5.16	0.03
103.0000	ORACLE CORP	ORCL	4/10/25	131.123	13,505.73	165.530	17,049.59	3,543.86	206.00	1.21
158.0000	PALANTIR TECHNOLOGIES INC CL A	PLTR	4/10/25	85.870	13,567.43	131.780	20,821.24	7,253.81	—	—
170.0000	REALTY INCOME CORP	O	M	63.203	10,744.46	56.620	9,625.40	(1,119.06)	547.74	5.69
20.0000	S&P GLOBAL INC	SPGI	M	350.324	7,006.48	512.860	10,257.20	3,250.72	76.80	0.75
18.0000	SERVICENOW INC	NOW	M	746.504	13,437.07	1,011.090	18,199.62	4,762.55	—	—
52.0000	STARBUCKS CORP	SBUX	M	82.178	4,273.25	83.950	4,365.40	92.15	126.88	2.91
27.0000	STRYKER CORP	SYK	M	173.846	4,693.85	382.640	10,331.28	5,637.43	90.72	0.88
91.0000	TAIWAN SEMICONDUCTOR MANUFACTURING CO LTD SPON ADR	TSM	4/10/25	148.968	13,556.09	193.320	17,592.12	4,036.03	260.29	1.48
130.0000	UBER TECHNOLOGIES INC	UBER	M	61.853	8,040.87	84.160	10,940.80	2,899.93	—	—
127.0000	VALERO ENERGY CORP	VLO	M	86.167	10,943.23	128.970	16,379.19	5,435.96	574.04	3.50
28.0000	VISA INC CL A	V	M	217.915	6,101.61	365.190	10,225.32	4,123.71	66.08	0.65
32.0000	ZOETIS INC CL A	ZTS	M	144.229	4,615.32	168.630	5,396.16	780.84	64.00	1.19
	Subtotal - Equities / options				272,555.14		412,493.56	139,938.42	4,267.10	

Holdings details (continued)

Quantity	Holding Description	Security Identifier Ratings	Purchase Date	Cost Basis (\$)	Total Cost Basis (\$)	Market Value (\$)	Total Market Value (\$)	Gain/Loss (\$)	Gain/Loss (\$) Client Investment	Est. Annual Income (\$)	Current Yield (%)
	Mutual Funds										
	ABRDN BLOOMBERG ALL COMMODITY STRATEGY K-1 FREE ETF	BCI									
1,579.0000	Client investment		M	21.959	34,672.81	20.300	32,053.70	(2,619.11)	(2,619.11)	1,027.45	3.20
	CAPITAL GROUP FIXED CORE PLUS INCOME ETF	CGCP									
2,058.0000	Client investment		4/10/25	21.958	45,190.48	22.190	45,667.02	476.54	476.54	2,328.83	5.10
	CAPITAL GROUP FIXED INCOME U S MULTI SECTOR INCOME ETF	CGMS									
856.0000	Client investment		12/26/24	27.186	23,271.52	27.230	23,308.88	37.36	37.36	1,328.34	5.70
	CAPITAL GROUP CORE BOND ETF	CGCB									
2,794.0000	Client investment		M	25.800	72,086.51	26.000	72,644.00	557.49	557.49	3,086.25	4.25
	ISHARES CORE U S AGGREGATE BOND ETF	AGG									
743.0000	Client investment		4/10/25	97.308	72,300.14	98.100	72,888.30	588.16	588.16	2,695.82	3.70
	ISHARES CORE MSCI EMERGING MARKETS ETF	IEMG									
273.0000	Client investment		M	44.956	12,272.89	56.690	15,476.37	3,203.48	3,203.48	456.45	2.95
	PACER TRENDPILOT U S LARGE CAP ETF	PTLC									
559.0000	Client investment		M	54.806	30,636.63	48.300	26,999.70	(3,636.93)	(3,636.93)	198.89	0.74
	VANGUARD S&P MID CAP 400 INDEX ETF	IVOO									
151.0000	Client investment		M	66.799	10,086.68	101.610	15,343.11	5,256.43	5,256.43	224.53	1.46
	VANGUARD FTSE ALL WORLD EX US ETF	VEU									
481.0000	Client investment		M	45.227	21,754.42	65.230	31,375.63	9,621.21	9,621.21	883.59	2.82

Holdings details (continued)

Quantity	Holding Description	Security Identifier Ratings	Purchase Date	Cost Basis (\$)	Total Cost Basis (\$)	Market Value (\$)	Total Market Value (\$)	Gain/Loss (\$)	Gain/Loss (\$) Client Investment	Est. Annual Income (\$)	Current Yield (%)
	Mutual Funds (continued)										
	VANGUARD RUSSELL 2000 INDEX FD ETF SHARES	VTWO									
312.0000	Client investment		M	64.369	20,083.31	82.990	25,892.88	5,809.57	5,809.57	360.36	1.39
	VANGUARD S&P 500 INDEX ETF	VOO									
76.0000	Client investment		M	420.098	31,927.45	541.760	41,173.76	9,246.31	9,246.31	529.94	1.29
	VANGUARD REAL ESTATE INDEX ETF	VNQ									
555.0000	Client investment		M	86.657	48,094.89	89.320	49,572.60	1,477.71	1,477.71	2,016.31	4.07
	CAPITAL INCOME BUILDER CL F2	CAIFX									
199.7710	Client investment		M	60.682	12,122.49	74.570	14,896.93	2,774.44	2,774.44	—	—
63.3670	Total reinvested		M	64.487	4,086.34	74.570	4,725.27	638.95	4,725.27		
263.1380	Total quantity				16,208.83		19,622.20	3,413.39	7,499.71	664.29	3.38
	INTERNATIONAL GROWTH & INCOME CL F2	IGFFX									
401.0750	Client investment		M	32.209	12,918.24	41.820	16,772.95	3,854.73	3,854.71	—	—
102.4620	Total reinvested		M	35.244	3,611.22	41.820	4,284.96	673.76	4,284.96		
503.5370	Total quantity				16,529.46		21,057.91	4,528.49	8,139.67	527.75	2.51
	JPMORGAN MID CAP GROWTH CL I	HLGEX									
189.6680	Client investment		M	37.462	7,105.27	50.580	9,593.40	2,488.14	2,488.13	—	—
14.3060	Total reinvested		M	51.321	734.20	50.580	723.60	(10.60)	723.60		
203.9740	Total quantity				7,839.47		10,317.00	2,477.54	3,211.73	—	—
	MFS INTL GROWTH CL I	MQGIX									
400.6380	Client investment		M	38.435	15,398.45	53.160	21,297.92	5,899.47	5,899.47	—	—
83.9610	Total reinvested		M	46.319	3,888.99	53.160	4,463.36	574.40	4,463.36		
484.5990	Total quantity				19,287.44		25,761.28	6,473.87	10,362.83	317.84	1.23

Holdings details (continued)

Quantity	Holding Description	Security Identifier Ratings	Purchase Date	Cost Basis (\$)	Total Cost Basis (\$)	Market Value (\$)	Total Market Value (\$)	Gain/Loss (\$)	Gain/Loss (\$) Client Investment	Est. Annual Income (\$)	Current Yield (%)
	Mutual Funds (continued)										
	T ROWE PRICE CAP APPREC INSTL CL	TRAIX									
710.1650	Client investment		M	28.537	20,266.13	35.670	25,331.58	5,065.44	5,065.45	—	—
81.7700	Total reinvested		M	32.888	2,689.26	35.670	2,916.74	227.48	2,916.74		
791.9350	Total quantity				22,955.39		28,248.32	5,292.92	7,982.19	667.83	2.36
	VANGUARD FEDERAL MONEY MARKET INVESTOR CL	VMFXX									
24,123.0000	Client investment		M	1.000	24,123.00	1.000	24,123.00	—	—	—	—
7,640.4500	Total reinvested		M	1.000	7,640.45	1.000	7,640.45	—	7,640.45		
31,763.4500	Total quantity				31,763.45		31,763.45	—	7,640.45	1,324.53	4.17
	Subtotal - Mutual Funds				536,961.77		589,166.11	52,204.43	74,854.80	18,639.00	

Included in "Client Investment" are initial purchases and shares not obtained at D.A. Davidson or shares received as a transfer. "Total reinvested" is the total of all dividends and capital gains reinvested. Gain/Loss Client Investment represents a full gain or loss on the total reinvested shares.

	Total Cost Basis (\$)	Total Market Value (\$)	Gain/Loss (\$)	Estimated Annual Income (\$)
Total security value				
	809,516.91	1,001,659.67	192,142.85	22,906.10

Activity details

Date	Activity	Quantity	Price (\$)	Description	Total (\$)	Cash (\$)	Margin (\$)	Money Market (\$)	Bank Insured Deposit (\$)
	Opening Balance				3,176.58	87.36	—	—	3,089.22
5/1/25	DIVIDEND		0.0000	CAPITAL GROUP FIXED CORE PLUS INCOME ETF 050125 2,058 (14020Y102)	218.06	218.06	—	—	—
5/1/25	DIVIDEND		0.0000	CAPITAL GROUP CORE BOND ETF 050125 2,794 (14020Y508)	271.62	271.62	—	—	—

Activity details (continued)

Date	Activity	Quantity	Price (\$)	Description	Total (\$)	Cash (\$)	Margin (\$)	Money Market (\$)	Bank Insured Deposit (\$)
5/1/25	DIVIDEND		0.0000	CAPITAL GROUP FIXED INCOME U S MULTI SECTOR INCOME ETF 050125 856 (14020Y300)	123.71	123.71	—	—	—
5/1/25	DIVIDEND		0.0000	VANGUARD FEDERAL MONEY MARKET INVESTOR CL 043025 31,644.97000 (922906300)	118.48	118.48	—	—	—
5/1/25	REINVEST DIV	118.48	0.0000	VANGUARD FEDERAL MONEY MARKET INVESTOR CL REINVEST AT 1.000 (922906300)	(118.48)	(118.48)	—	—	—
5/1/25	DIVIDEND		0.0000	VIRTUS NEWFLEET MULTI SECTOR SHORT TERM BOND CL I 043025 21,066.53500 (92828R610)	129.21	129.21	—	—	—
5/1/25	Cash Sweep Out		1.0000	BANK INSD DEPOSIT ACCT FDIC INSURED	—	(87.36)	—	—	—
5/1/25	BIDP Sweep In		1.0000	BANK INSD DEPOSIT ACCT FDIC INSURED	—	—	—	—	87.36
5/2/25	Cash Sweep Out		1.0000	BANK INSD DEPOSIT ACCT FDIC INSURED	—	(742.60)	—	—	—
5/2/25	BIDP Sweep In		1.0000	BANK INSD DEPOSIT ACCT FDIC INSURED	—	—	—	—	742.60
5/5/25	INTEREST		0.0000	BANK INSD DEPOSIT ACCT FDIC INSURED 050525 3,919	0.67	—	—	—	0.67
5/6/25	DIVIDEND		0.0000	ASML HOLDING NV NY REGISTRY SHS NEW 2012 050625 14 (N07059210)	29.27	29.27	—	—	—
5/6/25	DIVIDEND		0.0000	ISHARES CORE U S AGGREGATE BOND ETF 050625 743 (464287226)	238.67	238.67	—	—	—
5/6/25	WITHHOLDING		0.0000	FRGN-W/H @ SOURCE ASML HLDG NV NYRS NEW (N07059210)	(4.39)	(4.39)	—	—	—
5/7/25	Cash Sweep Out		1.0000	BANK INSD DEPOSIT ACCT FDIC INSURED	—	(263.55)	—	—	—

Activity details (continued)

Date	Activity	Quantity	Price (\$)	Description	Total (\$)	Cash (\$)	Margin (\$)	Money Market (\$)	Bank Insured Deposit (\$)
5/7/25	BIDP Sweep In		1.0000	BANK INSD DEPOSIT ACCT FDIC INSURED	—	—	—	—	263.55
5/9/25	DIVIDEND		0.0000	GENERAL DYNAMICS CORP 050925 51 (369550108)	76.50	76.50	—	—	—
5/12/25	Cash Sweep Out		1.0000	BANK INSD DEPOSIT ACCT FDIC INSURED	—	(76.50)	—	—	—
5/12/25	BIDP Sweep In		1.0000	BANK INSD DEPOSIT ACCT FDIC INSURED	—	—	—	—	76.50
5/15/25	DIVIDEND		0.0000	ACCENTURE PLC IRELAND CL A 051525 13 (G1151C101)	19.24	19.24	—	—	—
5/15/25	DIVIDEND		0.0000	APPLE INC 051525 97 (037833100)	25.22	25.22	—	—	—
5/15/25	DIVIDEND		0.0000	REALTY INCOME CORP 051525 170 (756109104)	45.65	45.65	—	—	—
5/16/25	DIVIDEND		0.0000	COSTCO WHOLESALE CORP 051625 14 (22160K105)	18.20	18.20	—	—	—
5/16/25	Cash Sweep Out		1.0000	BANK INSD DEPOSIT ACCT FDIC INSURED	—	(90.11)	—	—	—
5/16/25	BIDP Sweep In		1.0000	BANK INSD DEPOSIT ACCT FDIC INSURED	—	—	—	—	90.11
5/19/25	Cash Sweep Out		1.0000	BANK INSD DEPOSIT ACCT FDIC INSURED	—	(18.20)	—	—	—
5/19/25	BIDP Sweep In		1.0000	BANK INSD DEPOSIT ACCT FDIC INSURED	—	—	—	—	18.20
5/30/25	DIVIDEND		0.0000	STARBUCKS CORP 053025 52 (855244109)	31.72	31.72	—	—	—
5/30/25	INTEREST		0.0000	BANK INSD DEPOSIT ACCT FDIC INSURED 053025 4,373	5.23	—	—	—	5.23
				Totals	4,405.16	31.72	—	—	4,373.44

Bank Insured Deposit Program

Program Balances	Current Value (\$)	Program Balances	Current Value (\$)
US Bank National Association	4,373.44		
Total BIDP Deposits			4,373.44

As of the end of the period covered by this statement you had funds in the amounts and at the bank(s)/money market fund shown above relating to the Bank Insured Deposit Program (BIDP). For other information relating to the BIDP, see the Cash and Cash Equivalent information on page two of this statement for the interest rate earned during the period and the activity details section of this statement for the total interest earned and credited during the period. Funds held in the banks shown above are obligations of those banks and not of D.A. Davidson & Co. Funds held at a money market fund are obligations of the Fund Company and not of D.A. Davidson & Co. Funds held at banks in the BIDP are eligible for insurance to applicable limits by the Federal Deposit Insurance Corporation (FDIC), provided that any additional funds above such deposit limits will be deposited in an account at a designated money market fund. BIDP account funds swept to banks are not protected by Securities Investor Protection Corporation (SIPC). Excess funds swept to a money market fund are subject to SIPC protection. More information about D.A. Davidson's BIDP and applicable limits may be obtained at www.dadavidson.com/bidp. Questions about the BIDP or your balances and account activity in the BIDP should be directed to your Financial Professional.

Below is a full list of banks in the Bank Insured Deposit Program (BIDP) including banks leaving or joining the program. To see which banks are available to your account and the order in which funds are placed in the banks, you will find the most current list at this link: (dadavidson.com/Portals/0/bus-wm/bank%20list/priority_bank_list.pdf)

Bank of Baroda	Bank of East Asia Ltd	Bank of India	Bank of New York Mellon
C3bank NA	Cadence Bank	East West Bank	First Internet Bank of Indiana
Glacier Bank	Goldman Sachs Bank USA	HSBC Bank USA NA	Merrick Bank
Morgan Stanley Bank NA	Morgan Stanley Private Bank	SMBC Manubank	State Bank of India
Synovus Bank	Toyota Financial Savings Bank	TriState Capital Bank	Truist Bank
Umpqua Bank	US Bank NA	Valley National Bank	WEX Bank

Trusted Contact

Name	Phone
NOT PROVIDED	Please Provide

If no Trusted Contact information is listed, or the information on file has changed, please contact your Financial Professional.
By providing information about trusted contact person(s), you authorize us to contact the trusted contact person(s) and disclose information about your account to those person(s) in the following circumstances: To address possible financial exploitation, to confirm the specifics of your current contact information, health status, or the identity of any legal guardian, executor, trustee or holder of a power of attorney, or as otherwise permitted by FINRA Rule 2165 (Financial Exploitation of Specified Adults). This designation does not provide trading authority or the ability to act as attorney-in-fact. Please note, your trusted contact must be 18 years or older, cannot be an owner, trustee or attorney-in-fact on the account, or your Financial Professional.

*** END OF STATEMENT ***



D | A | DAVIDSON

Current period ending May 31, 2025

Account Name: SHERIDAN COUNTY MEMORIAL
HOSPITAL FOUNDATION
LORRAINE S HUSMAN TRUST
ATTN: ADA KIRVEN

Your Financial Professional:
STEAMBOAT INVESTMENT PARTNERS
2 N MAIN ST, SUITE 102
SHERIDAN, WY 82801

If you have more than one account with us, why not link them and receive summary information for your entire household? Contact your Financial Professional for more details.

SHERIDAN COUNTY MEMORIAL
HOSPITAL FOUNDATION
LORRAINE S HUSMAN TRUST
ATTN: ADA KIRVEN
PO BOX 391
SHERIDAN WY 82801

Recognizing World Elder Abuse Awareness Day

June 15 is World Elder Abuse Awareness Day (WEAAD) when we reflect on the many challenges Seniors face, including financial safety. WEAAD is also an opportunity to review the steps you've taken to protect yourself and/or the seniors in your life from fraud, scams, and other abuses. We can help you name a Trusted Contact, provide educational resources, and confirm your accounts are established according to your wishes. Speak with your financial professional today to take these important steps towards a secure future.

Important information – please read

Your protection is our priority. Financial fraud is an ever-increasing risk in today's world. Financial services firms, including D.A. Davidson, have processes in place to help prevent fraudulent activities in areas such as wires, debit card transactions, and checks. Please be sure to carefully review your monthly statements and any other documents promptly, to detect any unauthorized or irregular activity.

Investment and insurance products are not FDIC insured, are not bank guaranteed and may lose value.



D | A | DAVIDSON

Corporate Office, D.A. Davidson & Co. member SIPC
Davidson Building · Great Falls, Montana 59401

(406) 727-4200 · Fax (406) 791-7315 · (800) 332-5915

www.dadavidson.com

About your statement - Statements are mailed monthly to clients who have transactions during the month that affect money balances and/or security positions. Statements are mailed quarterly to all other clients provided that the account contains a money or security balance. All positions, balances and activity are trade date based on this statement. Please review these statements carefully, and keep them for your records. If you note any discrepancies in your money balance, security positions, or activity in your account, please promptly report this to your Financial Professional or the Branch Office Manager for the branch where you maintain your account. To further protect your rights, including any rights under the Securities Investor Protection Act ("SIPA"), any verbal communications about inaccuracies or discrepancies in your account should be re-confirmed in writing. Your statement will be deemed correct unless we receive notice from you within 10 days of receipt. An explanation of your statement can be found on the D.A. Davidson website or upon request from your Financial Professional. If you have questions that are not adequately answered by these explanations, your Financial Professional will be happy to answer them for you.

Dadvantage available balance - Contact your Financial Professional for specific information regarding the Dadvantage program and eligibility.

Bank Insured Deposit Program (BIDP) - Funds held in banks are obligations of those banks and not of D.A. Davidson & Co. Funds held at the money market fund are obligations of the Fund Company and not of D.A. Davidson & Co. Funds held at banks in the BIDP are eligible for insurance to applicable limits by the Federal Deposit Insurance Corporation (FDIC) provided that any additional funds above such deposit limits will be deposited in an account at a designated money market fund. BIDP account funds swept to banks are not protected by Securities Investor Protection Corporation (SIPC). Excess funds swept to a money market fund are subject to SIPC protection. More information about D.A. Davidson's BIDP and applicable limits may be obtained at www.dadavidson.com/bidp. Questions about the BIDP or your balances and account activity in the BIDP should be directed to your Financial Professional.

Estimated annual income and current estimated yield - Estimated annual income (EAI) information presented in Holdings details, when available, reflects the estimated amount you would earn on a security if your current position and its related income remained constant for a year. Current Estimated Yield (EAY), when available, reflects the current estimated annual income divided by the current market value of the security as of the statement closing date. EAI and EAY contain certain types of securities that could include a return of principal capital gains, in which case the EAI and EAY would be overstated. In addition, bond calls, maturities, reclassification of dividends, capital gains and return of capital may overstate or understate EAI or EAY. EAI and EAY are estimates and the actual income and yield might be lower or higher than the estimated amounts. EAY reflects only the income generated by an investment and it does not reflect changes in the securities' price which may fluctuate. The information used to derive these estimates is obtained from third parties we consider reliable. Past performance is no guarantee of future results.

Research ratings - Ratings from Standard & Poor's and Moody's Financial Information Services may be displayed for certain securities listed on this statement. Ratings represent the opinions of the respective research providers, are subject to change, and should not be construed as representations or guarantees of performance. We obtained this information from third parties and therefore we cannot guarantee its accuracy. Please consult your Financial Professional for an interpretation of these ratings as they relate to your portfolio.

Security pricing - While sources used for pricing publicly traded securities are considered reliable, the prices displayed on our statement may be based on actual trades, bid/ask information or vendor evaluations. As such, the prices displayed on your statement may or may not reflect actual trade prices you would receive in the current market. Pricing for non-publicly traded securities is obtained from a variety of sources, which may include issuer-provided information. D.A. Davidson does not guarantee the accuracy, reliability, completeness or attainability of this information. Investment decisions should be made only after contacting your Financial Professional. Values on Fixed Income securities are based on estimates obtained from various sources. These values assume standard market conditions, are not firm bids or offers and may vary from prices achieved in actual transactions, especially for thinly traded securities. These values are generally for transactions of \$1 million or more, which often reflect more favorable pricing than transactions in smaller amounts. You may pay more than these values if you purchase smaller amounts of securities or receive less if you sell smaller amounts of securities. Securities pricing less than .001 will reflect a price per share of "0.00", but will display a total market value. Securities pricing at N/A indicate D.A. Davidson is unable to find a price for this security as of this statement date.

Revised 09/2021.

Summary of gains and losses - Gain and loss information is provided for information purposes only and should not be used for tax preparation. Gain or loss summary information may change due to basis adjustments. Information, if presented, includes only the securities for which we have original cost information. If you know the original cost of securities not purchased at D.A. Davidson, but included in your statement, please contact your Financial Professional.

Equity Dividend Reinvestment Program - By electing to reinvest equity dividend payments on eligible securities your shares will be purchased using the executed market price on payable date. For any fractional only position liquidations either the last market close price or the market open price on trade date will be used. This activity can be seen on your Account Statement.

Margin accounts - This is a combined statement of your Margin Account of a special memorandum account maintained for you under Section 4(F)(6) of Regulation T issued by the Board of Governors of the Federal Reserve System. The permanent record of the separate account as required by Regulation T is available for your inspection upon request. If you have sold securities which you do not own under the Short Sale rule, we have, in accordance with regulations, segregated the proceeds from such transactions into your Short Sale Account. Any market increases and/or decreases will be transferred to your Margin Account weekly. These entries will be identified as "Mark to the Market" postings in the "Activity Detail" section of your statement. The Daily closing price is used in determining any appreciation or depreciation of the securities sold short. The rate of interest charged to your Margin Account is determined by the cost of borrowing money and the amount of the debit balance. The rate will change without notice as the cost of borrowing money is increased or decreased. In computing interest, all Cash and Margin Accounts are netted, with the exception of the Short Account and Dividend & Interest credits that are pending disbursement, so that the charge is made on the net daily balance.

Davidson SmartCreditSM borrowing power - Borrowing power is estimated as fifty percent of marginable securities in your investment account. Please contact your Financial Professional for applicable interest rates and loan eligibility.

Option Clients - Information with respect to commissions and other charges related to the execution of listed option transactions has been included in the confirmations of such transactions previously furnished by D.A. Davidson & Co. A summary of this information will be promptly furnished upon your request.

Municipal Securities - Continuing disclosure information regarding municipal securities is available at the Municipal Securities Rule Making Board's EMMA website at www.emma.msrb.org.

Other information - If you have elected to receive interest on Free Credit Balances reflected as "cash" in your account, please be advised that under federal securities laws, the firm is permitted to pay such interest only on balances arising as an incidence of securities trading activities. Customer Free Credit Balances may be used in this firm's business subject to the limitations of 17 CFR Section 240.15c3.3 under the Securities Exchange Act of 1934. You have the right to demand and receive from us in the course of normal business operations the delivery of: a) Any Free Credit Balances to which you are entitled. b) Any Fully-Paid Securities to which you are entitled. c) Any securities purchased on margin upon full payment of any indebtedness to us. If you participate in one of our Money Market Funds or Bank Insured Deposit Program, collected money balances from the Securities Accounts are transferred daily to begin earning dividends or interest as soon as possible. You may also make direct deposits and write checks with these accounts. You have the right at any time to demand the liquidation of any Money Market Fund or Bank Insured Deposit Program and have the monies held as a free credit balance of cash within your account.

All securities held by D.A. Davidson & Co. for you, but which are not registered in your name, are commingled with identical securities being held for other clients. In the event any securities so held are "called" by the issuer, we will determine the beneficial ownership thereof by an impartial random selection system as required by Exchange rules.

Assets not held at D.A. Davidson & Co. may not be covered by the Securities Investor Protection Corporation (SIPC). They are reflected on this statement solely as a service to the customer.

A financial statement of this firm is available for your personal inspection at our office or a copy of it will be mailed upon your written request.

When disbursing funds to our clients, it is our policy to issue all payments on the bank of our choice, unless the client requests otherwise.

"Senior Vice President," "Vice President," and "Associate Vice President" are honorary titles given to certain Financial Professionals of D.A. Davidson & Co. in recognition of their experience in the securities industry and their commitment to customer service.



D | A | DAVIDSON

May 1 - May 31, 2025

SHERIDAN COUNTY MEMORIAL
HOSPITAL FOUNDATION
LORRAINE S HUSMAN TRUST
ATTN: ADA KIRVEN
PO BOX 391
SHERIDAN WY 82801

Advisory Information:
PARAGON
STEAMBOAT INVESTMENT
PARTNERS

Account Number: 83750357

Prestige Status: Prestige Elite

STEAMBOAT INVESTMENT PARTNERS
2 N MAIN ST, SUITE 102
SHERIDAN, WY 82801
(800) 406-7333

Value of your account

	Current Period (\$)	Current Year to date (\$)
Total beginning account value	6,242,308.34	6,271,183.22
Change in the value of your account	387,382.61	358,507.73
Closing account value as of 05/31/2025	6,629,690.95	6,629,690.95

Account values include all assets and outstanding margin and/or loan balances.
Please see important disclosures under the section titled "Bank Insured Deposit Program" in this statement.

Your investment objectives and risk tolerance

Investment objective	Growth & Income
Risk tolerance	Moderate

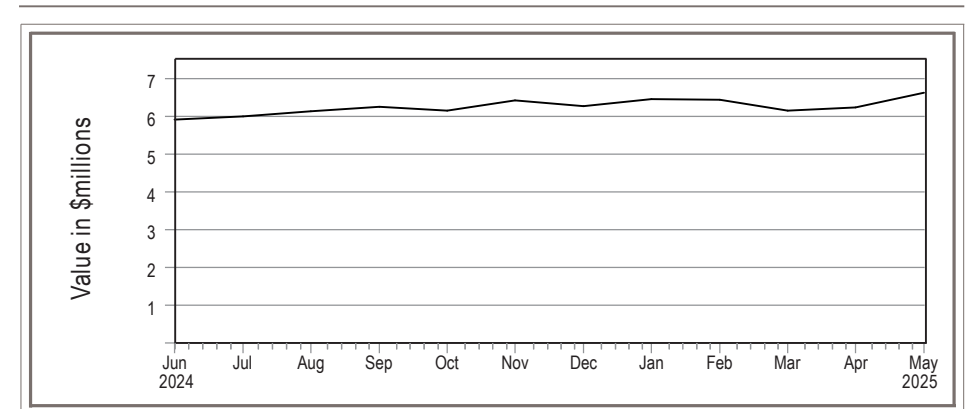
If the information in this section needs to be updated, contact your Financial Professional.

Davidson SmartCreditSM borrowing power and loan balance

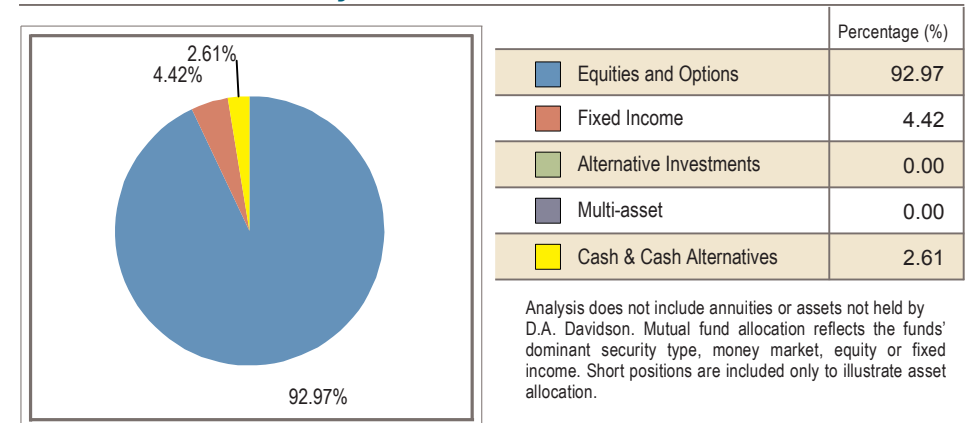
	Available Funds (\$)
Davidson SmartCredit SM	—
Loan balance	—

Contact your Financial Professional about the Davidson SmartCreditSM margin loan program. For more details, please see the Disclosure and Information page.

Value over time



Asset allocation analysis



Activity summary

	Current Period (\$)	Year to date (\$)
Deposits, security transfers received	—	—
Income received	4,830.77	34,870.18
Other funds credited	—	—
Sales	—	1,160,855.89
Checks and bill payments	—	—
Interest charges	—	—
Withdrawals, security transfers delivered	—	—
Foreign and/or federal tax withheld	(28.54)	(28.54)
Purchases	(570.14)	(1,195,834.84)
Expenses	—	(15,420.79)

For detailed information on activity occurring within this account see the Activity Details.

For detailed information about our brokerage and investment advisory services and the products we recommend, please visit www.dadavidson.com/disclosures where you will find our Form CRS - Client Relationship Summary, Regulation Best Interest Disclosures and various Product and Services Disclosures.

Income summary

	Current Period (\$)	Year to date (\$)
Taxable dividends	4,794.78	34,621.33
Non-taxable dividends	—	—
Taxable interest	35.99	248.85
Non-taxable interest	—	—
Capital gain income	—	—
Limited partnership distributions	—	—
Other taxable income	—	—
Other non-taxable income	—	—
Total Income	4,830.77	34,870.18
Taxable accrued income	—	—
Non-taxable accrued income	—	—

Taxable or non-taxable designation is determined at the security level, not at the account level. For detailed information on income received see the Activity Details.

Accrued income for purchases or sales is separately noted in the income summary and is included in the purchases and sales totals in the Activity summary. For details on the accrued income, please see the trade confirmation.

Holdings summary

	on April 30 (\$)	on May 31 (\$)
Cash and cash equivalents	22,874.35	27,106.44
Equities/options	3,043,164.57	3,300,319.37
Corporate bonds	—	—
Municipal bonds	—	—
Certificates of deposit	—	—
US Government bonds	—	—
Mutual funds	3,176,269.42	3,302,265.14
Non-Classified & annuities	—	—
Total assets	6,242,308.34	6,629,690.95

Cash & cash equivalent information

	Available Funds (\$)	Rate (%)
Cash Equivalent Funds/Money Market	—	—
Bank Insured Deposit Program	26,677.00	1.65
Cash	429.44	—
Total cash and cash equivalents	27,106.44	—

For details on this section see Disclosures.

DADVANTAGE

	Available Funds (\$)
Available for checkwriting and debit card transactions	—

Available balance may not accurately reflect recent deposits or withdrawals. Please see your Financial Professional for your most accurate available funds. For more details, please see the Disclosure and Additional Information section. Not all checkwriting programs are included in this section.

Gain/loss summary

	Realized gains and losses		Unrealized gains and losses
	on May 31 (\$)	Year to date (\$)	
Short term	—	409.59	211,636.68
Long term	—	(750.91)	1,470,727.82
Total	—	(341.32)	1,682,364.50

Holdings details

This section reflects the impact of positions purchased/sold on a trade date basis, and will include positions purchased and omit positions sold in the current month. Please see the Pending Trades section for more information. The "Market Value" and "Unrealized Gain/(Loss)" figures shown are representative values as of the last business day of the statement period indicated, which may not reflect the value that could actually be obtained in the market. For more details on pricing, cost basis, estimated annual income and current estimated yield see the disclosures section of the statement.

New Treasury regulations require that we report on Form 1099-B, after the close of the tax year, your adjusted cost basis and classify the gain or loss as either long-term or short-term on the sale of covered securities acquired on or after January 1, 2011. These regulations also require that we make basis adjustments due to wash sales, certain corporate actions and transfer by gift or inheritance, which will be reflected on your form 1099-B. Cost basis is reflected on monthly statements for informational purposes only and should not be used in the preparation of your income tax returns. Cost information is presented as a general guide to portfolio performance. Please refer to the disclosures section of this statement for additional information. An "M" in the purchase date indicates a position is made up of multiple trades/tax lots.

Quantity	Holding Description	Security Identifier Ratings	Purchase Date	Cost Basis (\$)	Total Cost Basis (\$)	Market Value (\$)	Total Market Value (\$)	Gain/Loss (\$)	Est. Annual Income (\$)	Current Yield (%)
	Equities / options									
206.0000	ACCENTURE PLC IRELAND CL A	ACN	M	244.929	50,455.49	316.820	65,264.92	14,809.43	1,219.52	1.87
167.0000	ADOBE INC	ADBE	M	437.534	73,068.24	415.090	69,320.03	(3,748.21)	—	—
671.0000	ADVANCED MICRO DEVICES INC	AMD	4/10/25	86.759	58,215.49	110.730	74,299.83	16,084.34	—	—
752.0000	ALPHABET INC CL C	GOOG	M	93.439	70,266.29	172.850	129,983.20	59,716.91	631.68	0.48
814.0000	AMAZON.COM INC	AMZN	M	137.901	112,251.72	205.010	166,878.14	54,626.42	—	—
936.0000	APPLE INC	AAPL	M	141.167	132,132.78	200.850	187,995.60	55,862.82	973.44	0.52
91.0000	ASML HOLDING NV NY REGISTRY SHS NEW 2012	ASML	4/10/25	639.013	58,150.16	736.770	67,046.07	8,895.91	612.28	0.91
201.0000	AUTOMATIC DATA PROCESSING INC	ADP	M	167.404	33,648.13	325.530	65,431.53	31,783.40	1,238.16	1.89
684.0000	BROADCOM INC	AVGO	M	67.419	46,114.47	242.070	165,575.88	119,461.41	1,614.24	0.97
207.0000	CHUBB LTD	CB	M	144.887	29,991.73	297.200	61,520.40	31,528.67	803.16	1.30
121.0000	COSTCO WHOLESALE CORP	COST	M	377.921	45,728.40	1,040.180	125,861.78	80,133.38	629.20	0.50
161.0000	CROWDSTRIKE HOLDINGS INC CL A	CRWD	M	297.851	47,954.09	471.370	75,890.57	27,936.48	—	—
210.0000	CUMMINS INC	CMI	M	239.510	50,297.17	321.480	67,510.80	17,213.63	1,528.80	2.26
134.0000	DEERE & CO	DE	M	329.995	44,219.34	506.260	67,838.84	23,619.50	868.32	1.28
435.0000	GENERAL DYNAMICS CORP	GD	4/10/25	266.499	115,926.96	278.490	121,143.15	5,216.19	2,610.00	2.15
397.0000	JOHNSON & JOHNSON	JNJ	M	147.762	58,661.57	155.210	61,618.37	2,956.80	2,064.40	3.35
260.0000	JPMORGAN CHASE & CO	JPM	M	111.845	29,079.67	264.000	68,640.00	39,560.33	1,456.00	2.12
270.0000	LOWES COMPANIES INC	LOW	M	127.980	34,554.70	225.730	60,947.10	26,392.40	1,296.00	2.13

Holdings details (continued)

Quantity	Holding Description	Security Identifier Ratings	Purchase Date	Cost Basis (\$)	Total Cost Basis (\$)	Market Value (\$)	Total Market Value (\$)	Gain/Loss (\$)	Est. Annual Income (\$)	Current Yield (%)
	Equities / options (continued)									
291.0000	MCDONALDS CORP	MCD	M	292.166	85,020.22	313.850	91,330.35	6,310.13	2,060.28	2.25
466.0000	MICROSOFT CORP	MSFT	M	234.374	109,218.50	460.360	214,527.76	105,309.26	1,547.12	0.72
64.0000	NETFLIX INC	NFLX	4/28/22	193.901	12,409.69	1,207.230	77,262.72	64,853.03	—	—
1,101.0000	NVIDIA CORP	NVDA	M	54.368	59,859.18	135.130	148,778.13	88,918.95	44.04	0.03
883.0000	ORACLE CORP	ORCL	4/10/25	131.124	115,782.14	165.530	146,162.99	30,380.85	1,766.00	1.21
1,011.0000	PALANTIR TECHNOLOGIES INC CL A	PLTR	4/10/25	85.870	86,814.37	131.780	133,229.58	46,415.21	—	—
1,637.0000	REALTY INCOME CORP	O	M	62.293	101,973.04	56.620	92,686.94	(9,286.10)	5,274.41	5.69
64.0000	S&P GLOBAL INC	SPGI	M	339.241	21,711.46	512.860	32,823.04	11,111.58	245.76	0.75
113.0000	SERVICENOW INC	NOW	M	744.773	84,159.36	1,011.090	114,253.17	30,093.81	—	—
704.0000	STARBUCKS CORP	SBUX	M	79.904	56,252.59	83.950	59,100.80	2,848.21	1,717.76	2.91
170.0000	STRYKER CORP	SYK	M	198.675	33,774.70	382.640	65,048.80	31,274.10	571.20	0.88
585.0000	TAIWAN SEMICONDUCTOR MANUFACTURING CO LTD SPON ADR	TSM	4/10/25	148.968	87,146.28	193.320	113,092.20	25,945.92	1,673.33	1.48
834.0000	UBER TECHNOLOGIES INC	UBER	12/26/24	61.618	51,389.15	84.160	70,189.44	18,800.29	—	—
815.0000	VALERO ENERGY CORP	VLO	M	96.293	78,478.53	128.970	105,110.55	26,632.02	3,683.80	3.50
274.0000	VISA INC CL A	V	M	239.402	65,596.28	365.190	100,062.06	34,465.78	646.64	0.65
201.0000	ZOETIS INC CL A	ZTS	M	147.685	29,684.67	168.630	33,894.63	4,209.96	402.00	1.19
	Subtotal - Equities / options				2,169,986.56		3,300,319.37	1,130,332.81	37,177.54	

Holdings details (continued)

Quantity	Holding Description	Security Identifier Ratings	Purchase Date	Cost Basis (\$)	Total Cost Basis (\$)	Market Value (\$)	Total Market Value (\$)	Gain/Loss (\$)	Gain/Loss (\$) Client Investment	Est. Annual Income (\$)	Current Yield (%)
	Mutual Funds										
	ABRDN BLOOMBERG ALL COMMODITY STRATEGY K-1 FREE ETF	BCI									
8,686.0000	Client investment		M	21.096	183,237.20	20.300	176,325.80	(6,911.40)	(6,911.40)	5,651.98	3.20
	CAPITAL GROUP FIXED INCOME U S MULTI SECTOR INCOME ETF	CGMS									
2,198.0000	Client investment		12/26/24	27.186	59,755.60	27.230	59,851.54	95.94	95.94	3,410.85	5.70
	CAPITAL GROUP CORE BOND ETF	CGCB									
8,968.0000	Client investment		M	25.738	230,822.62	26.000	233,168.00	2,345.38	2,345.38	9,906.05	4.25
	ISHARES CORE MSCI EMERGING MARKETS ETF	IEMG									
2,336.0000	Client investment		M	49.654	115,991.98	56.690	132,427.84	16,435.86	16,435.86	3,905.79	2.95
	PACER TRENDPILOT U S LARGE CAP ETF	PTLC									
2,989.0000	Client investment		12/26/24	55.249	165,141.05	48.300	144,368.70	(20,772.35)	(20,772.35)	1,063.48	0.74
	VANGUARD S&P MID CAP 400 INDEX ETF	IVOO									
1,940.0000	Client investment		M	66.590	129,185.69	101.610	197,123.40	67,937.71	67,937.71	2,884.78	1.46
	VANGUARD FTSE ALL WORLD EX US ETF	VEU									
3,089.0000	Client investment		M	45.889	141,752.01	65.230	201,495.47	59,743.46	59,743.46	5,674.49	2.82
	VANGUARD RUSSELL 2000 INDEX FD ETF SHARES	VTWO									
3,205.0000	Client investment		M	66.746	213,920.99	82.990	265,982.95	52,061.96	52,061.96	3,701.77	1.39
	VANGUARD S&P 500 INDEX ETF	VOO									
1,101.0000	Client investment		M	367.571	404,696.00	541.760	596,477.76	191,781.76	191,781.76	7,677.27	1.29
	VANGUARD REAL ESTATE INDEX ETF	VNQ									
2,139.0000	Client investment		M	83.330	178,242.69	89.320	191,055.48	12,812.79	12,812.79	7,770.98	4.07

Holdings details (continued)

Quantity	Holding Description	Security Identifier Ratings	Purchase Date	Cost Basis (\$)	Total Cost Basis (\$)	Market Value (\$)	Total Market Value (\$)	Gain/Loss (\$)	Gain/Loss (\$) Client Investment	Est. Annual Income (\$)	Current Yield (%)
	Mutual Funds (continued)										
	BLACKROCK EMERGING MARKETS INSTL CL	MADCX									
4,763.5080	Client investment		M	26.834	127,825.73	24.770	117,992.07	(9,833.64)	(9,833.66)	—	—
492.0890	Total reinvested		M	28.487	14,018.23	24.770	12,189.06	(1,829.17)	12,189.06		
5,255.5970	Total quantity				141,843.96		130,181.13	(11,662.81)	2,355.40	2,495.35	1.92
	INTERNATIONAL GROWTH & INCOME CL F2	IGFFX									
6,261.0590	Client investment		M	32.638	204,348.87	41.820	261,837.50	57,488.62	57,488.63	—	—
1,732.6340	Total reinvested		M	35.424	61,377.12	41.820	72,458.74	11,081.62	72,458.74		
7,993.6930	Total quantity				265,725.99		334,296.24	68,570.24	129,947.37	8,378.18	2.51
	JPMORGAN MID CAP GROWTH CL I	HLGEX									
4,768.1810	Client investment		M	37.240	177,567.04	50.580	241,174.60	63,607.55	63,607.56	—	—
437.9270	Total reinvested		M	50.943	22,309.41	50.580	22,150.34	(159.07)	22,150.34		
5,206.1080	Total quantity				199,876.45		263,324.94	63,448.48	85,757.90	—	—
	MFS INTL GROWTH CL I	MQGIX									
3,293.6160	Client investment		M	38.294	126,125.18	53.160	175,088.63	48,963.44	48,963.45	—	—
1,042.8130	Total reinvested		M	46.273	48,254.70	53.160	55,435.93	7,181.23	55,435.93		
4,336.4290	Total quantity				174,379.88		230,524.56	56,144.67	104,399.38	2,844.26	1.23
	VANGUARD FEDERAL MONEY MARKET INVESTOR CL	VMFXX									
103,031.0000	Client investment		M	1.000	103,031.00	1.000	103,031.00	—	—	—	—
42,630.3300	Total reinvested		M	1.000	42,630.33	1.000	42,630.33	—	42,630.33		
145,661.3300	Total quantity				145,661.33		145,661.33	—	42,630.33	6,074.07	4.17
	Subtotal - Mutual Funds				2,750,233.44		3,302,265.14	552,031.69	740,621.49	71,439.30	

Included in "Client Investment" are initial purchases and shares not obtained at D.A. Davidson or shares received as a transfer. "Total reinvested" is the total of all dividends and capital gains reinvested. Gain/Loss Client Investment represents a full gain or loss on the total reinvested shares.

Holdings details (continued)

	Total Cost Basis (\$)	Total Market Value (\$)	Gain/Loss (\$)	Estimated Annual Income (\$)
Total security value				
	4,920,220.00	6,602,584.51	1,682,364.50	108,616.84

Activity details

Date	Activity	Quantity	Price (\$)	Description	Total (\$)	Cash (\$)	Margin (\$)	Money Market (\$)	Bank Insured Deposit (\$)
	Opening Balance				22,874.35	537.32	—	—	22,337.03
5/1/25	DIVIDEND		0.0000	CAPITAL GROUP CORE BOND ETF 050125 8,968 (14020Y508)	871.82	871.82	—	—	—
5/1/25	DIVIDEND		0.0000	CAPITAL GROUP FIXED INCOME U S MULTI SECTOR INCOME ETF 050125 2,198 (14020Y300)	317.66	317.66	—	—	—
5/1/25	DIVIDEND		0.0000	VANGUARD FEDERAL MONEY MARKET INVESTOR CL 043025 145,091.19000 (922906300)	570.14	570.14	—	—	—
5/1/25	REINVEST DIV	570.14	0.0000	VANGUARD FEDERAL MONEY MARKET INVESTOR CL REINVEST AT 1.000 (922906300)	(570.14)	(570.14)	—	—	—
5/1/25	DIVIDEND		0.0000	VIRTUS NEWFLEET MULTI SECTOR SHORT TERM BOND CL I 043025 24,861.37800 (92828R610)	152.48	152.48	—	—	—
5/1/25	Cash Sweep Out		1.0000	BANK INSD DEPOSIT ACCT FDIC INSURED	—	(537.32)	—	—	—
5/1/25	BIDP Sweep In		1.0000	BANK INSD DEPOSIT ACCT FDIC INSURED	—	—	—	—	537.32
5/2/25	Cash Sweep Out		1.0000	BANK INSD DEPOSIT ACCT FDIC INSURED	—	(1,341.96)	—	—	—
5/2/25	BIDP Sweep In		1.0000	BANK INSD DEPOSIT ACCT FDIC INSURED	—	—	—	—	1,341.96

Activity details (continued)

Date	Activity	Quantity	Price (\$)	Description	Total (\$)	Cash (\$)	Margin (\$)	Money Market (\$)	Bank Insured Deposit (\$)
5/5/25	INTEREST		0.0000	BANK INSD DEPOSIT ACCT FDIC INSURED 050525 24,220	4.31	—	—	—	4.31
5/6/25	DIVIDEND		0.0000	ASML HOLDING NV NY REGISTRY SHS NEW 2012 050625 91 (N07059210)	190.25	190.25	—	—	—
5/6/25	WITHHOLDING		0.0000	FRGN-W/H @ SOURCE ASML HLDG NV NYRS NEW (N07059210)	(28.54)	(28.54)	—	—	—
5/7/25	DIVIDEND		0.0000	LOWES COMPANIES INC 050725 270 (548661107)	310.50	310.50	—	—	—
5/7/25	Cash Sweep Out		1.0000	BANK INSD DEPOSIT ACCT FDIC INSURED	—	(161.71)	—	—	—
5/7/25	BIDP Sweep In		1.0000	BANK INSD DEPOSIT ACCT FDIC INSURED	—	—	—	—	161.71
5/8/25	DIVIDEND		0.0000	DEERE & CO 050825 134 (244199105)	217.08	217.08	—	—	—
5/8/25	Cash Sweep Out		1.0000	BANK INSD DEPOSIT ACCT FDIC INSURED	—	(310.50)	—	—	—
5/8/25	BIDP Sweep In		1.0000	BANK INSD DEPOSIT ACCT FDIC INSURED	—	—	—	—	310.50
5/9/25	DIVIDEND		0.0000	GENERAL DYNAMICS CORP 050925 435 (369550108)	652.50	652.50	—	—	—
5/9/25	Cash Sweep Out		1.0000	BANK INSD DEPOSIT ACCT FDIC INSURED	—	(217.08)	—	—	—
5/9/25	BIDP Sweep In		1.0000	BANK INSD DEPOSIT ACCT FDIC INSURED	—	—	—	—	217.08
5/12/25	Cash Sweep Out		1.0000	BANK INSD DEPOSIT ACCT FDIC INSURED	—	(652.50)	—	—	—
5/12/25	BIDP Sweep In		1.0000	BANK INSD DEPOSIT ACCT FDIC INSURED	—	—	—	—	652.50
5/15/25	DIVIDEND		0.0000	ACCENTURE PLC IRELAND CL A 051525 164 (G1151C101)	242.72	242.72	—	—	—
5/15/25	DIVIDEND		0.0000	APPLE INC 051525 936 (037833100)	243.36	243.36	—	—	—

Activity details (continued)

Date	Activity	Quantity	Price (\$)	Description	Total (\$)	Cash (\$)	Margin (\$)	Money Market (\$)	Bank Insured Deposit (\$)
5/15/25	DIVIDEND		0.0000	REALTY INCOME CORP 051525 1,637 (756109104)	439.53	439.53	—	—	—
5/16/25	DIVIDEND		0.0000	COSTCO WHOLESALE CORP 051625 121 (22160K105)	157.30	157.30	—	—	—
5/16/25	Cash Sweep Out		1.0000	BANK INSD DEPOSIT ACCT FDIC INSURED	—	(925.61)	—	—	—
5/16/25	BIDP Sweep In		1.0000	BANK INSD DEPOSIT ACCT FDIC INSURED	—	—	—	—	925.61
5/19/25	Cash Sweep Out		1.0000	BANK INSD DEPOSIT ACCT FDIC INSURED	—	(157.30)	—	—	—
5/19/25	BIDP Sweep In		1.0000	BANK INSD DEPOSIT ACCT FDIC INSURED	—	—	—	—	157.30
5/30/25	DIVIDEND		0.0000	STARBUCKS CORP 053025 704 (855244109)	429.44	429.44	—	—	—
5/30/25	INTEREST		0.0000	BANK INSD DEPOSIT ACCT FDIC INSURED 053025 26,677	31.68	—	—	—	31.68
				Totals	27,106.44	429.44	—	—	26,677.00

Bank Insured Deposit Program

Program Balances	Current Value (\$)	Program Balances	Current Value (\$)
US Bank National Association	26,677.00		
Total BIDP Deposits			26,677.00

As of the end of the period covered by this statement you had funds in the amounts and at the bank(s)/money market fund shown above relating to the Bank Insured Deposit Program (BIDP). For other information relating to the BIDP, see the Cash and Cash Equivalent information on page two of this statement for the interest rate earned during the period and the activity details section of this statement for the total interest earned and credited during the period. Funds held in the banks shown above are obligations of those banks and not of D.A. Davidson & Co. Funds held at a money market fund are obligations of the Fund Company and not of D.A. Davidson & Co. Funds held at banks in the BIDP are eligible for insurance to applicable limits by the Federal Deposit Insurance Corporation (FDIC), provided that any additional funds above such deposit limits will be deposited in an account at a designated money market fund. BIDP account funds swept to banks are not protected by Securities Investor Protection Corporation (SIPC). Excess funds swept to a money market fund are subject to SIPC protection. More information about D.A. Davidson's BIDP and applicable limits may be obtained at www.dadavidson.com/bidp. Questions about the BIDP or your balances and account activity in the BIDP should be directed to your Financial Professional.

Below is a full list of banks in the Bank Insured Deposit Program (BIDP) including banks leaving or joining the program. To see which banks are available to your account and the order in which funds are placed in the banks, you will find the most current list at this link: (dadavidson.com/Portals/0/bus-wm/bank%20list/priority_bank_list.pdf)

Bank of Baroda	Bank of East Asia Ltd	Bank of India	Bank of New York Mellon
C3bank NA	Cadence Bank	East West Bank	First Internet Bank of Indiana
Glacier Bank	Goldman Sachs Bank USA	HSBC Bank USA NA	Merrick Bank

Morgan Stanley Bank NA	Morgan Stanley Private Bank	SMBC Manubank	State Bank of India
Synovus Bank	Toyota Financial Savings Bank	TriState Capital Bank	Truist Bank
Umpqua Bank	US Bank NA	Valley National Bank	WEX Bank

Trusted Contact

Name	Phone
Please Provide	Please Provide

If no Trusted Contact information is listed, or the information on file has changed, please contact your Financial Professional.

By providing information about trusted contact person(s), you authorize us to contact the trusted contact person(s) and disclose information about your account to those person(s) in the following circumstances: To address possible financial exploitation, to confirm the specifics of your current contact information, health status, or the identity of any legal guardian, executor, trustee or holder of a power of attorney, or as otherwise permitted by FINRA Rule 2165 (Financial Exploitation of Specified Adults). This designation does not provide trading authority or the ability to act as attorney-in-fact. Please note, your trusted contact must be 18 years or older, cannot be an owner, trustee or attorney-in-fact on the account, or your Financial Professional.

* * * END OF STATEMENT * * *

Your Monthly Portfolio Statement

May 1, 2025 - May 31, 2025

SCMHF Operating Fund



401 North 31st Street
P. O. Box 30918
Billings, MT 59101-0918

Table of Contents

Overview of Your Account.....3

Your Asset Summary.....4

Portfolio Holdings.....5

Your Transaction Detail..... 7

Information.....9

Check out the First Interstate Wealth Management Mobile App

Life doesn't stop at the end of the business day. Stay current on your accounts 24/7/365 with our Wealth Management mobile app. Check account activity, holdings, performance, gain/loss, transactions, and view electronic statements whenever it's convenient for you. Download the First Interstate Wealth Management App from the Apple App Store® or Google Play™ store. Access to the app requires enrollment in our Wealth Management online platform. If you aren't enrolled, contact your Wealth Advisor or Trust Specialist today.

Your Wealth Management Team Contacts
Wealth Advisor: Robert L Leibrich 307-672-1494 robert.leibrich@fib.com
Trust Specialist: Kathy Owen 307-672-1493 Kathy.owen@fib.com

Accounts Included In This Statement
xxxxx4502 SCMHF Operating Fund

Ada Kirven
c/o Sheridan County Hospital Foundat
P.O. Box 391
Sheridan, WY 82801
United States

This page intentionally left blank.

Overview of Your Account - xxxxx4502 SCMHF Operating Fund

Investment Objective: Strategic - Fixed Income Only

Activity Summary

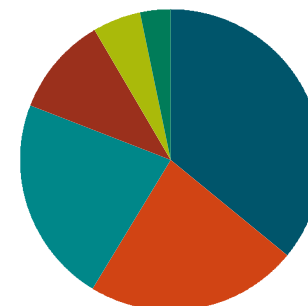
	This Period (\$)	Year to Date (\$)
Beginning Market Value	825,137.54	1,036,838.42
Cash and security transfers	0.00	0.00
Contributions	0.00	0.00
Income & Capital Gain Distributions	2,970.37	13,847.42
Withdrawals and fees	-409.16	-242,275.40
Change in Account Value	-6,732.72	12,555.59
Market Value on May 31, 2025	\$820,966.03	\$820,966.03

Income Earned

	This Period (\$)	Year to Date (\$)
Taxable Income	0.00	0.00
Tax-Exempt Income	2,970.37	13,847.42
Tax-Deferred Income	0.00	0.00
Total Income Earned	\$2,970.37	\$13,847.42
Total Short Term Realized Capital Gain/Loss	\$0.00	-\$539.70
Total Long Term Realized Capital Gain/Loss	\$0.00	-\$5,751.18
Total Realized Capital Gain/Loss	\$0.00	-\$6,290.88

Asset Allocation on May 31, 2025

	Market Value (\$)	Percent
■ US Treasuries	295,101.67	36%
■ Mortgage Backed Securities	186,390.77	23%
■ Corporate Bonds	182,807.64	22%
■ Uncategorized	87,312.70	11%
■ High Yield	42,110.78	5%
■ TIPs	27,242.47	3%
Total of Your Account	\$820,966.03	100%



Your Asset Summary on May 31, 2025

	Market Value	Cost Basis	Unrealized Gain or Loss	Estimated Annual Income	Yield at Market	% of Account
xxxxx4502 SCMHF Operating Fund						
<i>Main (Capital)</i>						
Cash & Cash Equivalents	87,312.70	87,000.41	0.00	3,647.06	4.19%	10.64%
<i>Main (Capital)</i>						
Fixed Income						
US Treasuries	295,101.67	296,546.43	-1,444.76	11,435.71	3.88%	35.94%
TIPs	27,242.47	26,392.45	850.02	745.15	2.74%	3.32%
Mortgage Backed Securities	186,390.77	186,445.45	-54.68	8,822.76	4.73%	22.70%
Corporate Bonds	182,807.64	178,191.66	4,615.98	8,225.45	4.50%	22.27%
High Yield	42,110.78	40,233.11	1,641.05	2,846.00	6.80%	5.13%
Fixed Income	\$733,653.33	\$727,809.10	\$5,607.61	\$32,075.07	4.37%	89.36%
Total For Main (Capital)	\$820,966.03	\$814,809.51	\$5,607.61	\$35,722.13	4.35%	100.00%
xxxxx4502 SCMHF Operating Fund	\$820,966.03	\$814,809.51	\$5,607.61	\$35,722.13	4.35%	100.00%

Portfolio Holdings on May 31, 2025

	Number of Shares	Share price	Market Value	Accrued Income	Cost Basis / Unrealized G/L	Est. Ann. Inc. /Yield at Market	% of Account
xxxxx4502 SCMHF Operating Fund							
<i>Main (Capital)</i>							
Cash & Cash Equivalents							
Federated Hermes Government Obligations Fund (TICKER: GOFXX - CUSIP:608919718)	87,000.41	1.00	87,000.41	312.29	87,000.41 0.00	3,647.06 4.19%	10.64%
Total Cash & Cash Equivalents			\$87,000.41	\$312.29	\$87,000.41 \$0.00	\$3,647.06 4.19%	10.64%
Fixed Income							
<i>US Treasuries</i>							
iShares 20+ Year Treasury Bond ETF (TICKER: TLT - CUSIP:464287432)	653.00	86.28	56,340.84	0.00	61,057.00 -4,716.16	2,471.61 4.39%	6.86%
Vanguard Intermediate-Term Treasury ETF (TICKER: VGIT - CUSIP:92206C706)	4,027.00	59.29	238,760.83	0.00	235,489.43 3,271.40	8,964.10 3.75%	29.08%
Total US Treasuries			\$295,101.67	\$0.00	\$296,546.43 -\$1,444.76	\$11,435.71 3.88%	35.94%
<i>TIPs</i>							
Vanguard Short-Term Inflation-Protected Securities Index Fund (TICKER: VTAPX - CUSIP:922020706)	1,086.223	25.08	27,242.47	0.00	26,392.45 850.02	745.15 2.74%	3.32%
Total TIPs			\$27,242.47	\$0.00	\$26,392.45 \$850.02	\$745.15 2.74%	3.32%
<i>Mortgage Backed Securities</i>							
DoubleLine Total Return Bond Fund (TICKER: DBLTX - CUSIP:258620103)	14,276.772	8.74	124,778.99	0.00	124,806.18 -27.19	6,267.50 5.02%	15.20%
Vanguard Mortgage-Backed Securities ETF (TICKER: VMBS - CUSIP:92206C771)	1,347.00	45.74	61,611.78	0.00	61,639.27 -27.49	2,555.26 4.15%	7.50%
Total Mortgage Backed Securities			\$186,390.77	\$0.00	\$186,445.45 -\$54.68	\$8,822.76 4.73%	22.70%

Portfolio Holdings on May 31, 2025 (continued)

	Number of Shares	Share price	Market Value	Accrued Income	Cost Basis / Unrealized G/L	Est. Ann. Inc. /Yield at Market	% of Account
xxxxx4502 SCMHF Operating Fund (continued)							
<i>Main (Capital) (continued)</i>							
Fixed Income (continued)							
<i>Corporate Bonds</i>							
Vanguard Intermediate-Term Corporate Bond ETF (TICKER: VCIT - CUSIP:92206C870)	2,237.00	81.72	182,807.64	0.00	178,191.66 4,615.98	8,225.45 4.50%	22.27%
Total Corporate Bonds			\$182,807.64	\$0.00	\$178,191.66 \$4,615.98	\$8,225.45 4.50%	22.27%
<i>High Yield</i>							
Artisan High Income Fund (TICKER: APHFX - CUSIP:04314H568)	2,961.90	9.16	27,131.00	156.86	26,055.01 1,075.99	1,925.23 7.10%	3.32%
Vanguard High-Yield Corporate Fund (TICKER: VWEAX - CUSIP:922031760)	2,700.212	5.46	14,743.16	79.76	14,178.10 565.06	920.77 6.25%	1.81%
Total High Yield			\$41,874.16	\$236.62	\$40,233.11 \$1,641.05	\$2,846.00 6.80%	5.13%
Total Fixed Income			\$733,416.71	\$236.62	\$727,809.10 \$5,607.61	\$32,075.07 4.37%	89.36%
Total For Main (Capital)			\$820,417.12	\$548.91	\$814,809.51 \$5,607.61	\$35,722.13 4.35%	100.00%
Total xxxxx4502 SCMHF Operating Fund			\$820,417.12	\$548.91	\$814,809.51 \$5,607.61	\$35,722.13 4.35%	100.00%

Your Transaction Detail

Trade Date	Transaction Description	Amount	Accrued Income	Realized G/L
xxxxx4502 SCMHF Operating Fund				
Disbursements				
<i>Fees</i>				
May 27, 2025	Periodic Fee: Taken Monthly \$409.16 (04/16/25 to 05/15/25) Flat Percentage Fee: \$409.16 Based on Average Daily Market Value of \$2,894,685.44 @ an annual rate of 1.00% = \$28,946.85. Monthly Fee: \$2,412.24. Discount of \$964.90 applied (based on a rate of 40.00%). Account 100104502: \$409.16. Charged now \$409.16. Note: Fee is computed based on all accounts in the fee group. The remainder of the fee may be collected from other accounts in the fee group.	-409.16		0.00
Total Fees		-\$409.16	\$0.00	\$0.00
Total Disbursements		-\$409.16	\$0.00	\$0.00
Corporate Actions/Income				
<i>Dividends</i>				
April 30, 2025	Cash Dividend 0.03446637 USD DoubleLine Total Return Bond Fund For 14,276.772 Units Due on 04/30/25 With Ex Date 04/30/25, CUSIP 258620103, TICKER DBLTX	492.07		0.00
May 1, 2025	Daily Rate Income on Federated Hermes Government Obligations Fund For Period of 04/01/25 to 04/30/25 Due on 05/01/25, CUSIP 608919718, TICKER GOFXX	295.60		0.00
May 1, 2025	Daily Rate Income on Vanguard High-Yield Corporate Fund For Period of 04/01/25 to 04/30/25 Due on 05/01/25, CUSIP 922031760, TICKER VWEAX	79.03		0.00
May 1, 2025	Daily Rate Income on Artisan High Income Fund For Period of 04/01/25 to 04/30/25 Due on 05/01/25, CUSIP 04314H568, TICKER APHFX	164.71		0.00
May 5, 2025	Cash Dividend 0.1872 USD Vanguard Intermediate-Term Treasury ETF For 4,027.00 Shares Due on 05/05/25 With Ex Date 05/01/25, CUSIP 92206C706, TICKER VGIT	753.85		0.00
May 5, 2025	Cash Dividend 0.1977 USD Vanguard Mortgage-Backed Securities ETF For 1,347.00 Shares Due on 05/05/25 With Ex Date 05/01/25, CUSIP 92206C771, TICKER VMBS	266.30		0.00
May 5, 2025	Cash Dividend 0.3151 USD Vanguard Intermediate-Term Corporate Bond ETF For 2,237.00 Shares Due on 05/05/25 With Ex Date 05/01/25, CUSIP 92206C870, TICKER VCIT	704.88		0.00

Your Transaction Detail (continued)

Trade Date	Transaction Description	Amount	Accrued Income	Realized G/L
xxxxx4502 SCMHF Operating Fund (Continued)				
Corporate Actions/Income (Continued)				
<i>Dividends (Continued)</i>				
May 6, 2025	Cash Dividend 0.327612 USD iShares 20+ Year Treasury Bond ETF For 653.00 Shares Due on 05/06/25 With Ex Date 05/01/25, CUSIP 464287432, TICKER TLT	213.93		0.00
Total Dividends		\$2,970.37	\$0.00	\$0.00
Total Corporate Actions/Income		\$2,970.37	\$0.00	\$0.00
Cash Sweep Activity				
May 31, 2025	Sweep sales totaling -409.16 units of Federated Hermes Government Obligations Fund for Main (Capital) (1 Transactions)	409.16		0.00
May 31, 2025	Sweep purchases totaling 2,970.37 units of Federated Hermes Government Obligations Fund for Main (Capital) (7 Transactions)	-2,970.37		0.00
Total Cash Sweep Activity		-\$2,561.21	\$0.00	\$0.00
Total xxxxx4502 SCMHF Operating Fund		\$0.00	\$0.00	\$0.00

Information

Positions on this statement are shown as of the trade date. Proceeds from the sale of securities and costs for the purchase of securities are not transacted through your account until the actual settlement date of the trade which may be up to three business days after the trade date or longer for certain securities with an extended settlement date. All cash activity will be shown as of the settlement date.

Privacy Statement

Federal law requires us to tell you how we collect, share, and protect your personal information. Our privacy policy has not changed and you may review our policy and practices with respect to your personal information at <https://www.firstinterstatebank.com/support/disclosures/privacy.html> or we will mail you a free copy upon request if you call us at 1-888-752-3332.

Information (continued)

This page intentionally left blank.

Your Monthly Portfolio Statement

May 1, 2025 - May 31, 2025

SCMHF Unrestricted Fund



401 North 31st Street
P. O. Box 30918
Billings, MT 59101-0918

Table of Contents

Overview of Your Account.....	3
Your Asset Summary.....	4
Portfolio Holdings.....	5
Your Transaction Detail.....	12
Information.....	15

Check out the First Interstate Wealth Management Mobile App

Life doesn't stop at the end of the business day. Stay current on your accounts 24/7/365 with our Wealth Management mobile app. Check account activity, holdings, performance, gain/loss, transactions, and view electronic statements whenever it's convenient for you. Download the First Interstate Wealth Management App from the Apple App Store® or Google Play™ store. Access to the app requires enrollment in our Wealth Management online platform. If you aren't enrolled, contact your Wealth Advisor or Trust Specialist today.

Your Wealth Management Team Contacts

Wealth Advisor: Robert L Leibrich 307-672-1494 robert.leibrich@fib.com

Accounts Included In This Statement

xxxx4790 SCMHF Unrestricted Fund

Amber Quarterman

Mohatt Johnson & Godwin, LLP
352 Whittney Lane
PO Box 603
Sheridan, WY 82801
United States

This page intentionally left blank.

Overview of Your Account - xxxx4790 SCMHF Unrestricted Fund

Investment Objective: Tactical - High Growth

Activity Summary

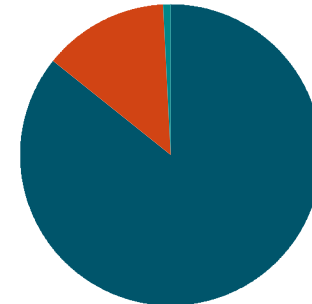
	This Period (\$)	Year to Date (\$)
Beginning Market Value	2,080,253.03	2,088,074.60
Cash and security transfers	0.00	0.00
Contributions	0.00	0.00
Income & Capital Gain Distributions	1,879.58	12,079.14
Withdrawals and fees	-1,038.18	-5,250.72
Change in Account Value	84,053.68	70,245.09
Market Value on May 31, 2025	\$2,165,148.11	\$2,165,148.11

Income Earned

	This Period (\$)	Year to Date (\$)
Taxable Income	1,879.58	12,079.14
Tax-Exempt Income	0.00	0.00
Tax-Deferred Income	0.00	0.00
Total Income Earned	\$1,879.58	\$12,079.14
Total Short Term Realized Capital Gain/Loss	\$0.00	\$6,684.17
Total Long Term Realized Capital Gain/Loss	\$0.00	\$62,441.35
Total Realized Capital Gain/Loss	\$0.00	\$69,125.52

Asset Allocation on May 31, 2025

	Market Value (\$)	Percent
■ Equity	1,856,151.48	86%
■ Fixed Income	291,014.70	13%
■ Cash & Cash Equivalents	17,981.93	1%
Total of Your Account	\$2,165,148.11	100%



Your Asset Summary on May 31, 2025

	Market Value	Cost Basis	Unrealized Gain or Loss	Estimated Annual Income	Yield at Market	% of Account
xxxx4790 SCMHF Unrestricted Fund						
Cash & Cash Equivalents	17,981.93	17,915.47	0.00	751.02	4.19%	0.83%
xxxx4790 SCMHF Unrestricted Fund						
Fixed Income						
US Treasuries	5,573.26	5,484.72	88.54	209.24	3.75%	0.26%
TIPs	7,433.06	7,231.52	201.54	203.31	2.74%	0.34%
Mortgage Backed Securities	56,494.49	57,506.05	-1,011.56	2,672.66	4.73%	2.61%
Corporate Bonds	75,316.26	74,237.99	1,078.27	3,527.79	4.68%	3.48%
High Yield	96,469.28	93,510.14	2,419.38	6,466.97	6.74%	4.45%
Preferred Stock	49,728.35	51,471.51	-1,743.16	3,321.26	6.68%	2.30%
Fixed Income	\$291,014.70	\$289,441.93	\$1,033.01	\$16,401.23	5.65%	13.44%
Equity						
International - Developed	449,869.91	340,039.16	109,830.75	12,648.63	2.81%	20.78%
International - Emerging Mkts	200,314.27	170,339.33	29,974.94	3,918.22	1.96%	9.25%
US Large Cap Equities	1,128,479.74	845,368.92	282,775.34	16,337.31	1.45%	52.12%
US Small/Mid Cap Equities	77,487.56	69,817.65	7,669.91	1,360.59	1.76%	3.58%
Equity	\$1,856,151.48	\$1,425,565.06	\$430,250.94	\$34,264.75	1.85%	85.73%
xxxx4790 SCMHF Unrestricted Fund	\$2,165,148.11	\$1,732,922.46	\$431,283.95	\$51,417.00	2.38%	100.00%

Portfolio Holdings on May 31, 2025

	Number of Shares	Share price	Market Value	Accrued Income	Cost Basis / Unrealized G/L	Est. Ann. Inc. /Yield at Market	% of Account
xxxx4790 SCMHF Unrestricted Fund							
Cash & Cash Equivalents							
Federated Hermes Government Obligations Fund (TICKER: GOFXX - CUSIP:608919718)	17,915.47	1.00	17,915.47	66.46	17,915.47 0.00	751.02 4.19%	0.83%
Total Cash & Cash Equivalents			\$17,915.47	\$66.46	\$17,915.47 \$0.00	\$751.02 4.19%	0.83%
Fixed Income							
US Treasuries							
Vanguard Intermediate-Term Treasury ETF (TICKER: VGIT - CUSIP:92206C706)	94.00	59.29	5,573.26	0.00	5,484.72 88.54	209.24 3.75%	0.26%
Total US Treasuries			\$5,573.26	\$0.00	\$5,484.72 \$88.54	\$209.24 3.75%	0.26%
TIPs							
Vanguard Short-Term Inflation-Protected Securities Index Fund (TICKER: VTAPX - CUSIP:922020706)	296.374	25.08	7,433.06	0.00	7,231.52 201.54	203.31 2.74%	0.34%
Total TIPs			\$7,433.06	\$0.00	\$7,231.52 \$201.54	\$203.31 2.74%	0.34%
Mortgage Backed Securities							
DoubleLine Total Return Bond Fund (TICKER: DBLTX - CUSIP:258620103)	4,307.736	8.74	37,649.61	0.00	38,732.00 -1,082.39	1,891.10 5.02%	1.74%
Vanguard Mortgage-Backed Securities ETF (TICKER: VMBS - CUSIP:92206C771)	412.00	45.74	18,844.88	0.00	18,774.05 70.83	781.56 4.15%	0.87%
Total Mortgage Backed Securities			\$56,494.49	\$0.00	\$57,506.05 -\$1,011.56	\$2,672.66 4.73%	2.61%

Portfolio Holdings on May 31, 2025 (continued)

	Number of Shares	Share price	Market Value	Accrued Income	Cost Basis / Unrealized G/L	Est. Ann. Inc. /Yield at Market	% of Account
xxxx4790 SCMHF Unrestricted Fund (continued)							
Fixed Income (continued)							
<i>Corporate Bonds</i>							
iShares iBonds Dec 2032 Term Corporate ETF (TICKER: IBDX - CUSIP:46436E312)	567.00	24.98	14,163.66	0.00	13,996.40 167.26	704.78 4.98%	0.65%
iShares iBonds Dec 2033 Term Corporate ETF (TICKER: IBDY - CUSIP:46436E130)	555.00	25.52	14,163.60	0.00	14,041.50 122.10	708.73 5.00%	0.65%
Vanguard Intermediate-Term Corporate Bond ETF (TICKER: VCIT - CUSIP:92206C870)	575.00	81.72	46,989.00	0.00	46,200.09 788.91	2,114.28 4.50%	2.18%
Total Corporate Bonds			\$75,316.26	\$0.00	\$74,237.99 \$1,078.27	\$3,527.79 4.68%	3.48%
<i>High Yield</i>							
Artisan High Income Fund (TICKER: APHFX - CUSIP:04314H568)	6,105.912	9.16	55,930.15	323.36	54,110.46 1,819.69	3,968.84 7.10%	2.59%
Vanguard High-Yield Corporate Fund (TICKER: VWEAX - CUSIP:922031760)	7,325.892	5.46	39,999.37	216.40	39,399.68 599.69	2,498.13 6.25%	1.86%
Total High Yield			\$95,929.52	\$539.76	\$93,510.14 \$2,419.38	\$6,466.97 6.74%	4.45%
<i>Preferred Stock</i>							
iShares Preferred and Income Securities ETF (TICKER: PFF - CUSIP:464288687)	1,645.00	30.23	49,728.35	0.00	51,471.51 -1,743.16	3,321.26 6.68%	2.30%
Total Preferred Stock			\$49,728.35	\$0.00	\$51,471.51 -\$1,743.16	\$3,321.26 6.68%	2.30%
Total Fixed Income			\$290,474.94	\$539.76	\$289,441.93 \$1,033.01	\$16,401.23 5.65%	13.44%

Portfolio Holdings on May 31, 2025 (continued)

	Number of Shares	Share price	Market Value	Accrued Income	Cost Basis / Unrealized G/L	Est. Ann. Inc. /Yield at Market	% of Account
xxx4790 SCMHF Unrestricted Fund (continued)							
Equity							
<i>International - Developed</i>							
Fidelity International Index Fund (TICKER: FSPSX - CUSIP:315911727)	4,000.374	55.93	223,740.92	0.00	159,483.29 64,257.63	6,224.58 2.78%	10.33%
iShares Currency Hedged MSCI EAFE ETF (TICKER: HEFA - CUSIP:46434V803)	5,987.00	37.77	226,128.99	0.00	180,555.87 45,573.12	6,424.05 2.84%	10.45%
Total International - Developed			\$449,869.91	\$0.00	\$340,039.16 \$109,830.75	\$12,648.63 2.81%	20.78%
<i>International - Emerging Mkts</i>							
Fidelity Emerging Markets Index Fund (TICKER: FPADX - CUSIP:316146331)	9,872.623	11.37	112,251.72	0.00	95,114.29 17,137.43	2,784.08 2.48%	5.18%
Goldman Sachs Emerging Markets Equity Insights Fund (TICKER: GERIX - CUSIP:38144N569)	9,530.579	9.24	88,062.55	0.00	75,225.04 12,837.51	1,134.14 1.29%	4.07%
Total International - Emerging Mkts			\$200,314.27	\$0.00	\$170,339.33 \$29,974.94	\$3,918.22 1.96%	9.25%
<i>US Large Cap Equities</i>							
Abbott Laboratories (TICKER: ABT - CUSIP:002824100)	32.00	133.58	4,274.56	0.00	2,778.36 1,496.20	75.52 1.77%	0.20%
Alphabet Inc (TICKER: GOOGL - CUSIP:02079K305)	109.00	171.74	18,719.66	0.00	5,260.34 13,459.32	88.29 0.47%	0.86%
Amazon.com Inc (TICKER: AMZN - CUSIP:023135106)	155.00	205.01	31,776.55	0.00	16,959.45 14,817.10	0.00	1.47%
American Express Co (TICKER: AXP - CUSIP:025816109)	44.00	294.05	12,938.20	0.00	4,322.40 8,615.80	144.32 1.12%	0.60%
Apple Inc (TICKER: AAPL - CUSIP:037833100)	169.00	200.85	33,943.65	0.00	18,120.11 15,823.54	175.76 0.52%	1.57%
Berkshire Hathaway Inc (TICKER: BRK/B - CUSIP:084670702)	31.00	503.96	15,622.76	0.00	4,901.87 10,720.89	0.00	0.72%

Portfolio Holdings on May 31, 2025 (continued)

	Number of Shares	Share price	Market Value	Accrued Income	Cost Basis / Unrealized G/L	Est. Ann. Inc. /Yield at Market	% of Account
xxxx4790 SCMHF Unrestricted Fund (continued)							
Equity (continued)							
<i>US Large Cap Equities (continued)</i>							
Blackstone Inc (TICKER: BX - CUSIP:09260D107)	71.00	138.76	9,851.96	0.00	5,732.33 4,119.63	157.26 1.60%	0.46%
Bristol-Myers Squibb Co (TICKER: BMY - CUSIP:110122108)	97.00	48.28	4,683.16	0.00	5,180.90 -497.74	240.56 5.14%	0.22%
Cisco Systems Inc (TICKER: CSCO - CUSIP:17275R102)	270.00	63.04	17,020.80	0.00	10,579.71 6,441.09	442.80 2.60%	0.79%
Citigroup Inc (TICKER: C - CUSIP:172967424)	94.00	75.32	7,080.08	0.00	6,878.33 201.75	210.56 2.97%	0.33%
Communication Services Select Sector SPDR Fund (TICKER: XLC - CUSIP:81369Y852)	279.00	101.40	28,290.60	0.00	19,547.14 8,743.46	289.04 1.02%	1.31%
Consumer Discretionary Select Sector SPDR Fund (TICKER: XLY - CUSIP:81369Y407)	17.00	213.80	3,634.60	0.00	2,603.54 1,031.06	30.12 0.83%	0.17%
Consumer Staples Select Sector SPDR Fund (TICKER: XLP - CUSIP:81369Y308)	101.00	82.83	8,365.83	0.00	6,457.16 1,908.67	206.14 2.46%	0.39%
Costco Wholesale Corp (TICKER: COST - CUSIP:22160K105)	10.00	1,040.18	10,401.80	0.00	3,486.82 6,914.98	52.00 0.50%	0.48%
Emerson Electric Co (TICKER: EMR - CUSIP:291011104)	44.00	119.38	5,252.72	23.21	3,240.96 2,011.76	92.84 1.77%	0.24%
Energy Select Sector SPDR Fund (TICKER: XLE - CUSIP:81369Y506)	358.00	81.53	29,187.74	0.00	17,236.41 11,951.33	1,023.52 3.51%	1.35%
Financial Select Sector SPDR Fund (TICKER: XLF - CUSIP:81369Y605)	225.00	50.96	11,466.00	0.00	8,991.07 2,474.93	160.43 1.40%	0.53%
Health Care Select Sector SPDR Fund (TICKER: XLV - CUSIP:81369Y209)	182.00	132.64	24,140.48	0.00	19,882.68 4,257.80	425.15 1.76%	1.11%

Portfolio Holdings on May 31, 2025 (continued)

	Number of Shares	Share price	Market Value	Accrued Income	Cost Basis / Unrealized G/L	Est. Ann. Inc. /Yield at Market	% of Account
xxxx4790 SCMHF Unrestricted Fund (continued)							
Equity (continued)							
<i>US Large Cap Equities (continued)</i>							
Honeywell International Inc (TICKER: HON - CUSIP:438516106)	47.00	226.67	10,653.49	53.11	9,312.46 1,341.03	212.44 1.99%	0.49%
Industrial Select Sector SPDR Fund (TICKER: XLI - CUSIP:81369Y704)	165.00	142.82	23,565.30	0.00	17,778.23 5,787.07	317.96 1.35%	1.09%
Invesco S&P 500 Equal Weight ETF (TICKER: RSP - CUSIP:46137V357)	1,935.00	176.43	341,392.05	0.00	347,142.11 -5,750.06	5,435.42 1.59%	15.74%
iShares Biotechnology ETF (TICKER: IBB - CUSIP:464287556)	69.00	121.72	8,398.68	0.00	9,000.17 -601.49	26.50 0.32%	0.39%
iShares Core S&P 500 ETF (TICKER: IVV - CUSIP:464287200)	251.00	592.15	148,629.65	0.00	71,881.35 76,748.30	1,934.71 1.30%	6.86%
iShares Semiconductor ETF (TICKER: SOXX - CUSIP:464287523)	42.00	204.94	8,607.48	0.00	10,731.84 -2,124.36	62.24 0.72%	0.40%
JPMorgan Chase & Co (TICKER: JPM - CUSIP:46625H100)	41.00	264.00	10,824.00	0.00	4,788.32 6,035.68	229.60 2.12%	0.50%
Lowe's Cos Inc (TICKER: LOW - CUSIP:548661107)	67.00	225.73	15,123.91	0.00	7,798.34 7,325.57	321.60 2.13%	0.70%
Masco Corp (TICKER: MAS - CUSIP:574599106)	65.00	62.42	4,057.30	20.15	3,816.38 240.92	80.60 1.99%	0.19%
Materials Select Sector SPDR Fund (TICKER: XLB - CUSIP:81369Y100)	147.00	86.34	12,691.98	0.00	11,253.38 1,438.60	249.17 1.96%	0.59%
McDonald's CORP (TICKER: MCD - CUSIP:580135101)	42.00	313.85	13,181.70	0.00	10,139.00 3,042.70	297.36 2.26%	0.61%
Meta Platforms Inc (TICKER: META - CUSIP:30303M102)	10.00	647.49	6,474.90	0.00	5,890.44 584.46	21.00 0.32%	0.30%
Microsoft CORP (TICKER: MSFT - CUSIP:594918104)	92.00	460.36	42,353.12	76.36	22,032.45 20,320.67	305.44 0.72%	1.96%

Portfolio Holdings on May 31, 2025 (continued)

	Number of Shares	Share price	Market Value	Accrued Income	Cost Basis / Unrealized G/L	Est. Ann. Inc. /Yield at Market	% of Account
xxxx4790 SCMHF Unrestricted Fund (continued)							
Equity (continued)							
<i>US Large Cap Equities (continued)</i>							
Mondelez International Inc (TICKER: MDLZ - CUSIP:609207105)	121.00	67.49	8,166.29	0.00	6,830.28 1,336.01	227.48 2.79%	0.38%
NVIDIA Corp (TICKER: NVDA - CUSIP:67066G104)	35.00	135.13	4,729.55	0.00	4,086.59 642.96	1.40 0.03%	0.22%
Palo Alto Networks Inc (TICKER: PANW - CUSIP:697435105)	142.00	192.42	27,323.64	0.00	14,138.78 13,184.86	0.00	1.26%
PepsiCo Inc (TICKER: PEP - CUSIP:713448108)	28.00	131.45	3,680.60	0.00	2,908.92 771.68	159.32 4.33%	0.17%
Pfizer Inc (TICKER: PFE - CUSIP:717081103)	291.00	23.49	6,835.59	125.13	7,507.36 -671.77	500.52 7.32%	0.32%
Real Estate Select Sector SPDR Fund (TICKER: XLRE - CUSIP:81369Y860)	307.00	41.73	12,811.11	0.00	11,820.28 990.83	428.57 3.35%	0.59%
Salesforce Inc (TICKER: CRM - CUSIP:79466L302)	28.00	265.37	7,430.36	0.00	6,416.45 1,013.91	46.59 0.63%	0.34%
SPDR S&P Regional Banking ETF (TICKER: KRE - CUSIP:78464A698)	167.00	56.88	9,498.96	0.00	9,987.50 -488.54	261.19 2.75%	0.44%
SPDR S&P Semiconductor ETF (TICKER: XSD - CUSIP:78464A862)	53.00	221.13	11,719.89	0.00	10,250.41 1,469.48	32.44 0.28%	0.54%
Technology Select Sector SPDR Fund (TICKER: XLK - CUSIP:81369Y803)	250.00	230.91	57,727.50	0.00	40,458.02 17,269.48	389.75 0.68%	2.67%
Union Pacific Corp (TICKER: UNP - CUSIP:907818108)	28.00	221.66	6,206.48	37.52	4,345.16 1,861.32	150.08 2.42%	0.29%
UnitedHealth Group INC (TICKER: UNH - CUSIP:91324P102)	18.00	301.91	5,434.38	0.00	4,350.75 1,083.63	151.20 2.78%	0.25%
Utilities Select Sector SPDR Fund (TICKER: XLU - CUSIP:81369Y886)	180.00	81.92	14,745.60	0.00	12,259.59 2,486.01	410.04 2.78%	0.68%

Portfolio Holdings on May 31, 2025 (continued)

	Number of Shares	Share price	Market Value	Accrued Income	Cost Basis / Unrealized G/L	Est. Ann. Inc. /Yield at Market	% of Account
xxxx4790 SCMHF Unrestricted Fund (continued)							
Equity (continued)							
<i>US Large Cap Equities (continued)</i>							
Walmart Inc (TICKER: WMT - CUSIP:931142103)	177.00	98.72	17,473.44	0.00	5,729.13 11,744.31	166.38 0.95%	0.81%
Walt Disney Co (TICKER: DIS - CUSIP:254687106)	104.00	113.04	11,756.16	0.00	10,555.65 1,200.51	104.00 0.88%	0.54%
Total US Large Cap Equities			\$1,128,144.26	\$335.48	\$845,368.92 \$282,775.34	\$16,337.31 1.45%	52.12%
<i>US Small/Mid Cap Equities</i>							
iShares Core S&P Mid-Cap ETF (TICKER: IJH - CUSIP:464287507)	729.00	60.04	43,769.16	0.00	35,193.20 8,575.96	605.07 1.38%	2.02%
iShares Core S&P Small-Cap ETF (TICKER: IJR - CUSIP:464287804)	320.00	105.37	33,718.40	0.00	34,624.45 -906.05	755.52 2.24%	1.56%
Total US Small/Mid Cap Equities			\$77,487.56	\$0.00	\$69,817.65 \$7,669.91	\$1,360.59 1.76%	3.58%
Total Equity			\$1,855,816.00	\$335.48	\$1,425,565.06 \$430,250.94	\$34,264.75 1.85%	85.73%
Total xxxx4790 SCMHF Unrestricted Fund			\$2,164,206.41	\$941.70	\$1,732,922.46 \$431,283.95	\$51,417.00 2.38%	100.00%

Your Transaction Detail

Trade Date	Transaction Description	Amount	Accrued Income	Realized G/L
xxxx4790 SCMHF Unrestricted Fund				
Disbursements				
<i>Fees</i>				
May 27, 2025	Periodic Fee: Taken Monthly \$1,038.18 (04/16/25 to 05/15/25) Flat Percentage Fee: \$1,038.18 Based on Average Daily Market Value of \$2,894,685.44 @ an annual rate of 1.00% = \$28,946.85. Monthly Fee: \$2,412.24. Discount of \$964.90 applied (based on a rate of 40.00%). Account 52634790: \$1,038.18. Charged now \$1,038.18. Note: Fee is computed based on all accounts in the fee group. The remainder of the fee may be collected from other accounts in the fee group.	-1,038.18		0.00
Total Fees		-\$1,038.18	\$0.00	\$0.00
Total Disbursements		-\$1,038.18	\$0.00	\$0.00
Corporate Actions/Income				
<i>Dividends</i>				
April 30, 2025	Cash Dividend 0.03446637 USD DoubleLine Total Return Bond Fund For 4,307.736 Units Due on 04/30/25 With Ex Date 04/30/25, CUSIP 258620103, TICKER DBLTX	148.47		0.00
May 1, 2025	Cash Dividend 0.62 USD Bristol-Myers Squibb Co For 97.00 Shares Due on 05/01/25 With Ex Date 04/04/25, CUSIP 110122108, TICKER BMY	60.14		0.00
May 1, 2025	Daily Rate Income on Federated Hermes Government Obligations Fund For Period of 04/01/25 to 04/30/25 Due on 05/01/25, CUSIP 608919718, TICKER GOFXX	81.87		0.00
May 1, 2025	Daily Rate Income on Vanguard High-Yield Corporate Fund For Period of 04/01/25 to 04/30/25 Due on 05/01/25, CUSIP 922031760, TICKER VWEAX	214.41		0.00
May 1, 2025	Daily Rate Income on Artisan High Income Fund For Period of 04/01/25 to 04/30/25 Due on 05/01/25, CUSIP 04314H568, TICKER APHFX	339.55		0.00
May 5, 2025	Cash Dividend 0.93 USD Blackstone Inc For 71.00 Shares Due on 05/05/25 With Ex Date 04/28/25, CUSIP 09260D107, TICKER BX	66.03		0.00
May 5, 2025	Cash Dividend 0.1872 USD Vanguard Intermediate-Term Treasury ETF For 94.00 Shares Due on 05/05/25 With Ex Date 05/01/25, CUSIP 92206C706, TICKER VGIT	17.60		0.00
May 5, 2025	Cash Dividend 0.1977 USD Vanguard Mortgage-Backed Securities ETF For 412.00 Shares Due on 05/05/25 With Ex Date 05/01/25, CUSIP 92206C771, TICKER VMBS	81.45		0.00

Your Transaction Detail (continued)

Trade Date	Transaction Description	Amount	Accrued Income	Realized G/L
xxxx4790 SCMHF Unrestricted Fund (Continued)				
Corporate Actions/Income (Continued)				
<i>Dividends (Continued)</i>				
May 5, 2025	Cash Dividend 0.3151 USD Vanguard Intermediate-Term Corporate Bond ETF For 575.00 Shares Due on 05/05/25 With Ex Date 05/01/25, CUSIP 92206C870, TICKER VCIT	181.18		0.00
May 6, 2025	Cash Dividend 0.107791 USD iShares iBonds Dec 2033 Term Corporate ETF For 555.00 Shares Due on 05/06/25 With Ex Date 05/01/25, CUSIP 46436E130, TICKER IBDY	59.82		0.00
May 6, 2025	Cash Dividend 0.104815 USD iShares iBonds Dec 2032 Term Corporate ETF For 567.00 Shares Due on 05/06/25 With Ex Date 05/01/25, CUSIP 46436E312, TICKER IBDX	59.43		0.00
May 6, 2025	Cash Dividend 0.174129 USD iShares Preferred and Income Securities ETF For 1,645.00 Shares Due on 05/06/25 With Ex Date 05/01/25, CUSIP 464288687, TICKER PFF	286.44		0.00
May 7, 2025	Cash Dividend 1.15 USD Lowe's Cos Inc For 67.00 Shares Due on 05/07/25 With Ex Date 04/23/25, CUSIP 548661107, TICKER LOW	77.05		0.00
May 9, 2025	Cash Dividend 0.82 USD American Express Co For 44.00 Shares Due on 05/09/25 With Ex Date 04/04/25, CUSIP 025816109, TICKER AXP	36.08		0.00
May 15, 2025	Cash Dividend 0.59 USD Abbott Laboratories For 32.00 Shares Due on 05/15/25 With Ex Date 04/15/25, CUSIP 002824100, TICKER ABT	18.88		0.00
May 15, 2025	Cash Dividend 0.26 USD Apple Inc For 169.00 Shares Due on 05/15/25 With Ex Date 05/12/25, CUSIP 037833100, TICKER AAPL	43.94		0.00
May 16, 2025	Cash Dividend 1.3 USD Costco Wholesale Corp For 10.00 Shares Due on 05/16/25 With Ex Date 05/02/25, CUSIP 22160K105, TICKER COST	13.00		0.00
May 23, 2025	Cash Dividend 0.56 USD Citigroup Inc For 94.00 Shares Due on 05/23/25 With Ex Date 05/05/25, CUSIP 172967424, TICKER C	52.64		0.00
May 27, 2025	Cash Dividend 0.235 USD Walmart Inc For 177.00 Shares Due on 05/27/25 With Ex Date 05/09/25, CUSIP 931142103, TICKER WMT	41.60		0.00
Total Dividends		\$1,879.58	\$0.00	\$0.00
Total Corporate Actions/Income		\$1,879.58	\$0.00	\$0.00
Cash Sweep Activity				
May 31, 2025	Sweep sales totaling -1,038.18 units of Federated Hermes Government Obligations Fund for Main (Capital) (1 Transactions)	1,038.18		0.00

Your Transaction Detail (continued)

Trade Date	Transaction Description	Amount	Accrued Income	Realized G/L
xxxx4790 SCMHF Unrestricted Fund (Continued)				
Cash Sweep Activity (Continued)				
May 31, 2025	Sweep purchases totaling 1,879.58 units of Federated Hermes Government Obligations Fund for Main (Capital) (15 Transactions)	-1,879.58		0.00
Total Cash Sweep Activity		-\$841.40	\$0.00	\$0.00
Total xxxx4790 SCMHF Unrestricted Fund		\$0.00	\$0.00	\$0.00

Information

Positions on this statement are shown as of the trade date. Proceeds from the sale of securities and costs for the purchase of securities are not transacted through your account until the actual settlement date of the trade which may be up to three business days after the trade date or longer for certain securities with an extended settlement date. All cash activity will be shown as of the settlement date.

Privacy Statement

Federal law requires us to tell you how we collect, share, and protect your personal information. Our privacy policy has not changed and you may review our policy and practices with respect to your personal information at <https://www.firstinterstatebank.com/support/disclosures/privacy.html> or we will mail you a free copy upon request if you call us at 1-888-752-3332.

Information (continued)

This page intentionally left blank.