



Consolidated Summary of Accounts
December 2024

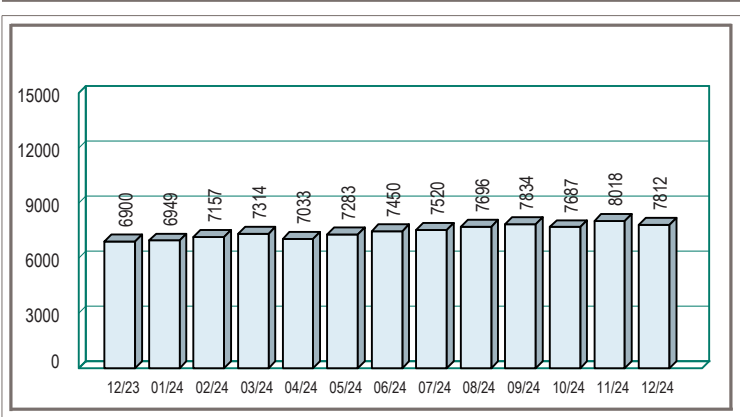
SHERIDAN COUNTY MEMORIAL
HOSPITAL FOUNDATION
LORRAINE S HUSMAN TRUST
ATTN: ADA KIRVEN
PO BOX 391
SHERIDAN WY 82801

STEAMBOAT INVESTMENT PARTNERS
2 N MAIN ST, SUITE 102
SHERIDAN, WY 82801
(800) 406-7333

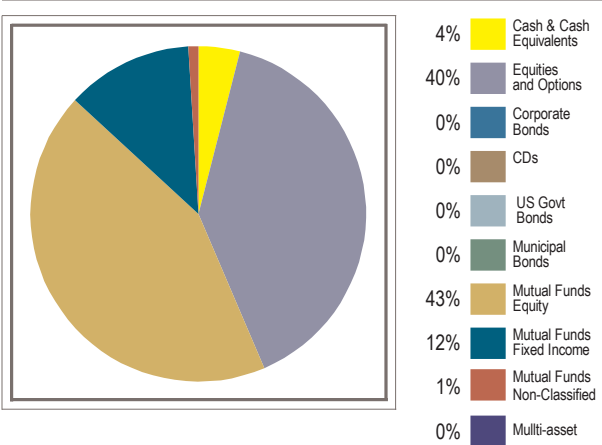
Income summary

	This Month (\$)	Year to date (\$)
Taxable dividends	45,877.13	173,999.46
Non-taxable dividends	-	-
Taxable interest	130.69	1,554.40
Non-taxable interest	-	-
Capital gain income	37,115.98	37,115.98
Limited partnership distributions	-	-
Other taxable income	-	-
Other non-taxable income	-	-
Total Income	83,123.80	212,669.84

Total Value Comparison (value in \$000's)



Portfolio Allocation



Analysis does not include annuities or assets not held by D.A. Davidson. Mutual fund allocation reflects the funds' dominant security type, money market, equity or fixed income. Short positions are included only to illustrate asset allocation.

Portfolio Summary

Account Title	Account Number	Cash & Cash Equivalents(\$)	Equities/ Options (\$)	Corporate Bonds (\$)	Certificates of Deposit (\$)	US Govt Bonds (\$)	Municipal Bonds (\$)	Mutual Funds (\$)	Other (\$)	Net Value (\$)	Monthly Deposits/ Withdrawals (\$)	YTD Deposits/ Withdrawals (\$)
SHERIDAN COUNTY MEMORIAL HOSPITAL FOUNDATION	83750357	42,664.54	2,588,322.00	-	-	-	-	3,640,196.68	-	6,271,183.22	-	(3,795.71)
SHERIDAN COUNTY MEMORIAL HOSPITAL FOUNDATION	71032980	6,025.56	301,398.64	-	-	-	-	626,791.41	-	934,215.61	-	3,738.34
SHERIDAN COUNTY MEMORIAL HOSPITAL FOUNDATION	22182625	3,839.85	196,819.57	-	-	-	-	405,512.82	-	606,172.24	-	(23,412.44)
SHERIDAN COUNTY MEMORIAL HOSPITAL FOUNDATION	81740764	0.53	-	-	-	-	-	-	-	0.53	(10,260.93)	(415.21)
December 2024 Totals		52,530.48	3,086,540.21	-	-	-	-	4,672,500.91	-	7,811,571.60	(10,260.93)	(23,885.02)
Previous Month's Totals		45,131.46	3,155,680.82	-	-	-	-	4,817,551.87	-	8,018,364.15	4,022.75	(13,624.09)
Previous Year End Totals		65,939.03	2,477,316.39	-	-	-	-	4,356,530.33	-	6,899,785.75	-	(535,389.31)

Account balance may not be available for accounts held outside the custody of D.A. Davidson. Values listed in the Other column include non-classified assets and annuities. These values are supplied as a service to you and were provided by an external source which we believe to be reliable but we cannot guarantee. Clients should consult the account statement provided directly by the external custodian for further information, including current account values. Any questions should be directed to the custodian's service team as indicated on the external account statement. Please see the Client Statement(s) accompanying this consolidated summary for additional important notices and disclosures.

PAGE INTENTIONALLY LEFT BLANK



D | A | DAVIDSON

Current period ending December 31, 2024

Account Name: SHERIDAN COUNTY MEMORIAL
HOSPITAL FOUNDATION
LORRAINE S HUSMAN TRUST
ATTN: ADA KIRVEN

Your Financial Professional:
STEAMBOAT INVESTMENT PARTNERS
2 N MAIN ST, SUITE 102
SHERIDAN, WY 82801

If you have more than one account with us, why not link them and receive summary information for your entire household? Contact your Financial Professional for more details.

SHERIDAN COUNTY MEMORIAL
HOSPITAL FOUNDATION
LORRAINE S HUSMAN TRUST
ATTN: ADA KIRVEN
PO BOX 391
SHERIDAN WY 82801

Obtain a copy of D.A. Davidson & Co.'s September 30, 2024, Statement of Financial Condition by visiting our website at dadavidson.com, by calling 1-800-332-5915, or by contacting your Financial Professional. D.A. Davidson & Co. is subject to the Uniform Net Capital Rule (15c3-1) pursuant to the Securities Exchange Act of 1934. Under the alternate method, the Company is required to maintain a net capital amount in excess of the greater of \$250,000 or 2% of aggregate debit balances as defined in the Formula for Reserve Requirements under SEC rule 15c3-3. At September 30, 2024, the Company's net capital of \$152,914,431 was 118.52% of aggregate debit items and net capital exceeded the required capital of \$2,580,463 by \$150,333,968.

Important information – please read

Your protection is our priority. Financial fraud is an ever-increasing risk in today's world. Financial services firms, including D.A. Davidson, have processes in place to help prevent fraudulent activities in areas such as wires, debit card transactions, and checks. Please be sure to carefully review your monthly statements and any other documents promptly, to detect any unauthorized or irregular activity.

Investment and insurance products are not FDIC insured, are not bank guaranteed and may lose value.



D | A | DAVIDSON

Corporate Office, D.A. Davidson & Co. member SIPC
Davidson Building · Great Falls, Montana 59401

(406) 727-4200 · Fax (406) 791-7315 · (800) 332-5915

www.dadavidson.com

About your statement - Statements are mailed monthly to clients who have transactions during the month that affect money balances and/or security positions. Statements are mailed quarterly to all other clients provided that the account contains a money or security balance. All positions, balances and activity are trade date based on this statement. Please review these statements carefully, and keep them for your records. If you note any discrepancies in your money balance, security positions, or activity in your account, please promptly report this to your Financial Professional or the Branch Office Manager for the branch where you maintain your account. To further protect your rights, including any rights under the Securities Investor Protection Act ("SIPA"), any verbal communications about inaccuracies or discrepancies in your account should be re-confirmed in writing. Your statement will be deemed correct unless we receive notice from you within 10 days of receipt. An explanation of your statement can be found on the D.A. Davidson website or upon request from your Financial Professional. If you have questions that are not adequately answered by these explanations, your Financial Professional will be happy to answer them for you.

Dadvantage available balance - Contact your Financial Professional for specific information regarding the Dadvantage program and eligibility.

Bank Insured Deposit Program (BIDP) - Funds held in banks are obligations of those banks and not of D.A. Davidson & Co. Funds held at the money market fund are obligations of the Fund Company and not of D.A. Davidson & Co. Funds held at banks in the BIDP are eligible for insurance to applicable limits by the Federal Deposit Insurance Corporation (FDIC) provided that any additional funds above such deposit limits will be deposited in an account at a designated money market fund. BIDP account funds swept to banks are not protected by Securities Investor Protection Corporation (SIPC). Excess funds swept to a money market fund are subject to SIPC protection. More information about D.A. Davidson's BIDP and applicable limits may be obtained at www.dadavidson.com/bidp. Questions about the BIDP or your balances and account activity in the BIDP should be directed to your Financial Professional.

Estimated annual income and current estimated yield - Estimated annual income (EAI) information presented in Holdings details, when available, reflects the estimated amount you would earn on a security if your current position and its related income remained constant for a year. Current Estimated Yield (EAY), when available, reflects the current estimated annual income divided by the current market value of the security as of the statement closing date. EAI and EAY contain certain types of securities that could include a return of principal capital gains, in which case the EAI and EAY would be overstated. In addition, bond calls, maturities, reclassification of dividends, capital gains and return of capital may overstate or understate EAI or EAY. EAI and EAY are estimates and the actual income and yield might be lower or higher than the estimated amounts. EAY reflects only the income generated by an investment and it does not reflect changes in the securities' price which may fluctuate. The information used to derive these estimates is obtained from third parties we consider reliable. Past performance is no guarantee of future results.

Research ratings - Ratings from Standard & Poor's and Moody's Financial Information Services may be displayed for certain securities listed on this statement. Ratings represent the opinions of the respective research providers, are subject to change, and should not be construed as representations or guarantees of performance. We obtained this information from third parties and therefore we cannot guarantee its accuracy. Please consult your Financial Professional for an interpretation of these ratings as they relate to your portfolio.

Security pricing - While sources used for pricing publicly traded securities are considered reliable, the prices displayed on our statement may be based on actual trades, bid/ask information or vendor evaluations. As such, the prices displayed on your statement may or may not reflect actual trade prices you would receive in the current market. Pricing for non-publicly traded securities is obtained from a variety of sources, which may include issuer-provided information. D.A. Davidson does not guarantee the accuracy, reliability, completeness or attainability of this information. Investment decisions should be made only after contacting your Financial Professional. Values on Fixed Income securities are based on estimates obtained from various sources. These values assume standard market conditions, are not firm bids or offers and may vary from prices achieved in actual transactions, especially for thinly traded securities. These values are generally for transactions of \$1 million or more, which often reflect more favorable pricing than transactions in smaller amounts. You may pay more than these values if you purchase smaller amounts of securities or receive less if you sell smaller amounts of securities. Securities pricing less than .001 will reflect a price per share of "0.00", but will display a total market value. Securities pricing at N/A indicate D.A. Davidson is unable to find a price for this security as of this statement date.

Revised 09/2021.

Summary of gains and losses - Gain and loss information is provided for information purposes only and should not be used for tax preparation. Gain or loss summary information may change due to basis adjustments. Information, if presented, includes only the securities for which we have original cost information. If you know the original cost of securities not purchased at D.A. Davidson, but included in your statement, please contact your Financial Professional.

Equity Dividend Reinvestment Program - By electing to reinvest equity dividend payments on eligible securities your shares will be purchased using the executed market price on payable date. For any fractional only position liquidations either the last market close price or the market open price on trade date will be used. This activity can be seen on your Account Statement.

Margin accounts - This is a combined statement of your Margin Account of a special memorandum account maintained for you under Section 4(F)(6) of Regulation T issued by the Board of Governors of the Federal Reserve System. The permanent record of the separate account as required by Regulation T is available for your inspection upon request. If you have sold securities which you do not own under the Short Sale rule, we have, in accordance with regulations, segregated the proceeds from such transactions into your Short Sale Account. Any market increases and/or decreases will be transferred to your Margin Account weekly. These entries will be identified as "Mark to the Market" postings in the "Activity Detail" section of your statement. The Daily closing price is used in determining any appreciation or depreciation of the securities sold short. The rate of interest charged to your Margin Account is determined by the cost of borrowing money and the amount of the debit balance. The rate will change without notice as the cost of borrowing money is increased or decreased. In computing interest, all Cash and Margin Accounts are netted, with the exception of the Short Account and Dividend & Interest credits that are pending disbursement, so that the charge is made on the net daily balance.

Davidson SmartCreditSM borrowing power - Borrowing power is estimated as fifty percent of marginable securities in your investment account. Please contact your Financial Professional for applicable interest rates and loan eligibility.

Option Clients - Information with respect to commissions and other charges related to the execution of listed option transactions has been included in the confirmations of such transactions previously furnished by D.A. Davidson & Co. A summary of this information will be promptly furnished upon your request.

Municipal Securities - Continuing disclosure information regarding municipal securities is available at the Municipal Securities Rule Making Board's EMMA website at www.emma.msrb.org.

Other information - If you have elected to receive interest on Free Credit Balances reflected as "cash" in your account, please be advised that under federal securities laws, the firm is permitted to pay such interest only on balances arising as an incidence of securities trading activities. Customer Free Credit Balances may be used in this firm's business subject to the limitations of 17 CFR Section 240.15c3.3 under the Securities Exchange Act of 1934. You have the right to demand and receive from us in the course of normal business operations the delivery of: a) Any Free Credit Balances to which you are entitled. b) Any Fully-Paid Securities to which you are entitled. c) Any securities purchased on margin upon full payment of any indebtedness to us. If you participate in one of our Money Market Funds or Bank Insured Deposit Program, collected money balances from the Securities Accounts are transferred daily to begin earning dividends or interest as soon as possible. You may also make direct deposits and write checks with these accounts. You have the right at any time to demand the liquidation of any Money Market Fund or Bank Insured Deposit Program and have the monies held as a free credit balance of cash within your account.

All securities held by D.A. Davidson & Co. for you, but which are not registered in your name, are commingled with identical securities being held for other clients. In the event any securities so held are "called" by the issuer, we will determine the beneficial ownership thereof by an impartial random selection system as required by Exchange rules.

Assets not held at D.A. Davidson & Co. may not be covered by the Securities Investor Protection Corporation (SIPC). They are reflected on this statement solely as a service to the customer.

A financial statement of this firm is available for your personal inspection at our office or a copy of it will be mailed upon your written request.

When disbursing funds to our clients, it is our policy to issue all payments on the bank of our choice, unless the client requests otherwise.

"Senior Vice President," "Vice President," and "Associate Vice President" are honorary titles given to certain Financial Professionals of D.A. Davidson & Co. in recognition of their experience in the securities industry and their commitment to customer service.



D | A | DAVIDSON

December 1 - December 31, 2024

SHERIDAN COUNTY MEMORIAL
HOSPITAL FOUNDATION
BISHOP ENDOWMENT
ATTN: ADA KIRVEN
PO BOX 391
SHERIDAN WY 82801

Advisory Information:
PARAGON
STEAMBOAT INVESTMENT
PARTNERS

Account Number: 22182625

Prestige Status: Prestige Elite

STEAMBOAT INVESTMENT PARTNERS
2 N MAIN ST, SUITE 102
SHERIDAN, WY 82801
(800) 406-7333

Value of your account

	Current Period (\$)	Current Year to date (\$)
Total beginning account value	618,444.12	565,696.70
Change in the value of your account	(12,271.88)	40,475.54
Closing account value as of 12/31/2024	606,172.24	606,172.24

Account values include all assets and outstanding margin and/or loan balances.
Please see important disclosures under the section titled "Bank Insured Deposit Program" in this statement.

Your investment objectives and risk tolerance

Investment objective	Growth & Income
Risk tolerance	Moderate

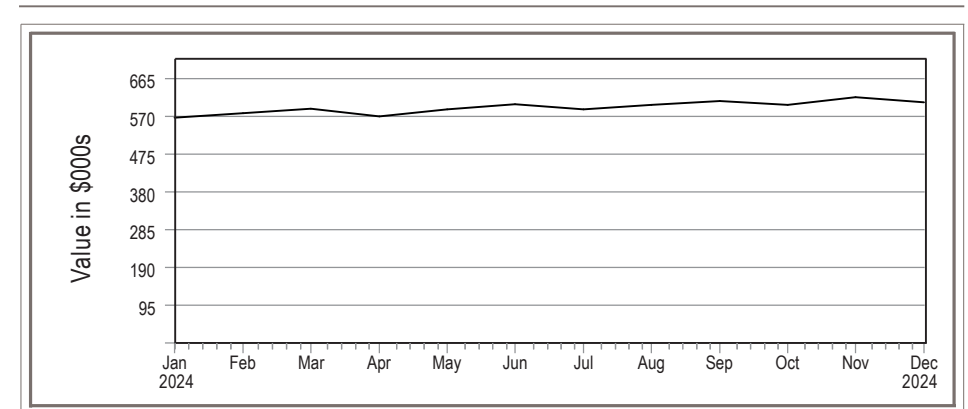
If the information in this section needs to be updated, contact your Financial Professional.

Davidson SmartCreditSM borrowing power and loan balance

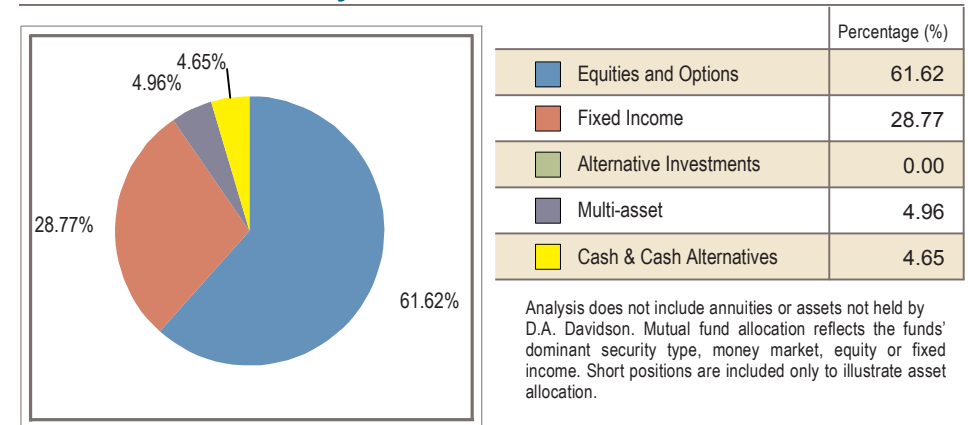
	Available Funds (\$)
Davidson SmartCredit SM	—
Loan balance	—

Contact your Financial Professional about the Davidson SmartCreditSM margin loan program. For more details, please see the Disclosure and Information page.

Value over time



Asset allocation analysis



Activity summary

	Current Period (\$)	Year to date (\$)
Deposits, security transfers received	—	—
Income received	6,833.49	20,506.58
Other funds credited	—	—
Sales	63,903.50	108,364.08
Checks and bill payments	—	—
Interest charges	—	—
Withdrawals, security transfers delivered	—	(23,412.44)
Foreign and/or federal tax withheld	—	—
Purchases	(70,794.94)	(103,920.25)
Expenses	—	(2,958.51)

For detailed information on activity occurring within this account see the Activity Details.

For detailed information about our brokerage and investment advisory services and the products we recommend, please visit www.dadavidson.com/disclosures where you will find our Form CRS - Client Relationship Summary, Regulation Best Interest Disclosures and various Product and Services Disclosures.

Income summary

	Current Period (\$)	Year to date (\$)
Taxable dividends	4,028.09	17,618.39
Non-taxable dividends	—	—
Taxable interest	10.35	93.14
Non-taxable interest	—	—
Capital gain income	2,795.05	2,795.05
Limited partnership distributions	—	—
Other taxable income	—	—
Other non-taxable income	—	—
Total Income	6,833.49	20,506.58
Taxable accrued income	—	—
Non-taxable accrued income	—	—

Taxable or non-taxable designation is determined at the security level, not at the account level. For detailed information on income received see the Activity Details.

Accrued income for purchases or sales is separately noted in the income summary and is included in the purchases and sales totals in the Activity summary. For details on the accrued income, please see the trade confirmation.

Holdings summary

	on November 30 (\$)	on December 31 (\$)
Cash and cash equivalents	3,897.80	3,839.85
Equities/options	191,658.90	196,819.57
Corporate bonds	—	—
Municipal bonds	—	—
Certificates of deposit	—	—
US Government bonds	—	—
Mutual funds	422,887.42	405,512.82
Non-Classified & annuities	—	—
Total assets	618,444.12	606,172.24

Cash & cash equivalent information

	Available Funds (\$)	Rate (%)
Cash Equivalent Funds/Money Market	—	—
Bank Insured Deposit Program	3,762.43	1.90
Cash	77.42	—
Total cash and cash equivalents	3,839.85	—

For details on this section see Disclosures.

DADVANTAGE

	Available Funds (\$)
Available for checkwriting and debit card transactions	—

Available balance may not accurately reflect recent deposits or withdrawals. Please see your Financial Professional for your most accurate available funds. For more details, please see the Disclosure and Additional Information section. Not all checkwriting programs are included in this section.

Gain/loss summary

	Realized gains and losses		Unrealized gains and losses
	on December 31 (\$)	Year to date (\$)	
Short term	(470.93)	2,293.87	(726.44)
Long term	5,801.59	20,638.29	84,070.92
Total	5,330.66	22,932.16	83,344.48

Holdings details

This section reflects the impact of positions purchased/sold on a trade date basis, and will include positions purchased and omit positions sold in the current month. Please see the Pending Trades section for more information. The "Market Value" and "Unrealized Gain/(Loss)" figures shown are representative values as of the last business day of the statement period indicated, which may not reflect the value that could actually be obtained in the market. For more details on pricing, cost basis, estimated annual income and current estimated yield see the disclosures section of the statement.

New Treasury regulations require that we report on Form 1099-B, after the close of the tax year, your adjusted cost basis and classify the gain or loss as either long-term or short-term on the sale of covered securities acquired on or after January 1, 2011. These regulations also require that we make basis adjustments due to wash sales, certain corporate actions and transfer by gift or inheritance, which will be reflected on your form 1099-B. Cost basis is reflected on monthly statements for informational purposes only and should not be used in the preparation of your income tax returns. Cost information is presented as a general guide to portfolio performance. Please refer to the disclosures section of this statement for additional information. An "M" in the purchase date indicates a position is made up of multiple trades/tax lots.

Quantity	Holding Description	Security Identifier Ratings	Purchase Date	Cost Basis (\$)	Total Cost Basis (\$)	Market Value (\$)	Total Market Value (\$)	Gain/Loss (\$)	Est. Annual Income (\$)	Current Yield (%)
	Equities / options									
8.0000	ACCENTURE PLC IRELAND CL A	ACN	M	233.146	1,865.17	351.790	2,814.32	949.15	47.36	1.68
14.0000	ADOBE INC	ADBE	M	447.332	6,262.65	444.680	6,225.52	(37.13)	—	—
34.0000	ALPHABET INC CL C	GOOG	M	85.905	2,920.79	190.440	6,474.96	3,554.17	27.20	0.42
40.0000	AMAZON.COM INC	AMZN	M	111.310	4,452.39	219.390	8,775.60	4,323.21	—	—
54.0000	APPLE INC	AAPL	M	138.149	7,460.04	250.420	13,522.68	6,062.64	54.00	0.40
23.0000	AUTOMATIC DATA PROCESSING INC	ADP	M	171.145	3,936.33	292.730	6,732.79	2,796.46	141.68	2.10
58.0000	BROADCOM INC	AVGO	11/7/22	47.624	2,762.20	231.840	13,446.72	10,684.52	122.96	0.91
23.0000	CHUBB LTD	CB	M	131.929	3,034.37	276.300	6,354.90	3,320.53	83.72	1.32
11.0000	COSTCO WHOLESALE CORP	COST	M	387.172	4,258.89	916.270	10,078.97	5,820.08	51.04	0.51
17.0000	CROWDSTRIKE HOLDINGS INC CL A	CRWD	M	320.669	5,451.38	342.160	5,816.72	365.34	—	—
84.0000	CSX CORP	CSX	3/14/24	36.869	3,097.00	32.270	2,710.68	(386.32)	40.32	1.49
10.0000	CUMMINS INC	CMI	9/10/21	235.092	2,350.92	348.600	3,486.00	1,135.08	72.80	2.09
23.0000	EOG RESOURCES INC	EOG	3/14/24	122.687	2,821.81	122.580	2,819.34	(2.47)	89.70	3.18
18.0000	JACK HENRY & ASSOCIATES INC	JKHY	3/14/24	171.655	3,089.80	175.300	3,155.40	65.60	39.60	1.25
42.0000	JOHNSON & JOHNSON	JNJ	M	144.441	6,066.53	144.620	6,074.04	7.51	208.32	3.43
29.0000	JPMORGAN CHASE & CO	JPM	M	126.643	3,672.65	239.710	6,951.59	3,278.94	145.00	2.08
10.0000	MCDONALDS CORP	MCD	12/11/23	287.760	2,877.60	289.890	2,898.90	21.30	70.80	2.44
27.0000	MICROSOFT CORP	MSFT	M	219.238	5,919.43	421.500	11,380.50	5,461.07	89.64	0.79
3.0000	NETFLIX INC	NFLX	4/28/22	193.900	581.70	891.320	2,673.96	2,092.26	—	—

Holdings details (continued)

Quantity	Holding Description	Security Identifier Ratings	Purchase Date	Cost Basis (\$)	Total Cost Basis (\$)	Market Value (\$)	Total Market Value (\$)	Gain/Loss (\$)	Est. Annual Income (\$)	Current Yield (%)
	Equities / options (continued)									
74.0000	NVIDIA CORP	NVDA	12/11/23	46.796	3,462.90	134.290	9,937.46	6,474.56	2.96	0.03
57.0000	PROLOGIS INC	PLD	M	141.356	8,057.30	105.700	6,024.90	(2,032.40)	218.88	3.63
114.0000	REALTY INCOME CORP	O	M	63.579	7,248.03	53.410	6,088.74	(1,159.29)	360.46	5.92
12.0000	S&P GLOBAL INC	SPGI	M	346.452	4,157.42	498.030	5,976.36	1,818.94	43.68	0.73
6.0000	SERVICENOW INC	NOW	12/11/23	705.168	4,231.01	1,060.120	6,360.72	2,129.71	—	—
38.0000	STARBUCKS CORP	SBUX	M	80.519	3,059.71	91.250	3,467.50	407.79	92.72	2.67
19.0000	STRYKER CORP	SYK	M	203.053	3,858.00	360.050	6,840.95	2,982.95	63.84	0.93
99.0000	UBER TECHNOLOGIES INC	UBER	12/26/24	61.618	6,100.15	60.320	5,971.68	(128.47)	—	—
40.0000	UNITED PARCEL SERVICE INC CL B	UPS	M	121.068	4,842.72	126.100	5,044.00	201.28	260.80	5.17
76.0000	VALERO ENERGY CORP	VLO	M	77.841	5,915.90	122.590	9,316.84	3,400.94	325.28	3.49
22.0000	VISA INC CL A	V	M	220.950	4,860.90	316.040	6,952.88	2,091.98	51.92	0.75
15.0000	ZOETIS INC CL A	ZTS	M	137.561	2,063.42	162.930	2,443.95	380.53	25.92	1.06
	Subtotal - Equities / options				130,739.11		196,819.57	66,080.46	2,730.60	

Quantity	Holding Description	Security Identifier Ratings	Purchase Date	Cost Basis (\$)	Total Cost Basis (\$)	Market Value (\$)	Total Market Value (\$)	Gain/Loss (\$)	Gain/Loss (\$) Client Investment	Est. Annual Income (\$)	Current Yield (%)
	Mutual Funds										
	ABRDN BLOOMBERG ALL COMMODITY STRATEGY K-1 FREE ETF	BCI									
1,146.0000	Client investment		M	22.858	26,195.35	19.750	22,633.50	(3,561.85)	(3,561.85)	745.70	3.29
	CAPITAL GROUP FIXED INCOME U S MULTI SECTOR INCOME ETF	CGMS									
560.0000	Client investment		12/26/24	27.186	15,224.36	27.280	15,276.80	52.44	52.44	902.55	5.91
	CAPITAL GROUP CORE BOND ETF	CGCB									
711.0000	Client investment		12/26/24	25.684	18,261.35	25.790	18,336.69	75.34	75.34	731.26	3.99

Holdings details (continued)

Quantity	Holding Description	Security Identifier Ratings	Purchase Date	Cost Basis (\$)	Total Cost Basis (\$)	Market Value (\$)	Total Market Value (\$)	Gain/Loss (\$)	Gain/Loss (\$) Client Investment	Est. Annual Income (\$)	Current Yield (%)
	Mutual Funds (continued)										
	ISHARES CORE MSCI EMERGING MARKETS ETF	IEMG									
169.0000	Client investment		M	44.035	7,441.93	52.220	8,825.18	1,383.25	1,383.25	251.30	2.85
	PACER TRENDPILOT US LARGE CAP ETF	PTLC									
331.0000	Client investment		12/26/24	55.250	18,287.62	53.440	17,688.64	(598.98)	(598.98)	168.94	0.95
	VANGUARD S&P MID CAP 400 INDEX ETF	IVOO									
88.0000	Client investment		M	64.689	5,692.61	105.500	9,284.00	3,591.39	3,591.39	123.81	1.33
	VANGUARD FTSE ALL WORLD EX US ETF	VEU									
298.0000	Client investment		M	43.829	13,061.02	57.410	17,108.18	4,047.16	4,047.16	525.67	3.07
	VANGUARD RUSSELL 2000 INDEX FD ETF SHARES	VTWO									
171.0000	Client investment		M	67.103	11,474.63	89.330	15,275.43	3,800.80	3,800.80	196.99	1.29
	VANGUARD S&P 500 INDEX ETF	VOO									
44.0000	Client investment		M	419.727	18,467.98	538.810	23,707.64	5,239.66	5,239.66	297.70	1.25
	VANGUARD REAL ESTATE INDEX ETF	VNQ									
325.0000	Client investment		M	85.317	27,728.16	89.080	28,951.00	1,222.84	1,222.84	1,184.95	4.09
	CAPITAL INCOME BUILDER CL F2	CAIFX									
137.5660	Client investment		M	60.805	8,364.74	68.880	9,475.55	1,110.81	1,110.81	—	—
43.1640	Total reinvested		M	64.146	2,768.81	68.880	2,973.13	204.31	2,973.13		
180.7300	Total quantity				11,133.55		12,448.68	1,315.12	4,083.94	436.73	3.51
	FPA NEW INCOME INSTL CL	FPNIX									
3,655.3110	Client investment		M	9.843	35,980.52	9.770	35,712.40	(268.13)	(268.12)	—	—
561.1920	Total reinvested		M	9.725	5,457.85	9.770	5,482.83	24.95	5,482.83		
4,216.5030	Total quantity				41,438.37		41,195.23	(243.18)	5,214.71	1,694.19	4.11

Holdings details (continued)

Quantity	Holding Description	Security Identifier Ratings	Purchase Date	Cost Basis (\$)	Total Cost Basis (\$)	Market Value (\$)	Total Market Value (\$)	Gain/Loss (\$)	Gain/Loss (\$) Client Investment	Est. Annual Income (\$)	Current Yield (%)
	Mutual Funds (continued)										
	INTERNATIONAL GROWTH & INCOME CL F2	IGFFX									
253.8070	Client investment		M	31.899	8,096.09	35.870	9,104.05	1,007.96	1,007.96	—	—
70.6240	Total reinvested		M	35.140	2,481.70	35.870	2,533.28	51.59	2,533.28		
324.4310	Total quantity				10,577.79		11,637.33	1,059.55	3,541.24	327.96	2.82
	JPMORGAN CORE PLUS BOND CL I	HLIPX									
4,824.3750	Client investment		M	8.526	41,133.95	7.110	34,301.30	(6,832.65)	(6,832.65)	—	—
856.4320	Total reinvested		M	7.543	6,460.08	7.110	6,089.23	(370.88)	6,089.23		
5,680.8070	Total quantity				47,594.03		40,390.53	(7,203.53)	(743.42)	1,958.17	4.85
	JPMORGAN MID CAP GROWTH CL I	HLGEX									
123.8380	Client investment		M	37.240	4,611.71	49.850	6,173.32	1,561.61	1,561.61	—	—
9.7480	Total reinvested		M	51.311	500.18	49.850	485.94	(14.24)	485.94		
133.5860	Total quantity				5,111.89		6,659.26	1,547.37	2,047.55	—	—
	MFS INTL GROWTH CL I	MQGIX									
258.4840	Client investment		M	38.132	9,856.46	47.260	12,215.94	2,359.49	2,359.48	—	—
58.2460	Total reinvested		M	46.274	2,695.29	47.260	2,752.71	57.43	2,752.71		
316.7300	Total quantity				12,551.75		14,968.65	2,416.92	5,112.19	178.66	1.19
	T ROWE PRICE CAP APPREC INSTL CL	TRAIX									
450.8660	Client investment		M	27.874	12,567.27	34.610	15,604.47	3,037.20	3,037.20	—	—
57.7140	Total reinvested		M	32.863	1,896.64	34.610	1,997.48	100.83	1,997.48		
508.5800	Total quantity				14,463.91		17,601.95	3,138.03	5,034.68	385.45	2.19

Holdings details (continued)

Quantity	Holding Description	Security Identifier Ratings	Purchase Date	Cost Basis (\$)	Total Cost Basis (\$)	Market Value (\$)	Total Market Value (\$)	Gain/Loss (\$)	Gain/Loss (\$) Client Investment	Est. Annual Income (\$)	Current Yield (%)
	Mutual Funds (continued)										
	VANGUARD FEDERAL MONEY MARKET INVESTOR CL	VMFXX									
19,786.0000	Client investment		M	1.000	19,786.00	1.000	19,786.00	—	—	—	—
4,561.9700	Total reinvested		M	1.000	4,561.97	1.000	4,561.97	—	4,561.97		
24,347.9700	Total quantity				24,347.97		24,347.97	—	4,561.97	1,110.26	4.56
	VIRTUS NEWFLEET MULTI SECTOR SHORT TERM BOND CL I	PIMSX									
11,109.8780	Client investment		M	4.532	50,347.74	4.530	50,327.75	(19.99)	(19.99)	—	—
1,953.2920	Total reinvested		M	4.529	8,846.75	4.530	8,848.41	1.68	8,848.41		
13,063.1700	Total quantity				59,194.49		59,176.16	(18.31)	8,828.42	2,935.29	4.96
	Subtotal - Mutual Funds				388,248.76		405,512.82	17,264.02	52,933.33	14,155.58	

Included in "Client Investment" are initial purchases and shares not obtained at D.A. Davidson or shares received as a transfer. "Total reinvested" is the total of all dividends and capital gains reinvested. Gain/Loss Client Investment represents a full gain or loss on the total reinvested shares.

	Total Cost Basis (\$)	Total Market Value (\$)	Gain/Loss (\$)	Estimated Annual Income (\$)
Total security value				
	518,987.87	602,332.39	83,344.48	16,886.18

Activity details

Date	Activity	Quantity	Price (\$)	Description	Total (\$)	Cash (\$)	Margin (\$)	Money Market (\$)	Bank Insured Deposit (\$)
	Opening Balance				3,897.80	23.18	—	—	3,874.62
12/2/24	DIVIDEND		0.0000	VANGUARD FEDERAL MONEY MARKET INVESTOR CL 112924 36,955.48000 (922906300)	140.49	140.49	—	—	—
12/2/24	REINVEST DIV	140.49	0.0000	VANGUARD FEDERAL MONEY MARKET INVESTOR CL REINVEST AT 1.000 (922906300)	(140.49)	(140.49)	—	—	—

Activity details (continued)

Date	Activity	Quantity	Price (\$)	Description	Total (\$)	Cash (\$)	Margin (\$)	Money Market (\$)	Bank Insured Deposit (\$)
12/2/24	DIVIDEND		0.0000	VIRTUS NEWFLEET MULTI SECTOR SHORT TERM BOND CL I 112924 13,007.27400 (92828R610)	253.77	253.77	—	—	—
12/2/24	REINVEST DIV	55.896	0.0000	VIRTUS NEWFLEET MULTI SECTOR SHORT TERM BOND CL I REINVEST AT 4.540 (92828R610)	(253.77)	(253.77)	—	—	—
12/2/24	DIVIDEND		0.0000	VISA INC CL A 120224 22 (92826C839)	12.98	12.98	—	—	—
12/2/24	Cash Sweep Out		1.0000	BANK INSD DEPOSIT ACCT FDIC INSURED	—	(23.18)	—	—	—
12/2/24	BIDP Sweep In		1.0000	BANK INSD DEPOSIT ACCT FDIC INSURED	—	—	—	—	23.18
12/3/24	DIVIDEND		0.0000	ZOETIS INC CL A 120324 15 (98978V103)	6.48	6.48	—	—	—
12/3/24	Cash Sweep Out		1.0000	BANK INSD DEPOSIT ACCT FDIC INSURED	—	(12.98)	—	—	—
12/3/24	BIDP Sweep In		1.0000	BANK INSD DEPOSIT ACCT FDIC INSURED	—	—	—	—	12.98
12/4/24	DIVIDEND		0.0000	VANGUARD LONG TERM TREASURY ETF 120424 618 (92206C847)	134.79	134.79	—	—	—
12/4/24	Cash Sweep Out		1.0000	BANK INSD DEPOSIT ACCT FDIC INSURED	—	(6.48)	—	—	—
12/4/24	BIDP Sweep In		1.0000	BANK INSD DEPOSIT ACCT FDIC INSURED	—	—	—	—	6.48
12/5/24	DIVIDEND		0.0000	CUMMINS INC 120524 10 (231021106)	18.20	18.20	—	—	—
12/5/24	DIVIDEND		0.0000	UNITED PARCEL SERVICE INC CL B 120524 40 (911312106)	65.20	65.20	—	—	—
12/5/24	Cash Sweep Out		1.0000	BANK INSD DEPOSIT ACCT FDIC INSURED	—	(134.79)	—	—	—
12/5/24	BIDP Sweep In		1.0000	BANK INSD DEPOSIT ACCT FDIC INSURED	—	—	—	—	134.79

Activity details (continued)

Date	Activity	Quantity	Price (\$)	Description	Total (\$)	Cash (\$)	Margin (\$)	Money Market (\$)	Bank Insured Deposit (\$)
12/6/24	Cash Sweep Out		1.0000	BANK INSD DEPOSIT ACCT FDIC INSURED	—	(83.40)	—	—	—
12/6/24	BIDP Sweep In		1.0000	BANK INSD DEPOSIT ACCT FDIC INSURED	—	—	—	—	83.40
12/10/24	DIVIDEND		0.0000	JOHNSON & JOHNSON 121024 32 (478160104)	39.68	39.68	—	—	—
12/11/24	DIVIDEND		0.0000	S&P GLOBAL INC 121124 12 (78409V104)	10.92	10.92	—	—	—
12/11/24	Cash Sweep Out		1.0000	BANK INSD DEPOSIT ACCT FDIC INSURED	—	(39.68)	—	—	—
12/11/24	BIDP Sweep In		1.0000	BANK INSD DEPOSIT ACCT FDIC INSURED	—	—	—	—	39.68
12/12/24	DIVIDEND		0.0000	MICROSOFT CORP 121224 27 (594918104)	22.41	22.41	—	—	—
12/12/24	Cash Sweep Out		1.0000	BANK INSD DEPOSIT ACCT FDIC INSURED	—	(10.92)	—	—	—
12/12/24	BIDP Sweep In		1.0000	BANK INSD DEPOSIT ACCT FDIC INSURED	—	—	—	—	10.92
12/13/24	DIVIDEND		0.0000	CSX CORP 121324 84 (126408103)	10.08	10.08	—	—	—
12/13/24	CAPITAL GAIN		0.0000	JPMORGAN MID CAP GROWTH CL I 121324 124.91200 (4812C1710)	457.55	457.55	—	—	—
12/13/24	REINVEST CAP	8.674	0.0000	JPMORGAN MID CAP GROWTH CL I REINVEST AT 52.750 (4812C1710)	(457.55)	(457.55)	—	—	—
12/13/24	DIVIDEND		0.0000	REALTY INCOME CORP 121324 91 (756109104)	23.98	23.98	—	—	—
12/13/24	INTEREST		0.0000	BANK INSD DEPOSIT ACCT FDIC INSURED 121324 4,214	6.24	—	—	—	6.24
12/13/24	Cash Sweep Out		1.0000	BANK INSD DEPOSIT ACCT FDIC INSURED	—	(22.41)	—	—	—

Activity details (continued)

Date	Activity	Quantity	Price (\$)	Description	Total (\$)	Cash (\$)	Margin (\$)	Money Market (\$)	Bank Insured Deposit (\$)
12/13/24	BIDP Sweep In		1.0000	BANK INSD DEPOSIT ACCT FDIC INSURED	—	—	—	—	22.41
12/16/24	DIVIDEND		0.0000	ALPHABET INC CL C 121624 34 (02079K107)	6.80	6.80	—	—	—
12/16/24	DIVIDEND		0.0000	MCDONALDS CORP 121624 10 (580135101)	17.70	17.70	—	—	—
12/16/24	Cash Sweep Out		1.0000	BANK INSD DEPOSIT ACCT FDIC INSURED	—	(34.06)	—	—	—
12/16/24	BIDP Sweep In		1.0000	BANK INSD DEPOSIT ACCT FDIC INSURED	—	—	—	—	34.06
12/17/24	DIVIDEND		0.0000	UNITEDHEALTH GROUP INC 121724 5 (91324P102)	10.50	10.50	—	—	—
12/17/24	Cash Sweep Out		1.0000	BANK INSD DEPOSIT ACCT FDIC INSURED	—	(24.50)	—	—	—
12/17/24	BIDP Sweep In		1.0000	BANK INSD DEPOSIT ACCT FDIC INSURED	—	—	—	—	24.50
12/18/24	ST CAP GAINS		0.0000	MFS INTL GROWTH CL I 121824 300.81500 (55273E848)	7.11	7.11	—	—	—
12/18/24	CAPITAL GAIN		0.0000	MFS INTL GROWTH CL I 121824 300.81500 (55273E848)	572.12	572.12	—	—	—
12/18/24	DIVIDEND		0.0000	MFS INTL GROWTH CL I 121824 300.81500 (55273E848)	193.60	193.60	—	—	—
12/18/24	REINVEST CAP	11.782	0.0000	MFS INTL GROWTH CL I REINVEST AT 48.560 (55273E848)	(572.12)	(572.12)	—	—	—
12/18/24	REINVEST DIV	3.987	0.0000	MFS INTL GROWTH CL I REINVEST AT 48.560 (55273E848)	(193.60)	(193.60)	—	—	—
12/18/24	REINVEST CAP	0.146	0.0000	MFS INTL GROWTH CL I REINVEST AT 48.560 (55273E848)	(7.11)	(7.11)	—	—	—

Activity details (continued)

Date	Activity	Quantity	Price (\$)	Description	Total (\$)	Cash (\$)	Margin (\$)	Money Market (\$)	Bank Insured Deposit (\$)
12/18/24	Cash Sweep Out		1.0000	BANK INSD DEPOSIT ACCT FDIC INSURED	—	(10.50)	—	—	—
12/18/24	BIDP Sweep In		1.0000	BANK INSD DEPOSIT ACCT FDIC INSURED	—	—	—	—	10.50
12/19/24	DIVIDEND		0.0000	T ROWE PRICE CAP APPREC INSTL CL 121924 496.33900 (77954M303)	423.53	423.53	—	—	—
12/19/24	ST CAP GAINS		0.0000	T ROWE PRICE CAP APPREC INSTL CL 121924 496.33900 (77954M303)	224.15	224.15	—	—	—
12/19/24	CAPITAL GAIN		0.0000	T ROWE PRICE CAP APPREC INSTL CL 121924 496.33900 (77954M303)	1,159.30	1,159.30	—	—	—
12/19/24	REINVEST DIV	12.241	0.0000	T ROWE PRICE CAP APPREC INSTL CL REINVEST AT 34.600 (77954M303)	(423.53)	(423.53)	—	—	—
12/20/24	DIVIDEND		0.0000	ABRDN BLOOMBERG ALL COMMODITY STRATEGY K-1 FREE ETF 122024 1,146 (003261104)	745.68	745.68	—	—	—
12/20/24	CAPITAL GAIN		0.0000	CAPITAL INCOME BUILDER CL F2 122024 173.93800 (140194101)	288.60	288.60	—	—	—
12/20/24	DIVIDEND		0.0000	CAPITAL INCOME BUILDER CL F2 122024 173.93800 (140194101)	174.27	174.27	—	—	—
12/20/24	REINVEST CAP	4.235	0.0000	CAPITAL INCOME BUILDER CL F2 REINVEST AT 68.150 (140194101)	(288.60)	(288.60)	—	—	—

Activity details (continued)

Date	Activity	Quantity	Price (\$)	Description	Total (\$)	Cash (\$)	Margin (\$)	Money Market (\$)	Bank Insured Deposit (\$)
12/20/24	REINVEST DIV	2.557	0.0000	CAPITAL INCOME BUILDER CL F2 REINVEST AT 68.150 (140194101)	(174.27)	(174.27)	—	—	—
12/20/24	DIVIDEND		0.0000	FPA NEW INCOME INSTL CL 121924 4,189.20700 (30254T643)	266.14	266.14	—	—	—
12/20/24	REINVEST DIV	27.296	0.0000	FPA NEW INCOME INSTL CL REINVEST AT 9.750 (30254T643)	(266.14)	(266.14)	—	—	—
12/20/24	DIVIDEND		0.0000	ISHARES CORE MSCI EMERGING MARKETS ETF 122024 169 (46434G103)	196.47	196.47	—	—	—
12/20/24	DIVIDEND		0.0000	VALERO ENERGY CORP 122024 61 (91913Y100)	65.27	65.27	—	—	—
12/20/24	Cash Sweep Out		1.0000	BANK INSD DEPOSIT ACCT FDIC INSURED	—	(1,383.45)	—	—	—
12/20/24	BIDP Sweep In		1.0000	BANK INSD DEPOSIT ACCT FDIC INSURED	—	—	—	—	1,383.45
12/23/24	DIVIDEND		0.0000	JACK HENRY & ASSOCIATES INC 122324 18 (426281101)	9.90	9.90	—	—	—
12/23/24	CAPITAL GAIN		0.0000	INTERNATIONAL GROWTH & INCOME CL F2 122324 320.52000 (45956T501)	86.22	86.22	—	—	—
12/23/24	DIVIDEND		0.0000	INTERNATIONAL GROWTH & INCOME CL F2 122324 320.52000 (45956T501)	54.10	54.10	—	—	—
12/23/24	REINVEST CAP	2.403	0.0000	INTERNATIONAL GROWTH & INCOME CL F2 REINVEST AT 35.880 (45956T501)	(86.22)	(86.22)	—	—	—

Activity details (continued)

Date	Activity	Quantity	Price (\$)	Description	Total (\$)	Cash (\$)	Margin (\$)	Money Market (\$)	Bank Insured Deposit (\$)
12/23/24	REINVEST DIV	1.508	0.0000	INTERNATIONAL GROWTH & INCOME CL F2 REINVEST AT 35.880 (45956T501)	(54.10)	(54.10)	—	—	—
12/23/24	Cash Sweep Out		1.0000	BANK INSD DEPOSIT ACCT FDIC INSURED	—	(1,007.42)	—	—	—
12/23/24	BIDP Sweep In		1.0000	BANK INSD DEPOSIT ACCT FDIC INSURED	—	—	—	—	1,007.42
12/24/24	DIVIDEND		0.0000	VANGUARD FTSE ALL WORLD EX US ETF 122424 298 (922042775)	280.21	280.21	—	—	—
12/24/24	Cash Sweep Out		1.0000	BANK INSD DEPOSIT ACCT FDIC INSURED	—	(9.90)	—	—	—
12/24/24	BIDP Sweep In		1.0000	BANK INSD DEPOSIT ACCT FDIC INSURED	—	—	—	—	9.90
12/26/24	PURCHASE	5	451.2648	ADOBE INC (00724F101)	(2,256.32)	(2,256.32)	—	—	—
12/26/24	SALE	(9)	227.4317	AMAZON.COM INC (023135106)	2,046.83	2,046.83	—	—	—
12/26/24	PURCHASE	711	25.6840	CAPITAL GROUP CORE BOND ETF (14020Y508)	(18,261.35)	(18,261.35)	—	—	—
12/26/24	PURCHASE	560	27.1863	CAPITAL GROUP FIXED INCOME U S MULTI SECTOR INCOME ETF (14020Y300)	(15,224.36)	(15,224.36)	—	—	—
12/26/24	PURCHASE	5	364.5050	CROWDSTRIKE HOLDINGS INC CL A (22788C105)	(1,822.53)	(1,822.53)	—	—	—
12/26/24	PURCHASE	10	146.0923	JOHNSON & JOHNSON (478160104)	(1,460.92)	(1,460.92)	—	—	—
12/26/24	SALE	(2)	919.2001	NETFLIX INC (64110L106)	1,838.35	1,838.35	—	—	—
12/26/24	PURCHASE	331	55.2496	PACER TRENDPILOT US LARGE CAP ETF (69374H105)	(18,287.62)	(18,287.62)	—	—	—
12/26/24	PURCHASE	12	106.7654	PROLOGIS INC (74340W103)	(1,281.18)	(1,281.18)	—	—	—

Activity details (continued)

Date	Activity	Quantity	Price (\$)	Description	Total (\$)	Cash (\$)	Margin (\$)	Money Market (\$)	Bank Insured Deposit (\$)
12/26/24	PURCHASE	23	53.2090	REALTY INCOME CORP (756109104)	(1,223.81)	(1,223.81)	—	—	—
12/26/24	SALE	(2)	1,101.0572	SERVICENOW INC (81762P102)	2,202.05	2,202.05	—	—	—
12/26/24	PURCHASE	99	61.6177	UBER TECHNOLOGIES INC (90353T100)	(6,100.15)	(6,100.15)	—	—	—
12/26/24	SALE	(5)	509.7985	UNITEDHEALTH GROUP INC (91324P102)	2,548.92	2,548.92	—	—	—
12/26/24	PURCHASE	15	119.5960	VALERO ENERGY CORP (91913Y100)	(1,793.94)	(1,793.94)	—	—	—
12/26/24	DIVIDEND		0.0000	VANGUARD S&P MID CAP 400 INDEX ETF 122624 88 (921932885)	36.00	36.00	—	—	—
12/26/24	SALE	(12,748)	1.0000	VANGUARD FEDERAL MONEY MARKET INVESTOR CL (922906300)	12,748.00	12,748.00	—	—	—
12/26/24	SALE	(618)	55.3760	VANGUARD LONG TERM TREASURY ETF (92206C847)	34,221.42	34,221.42	—	—	—
12/26/24	DIVIDEND		0.0000	VANGUARD RUSSELL 2000 INDEX FD ETF SHARES 122624 171 (92206C664)	56.67	56.67	—	—	—
12/26/24	DIVIDEND		0.0000	VANGUARD S&P 500 INDEX ETF 122624 59 (922908363)	102.57	102.57	—	—	—
12/26/24	SALE	(15)	553.2104	VANGUARD S&P 500 INDEX ETF (922908363)	8,297.93	8,297.93	—	—	—
12/26/24	DIVIDEND		0.0000	VANGUARD REAL ESTATE INDEX ETF 122624 325 (922908553)	278.04	278.04	—	—	—
12/26/24	Cash Sweep Out		1.0000	BANK INSD DEPOSIT ACCT FDIC INSURED	—	(280.21)	—	—	—
12/26/24	BIDP Sweep In		1.0000	BANK INSD DEPOSIT ACCT FDIC INSURED	—	—	—	—	280.21
12/27/24	DIVIDEND		0.0000	NVIDIA CORP 122724 74 (67066G104)	0.74	0.74	—	—	—

Activity details (continued)

Date	Activity	Quantity	Price (\$)	Description	Total (\$)	Cash (\$)	Margin (\$)	Money Market (\$)	Bank Insured Deposit (\$)
12/27/24	DIVIDEND		0.0000	VANGUARD LONG TERM TREASURY ETF 122724 618 (92206C847)	128.24	128.24	—	—	—
12/27/24	BIDP Sweep Out		1.0000	BANK INSD DEPOSIT ACCT FDIC INSURED	—	—	—	—	(3,335.40)
12/27/24	Cash Sweep In		1.0000	BANK INSD DEPOSIT ACCT FDIC INSURED	—	3,335.40	—	—	—
12/30/24	DIVIDEND		0.0000	JPMORGAN CORE PLUS BOND CL I 123024 5,657.49800 (4812C0845)	165.26	165.26	—	—	—
12/30/24	REINVEST DIV	23.309	0.0000	JPMORGAN CORE PLUS BOND CL I REINVEST AT 7.090 (4812C0845)	(165.26)	(165.26)	—	—	—
12/30/24	Cash Sweep Out		1.0000	BANK INSD DEPOSIT ACCT FDIC INSURED	—	(128.98)	—	—	—
12/30/24	BIDP Sweep In		1.0000	BANK INSD DEPOSIT ACCT FDIC INSURED	—	—	—	—	128.98
12/31/24	DIVIDEND		0.0000	BROADCOM INC 123124 58 (11135F101)	34.22	34.22	—	—	—
12/31/24	DIVIDEND		0.0000	PROLOGIS INC 123124 45 (74340W103)	43.20	43.20	—	—	—
12/31/24	INTEREST		0.0000	BANK INSD DEPOSIT ACCT FDIC INSURED 123124 3,762	4.11	—	—	—	4.11
				Totals	3,839.85	77.42	—	—	3,762.43

Bank Insured Deposit Program

Program Balances	Current Value (\$)	Program Balances	Current Value (\$)
Bank of Baroda	3,762.43		
Total BIDP Deposits			3,762.43

As of the end of the period covered by this statement you had funds in the amounts and at the bank(s)/money market fund shown above relating to the Bank Insured Deposit Program (BIDP). For other information relating to the BIDP, see the Cash and Cash Equivalent information on page two of this statement for the interest rate earned during the period and the activity details section of this statement for the total interest earned and credited during the period. Funds held in the banks shown above are obligations of those banks and not of D.A. Davidson & Co. Funds held at a money market fund are obligations of the Fund Company and not of D.A. Davidson & Co. Funds held at banks in the BIDP are eligible for insurance to applicable limits by the Federal Deposit Insurance Corporation (FDIC), provided that any additional funds above such deposit limits will be deposited in an account at a designated money market fund. BIDP account funds swept to banks are not protected by Securities Investor Protection Corporation (SIPC). Excess funds swept to a money market fund are subject to SIPC protection. More information about D.A. Davidson's BIDP and applicable limits may be obtained at www.dadavidson.com/bidp. Questions about the BIDP or your balances and account activity in the BIDP should be directed to your Financial Professional.

Below is a full list of banks in the Bank Insured Deposit Program (BIDP) including banks leaving or joining the program. To see which banks are available to your account and the order in which funds are placed in the banks, you will find the most current list at this link: (dadavidson.com/Portals/0/bus-wm/bank%20list/priority_bank_list.pdf)

Bank of Baroda	Bank of East Asia Ltd	Bank of India	C3bank NA
Cadence Bank	East West Bank	First Internet Bank of Indiana	Glacier Bank
Goldman Sachs Bank USA	HSBC Bank USA NA	Merrick Bank	Morgan Stanley Bank NA
Morgan Stanley Private Bank	SMBC Manubank	State Bank of India	Synovus Bank
Toyota Financial Savings Bank	TriState Capital Bank	Truist Bank	Umpqua Bank
US Bank NA	Valley National Bank	WEX Bank	

Banks Entering Program

Bank of New York Mellon

Trusted Contact

Name	Phone
NOT PROVIDED	Please Provide

If no Trusted Contact information is listed, or the information on file has changed, please contact your Financial Professional.
By providing information about trusted contact person(s), you authorize us to contact the trusted contact person(s) and disclose information about your account to those person(s) in the following circumstances: To address possible financial exploitation, to confirm the specifics of your current contact information, health status, or the identity of any legal guardian, executor, trustee or holder of a power of attorney, or as otherwise permitted by FINRA Rule 2165 (Financial Exploitation of Specified Adults). This designation does not provide trading authority or the ability to act as attorney-in-fact. Please note, your trusted contact must be 18 years or older, cannot be an owner, trustee or attorney-in-fact on the account, or your Financial Professional.

*** END OF STATEMENT ***



D | A | DAVIDSON

Current period ending December 31, 2024

Account Name: SHERIDAN COUNTY MEMORIAL
HOSPITAL FOUNDATION
LORRAINE S HUSMAN TRUST
ATTN: ADA KIRVEN

Your Financial Professional:
STEAMBOAT INVESTMENT PARTNERS
2 N MAIN ST, SUITE 102
SHERIDAN, WY 82801

If you have more than one account with us, why not link them and receive summary information for your entire household? Contact your Financial Professional for more details.

SHERIDAN COUNTY MEMORIAL
HOSPITAL FOUNDATION
LORRAINE S HUSMAN TRUST
ATTN: ADA KIRVEN
PO BOX 391
SHERIDAN WY 82801

Obtain a copy of D.A. Davidson & Co.'s September 30, 2024, Statement of Financial Condition by visiting our website at dadavidson.com, by calling 1-800-332-5915, or by contacting your Financial Professional. D.A. Davidson & Co. is subject to the Uniform Net Capital Rule (15c3-1) pursuant to the Securities Exchange Act of 1934. Under the alternate method, the Company is required to maintain a net capital amount in excess of the greater of \$250,000 or 2% of aggregate debit balances as defined in the Formula for Reserve Requirements under SEC rule 15c3-3. At September 30, 2024, the Company's net capital of \$152,914,431 was 118.52% of aggregate debit items and net capital exceeded the required capital of \$2,580,463 by \$150,333,968.

Important information – please read

Your protection is our priority. Financial fraud is an ever-increasing risk in today's world. Financial services firms, including D.A. Davidson, have processes in place to help prevent fraudulent activities in areas such as wires, debit card transactions, and checks. Please be sure to carefully review your monthly statements and any other documents promptly, to detect any unauthorized or irregular activity.

Investment and insurance products are not FDIC insured, are not bank guaranteed and may lose value.



D | A | DAVIDSON

Corporate Office, D.A. Davidson & Co. member SIPC
Davidson Building · Great Falls, Montana 59401

(406) 727-4200 · Fax (406) 791-7315 · (800) 332-5915

www.dadavidson.com

About your statement - Statements are mailed monthly to clients who have transactions during the month that affect money balances and/or security positions. Statements are mailed quarterly to all other clients provided that the account contains a money or security balance. All positions, balances and activity are trade date based on this statement. Please review these statements carefully, and keep them for your records. If you note any discrepancies in your money balance, security positions, or activity in your account, please promptly report this to your Financial Professional or the Branch Office Manager for the branch where you maintain your account. To further protect your rights, including any rights under the Securities Investor Protection Act ("SIPA"), any verbal communications about inaccuracies or discrepancies in your account should be re-confirmed in writing. Your statement will be deemed correct unless we receive notice from you within 10 days of receipt. An explanation of your statement can be found on the D.A. Davidson website or upon request from your Financial Professional. If you have questions that are not adequately answered by these explanations, your Financial Professional will be happy to answer them for you.

Dadvantage available balance - Contact your Financial Professional for specific information regarding the Dadvantage program and eligibility.

Bank Insured Deposit Program (BIDP) - Funds held in banks are obligations of those banks and not of D.A. Davidson & Co. Funds held at the money market fund are obligations of the Fund Company and not of D.A. Davidson & Co. Funds held at banks in the BIDP are eligible for insurance to applicable limits by the Federal Deposit Insurance Corporation (FDIC) provided that any additional funds above such deposit limits will be deposited in an account at a designated money market fund. BIDP account funds swept to banks are not protected by Securities Investor Protection Corporation (SIPC). Excess funds swept to a money market fund are subject to SIPC protection. More information about D.A. Davidson's BIDP and applicable limits may be obtained at www.dadavidson.com/bidp. Questions about the BIDP or your balances and account activity in the BIDP should be directed to your Financial Professional.

Estimated annual income and current estimated yield - Estimated annual income (EAI) information presented in Holdings details, when available, reflects the estimated amount you would earn on a security if your current position and its related income remained constant for a year. Current Estimated Yield (EAY), when available, reflects the current estimated annual income divided by the current market value of the security as of the statement closing date. EAI and EAY contain certain types of securities that could include a return of principal capital gains, in which case the EAI and EAY would be overstated. In addition, bond calls, maturities, reclassification of dividends, capital gains and return of capital may overstate or understate EAI or EAY. EAI and EAY are estimates and the actual income and yield might be lower or higher than the estimated amounts. EAY reflects only the income generated by an investment and it does not reflect changes in the securities' price which may fluctuate. The information used to derive these estimates is obtained from third parties we consider reliable. Past performance is no guarantee of future results.

Research ratings - Ratings from Standard & Poor's and Moody's Financial Information Services may be displayed for certain securities listed on this statement. Ratings represent the opinions of the respective research providers, are subject to change, and should not be construed as representations or guarantees of performance. We obtained this information from third parties and therefore we cannot guarantee its accuracy. Please consult your Financial Professional for an interpretation of these ratings as they relate to your portfolio.

Security pricing - While sources used for pricing publicly traded securities are considered reliable, the prices displayed on our statement may be based on actual trades, bid/ask information or vendor evaluations. As such, the prices displayed on your statement may or may not reflect actual trade prices you would receive in the current market. Pricing for non-publicly traded securities is obtained from a variety of sources, which may include issuer-provided information. D.A. Davidson does not guarantee the accuracy, reliability, completeness or attainability of this information. Investment decisions should be made only after contacting your Financial Professional. Values on Fixed Income securities are based on estimates obtained from various sources. These values assume standard market conditions, are not firm bids or offers and may vary from prices achieved in actual transactions, especially for thinly traded securities. These values are generally for transactions of \$1 million or more, which often reflect more favorable pricing than transactions in smaller amounts. You may pay more than these values if you purchase smaller amounts of securities or receive less if you sell smaller amounts of securities. Securities pricing less than .001 will reflect a price per share of "0.00", but will display a total market value. Securities pricing at N/A indicate D.A. Davidson is unable to find a price for this security as of this statement date.

Revised 09/2021.

Summary of gains and losses - Gain and loss information is provided for information purposes only and should not be used for tax preparation. Gain or loss summary information may change due to basis adjustments. Information, if presented, includes only the securities for which we have original cost information. If you know the original cost of securities not purchased at D.A. Davidson, but included in your statement, please contact your Financial Professional.

Equity Dividend Reinvestment Program - By electing to reinvest equity dividend payments on eligible securities your shares will be purchased using the executed market price on payable date. For any fractional only position liquidations either the last market close price or the market open price on trade date will be used. This activity can be seen on your Account Statement.

Margin accounts - This is a combined statement of your Margin Account of a special memorandum account maintained for you under Section 4(F)(6) of Regulation T issued by the Board of Governors of the Federal Reserve System. The permanent record of the separate account as required by Regulation T is available for your inspection upon request. If you have sold securities which you do not own under the Short Sale rule, we have, in accordance with regulations, segregated the proceeds from such transactions into your Short Sale Account. Any market increases and/or decreases will be transferred to your Margin Account weekly. These entries will be identified as "Mark to the Market" postings in the "Activity Detail" section of your statement. The Daily closing price is used in determining any appreciation or depreciation of the securities sold short. The rate of interest charged to your Margin Account is determined by the cost of borrowing money and the amount of the debit balance. The rate will change without notice as the cost of borrowing money is increased or decreased. In computing interest, all Cash and Margin Accounts are netted, with the exception of the Short Account and Dividend & Interest credits that are pending disbursement, so that the charge is made on the net daily balance.

Davidson SmartCreditSM borrowing power - Borrowing power is estimated as fifty percent of marginable securities in your investment account. Please contact your Financial Professional for applicable interest rates and loan eligibility.

Option Clients - Information with respect to commissions and other charges related to the execution of listed option transactions has been included in the confirmations of such transactions previously furnished by D.A. Davidson & Co. A summary of this information will be promptly furnished upon your request.

Municipal Securities - Continuing disclosure information regarding municipal securities is available at the Municipal Securities Rule Making Board's EMMA website at www.emma.msrb.org.

Other information - If you have elected to receive interest on Free Credit Balances reflected as "cash" in your account, please be advised that under federal securities laws, the firm is permitted to pay such interest only on balances arising as an incidence of securities trading activities. Customer Free Credit Balances may be used in this firm's business subject to the limitations of 17 CFR Section 240.15c3.3 under the Securities Exchange Act of 1934. You have the right to demand and receive from us in the course of normal business operations the delivery of: a) Any Free Credit Balances to which you are entitled. b) Any Fully-Paid Securities to which you are entitled. c) Any securities purchased on margin upon full payment of any indebtedness to us. If you participate in one of our Money Market Funds or Bank Insured Deposit Program, collected money balances from the Securities Accounts are transferred daily to begin earning dividends or interest as soon as possible. You may also make direct deposits and write checks with these accounts. You have the right at any time to demand the liquidation of any Money Market Fund or Bank Insured Deposit Program and have the monies held as a free credit balance of cash within your account.

All securities held by D.A. Davidson & Co. for you, but which are not registered in your name, are commingled with identical securities being held for other clients. In the event any securities so held are "called" by the issuer, we will determine the beneficial ownership thereof by an impartial random selection system as required by Exchange rules.

Assets not held at D.A. Davidson & Co. may not be covered by the Securities Investor Protection Corporation (SIPC). They are reflected on this statement solely as a service to the customer.

A financial statement of this firm is available for your personal inspection at our office or a copy of it will be mailed upon your written request.

When disbursing funds to our clients, it is our policy to issue all payments on the bank of our choice, unless the client requests otherwise.

"Senior Vice President," "Vice President," and "Associate Vice President" are honorary titles given to certain Financial Professionals of D.A. Davidson & Co. in recognition of their experience in the securities industry and their commitment to customer service.



D | A | DAVIDSON

December 1 - December 31, 2024

SHERIDAN COUNTY MEMORIAL
HOSPITAL FOUNDATION
EDUCATIONAL ENDOWMENT
ATTN: ADA KIRVEN
PO BOX 391
SHERIDAN WY 82801

Advisory Information:
PARAGON
STEAMBOAT INVESTMENT
PARTNERS

Account Number: 71032980

Prestige Status: Prestige Elite

STEAMBOAT INVESTMENT PARTNERS
2 N MAIN ST, SUITE 102
SHERIDAN, WY 82801
(800) 406-7333

Value of your account

	Current Period (\$)	Current Year to date (\$)
Total beginning account value	952,784.58	830,981.22
Change in the value of your account	(18,568.97)	103,234.39
Closing account value as of 12/31/2024	934,215.61	934,215.61

Account values include all assets and outstanding margin and/or loan balances.
Please see important disclosures under the section titled "Bank Insured Deposit Program" in this statement.

Your investment objectives and risk tolerance

Investment objective	Growth & Income
Risk tolerance	Moderate

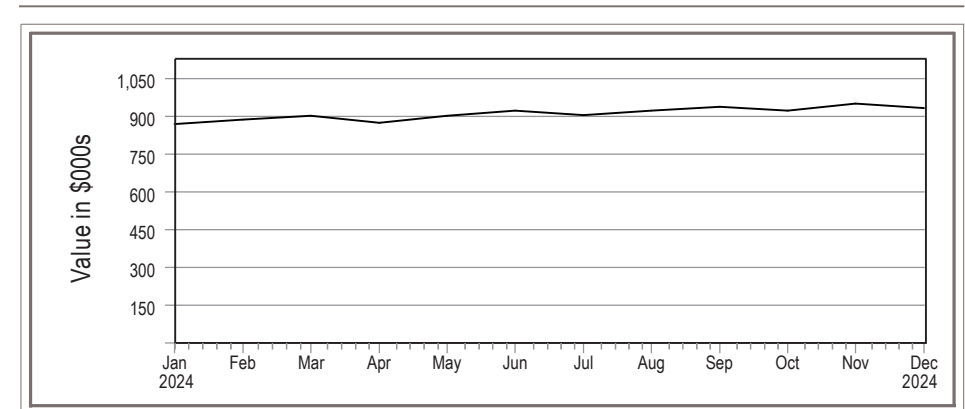
If the information in this section needs to be updated, contact your Financial Professional.

Davidson SmartCreditSM borrowing power and loan balance

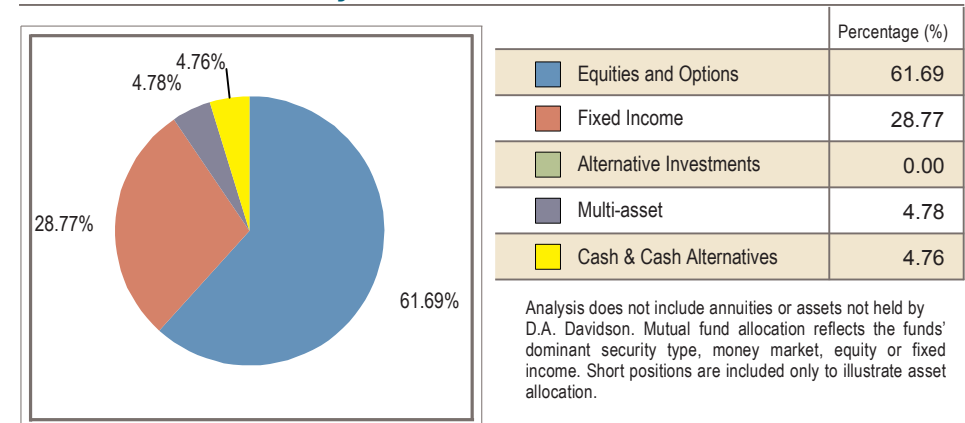
	Available Funds (\$)
Davidson SmartCredit SM	—
Loan balance	—

Contact your Financial Professional about the Davidson SmartCreditSM margin loan program. For more details, please see the Disclosure and Information page.

Value over time



Asset allocation analysis



Activity summary

	Current Period (\$)	Year to date (\$)
Deposits, security transfers received	–	37,025.00
Income received	10,459.92	31,280.33
Other funds credited	–	–
Sales	94,700.49	150,118.28
Checks and bill payments	–	–
Interest charges	–	–
Withdrawals, security transfers delivered	–	(33,286.66)
Foreign and/or federal tax withheld	–	–
Purchases	(105,209.19)	(182,488.70)
Expenses	–	(4,497.22)

For detailed information on activity occurring within this account see the Activity Details.
For detailed information about our brokerage and investment advisory services and the products we recommend, please visit www.dadavidson.com/disclosures where you will find our Form CRS - Client Relationship Summary, Regulation Best Interest Disclosures and various Product and Services Disclosures.

Income summary

	Current Period (\$)	Year to date (\$)
Taxable dividends	6,286.48	26,938.06
Non-taxable dividends	–	–
Taxable interest	16.09	184.92
Non-taxable interest	–	–
Capital gain income	4,157.35	4,157.35
Limited partnership distributions	–	–
Other taxable income	–	–
Other non-taxable income	–	–
Total Income	10,459.92	31,280.33
Taxable accrued income	–	–
Non-taxable accrued income	–	–

Taxable or non-taxable designation is determined at the security level, not at the account level. For detailed information on income received see the Activity Details.
Accrued income for purchases or sales is separately noted in the income summary and is included in the purchases and sales totals in the Activity summary. For details on the accrued income, please see the trade confirmation.

Holdings summary

	on November 30 (\$)	on December 31 (\$)
Cash and cash equivalents	6,074.34	6,025.56
Equities/options	300,905.12	301,398.64
Corporate bonds	–	–
Municipal bonds	–	–
Certificates of deposit	–	–
US Government bonds	–	–
Mutual funds	645,805.12	626,791.41
Non-Classified & annuities	–	–
Total assets	952,784.58	934,215.61

Cash & cash equivalent information

	Available Funds (\$)	Rate (%)
Cash Equivalent Funds/Money Market	–	–
Bank Insured Deposit Program	5,910.43	1.90
Cash	115.13	–
Total cash and cash equivalents	6,025.56	–

For details on this section see Disclosures.

DADVANTAGE

	Available Funds (\$)
Available for checkwriting and debit card transactions	–

Available balance may not accurately reflect recent deposits or withdrawals. Please see your Financial Professional for your most accurate available funds. For more details, please see the Disclosure and Additional Information section. Not all checkwriting programs are included in this section.

Gain/loss summary

	Realized gains and losses		Unrealized gains and losses
	on December 31 (\$)	Year to date (\$)	
Short term	(134.55)	3,758.20	959.17
Long term	7,510.61	24,016.40	129,754.61
Total	7,376.06	27,774.60	130,713.78

Holdings details

This section reflects the impact of positions purchased/sold on a trade date basis, and will include positions purchased and omit positions sold in the current month. Please see the Pending Trades section for more information. The "Market Value" and "Unrealized Gain/(Loss)" figures shown are representative values as of the last business day of the statement period indicated, which may not reflect the value that could actually be obtained in the market. For more details on pricing, cost basis, estimated annual income and current estimated yield see the disclosures section of the statement.

New Treasury regulations require that we report on Form 1099-B, after the close of the tax year, your adjusted cost basis and classify the gain or loss as either long-term or short-term on the sale of covered securities acquired on or after January 1, 2011. These regulations also require that we make basis adjustments due to wash sales, certain corporate actions and transfer by gift or inheritance, which will be reflected on your form 1099-B. Cost basis is reflected on monthly statements for informational purposes only and should not be used in the preparation of your income tax returns. Cost information is presented as a general guide to portfolio performance. Please refer to the disclosures section of this statement for additional information. An "M" in the purchase date indicates a position is made up of multiple trades/tax lots.

Quantity	Holding Description	Security Identifier Ratings	Purchase Date	Cost Basis (\$)	Total Cost Basis (\$)	Market Value (\$)	Total Market Value (\$)	Gain/Loss (\$)	Est. Annual Income (\$)	Current Yield (%)
	Equities / options									
13.0000	ACCENTURE PLC IRELAND CL A	ACN	M	237.162	3,083.11	351.790	4,573.27	1,490.16	76.96	1.68
21.0000	ADOBE INC	ADBE	M	458.264	9,623.55	444.680	9,338.28	(285.27)	—	—
53.0000	ALPHABET INC CL C	GOOG	M	105.821	5,608.54	190.440	10,093.32	4,484.78	42.40	0.42
63.0000	AMAZON.COM INC	AMZN	M	109.000	6,866.98	219.390	13,821.57	6,954.59	—	—
84.0000	APPLE INC	AAPL	M	148.398	12,465.44	250.420	21,035.28	8,569.84	84.00	0.40
34.0000	AUTOMATIC DATA PROCESSING INC	ADP	M	174.849	5,944.87	292.730	9,952.82	4,007.95	209.44	2.10
91.0000	BROADCOM INC	AVGO	11/7/22	47.624	4,333.80	231.840	21,097.44	16,763.64	192.92	0.91
36.0000	CHUBB LTD	CB	M	137.117	4,936.21	276.300	9,946.80	5,010.59	131.04	1.32
17.0000	COSTCO WHOLESALE CORP	COST	M	384.030	6,528.52	916.270	15,576.59	9,048.07	78.88	0.51
22.0000	CROWDSTRIKE HOLDINGS INC CL A	CRWD	M	290.065	6,381.43	342.160	7,527.52	1,146.09	—	—
140.0000	CSX CORP	CSX	3/14/24	36.869	5,161.66	32.270	4,517.80	(643.86)	67.20	1.49
14.0000	CUMMINS INC	CMI	M	236.771	3,314.80	348.600	4,880.40	1,565.60	101.92	2.09
36.0000	EOG RESOURCES INC	EOG	3/14/24	122.687	4,416.75	122.580	4,412.88	(3.87)	140.40	3.18
30.0000	JACK HENRY & ASSOCIATES INC	JKHY	3/14/24	171.656	5,149.67	175.300	5,259.00	109.33	66.00	1.25
54.0000	JOHNSON & JOHNSON	JNJ	M	145.709	7,868.29	144.620	7,809.48	(58.81)	267.84	3.43
45.0000	JPMORGAN CHASE & CO	JPM	M	125.676	5,655.43	239.710	10,786.95	5,131.52	225.00	2.08
15.0000	MCDONALDS CORP	MCD	M	287.730	4,315.95	289.890	4,348.35	32.40	106.20	2.44
43.0000	MICROSOFT CORP	MSFT	M	206.842	8,894.23	421.500	18,124.50	9,230.27	142.76	0.79
5.0000	NETFLIX INC	NFLX	4/28/22	193.900	969.50	891.320	4,456.60	3,487.10	—	—

Holdings details (continued)

Quantity	Holding Description	Security Identifier Ratings	Purchase Date	Cost Basis (\$)	Total Cost Basis (\$)	Market Value (\$)	Total Market Value (\$)	Gain/Loss (\$)	Est. Annual Income (\$)	Current Yield (%)
	Equities / options (continued)									
118.0000	NVIDIA CORP	NVDA	12/11/23	46.796	5,521.93	134.290	15,846.22	10,324.29	4.72	0.03
90.0000	PROLOGIS INC	PLD	M	131.794	11,861.47	105.700	9,513.00	(2,348.47)	345.60	3.63
165.0000	REALTY INCOME CORP	O	M	63.510	10,479.12	53.410	8,812.65	(1,666.47)	521.73	5.92
19.0000	S&P GLOBAL INC	SPGI	M	344.973	6,554.49	498.030	9,462.57	2,908.08	69.16	0.73
9.0000	SERVICENOW INC	NOW	12/11/23	705.169	6,346.52	1,060.120	9,541.08	3,194.56	—	—
52.0000	STARBUCKS CORP	SBUX	M	82.178	4,273.25	91.250	4,745.00	471.75	126.88	2.67
29.0000	STRYKER CORP	SYK	M	176.171	5,108.95	360.050	10,441.45	5,332.50	97.44	0.93
156.0000	UBER TECHNOLOGIES INC	UBER	12/26/24	61.618	9,612.36	60.320	9,409.92	(202.44)	—	—
76.0000	UNITED PARCEL SERVICE INC CL B	UPS	M	124.043	9,427.26	126.100	9,583.60	156.34	495.52	5.17
95.0000	VALERO ENERGY CORP	VLO	M	77.260	7,339.73	122.590	11,646.05	4,306.32	406.60	3.49
32.0000	VISA INC CL A	V	M	211.147	6,756.71	316.040	10,113.28	3,356.57	75.52	0.75
29.0000	ZOETIS INC CL A	ZTS	M	144.257	4,183.47	162.930	4,724.97	541.50	50.11	1.06
	Subtotal - Equities / options				198,983.99		301,398.64	102,414.65	4,126.24	

Quantity	Holding Description	Security Identifier Ratings	Purchase Date	Cost Basis (\$)	Total Cost Basis (\$)	Market Value (\$)	Total Market Value (\$)	Gain/Loss (\$)	Gain/Loss (\$) Client Investment	Est. Annual Income (\$)	Current Yield (%)
	Mutual Funds										
	ABRDN BLOOMBERG ALL COMMODITY STRATEGY K-1 FREE ETF	BCI									
1,717.0000	Client investment		M	22.022	37,811.25	19.750	33,910.75	(3,900.50)	(3,900.50)	1,117.25	3.29
	CAPITAL GROUP FIXED INCOME U S MULTI SECTOR INCOME ETF	CGMS									
884.0000	Client investment		12/26/24	27.186	24,032.74	27.280	24,115.52	82.78	82.78	1,424.74	5.91
	CAPITAL GROUP CORE BOND ETF	CGCB									
1,122.0000	Client investment		12/26/24	25.684	28,817.50	25.790	28,936.38	118.88	118.88	1,153.97	3.99

Holdings details (continued)

Quantity	Holding Description	Security Identifier Ratings	Purchase Date	Cost Basis (\$)	Total Cost Basis (\$)	Market Value (\$)	Total Market Value (\$)	Gain/Loss (\$)	Gain/Loss (\$) Client Investment	Est. Annual Income (\$)	Current Yield (%)
	Mutual Funds (continued)										
	ISHARES CORE MSCI EMERGING MARKETS ETF	IEMG									
259.0000	Client investment		M	44.704	11,578.35	52.220	13,524.98	1,946.63	1,946.63	385.13	2.85
	PACER TRENDPILOT US LARGE CAP ETF	PTLC									
522.0000	Client investment		12/26/24	55.249	28,840.29	53.440	27,895.68	(944.61)	(944.61)	266.42	0.95
	VANGUARD S&P MID CAP 400 INDEX ETF	IVOO									
136.0000	Client investment		M	64.314	8,746.74	105.500	14,348.00	5,601.26	5,601.26	191.35	1.33
	VANGUARD FTSE ALL WORLD EX US ETF	VEU									
463.0000	Client investment		M	44.748	20,718.18	57.410	26,580.83	5,862.65	5,862.65	816.73	3.07
	VANGUARD RUSSELL 2000 INDEX FD ETF SHARES	VTWO									
270.0000	Client investment		M	63.145	17,049.29	89.330	24,119.10	7,069.81	7,069.81	311.04	1.29
	VANGUARD S&P 500 INDEX ETF	VOO									
70.0000	Client investment		M	415.483	29,083.81	538.810	37,716.70	8,632.89	8,632.89	473.62	1.25
	VANGUARD REAL ESTATE INDEX ETF	VNQ									
522.0000	Client investment		M	86.992	45,409.68	89.080	46,499.76	1,090.08	1,090.08	1,903.21	4.09
	CAPITAL INCOME BUILDER CL F2	CAIFX									
212.1020	Client investment		M	60.696	12,873.82	68.880	14,609.59	1,735.78	1,735.77	—	—
61.4530	Total reinvested		M	64.257	3,948.82	68.880	4,232.87	284.06	4,232.87		
273.5550	Total quantity				16,822.64		18,842.46	2,019.84	5,968.64	661.04	3.51
	FPA NEW INCOME INSTL CL	FPNIX									
5,527.6670	Client investment		M	9.919	54,827.88	9.770	54,005.31	(822.58)	(822.57)	—	—
826.4710	Total reinvested		M	9.720	8,033.22	9.770	8,074.61	41.38	8,074.61		
6,354.1380	Total quantity				62,861.10		62,079.92	(781.20)	7,252.04	2,553.09	4.11

Holdings details (continued)

Quantity	Holding Description	Security Identifier Ratings	Purchase Date	Cost Basis (\$)	Total Cost Basis (\$)	Market Value (\$)	Total Market Value (\$)	Gain/Loss (\$)	Gain/Loss (\$) Client Investment	Est. Annual Income (\$)	Current Yield (%)
	Mutual Funds (continued)										
	INTERNATIONAL GROWTH & INCOME CL F2	IGFFX									
390.5370	Client investment		M	32.074	12,526.24	35.870	14,008.56	1,482.32	1,482.32	—	—
100.3600	Total reinvested		M	35.162	3,528.83	35.870	3,599.91	71.07	3,599.91		
490.8970	Total quantity				16,055.07		17,608.47	1,553.39	5,082.23	496.24	2.82
	JPMORGAN CORE PLUS BOND CL I	HLIPX									
7,526.0170	Client investment		M	8.372	63,006.37	7.110	53,509.98	(9,496.39)	(9,496.39)	—	—
1,292.6660	Total reinvested		M	7.525	9,727.77	7.110	9,190.85	(536.93)	9,190.85		
8,818.6830	Total quantity				72,734.14		62,700.83	(10,033.32)	(305.54)	3,039.80	4.85
	JPMORGAN MID CAP GROWTH CL I	HLGEX									
181.9090	Client investment		M	37.240	6,774.27	49.850	9,068.16	2,293.89	2,293.89	—	—
14.3060	Total reinvested		M	51.321	734.20	49.850	713.15	(21.04)	713.15		
196.2150	Total quantity				7,508.47		9,781.31	2,272.85	3,007.04	—	—
	MFS INTL GROWTH CL I	MQGIX									
400.6380	Client investment		M	38.435	15,398.45	47.260	18,934.15	3,535.71	3,535.70	—	—
83.9610	Total reinvested		M	46.319	3,888.99	47.260	3,967.99	79.01	3,967.99		
484.5990	Total quantity				19,287.44		22,902.14	3,614.72	7,503.69	273.36	1.19
	T ROWE PRICE CAP APPREC INSTL CL	TRAIX									
665.1440	Client investment		M	28.086	18,681.13	34.610	23,020.64	4,339.51	4,339.51	—	—
81.7700	Total reinvested		M	32.888	2,689.26	34.610	2,830.05	140.79	2,830.05		
746.9140	Total quantity				21,370.39		25,850.69	4,480.30	7,169.56	566.08	2.19

Holdings details (continued)

Quantity	Holding Description	Security Identifier Ratings	Purchase Date	Cost Basis (\$)	Total Cost Basis (\$)	Market Value (\$)	Total Market Value (\$)	Gain/Loss (\$)	Gain/Loss (\$) Client Investment	Est. Annual Income (\$)	Current Yield (%)
	Mutual Funds (continued)										
	VANGUARD FEDERAL MONEY MARKET INVESTOR CL	VMFXX									
31,515.0000	Client investment		M	1.000	31,515.00	1.000	31,515.00	—	—	—	—
6,906.4700	Total reinvested		M	1.000	6,906.47	1.000	6,906.47	—	6,906.47		
38,421.4700	Total quantity				38,421.47		38,421.47	—	6,906.47	1,752.01	4.56
	VIRTUS NEWFLEET MULTI SECTOR SHORT TERM BOND CL I	PIMSX									
17,215.3960	Client investment		M	4.553	78,388.58	4.530	77,985.75	(402.83)	(402.83)	—	—
2,863.2840	Total reinvested		M	4.524	12,955.18	4.530	12,970.67	15.51	12,970.67		
20,078.6800	Total quantity				91,343.76		90,956.42	(387.32)	12,567.84	4,511.67	4.96
	Subtotal - Mutual Funds				598,492.31		626,791.41	28,299.13	80,711.84	21,896.75	

Included in "Client Investment" are initial purchases and shares not obtained at D.A. Davidson or shares received as a transfer. "Total reinvested" is the total of all dividends and capital gains reinvested. Gain/Loss Client Investment represents a full gain or loss on the total reinvested shares.

	Total Cost Basis (\$)	Total Market Value (\$)	Gain/Loss (\$)	Estimated Annual Income (\$)
Total security value				
	797,476.30	928,190.05	130,713.78	26,022.99

Activity details

Date	Activity	Quantity	Price (\$)	Description	Total (\$)	Cash (\$)	Margin (\$)	Money Market (\$)	Bank Insured Deposit (\$)
	Opening Balance				6,074.34	41.48	—	—	6,032.86
12/2/24	DIVIDEND		0.0000	VANGUARD FEDERAL MONEY MARKET INVESTOR CL 112924 57,716.06000 (922906300)	219.41	219.41	—	—	—
12/2/24	REINVEST DIV	219.41	0.0000	VANGUARD FEDERAL MONEY MARKET INVESTOR CL REINVEST AT 1.000 (922906300)	(219.41)	(219.41)	—	—	—

Activity details (continued)

Date	Activity	Quantity	Price (\$)	Description	Total (\$)	Cash (\$)	Margin (\$)	Money Market (\$)	Bank Insured Deposit (\$)
12/2/24	DIVIDEND		0.0000	VIRTUS NEWFLEET MULTI SECTOR SHORT TERM BOND CL I 112924 19,992.76600 (92828R610)	390.05	390.05	—	—	—
12/2/24	REINVEST DIV	85.914	0.0000	VIRTUS NEWFLEET MULTI SECTOR SHORT TERM BOND CL I REINVEST AT 4.540 (92828R610)	(390.05)	(390.05)	—	—	—
12/2/24	DIVIDEND		0.0000	VISA INC CL A 120224 32 (92826C839)	18.88	18.88	—	—	—
12/2/24	Cash Sweep Out		1.0000	BANK INSD DEPOSIT ACCT FDIC INSURED	—	(41.48)	—	—	—
12/2/24	BIDP Sweep In		1.0000	BANK INSD DEPOSIT ACCT FDIC INSURED	—	—	—	—	41.48
12/3/24	DIVIDEND		0.0000	ZOETIS INC CL A 120324 22 (98978V103)	9.50	9.50	—	—	—
12/3/24	Cash Sweep Out		1.0000	BANK INSD DEPOSIT ACCT FDIC INSURED	—	(18.88)	—	—	—
12/3/24	BIDP Sweep In		1.0000	BANK INSD DEPOSIT ACCT FDIC INSURED	—	—	—	—	18.88
12/4/24	DIVIDEND		0.0000	VANGUARD LONG TERM TREASURY ETF 120424 746 (92206C847)	162.70	162.70	—	—	—
12/4/24	Cash Sweep Out		1.0000	BANK INSD DEPOSIT ACCT FDIC INSURED	—	(9.50)	—	—	—
12/4/24	BIDP Sweep In		1.0000	BANK INSD DEPOSIT ACCT FDIC INSURED	—	—	—	—	9.50
12/5/24	DIVIDEND		0.0000	CUMMINS INC 120524 17 (231021106)	30.94	30.94	—	—	—
12/5/24	DIVIDEND		0.0000	UNITED PARCEL SERVICE INC CL B 120524 59 (911312106)	96.17	96.17	—	—	—
12/5/24	Cash Sweep Out		1.0000	BANK INSD DEPOSIT ACCT FDIC INSURED	—	(162.70)	—	—	—
12/5/24	BIDP Sweep In		1.0000	BANK INSD DEPOSIT ACCT FDIC INSURED	—	—	—	—	162.70

Activity details (continued)

Date	Activity	Quantity	Price (\$)	Description	Total (\$)	Cash (\$)	Margin (\$)	Money Market (\$)	Bank Insured Deposit (\$)
12/6/24	Cash Sweep Out		1.0000	BANK INSD DEPOSIT ACCT FDIC INSURED	—	(127.11)	—	—	—
12/6/24	BIDP Sweep In		1.0000	BANK INSD DEPOSIT ACCT FDIC INSURED	—	—	—	—	127.11
12/10/24	DIVIDEND		0.0000	JOHNSON & JOHNSON 121024 54 (478160104)	66.96	66.96	—	—	—
12/11/24	DIVIDEND		0.0000	S&P GLOBAL INC 121124 19 (78409V104)	17.29	17.29	—	—	—
12/11/24	Cash Sweep Out		1.0000	BANK INSD DEPOSIT ACCT FDIC INSURED	—	(66.96)	—	—	—
12/11/24	BIDP Sweep In		1.0000	BANK INSD DEPOSIT ACCT FDIC INSURED	—	—	—	—	66.96
12/12/24	DIVIDEND		0.0000	MICROSOFT CORP 121224 43 (594918104)	35.69	35.69	—	—	—
12/12/24	Cash Sweep Out		1.0000	BANK INSD DEPOSIT ACCT FDIC INSURED	—	(17.29)	—	—	—
12/12/24	BIDP Sweep In		1.0000	BANK INSD DEPOSIT ACCT FDIC INSURED	—	—	—	—	17.29
12/13/24	DIVIDEND		0.0000	CSX CORP 121324 140 (126408103)	16.80	16.80	—	—	—
12/13/24	CAPITAL GAIN		0.0000	JPMORGAN MID CAP GROWTH CL I 121324 183.47400 (4812C1710)	672.07	672.07	—	—	—
12/13/24	REINVEST CAP	12.741	0.0000	JPMORGAN MID CAP GROWTH CL I REINVEST AT 52.750 (4812C1710)	(672.07)	(672.07)	—	—	—
12/13/24	DIVIDEND		0.0000	REALTY INCOME CORP 121324 165 (756109104)	43.48	43.48	—	—	—
12/13/24	INTEREST		0.0000	BANK INSD DEPOSIT ACCT FDIC INSURED 121324 6,522	9.69	—	—	—	9.69
12/13/24	Cash Sweep Out		1.0000	BANK INSD DEPOSIT ACCT FDIC INSURED	—	(35.69)	—	—	—

Activity details (continued)

Date	Activity	Quantity	Price (\$)	Description	Total (\$)	Cash (\$)	Margin (\$)	Money Market (\$)	Bank Insured Deposit (\$)
12/13/24	BIDP Sweep In		1.0000	BANK INSD DEPOSIT ACCT FDIC INSURED	—	—	—	—	35.69
12/16/24	DIVIDEND		0.0000	ALPHABET INC CL C 121624 53 (02079K107)	10.60	10.60	—	—	—
12/16/24	DIVIDEND		0.0000	MCDONALDS CORP 121624 15 (580135101)	26.55	26.55	—	—	—
12/16/24	Cash Sweep Out		1.0000	BANK INSD DEPOSIT ACCT FDIC INSURED	—	(60.28)	—	—	—
12/16/24	BIDP Sweep In		1.0000	BANK INSD DEPOSIT ACCT FDIC INSURED	—	—	—	—	60.28
12/17/24	DIVIDEND		0.0000	UNITEDHEALTH GROUP INC 121724 8 (91324P102)	16.80	16.80	—	—	—
12/17/24	Cash Sweep Out		1.0000	BANK INSD DEPOSIT ACCT FDIC INSURED	—	(37.15)	—	—	—
12/17/24	BIDP Sweep In		1.0000	BANK INSD DEPOSIT ACCT FDIC INSURED	—	—	—	—	37.15
12/18/24	ST CAP GAINS		0.0000	MFS INTL GROWTH CL I 121824 460.24900 (55273E848)	10.88	10.88	—	—	—
12/18/24	CAPITAL GAIN		0.0000	MFS INTL GROWTH CL I 121824 460.24900 (55273E848)	875.34	875.34	—	—	—
12/18/24	DIVIDEND		0.0000	MFS INTL GROWTH CL I 121824 460.24900 (55273E848)	296.20	296.20	—	—	—
12/18/24	REINVEST CAP	18.026	0.0000	MFS INTL GROWTH CL I REINVEST AT 48.560 (55273E848)	(875.34)	(875.34)	—	—	—
12/18/24	REINVEST DIV	6.1	0.0000	MFS INTL GROWTH CL I REINVEST AT 48.560 (55273E848)	(296.20)	(296.20)	—	—	—
12/18/24	REINVEST CAP	0.224	0.0000	MFS INTL GROWTH CL I REINVEST AT 48.560 (55273E848)	(10.88)	(10.88)	—	—	—

Activity details (continued)

Date	Activity	Quantity	Price (\$)	Description	Total (\$)	Cash (\$)	Margin (\$)	Money Market (\$)	Bank Insured Deposit (\$)
12/18/24	Cash Sweep Out		1.0000	BANK INSD DEPOSIT ACCT FDIC INSURED	—	(16.80)	—	—	—
12/18/24	BIDP Sweep In		1.0000	BANK INSD DEPOSIT ACCT FDIC INSURED	—	—	—	—	16.80
12/19/24	DIVIDEND		0.0000	T ROWE PRICE CAP APPREC INSTL CL 121924 728.93700 (77954M303)	622.00	622.00	—	—	—
12/19/24	ST CAP GAINS		0.0000	T ROWE PRICE CAP APPREC INSTL CL 121924 728.93700 (77954M303)	329.19	329.19	—	—	—
12/19/24	CAPITAL GAIN		0.0000	T ROWE PRICE CAP APPREC INSTL CL 121924 728.93700 (77954M303)	1,702.58	1,702.58	—	—	—
12/19/24	REINVEST DIV	17.977	0.0000	T ROWE PRICE CAP APPREC INSTL CL REINVEST AT 34.600 (77954M303)	(622.00)	(622.00)	—	—	—
12/20/24	DIVIDEND		0.0000	ABRDN BLOOMBERG ALL COMMODITY STRATEGY K-1 FREE ETF 122024 2.035 (003261104)	1,324.13	1,324.13	—	—	—
12/20/24	CAPITAL GAIN		0.0000	CAPITAL INCOME BUILDER CL F2 122024 263.27500 (140194101)	436.83	436.83	—	—	—
12/20/24	DIVIDEND		0.0000	CAPITAL INCOME BUILDER CL F2 122024 263.27500 (140194101)	263.77	263.77	—	—	—
12/20/24	REINVEST CAP	6.41	0.0000	CAPITAL INCOME BUILDER CL F2 REINVEST AT 68.150 (140194101)	(436.83)	(436.83)	—	—	—

Activity details (continued)

Date	Activity	Quantity	Price (\$)	Description	Total (\$)	Cash (\$)	Margin (\$)	Money Market (\$)	Bank Insured Deposit (\$)
12/20/24	REINVEST DIV	3.87	0.0000	CAPITAL INCOME BUILDER CL F2 REINVEST AT 68.150 (140194101)	(263.77)	(263.77)	—	—	—
12/20/24	DIVIDEND		0.0000	FPA NEW INCOME INSTL CL 121924 6,313.00300 (30254T643)	401.07	401.07	—	—	—
12/20/24	REINVEST DIV	41.135	0.0000	FPA NEW INCOME INSTL CL REINVEST AT 9.750 (30254T643)	(401.07)	(401.07)	—	—	—
12/20/24	DIVIDEND		0.0000	ISHARES CORE MSCI EMERGING MARKETS ETF 122024 259 (46434G103)	301.10	301.10	—	—	—
12/20/24	DIVIDEND		0.0000	VALERO ENERGY CORP 122024 95 (91913Y100)	101.65	101.65	—	—	—
12/20/24	Cash Sweep Out		1.0000	BANK INSD DEPOSIT ACCT FDIC INSURED	—	(2,031.77)	—	—	—
12/20/24	BIDP Sweep In		1.0000	BANK INSD DEPOSIT ACCT FDIC INSURED	—	—	—	—	2,031.77
12/23/24	DIVIDEND		0.0000	JACK HENRY & ASSOCIATES INC 122324 30 (426281101)	16.50	16.50	—	—	—
12/23/24	CAPITAL GAIN		0.0000	INTERNATIONAL GROWTH & INCOME CL F2 122324 484.98000 (45956T501)	130.46	130.46	—	—	—
12/23/24	DIVIDEND		0.0000	INTERNATIONAL GROWTH & INCOME CL F2 122324 484.98000 (45956T501)	81.86	81.86	—	—	—
12/23/24	REINVEST CAP	3.636	0.0000	INTERNATIONAL GROWTH & INCOME CL F2 REINVEST AT 35.880 (45956T501)	(130.46)	(130.46)	—	—	—

Activity details (continued)

Date	Activity	Quantity	Price (\$)	Description	Total (\$)	Cash (\$)	Margin (\$)	Money Market (\$)	Bank Insured Deposit (\$)
12/23/24	REINVEST DIV	2.281	0.0000	INTERNATIONAL GROWTH & INCOME CL F2 REINVEST AT 35.880 (45956T501)	(81.86)	(81.86)	—	—	—
12/23/24	Cash Sweep Out		1.0000	BANK INSD DEPOSIT ACCT FDIC INSURED	—	(1,726.88)	—	—	—
12/23/24	BIDP Sweep In		1.0000	BANK INSD DEPOSIT ACCT FDIC INSURED	—	—	—	—	1,726.88
12/24/24	DIVIDEND		0.0000	VANGUARD FTSE ALL WORLD EX US ETF 122424 463 (922042775)	435.36	435.36	—	—	—
12/24/24	Cash Sweep Out		1.0000	BANK INSD DEPOSIT ACCT FDIC INSURED	—	(16.50)	—	—	—
12/24/24	BIDP Sweep In		1.0000	BANK INSD DEPOSIT ACCT FDIC INSURED	—	—	—	—	16.50
12/26/24	SALE	(318)	19.5610	ABRDN BLOOMBERG ALL COMMODITY STRATEGY K-1 FREE ETF (003261104)	6,220.23	6,220.23	—	—	—
12/26/24	PURCHASE	7	451.2648	ADOBE INC (00724F101)	(3,158.85)	(3,158.85)	—	—	—
12/26/24	SALE	(14)	227.4317	AMAZON.COM INC (023135106)	3,183.95	3,183.95	—	—	—
12/26/24	PURCHASE	1,122	25.6840	CAPITAL GROUP CORE BOND ETF (14020Y508)	(28,817.50)	(28,817.50)	—	—	—
12/26/24	PURCHASE	884	27.1863	CAPITAL GROUP FIXED INCOME U S MULTI SECTOR INCOME ETF (14020Y300)	(24,032.74)	(24,032.74)	—	—	—
12/26/24	SALE	(3)	353.4901	CUMMINS INC (231021106)	1,060.44	1,060.44	—	—	—
12/26/24	SALE	(2)	919.2001	NETFLIX INC (64110L106)	1,838.35	1,838.35	—	—	—
12/26/24	PURCHASE	522	55.2496	PACER TRENDPILOT US LARGE CAP ETF (69374H105)	(28,840.29)	(28,840.29)	—	—	—
12/26/24	PURCHASE	26	106.7654	PROLOGIS INC (74340W103)	(2,775.90)	(2,775.90)	—	—	—

Activity details (continued)

Date	Activity	Quantity	Price (\$)	Description	Total (\$)	Cash (\$)	Margin (\$)	Money Market (\$)	Bank Insured Deposit (\$)
12/26/24	SALE	(3)	1,101.0572	SERVICENOW INC (81762P102)	3,303.08	3,303.08	—	—	—
12/26/24	SALE	(16)	91.8350	STARBUCKS CORP (855244109)	1,469.32	1,469.32	—	—	—
12/26/24	PURCHASE	156	61.6177	UBER TECHNOLOGIES INC (90353T100)	(9,612.36)	(9,612.36)	—	—	—
12/26/24	PURCHASE	17	126.8282	UNITED PARCEL SERVICE INC CL B (911312106)	(2,156.08)	(2,156.08)	—	—	—
12/26/24	SALE	(8)	509.7985	UNITEDHEALTH GROUP INC (91324P102)	4,078.28	4,078.28	—	—	—
12/26/24	DIVIDEND		0.0000	VANGUARD S&P MID CAP 400 INDEX ETF 122624 136 (921932885)	55.64	55.64	—	—	—
12/26/24	SALE	(19,514)	1.0000	VANGUARD FEDERAL MONEY MARKET INVESTOR CL (922906300)	19,514.00	19,514.00	—	—	—
12/26/24	SALE	(746)	55.3760	VANGUARD LONG TERM TREASURY ETF (92206C847)	41,309.35	41,309.35	—	—	—
12/26/24	DIVIDEND		0.0000	VANGUARD RUSSELL 2000 INDEX FD ETF SHARES 122624 270 (92206C664)	89.48	89.48	—	—	—
12/26/24	DIVIDEND		0.0000	VANGUARD S&P 500 INDEX ETF 122624 93 (922908363)	161.68	161.68	—	—	—
12/26/24	SALE	(23)	553.2104	VANGUARD S&P 500 INDEX ETF (922908363)	12,723.49	12,723.49	—	—	—
12/26/24	DIVIDEND		0.0000	VANGUARD REAL ESTATE INDEX ETF 122624 522 (922908553)	446.57	446.57	—	—	—
12/26/24	PURCHASE	7	165.5702	ZOETIS INC CL A (98978V103)	(1,158.99)	(1,158.99)	—	—	—
12/26/24	Cash Sweep Out		1.0000	BANK INSD DEPOSIT ACCT FDIC INSURED	—	(435.36)	—	—	—
12/26/24	BIDP Sweep In		1.0000	BANK INSD DEPOSIT ACCT FDIC INSURED	—	—	—	—	435.36

Activity details (continued)

Date	Activity	Quantity	Price (\$)	Description	Total (\$)	Cash (\$)	Margin (\$)	Money Market (\$)	Bank Insured Deposit (\$)
12/27/24	DIVIDEND		0.0000	NVIDIA CORP 122724 118 (67066G104)	1.18	1.18	—	—	—
12/27/24	DIVIDEND		0.0000	VANGUARD LONG TERM TREASURY ETF 122724 746 (92206C847)	154.80	154.80	—	—	—
12/27/24	BIDP Sweep Out		1.0000	BANK INSD DEPOSIT ACCT FDIC INSURED	—	—	—	—	(5,098.85)
12/27/24	Cash Sweep In		1.0000	BANK INSD DEPOSIT ACCT FDIC INSURED	—	5,098.85	—	—	—
12/30/24	DIVIDEND		0.0000	JPMORGAN CORE PLUS BOND CL I 123024 8,782.50000 (4812C0845)	256.54	256.54	—	—	—
12/30/24	REINVEST DIV	36.183	0.0000	JPMORGAN CORE PLUS BOND CL I REINVEST AT 7.090 (4812C0845)	(256.54)	(256.54)	—	—	—
12/30/24	Cash Sweep Out		1.0000	BANK INSD DEPOSIT ACCT FDIC INSURED	—	(155.98)	—	—	—
12/30/24	BIDP Sweep In		1.0000	BANK INSD DEPOSIT ACCT FDIC INSURED	—	—	—	—	155.98
12/31/24	DIVIDEND		0.0000	BROADCOM INC 123124 91 (11135F101)	53.69	53.69	—	—	—
12/31/24	DIVIDEND		0.0000	PROLOGIS INC 123124 64 (74340W103)	61.44	61.44	—	—	—
12/31/24	INTEREST		0.0000	BANK INSD DEPOSIT ACCT FDIC INSURED 123124 5,910	6.40	—	—	—	6.40
				Totals	6,025.56	115.13	—	—	5,910.43

Bank Insured Deposit Program

Program Balances	Current Value (\$)	Program Balances	Current Value (\$)
Bank of Baroda	5,910.43		
Total BIDP Deposits			5,910.43

As of the end of the period covered by this statement you had funds in the amounts and at the bank(s)/money market fund shown above relating to the Bank Insured Deposit Program (BIDP). For other information relating to the BIDP, see the Cash and Cash Equivalent information on page two of this statement for the interest rate earned during the period and the activity details section of this statement for the total interest earned and credited during the period. Funds held in the banks shown above are obligations of those banks and not of D.A. Davidson & Co. Funds held at a money market fund are obligations of the Fund Company and not of D.A. Davidson & Co. Funds held at banks in the BIDP are eligible for insurance to applicable limits by the Federal Deposit Insurance Corporation (FDIC), provided that any additional funds above such deposit limits will be deposited in an account at a designated money market fund. BIDP account funds swept to banks are not protected by Securities Investor Protection Corporation (SIPC). Excess funds swept to a money market fund are subject to SIPC protection. More information about D.A. Davidson's BIDP and applicable limits may be obtained at www.dadavidson.com/bidp. Questions about the BIDP or your balances and account activity in the BIDP should be directed to your Financial Professional.

Below is a full list of banks in the Bank Insured Deposit Program (BIDP) including banks leaving or joining the program. To see which banks are available to your account and the order in which funds are placed in the banks, you will find the most current list at this link: (dadavidson.com/Portals/0/bus-wm/bank%20list/priority_bank_list.pdf)

Bank of Baroda	Bank of East Asia Ltd	Bank of India	C3bank NA
Cadence Bank	East West Bank	First Internet Bank of Indiana	Glacier Bank
Goldman Sachs Bank USA	HSBC Bank USA NA	Merrick Bank	Morgan Stanley Bank NA
Morgan Stanley Private Bank	SMBC Manubank	State Bank of India	Synovus Bank
Toyota Financial Savings Bank	TriState Capital Bank	Truist Bank	Umpqua Bank
US Bank NA	Valley National Bank	WEX Bank	

Banks Entering Program

Bank of New York Mellon

Trusted Contact

Name	Phone
NOT PROVIDED	Please Provide

If no Trusted Contact information is listed, or the information on file has changed, please contact your Financial Professional.
By providing information about trusted contact person(s), you authorize us to contact the trusted contact person(s) and disclose information about your account to those person(s) in the following circumstances: To address possible financial exploitation, to confirm the specifics of your current contact information, health status, or the identity of any legal guardian, executor, trustee or holder of a power of attorney, or as otherwise permitted by FINRA Rule 2165 (Financial Exploitation of Specified Adults). This designation does not provide trading authority or the ability to act as attorney-in-fact. Please note, your trusted contact must be 18 years or older, cannot be an owner, trustee or attorney-in-fact on the account, or your Financial Professional.

*** END OF STATEMENT ***



D | A | DAVIDSON

Current period ending December 31, 2024

Account Name: SHERIDAN COUNTY MEMORIAL
HOSPITAL FOUNDATION
LORRAINE S HUSMAN TRUST
ATTN: ADA KIRVEN

Your Financial Professional:
STEAMBOAT INVESTMENT PARTNERS
2 N MAIN ST, SUITE 102
SHERIDAN, WY 82801

If you have more than one account with us, why not link them and receive summary information for your entire household? Contact your Financial Professional for more details.

SHERIDAN COUNTY MEMORIAL
HOSPITAL FOUNDATION
LORRAINE S HUSMAN TRUST
ATTN: ADA KIRVEN
PO BOX 391
SHERIDAN WY 82801

Obtain a copy of D.A. Davidson & Co.'s September 30, 2024, Statement of Financial Condition by visiting our website at dadavidson.com, by calling 1-800-332-5915, or by contacting your Financial Professional. D.A. Davidson & Co. is subject to the Uniform Net Capital Rule (15c3-1) pursuant to the Securities Exchange Act of 1934. Under the alternate method, the Company is required to maintain a net capital amount in excess of the greater of \$250,000 or 2% of aggregate debit balances as defined in the Formula for Reserve Requirements under SEC rule 15c3-3. At September 30, 2024, the Company's net capital of \$152,914,431 was 118.52% of aggregate debit items and net capital exceeded the required capital of \$2,580,463 by \$150,333,968.

Important information – please read

Your protection is our priority. Financial fraud is an ever-increasing risk in today's world. Financial services firms, including D.A. Davidson, have processes in place to help prevent fraudulent activities in areas such as wires, debit card transactions, and checks. Please be sure to carefully review your monthly statements and any other documents promptly, to detect any unauthorized or irregular activity.

Investment and insurance products are not FDIC insured, are not bank guaranteed and may lose value.



D | A | DAVIDSON

Corporate Office, D.A. Davidson & Co. member SIPC
Davidson Building · Great Falls, Montana 59401

(406) 727-4200 · Fax (406) 791-7315 · (800) 332-5915

www.dadavidson.com

About your statement - Statements are mailed monthly to clients who have transactions during the month that affect money balances and/or security positions. Statements are mailed quarterly to all other clients provided that the account contains a money or security balance. All positions, balances and activity are trade date based on this statement. Please review these statements carefully, and keep them for your records. If you note any discrepancies in your money balance, security positions, or activity in your account, please promptly report this to your Financial Professional or the Branch Office Manager for the branch where you maintain your account. To further protect your rights, including any rights under the Securities Investor Protection Act ("SIPA"), any verbal communications about inaccuracies or discrepancies in your account should be re-confirmed in writing. Your statement will be deemed correct unless we receive notice from you within 10 days of receipt. An explanation of your statement can be found on the D.A. Davidson website or upon request from your Financial Professional. If you have questions that are not adequately answered by these explanations, your Financial Professional will be happy to answer them for you.

Dadvantage available balance - Contact your Financial Professional for specific information regarding the Dadvantage program and eligibility.

Bank Insured Deposit Program (BIDP) - Funds held in banks are obligations of those banks and not of D.A. Davidson & Co. Funds held at the money market fund are obligations of the Fund Company and not of D.A. Davidson & Co. Funds held at banks in the BIDP are eligible for insurance to applicable limits by the Federal Deposit Insurance Corporation (FDIC) provided that any additional funds above such deposit limits will be deposited in an account at a designated money market fund. BIDP account funds swept to banks are not protected by Securities Investor Protection Corporation (SIPC). Excess funds swept to a money market fund are subject to SIPC protection. More information about D.A. Davidson's BIDP and applicable limits may be obtained at www.dadavidson.com/bidp. Questions about the BIDP or your balances and account activity in the BIDP should be directed to your Financial Professional.

Estimated annual income and current estimated yield - Estimated annual income (EAI) information presented in Holdings details, when available, reflects the estimated amount you would earn on a security if your current position and its related income remained constant for a year. Current Estimated Yield (EAY), when available, reflects the current estimated annual income divided by the current market value of the security as of the statement closing date. EAI and EAY contain certain types of securities that could include a return of principal capital gains, in which case the EAI and EAY would be overstated. In addition, bond calls, maturities, reclassification of dividends, capital gains and return of capital may overstate or understate EAI or EAY. EAI and EAY are estimates and the actual income and yield might be lower or higher than the estimated amounts. EAY reflects only the income generated by an investment and it does not reflect changes in the securities' price which may fluctuate. The information used to derive these estimates is obtained from third parties we consider reliable. Past performance is no guarantee of future results.

Research ratings - Ratings from Standard & Poor's and Moody's Financial Information Services may be displayed for certain securities listed on this statement. Ratings represent the opinions of the respective research providers, are subject to change, and should not be construed as representations or guarantees of performance. We obtained this information from third parties and therefore we cannot guarantee its accuracy. Please consult your Financial Professional for an interpretation of these ratings as they relate to your portfolio.

Security pricing - While sources used for pricing publicly traded securities are considered reliable, the prices displayed on our statement may be based on actual trades, bid/ask information or vendor evaluations. As such, the prices displayed on your statement may or may not reflect actual trade prices you would receive in the current market. Pricing for non-publicly traded securities is obtained from a variety of sources, which may include issuer-provided information. D.A. Davidson does not guarantee the accuracy, reliability, completeness or attainability of this information. Investment decisions should be made only after contacting your Financial Professional. Values on Fixed Income securities are based on estimates obtained from various sources. These values assume standard market conditions, are not firm bids or offers and may vary from prices achieved in actual transactions, especially for thinly traded securities. These values are generally for transactions of \$1 million or more, which often reflect more favorable pricing than transactions in smaller amounts. You may pay more than these values if you purchase smaller amounts of securities or receive less if you sell smaller amounts of securities. Securities pricing less than .001 will reflect a price per share of "0.00", but will display a total market value. Securities pricing at N/A indicate D.A. Davidson is unable to find a price for this security as of this statement date.

Revised 09/2021.

Summary of gains and losses - Gain and loss information is provided for information purposes only and should not be used for tax preparation. Gain or loss summary information may change due to basis adjustments. Information, if presented, includes only the securities for which we have original cost information. If you know the original cost of securities not purchased at D.A. Davidson, but included in your statement, please contact your Financial Professional.

Equity Dividend Reinvestment Program - By electing to reinvest equity dividend payments on eligible securities your shares will be purchased using the executed market price on payable date. For any fractional only position liquidations either the last market close price or the market open price on trade date will be used. This activity can be seen on your Account Statement.

Margin accounts - This is a combined statement of your Margin Account of a special memorandum account maintained for you under Section 4(F)(6) of Regulation T issued by the Board of Governors of the Federal Reserve System. The permanent record of the separate account as required by Regulation T is available for your inspection upon request. If you have sold securities which you do not own under the Short Sale rule, we have, in accordance with regulations, segregated the proceeds from such transactions into your Short Sale Account. Any market increases and/or decreases will be transferred to your Margin Account weekly. These entries will be identified as "Mark to the Market" postings in the "Activity Detail" section of your statement. The Daily closing price is used in determining any appreciation or depreciation of the securities sold short. The rate of interest charged to your Margin Account is determined by the cost of borrowing money and the amount of the debit balance. The rate will change without notice as the cost of borrowing money is increased or decreased. In computing interest, all Cash and Margin Accounts are netted, with the exception of the Short Account and Dividend & Interest credits that are pending disbursement, so that the charge is made on the net daily balance.

Davidson SmartCreditSM borrowing power - Borrowing power is estimated as fifty percent of marginable securities in your investment account. Please contact your Financial Professional for applicable interest rates and loan eligibility.

Option Clients - Information with respect to commissions and other charges related to the execution of listed option transactions has been included in the confirmations of such transactions previously furnished by D.A. Davidson & Co. A summary of this information will be promptly furnished upon your request.

Municipal Securities - Continuing disclosure information regarding municipal securities is available at the Municipal Securities Rule Making Board's EMMA website at www.emma.msrb.org.

Other information - If you have elected to receive interest on Free Credit Balances reflected as "cash" in your account, please be advised that under federal securities laws, the firm is permitted to pay such interest only on balances arising as an incidence of securities trading activities. Customer Free Credit Balances may be used in this firm's business subject to the limitations of 17 CFR Section 240.15c3.3 under the Securities Exchange Act of 1934. You have the right to demand and receive from us in the course of normal business operations the delivery of: a) Any Free Credit Balances to which you are entitled. b) Any Fully-Paid Securities to which you are entitled. c) Any securities purchased on margin upon full payment of any indebtedness to us. If you participate in one of our Money Market Funds or Bank Insured Deposit Program, collected money balances from the Securities Accounts are transferred daily to begin earning dividends or interest as soon as possible. You may also make direct deposits and write checks with these accounts. You have the right at any time to demand the liquidation of any Money Market Fund or Bank Insured Deposit Program and have the monies held as a free credit balance of cash within your account.

All securities held by D.A. Davidson & Co. for you, but which are not registered in your name, are commingled with identical securities being held for other clients. In the event any securities so held are "called" by the issuer, we will determine the beneficial ownership thereof by an impartial random selection system as required by Exchange rules.

Assets not held at D.A. Davidson & Co. may not be covered by the Securities Investor Protection Corporation (SIPC). They are reflected on this statement solely as a service to the customer.

A financial statement of this firm is available for your personal inspection at our office or a copy of it will be mailed upon your written request.

When disbursing funds to our clients, it is our policy to issue all payments on the bank of our choice, unless the client requests otherwise.

"Senior Vice President," "Vice President," and "Associate Vice President" are honorary titles given to certain Financial Professionals of D.A. Davidson & Co. in recognition of their experience in the securities industry and their commitment to customer service.



D | A | DAVIDSON

December 1 - December 31, 2024

SHERIDAN COUNTY MEMORIAL
HOSPITAL FOUNDATION
GIFTING ACCOUNT
ATTN: ADA KIRVEN
PO BOX 391
SHERIDAN WY 82801-0391

Account Number: 81740764

Prestige Status: Prestige Elite

STEAMBOAT INVESTMENT PARTNERS
2 N MAIN ST, SUITE 102
SHERIDAN, WY 82801
(800) 406-7333

Value of your account

	Current Period (\$)	Current Year to date (\$)
Total beginning account value	10,561.06	1,091.98
Change in the value of your account	(10,560.53)	(1,091.45)
Closing account value as of 12/31/2024	0.53	0.53

Account values include all assets and outstanding margin and/or loan balances.
Please see important disclosures under the section titled "Bank Insured Deposit Program" in this statement.

Your investment objectives and risk tolerance

Investment objective	Growth
Risk tolerance	Moderate

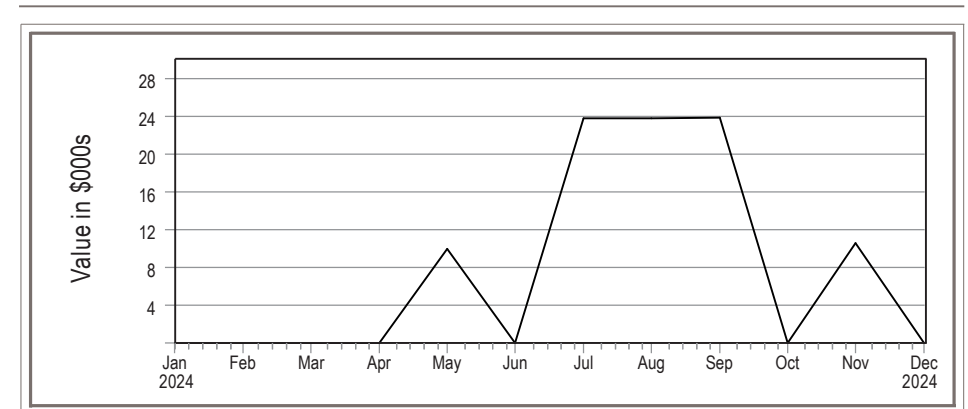
If the information in this section needs to be updated, contact your Financial Professional.

Davidson SmartCreditSM borrowing power and loan balance

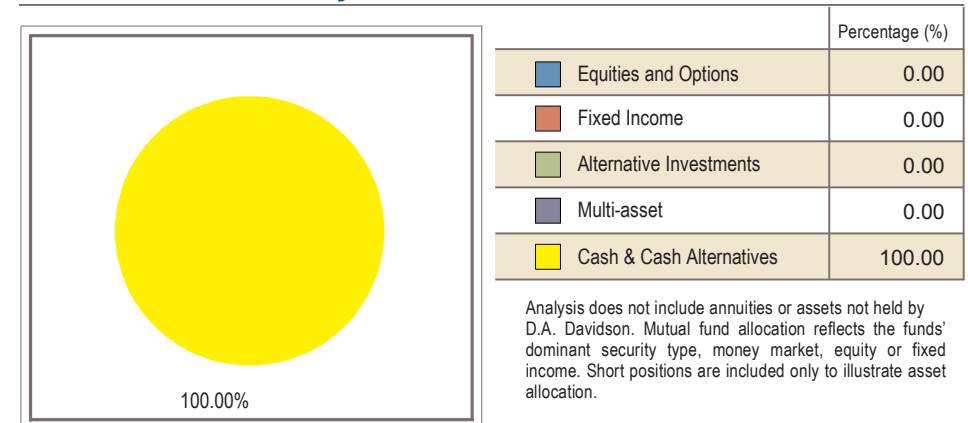
	Available Funds (\$)
Davidson SmartCredit SM	—
Loan balance	—

Contact your Financial Professional about the Davidson SmartCreditSM margin loan program. For more details, please see the Disclosure and Information page.

Value over time



Asset allocation analysis



Activity summary

	Current Period (\$)	Year to date (\$)
Deposits, security transfers received	—	80,274.58
Income received	12.23	166.90
Other funds credited	—	—
Sales	10,247.92	79,430.51
Checks and bill payments	—	—
Interest charges	—	—
Withdrawals, security transfers delivered	(10,260.93)	(80,689.79)
Foreign and/or federal tax withheld	—	—
Purchases	—	—
Expenses	—	—

For detailed information on activity occurring within this account see the Activity Details.

For detailed information about our brokerage and investment advisory services and the products we recommend, please visit www.dadavidson.com/disclosures where you will find our Form CRS - Client Relationship Summary, Regulation Best Interest Disclosures and various Product and Services Disclosures.

Income summary

	Current Period (\$)	Year to date (\$)
Taxable dividends	—	—
Non-taxable dividends	—	—
Taxable interest	12.23	166.90
Non-taxable interest	—	—
Capital gain income	—	—
Limited partnership distributions	—	—
Other taxable income	—	—
Other non-taxable income	—	—
Total Income	12.23	166.90
Taxable accrued income	—	—
Non-taxable accrued income	—	—

Taxable or non-taxable designation is determined at the security level, not at the account level. For detailed information on income received see the Activity Details.

Accrued income for purchases or sales is separately noted in the income summary and is included in the purchases and sales totals in the Activity summary. For details on the accrued income, please see the trade confirmation.

Holdings summary

	on November 30 (\$)	on December 31 (\$)
Cash and cash equivalents	1.31	0.53
Equities/options	10,559.75	—
Corporate bonds	—	—
Municipal bonds	—	—
Certificates of deposit	—	—
US Government bonds	—	—
Mutual funds	—	—
Non-Classified & annuities	—	—
Total assets	10,561.06	0.53

Cash & cash equivalent information

	Available Funds (\$)	Rate (%)
Cash Equivalent Funds/Money Market	—	—
Bank Insured Deposit Program	0.53	1.90
Cash	—	—
Total cash and cash equivalents	0.53	—

For details on this section see Disclosures.

DADVANTAGE

	Available Funds (\$)
Available for checkwriting and debit card transactions	—

Available balance may not accurately reflect recent deposits or withdrawals. Please see your Financial Professional for your most accurate available funds. For more details, please see the Disclosure and Additional Information section. Not all checkwriting programs are included in this section.

Gain/loss summary

	Realized gains and losses		Unrealized gains and losses
	on December 31 (\$)	Year to date (\$)	
Short term	—	110.73	—
Long term	—	36,879.02	—
Total	—	36,989.75	—

Activity details

Date	Activity	Quantity	Price (\$)	Description	Total (\$)	Cash (\$)	Margin (\$)	Money Market (\$)	Bank Insured Deposit (\$)
	Opening Balance				1.31	—	—	—	1.31
12/2/24	SALE	(25)	420.6742	CSW INDUSTRIALS INC (126402106)	10,247.92	10,247.92	—	—	—
12/4/24	Cash Sweep Out		1.0000	BANK INSD DEPOSIT ACCT FDIC INSURED	—	(10,247.92)	—	—	—
12/4/24	BIDP Sweep In		1.0000	BANK INSD DEPOSIT ACCT FDIC INSURED	—	—	—	—	10,247.92
12/13/24	INTEREST		0.0000	BANK INSD DEPOSIT ACCT FDIC INSURED 121324 10,255	6.38	—	—	—	6.38
12/26/24	ACH		0.0000	ACH DIRECT DEPOSIT TRACE # 101000690001605 SHERIDAN COUNTY MEMORIAL HOSPITAL FOUNDATION	(10,260.93)	(10,260.93)	—	—	—
12/27/24	INTEREST		0.0000	BANK INSD DEPOSIT ACCT FDIC INSURED	5.85	5.85	—	—	—
12/27/24	BIDP Sweep Out		1.0000	BANK INSD DEPOSIT ACCT FDIC INSURED	—	—	—	—	(10,255.61)
12/27/24	Cash Sweep In		1.0000	BANK INSD DEPOSIT ACCT FDIC INSURED	—	10,255.61	—	—	—
12/30/24	Cash Sweep Out		1.0000	BANK INSD DEPOSIT ACCT FDIC INSURED	—	(0.53)	—	—	—
12/30/24	BIDP Sweep In		1.0000	BANK INSD DEPOSIT ACCT FDIC INSURED	—	—	—	—	0.53
	Totals				0.53	—	—	—	0.53

Bank Insured Deposit Program

Program Balances	Current Value (\$)	Program Balances	Current Value (\$)
Bank of Baroda	0.53		
Total BIDP Deposits			0.53

As of the end of the period covered by this statement you had funds in the amounts and at the bank(s)/money market fund shown above relating to the Bank Insured Deposit Program (BIDP). For other information relating to the BIDP, see the Cash and Cash Equivalent information on page two of this statement for the interest rate earned during the period and the activity details section of this statement for the total interest earned and credited during the period. Funds held in the banks shown above are obligations of those banks and not of D.A. Davidson & Co. Funds held at a money market fund are obligations of the Fund Company and not of D.A. Davidson & Co. Funds held at banks in the BIDP are eligible for insurance to applicable limits by the Federal Deposit Insurance Corporation (FDIC), provided that any additional funds above such deposit limits will be deposited in an account at a designated money market fund. BIDP account funds swept to banks are not protected by Securities Investor Protection Corporation (SIPC). Excess funds swept to a money market fund are subject to SIPC protection. More information about D.A. Davidson's BIDP and applicable limits may be obtained at www.dadavidson.com/bidp. Questions about the BIDP or your balances and account activity in the BIDP should be directed to your Financial Professional.

Below is a full list of banks in the Bank Insured Deposit Program (BIDP) including banks leaving or joining the program. To see which banks are available to your account and the order in which funds are placed in the banks, you will find the most current list at this link: (dadavidson.com/Portals/0/bus-wm/bank%20list/priority_bank_list.pdf)

Bank of Baroda	Bank of East Asia Ltd	Bank of India	C3bank NA
Cadence Bank	East West Bank	First Internet Bank of Indiana	Glacier Bank
Goldman Sachs Bank USA	HSBC Bank USA NA	Merrick Bank	Morgan Stanley Bank NA
Morgan Stanley Private Bank	SMBC Manubank	State Bank of India	Synovus Bank
Toyota Financial Savings Bank	TriState Capital Bank	Truist Bank	Umpqua Bank
US Bank NA	Valley National Bank	WEX Bank	

Banks Entering Program

Bank of New York Mellon

Trusted Contact

Name	Phone
NOT PROVIDED	Please Provide

If no Trusted Contact information is listed, or the information on file has changed, please contact your Financial Professional.
By providing information about trusted contact person(s), you authorize us to contact the trusted contact person(s) and disclose information about your account to those person(s) in the following circumstances: To address possible financial exploitation, to confirm the specifics of your current contact information, health status, or the identity of any legal guardian, executor, trustee or holder of a power of attorney, or as otherwise permitted by FINRA Rule 2165 (Financial Exploitation of Specified Adults). This designation does not provide trading authority or the ability to act as attorney-in-fact. Please note, your trusted contact must be 18 years or older, cannot be an owner, trustee or attorney-in-fact on the account, or your Financial Professional.

*** END OF STATEMENT ***



D | A | DAVIDSON

Current period ending December 31, 2024

Account Name: SHERIDAN COUNTY MEMORIAL
HOSPITAL FOUNDATION
LORRAINE S HUSMAN TRUST
ATTN: ADA KIRVEN

Your Financial Professional:
STEAMBOAT INVESTMENT PARTNERS
2 N MAIN ST, SUITE 102
SHERIDAN, WY 82801

If you have more than one account with us, why not link them and receive summary information for your entire household? Contact your Financial Professional for more details.

SHERIDAN COUNTY MEMORIAL
HOSPITAL FOUNDATION
LORRAINE S HUSMAN TRUST
ATTN: ADA KIRVEN
PO BOX 391
SHERIDAN WY 82801

Obtain a copy of D.A. Davidson & Co.'s September 30, 2024, Statement of Financial Condition by visiting our website at dadavidson.com, by calling 1-800-332-5915, or by contacting your Financial Professional. D.A. Davidson & Co. is subject to the Uniform Net Capital Rule (15c3-1) pursuant to the Securities Exchange Act of 1934. Under the alternate method, the Company is required to maintain a net capital amount in excess of the greater of \$250,000 or 2% of aggregate debit balances as defined in the Formula for Reserve Requirements under SEC rule 15c3-3. At September 30, 2024, the Company's net capital of \$152,914,431 was 118.52% of aggregate debit items and net capital exceeded the required capital of \$2,580,463 by \$150,333,968.

Important information – please read

Your protection is our priority. Financial fraud is an ever-increasing risk in today's world. Financial services firms, including D.A. Davidson, have processes in place to help prevent fraudulent activities in areas such as wires, debit card transactions, and checks. Please be sure to carefully review your monthly statements and any other documents promptly, to detect any unauthorized or irregular activity.

Investment and insurance products are not FDIC insured, are not bank guaranteed and may lose value.



D | A | DAVIDSON

Corporate Office, D.A. Davidson & Co. member SIPC
Davidson Building · Great Falls, Montana 59401

(406) 727-4200 · Fax (406) 791-7315 · (800) 332-5915

www.dadavidson.com

About your statement - Statements are mailed monthly to clients who have transactions during the month that affect money balances and/or security positions. Statements are mailed quarterly to all other clients provided that the account contains a money or security balance. All positions, balances and activity are trade date based on this statement. Please review these statements carefully, and keep them for your records. If you note any discrepancies in your money balance, security positions, or activity in your account, please promptly report this to your Financial Professional or the Branch Office Manager for the branch where you maintain your account. To further protect your rights, including any rights under the Securities Investor Protection Act ("SIPA"), any verbal communications about inaccuracies or discrepancies in your account should be re-confirmed in writing. Your statement will be deemed correct unless we receive notice from you within 10 days of receipt. An explanation of your statement can be found on the D.A. Davidson website or upon request from your Financial Professional. If you have questions that are not adequately answered by these explanations, your Financial Professional will be happy to answer them for you.

Dadvantage available balance - Contact your Financial Professional for specific information regarding the Dadvantage program and eligibility.

Bank Insured Deposit Program (BIDP) - Funds held in banks are obligations of those banks and not of D.A. Davidson & Co. Funds held at the money market fund are obligations of the Fund Company and not of D.A. Davidson & Co. Funds held at banks in the BIDP are eligible for insurance to applicable limits by the Federal Deposit Insurance Corporation (FDIC) provided that any additional funds above such deposit limits will be deposited in an account at a designated money market fund. BIDP account funds swept to banks are not protected by Securities Investor Protection Corporation (SIPC). Excess funds swept to a money market fund are subject to SIPC protection. More information about D.A. Davidson's BIDP and applicable limits may be obtained at www.dadavidson.com/bidp. Questions about the BIDP or your balances and account activity in the BIDP should be directed to your Financial Professional.

Estimated annual income and current estimated yield - Estimated annual income (EAI) information presented in Holdings details, when available, reflects the estimated amount you would earn on a security if your current position and its related income remained constant for a year. Current Estimated Yield (EAY), when available, reflects the current estimated annual income divided by the current market value of the security as of the statement closing date. EAI and EAY contain certain types of securities that could include a return of principal capital gains, in which case the EAI and EAY would be overstated. In addition, bond calls, maturities, reclassification of dividends, capital gains and return of capital may overstate or understate EAI or EAY. EAI and EAY are estimates and the actual income and yield might be lower or higher than the estimated amounts. EAY reflects only the income generated by an investment and it does not reflect changes in the securities' price which may fluctuate. The information used to derive these estimates is obtained from third parties we consider reliable. Past performance is no guarantee of future results.

Research ratings - Ratings from Standard & Poor's and Moody's Financial Information Services may be displayed for certain securities listed on this statement. Ratings represent the opinions of the respective research providers, are subject to change, and should not be construed as representations or guarantees of performance. We obtained this information from third parties and therefore we cannot guarantee its accuracy. Please consult your Financial Professional for an interpretation of these ratings as they relate to your portfolio.

Security pricing - While sources used for pricing publicly traded securities are considered reliable, the prices displayed on our statement may be based on actual trades, bid/ask information or vendor evaluations. As such, the prices displayed on your statement may or may not reflect actual trade prices you would receive in the current market. Pricing for non-publicly traded securities is obtained from a variety of sources, which may include issuer-provided information. D.A. Davidson does not guarantee the accuracy, reliability, completeness or attainability of this information. Investment decisions should be made only after contacting your Financial Professional. Values on Fixed Income securities are based on estimates obtained from various sources. These values assume standard market conditions, are not firm bids or offers and may vary from prices achieved in actual transactions, especially for thinly traded securities. These values are generally for transactions of \$1 million or more, which often reflect more favorable pricing than transactions in smaller amounts. You may pay more than these values if you purchase smaller amounts of securities or receive less if you sell smaller amounts of securities. Securities pricing less than .001 will reflect a price per share of "0.00", but will display a total market value. Securities pricing at N/A indicate D.A. Davidson is unable to find a price for this security as of this statement date.

Revised 09/2021.

Summary of gains and losses - Gain and loss information is provided for information purposes only and should not be used for tax preparation. Gain or loss summary information may change due to basis adjustments. Information, if presented, includes only the securities for which we have original cost information. If you know the original cost of securities not purchased at D.A. Davidson, but included in your statement, please contact your Financial Professional.

Equity Dividend Reinvestment Program - By electing to reinvest equity dividend payments on eligible securities your shares will be purchased using the executed market price on payable date. For any fractional only position liquidations either the last market close price or the market open price on trade date will be used. This activity can be seen on your Account Statement.

Margin accounts - This is a combined statement of your Margin Account of a special memorandum account maintained for you under Section 4(F)(6) of Regulation T issued by the Board of Governors of the Federal Reserve System. The permanent record of the separate account as required by Regulation T is available for your inspection upon request. If you have sold securities which you do not own under the Short Sale rule, we have, in accordance with regulations, segregated the proceeds from such transactions into your Short Sale Account. Any market increases and/or decreases will be transferred to your Margin Account weekly. These entries will be identified as "Mark to the Market" postings in the "Activity Detail" section of your statement. The Daily closing price is used in determining any appreciation or depreciation of the securities sold short. The rate of interest charged to your Margin Account is determined by the cost of borrowing money and the amount of the debit balance. The rate will change without notice as the cost of borrowing money is increased or decreased. In computing interest, all Cash and Margin Accounts are netted, with the exception of the Short Account and Dividend & Interest credits that are pending disbursement, so that the charge is made on the net daily balance.

Davidson SmartCreditSM borrowing power - Borrowing power is estimated as fifty percent of marginable securities in your investment account. Please contact your Financial Professional for applicable interest rates and loan eligibility.

Option Clients - Information with respect to commissions and other charges related to the execution of listed option transactions has been included in the confirmations of such transactions previously furnished by D.A. Davidson & Co. A summary of this information will be promptly furnished upon your request.

Municipal Securities - Continuing disclosure information regarding municipal securities is available at the Municipal Securities Rule Making Board's EMMA website at www.emma.msrb.org.

Other information - If you have elected to receive interest on Free Credit Balances reflected as "cash" in your account, please be advised that under federal securities laws, the firm is permitted to pay such interest only on balances arising as an incidence of securities trading activities. Customer Free Credit Balances may be used in this firm's business subject to the limitations of 17 CFR Section 240.15c3.3 under the Securities Exchange Act of 1934. You have the right to demand and receive from us in the course of normal business operations the delivery of: a) Any Free Credit Balances to which you are entitled. b) Any Fully-Paid Securities to which you are entitled. c) Any securities purchased on margin upon full payment of any indebtedness to us. If you participate in one of our Money Market Funds or Bank Insured Deposit Program, collected money balances from the Securities Accounts are transferred daily to begin earning dividends or interest as soon as possible. You may also make direct deposits and write checks with these accounts. You have the right at any time to demand the liquidation of any Money Market Fund or Bank Insured Deposit Program and have the monies held as a free credit balance of cash within your account.

All securities held by D.A. Davidson & Co. for you, but which are not registered in your name, are commingled with identical securities being held for other clients. In the event any securities so held are "called" by the issuer, we will determine the beneficial ownership thereof by an impartial random selection system as required by Exchange rules.

Assets not held at D.A. Davidson & Co. may not be covered by the Securities Investor Protection Corporation (SIPC). They are reflected on this statement solely as a service to the customer.

A financial statement of this firm is available for your personal inspection at our office or a copy of it will be mailed upon your written request.

When disbursing funds to our clients, it is our policy to issue all payments on the bank of our choice, unless the client requests otherwise.

"Senior Vice President," "Vice President," and "Associate Vice President" are honorary titles given to certain Financial Professionals of D.A. Davidson & Co. in recognition of their experience in the securities industry and their commitment to customer service.



D | A | DAVIDSON

December 1 - December 31, 2024

SHERIDAN COUNTY MEMORIAL
HOSPITAL FOUNDATION
LORRAINE S HUSMAN TRUST
ATTN: ADA KIRVEN
PO BOX 391
SHERIDAN WY 82801

Advisory Information:
PARAGON
STEAMBOAT INVESTMENT
PARTNERS

Account Number: 83750357

Prestige Status: Prestige Elite

STEAMBOAT INVESTMENT PARTNERS
2 N MAIN ST, SUITE 102
SHERIDAN, WY 82801
(800) 406-7333

Value of your account

	Current Period (\$)	Current Year to date (\$)
Total beginning account value	6,436,574.39	5,502,015.85
Change in the value of your account	(165,391.17)	769,167.37
Closing account value as of 12/31/2024	6,271,183.22	6,271,183.22

Account values include all assets and outstanding margin and/or loan balances.
Please see important disclosures under the section titled "Bank Insured Deposit Program" in this statement.

Your investment objectives and risk tolerance

Investment objective	Growth & Income
Risk tolerance	Moderate

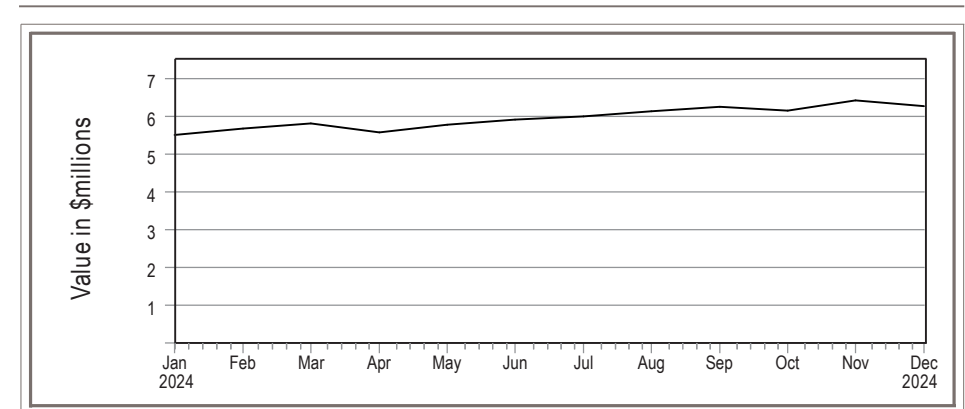
If the information in this section needs to be updated, contact your Financial Professional.

Davidson SmartCreditSM borrowing power and loan balance

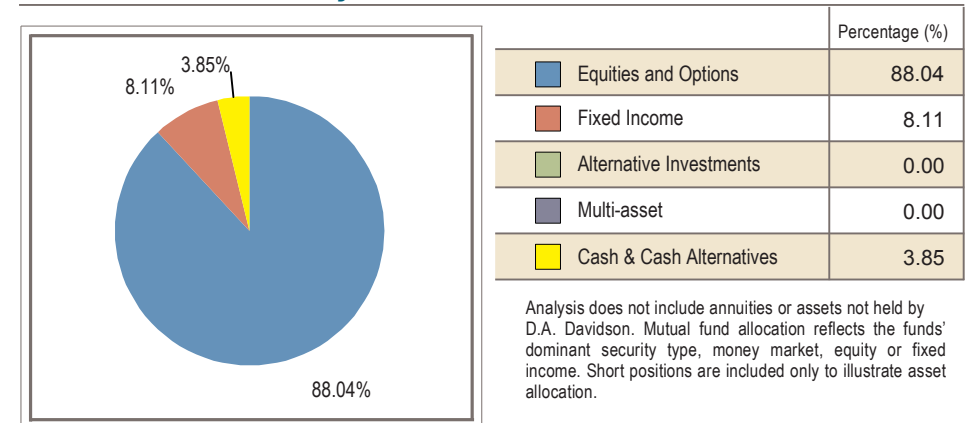
	Available Funds (\$)
Davidson SmartCredit SM	—
Loan balance	—

Contact your Financial Professional about the Davidson SmartCreditSM margin loan program. For more details, please see the Disclosure and Information page.

Value over time



Asset allocation analysis



Activity summary

	Current Period (\$)	Year to date (\$)
Deposits, security transfers received	—	2,612.29
Income received	65,818.16	160,716.03
Other funds credited	—	—
Sales	553,442.45	777,089.36
Checks and bill payments	—	—
Interest charges	—	—
Withdrawals, security transfers delivered	—	(6,408.00)
Foreign and/or federal tax withheld	—	—
Purchases	(611,754.08)	(913,666.47)
Expenses	—	(29,390.80)

For detailed information on activity occurring within this account see the Activity Details.

For detailed information about our brokerage and investment advisory services and the products we recommend, please visit www.dadavidson.com/disclosures where you will find our Form CRS - Client Relationship Summary, Regulation Best Interest Disclosures and various Product and Services Disclosures.

Income summary

	Current Period (\$)	Year to date (\$)
Taxable dividends	35,562.56	129,443.01
Non-taxable dividends	—	—
Taxable interest	92.02	1,109.44
Non-taxable interest	—	—
Capital gain income	30,163.58	30,163.58
Limited partnership distributions	—	—
Other taxable income	—	—
Other non-taxable income	—	—
Total Income	65,818.16	160,716.03
Taxable accrued income	—	—
Non-taxable accrued income	—	—

Taxable or non-taxable designation is determined at the security level, not at the account level. For detailed information on income received see the Activity Details.

Accrued income for purchases or sales is separately noted in the income summary and is included in the purchases and sales totals in the Activity summary. For details on the accrued income, please see the trade confirmation.

Holdings summary

	on November 30 (\$)	on December 31 (\$)
Cash and cash equivalents	35,158.01	42,664.54
Equities/options	2,652,557.05	2,588,322.00
Corporate bonds	—	—
Municipal bonds	—	—
Certificates of deposit	—	—
US Government bonds	—	—
Mutual funds	3,748,859.33	3,640,196.68
Non-Classified & annuities	—	—
Total assets	6,436,574.39	6,271,183.22

Cash & cash equivalent information

	Available Funds (\$)	Rate (%)
Cash Equivalent Funds/Money Market	—	—
Bank Insured Deposit Program	41,679.65	1.90
Cash	984.89	—
Total cash and cash equivalents	42,664.54	—

For details on this section see Disclosures.

DADVANTAGE

	Available Funds (\$)
Available for checkwriting and debit card transactions	—

Available balance may not accurately reflect recent deposits or withdrawals. Please see your Financial Professional for your most accurate available funds. For more details, please see the Disclosure and Additional Information section. Not all checkwriting programs are included in this section.

Gain/loss summary

	Realized gains and losses		Unrealized gains and losses
	on December 31 (\$)	Year to date (\$)	
Short term	2,290.19	7,099.24	32.71
Long term	49,302.64	128,856.00	1,342,903.64
Total	51,592.83	135,955.24	1,342,936.35

Holdings details

This section reflects the impact of positions purchased/sold on a trade date basis, and will include positions purchased and omit positions sold in the current month. Please see the Pending Trades section for more information. The "Market Value" and "Unrealized Gain/(Loss)" figures shown are representative values as of the last business day of the statement period indicated, which may not reflect the value that could actually be obtained in the market. For more details on pricing, cost basis, estimated annual income and current estimated yield see the disclosures section of the statement.

New Treasury regulations require that we report on Form 1099-B, after the close of the tax year, your adjusted cost basis and classify the gain or loss as either long-term or short-term on the sale of covered securities acquired on or after January 1, 2011. These regulations also require that we make basis adjustments due to wash sales, certain corporate actions and transfer by gift or inheritance, which will be reflected on your form 1099-B. Cost basis is reflected on monthly statements for informational purposes only and should not be used in the preparation of your income tax returns. Cost information is presented as a general guide to portfolio performance. Please refer to the disclosures section of this statement for additional information. An "M" in the purchase date indicates a position is made up of multiple trades/tax lots.

Quantity	Holding Description	Security Identifier Ratings	Purchase Date	Cost Basis (\$)	Total Cost Basis (\$)	Market Value (\$)	Total Market Value (\$)	Gain/Loss (\$)	Est. Annual Income (\$)	Current Yield (%)
	Equities / options									
164.0000	ACCENTURE PLC IRELAND CL A	ACN	M	235.698	38,654.51	351.790	57,693.56	19,039.05	970.88	1.68
147.0000	ADOBE INC	ADBE	M	449.896	66,134.75	444.680	65,367.96	(766.79)	—	—
574.0000	ALPHABET INC CL C	GOOG	M	74.676	42,863.94	190.440	109,312.56	66,448.62	459.20	0.42
584.0000	AMAZON.COM INC	AMZN	M	122.249	71,393.37	219.390	128,123.76	56,730.39	—	—
805.0000	APPLE INC	AAPL	M	133.883	107,776.15	250.420	201,588.10	93,811.95	805.00	0.40
210.0000	AUTOMATIC DATA PROCESSING INC	ADP	M	166.993	35,068.49	292.730	61,473.30	26,404.81	1,293.60	2.10
571.0000	BROADCOM INC	AVGO	M	47.226	26,966.05	231.840	132,380.64	105,414.59	1,210.52	0.91
243.0000	CHUBB LTD	CB	M	144.779	35,181.22	276.300	67,140.90	31,959.68	884.52	1.32
136.0000	COSTCO WHOLESALE CORP	COST	M	372.170	50,615.18	916.270	124,612.72	73,997.54	631.04	0.51
182.0000	CROWDSTRIKE HOLDINGS INC CL A	CRWD	M	301.509	54,874.64	342.160	62,273.12	7,398.48	—	—
898.0000	CSX CORP	CSX	3/14/24	36.869	33,108.36	32.270	28,978.46	(4,129.90)	431.04	1.49
188.0000	CUMMINS INC	CMI	M	235.124	44,203.39	348.600	65,536.80	21,333.41	1,368.64	2.09
134.0000	DEERE & CO	DE	M	329.995	44,219.34	423.700	56,775.80	12,556.46	787.92	1.39
269.0000	EOG RESOURCES INC	EOG	3/14/24	122.687	33,002.94	122.580	32,974.02	(28.92)	1,049.10	3.18
194.0000	JACK HENRY & ASSOCIATES INC	JKHY	3/14/24	171.656	33,301.19	175.300	34,008.20	707.01	426.80	1.25
454.0000	JOHNSON & JOHNSON	JNJ	M	146.945	66,713.19	144.620	65,657.48	(1,055.71)	2,251.84	3.43
274.0000	JPMORGAN CHASE & CO	JPM	M	112.017	30,692.73	239.710	65,680.54	34,987.81	1,370.00	2.08
243.0000	LOWES COMPANIES INC	LOW	M	118.158	28,712.33	246.800	59,972.40	31,260.07	1,117.80	1.86
179.0000	MCDONALDS CORP	MCD	12/11/23	288.157	51,580.19	289.890	51,890.31	310.12	1,267.32	2.44

Holdings details (continued)

Quantity	Holding Description	Security Identifier Ratings	Purchase Date	Cost Basis (\$)	Total Cost Basis (\$)	Market Value (\$)	Total Market Value (\$)	Gain/Loss (\$)	Est. Annual Income (\$)	Current Yield (%)
	Equities / options (continued)									
396.0000	MICROSOFT CORP	MSFT	M	210.088	83,194.79	421.500	166,914.00	83,719.21	1,314.72	0.79
72.0000	NETFLIX INC	NFLX	4/28/22	193.901	13,960.91	891.320	64,175.04	50,214.13	—	—
954.0000	NVIDIA CORP	NVDA	12/11/23	46.545	44,403.91	134.290	128,112.66	83,708.75	38.16	0.03
935.0000	PROLOGIS INC	PLD	M	135.580	126,767.04	105.700	98,829.50	(27,937.54)	3,590.40	3.63
1,448.0000	REALTY INCOME CORP	O	M	63.497	91,943.09	53.410	77,337.68	(14,605.41)	4,578.57	5.92
69.0000	S&P GLOBAL INC	SPGI	M	339.314	23,412.66	498.030	34,364.07	10,951.41	251.16	0.73
60.0000	SERVICENOW INC	NOW	12/11/23	705.578	42,334.66	1,060.120	63,607.20	21,272.54	—	—
751.0000	STARBUCKS CORP	SBUX	M	79.731	59,878.13	91.250	68,528.75	8,650.62	1,832.44	2.67
183.0000	STRYKER CORP	SYK	M	197.872	36,210.52	360.050	65,889.15	29,678.63	614.88	0.93
1,078.0000	UBER TECHNOLOGIES INC	UBER	12/26/24	61.618	66,423.88	60.320	65,024.96	(1,398.92)	—	—
431.0000	UNITED PARCEL SERVICE INC CL B	UPS	M	116.783	50,333.70	126.100	54,349.10	4,015.40	2,810.12	5.17
831.0000	VALERO ENERGY CORP	VLO	M	95.222	79,129.51	122.590	101,872.29	22,742.78	3,556.68	3.49
301.0000	VISA INC CL A	V	M	232.500	69,982.40	316.040	95,128.04	25,145.64	710.36	0.75
201.0000	ZOETIS INC CL A	ZTS	M	147.685	29,684.67	162.930	32,748.93	3,064.26	347.32	1.06
	Subtotal - Equities / options				1,712,721.83		2,588,322.00	875,600.17	35,970.03	

Quantity	Holding Description	Security Identifier Ratings	Purchase Date	Cost Basis (\$)	Total Cost Basis (\$)	Market Value (\$)	Total Market Value (\$)	Gain/Loss (\$)	Gain/Loss (\$) Client Investment	Est. Annual Income (\$)	Current Yield (%)
	Mutual Funds										
	ABRDN BLOOMBERG ALL COMMODITY STRATEGY K-1 FREE ETF	BCI									
14,470.0000	Client investment		M	22.015	318,556.44	19.750	285,782.50	(32,773.94)	(32,773.94)	9,415.62	3.29
	CAPITAL GROUP FIXED INCOME U S MULTI SECTOR INCOME ETF	CGMS									
2,440.0000	Client investment		12/26/24	27.186	66,334.70	27.280	66,563.20	228.50	228.50	3,932.54	5.91

Holdings details (continued)

Quantity	Holding Description	Security Identifier Ratings	Purchase Date	Cost Basis (\$)	Total Cost Basis (\$)	Market Value (\$)	Total Market Value (\$)	Gain/Loss (\$)	Gain/Loss (\$) Client Investment	Est. Annual Income (\$)	Current Yield (%)
	Mutual Funds (continued)										
	CAPITAL GROUP CORE BOND ETF	CGCB									
6,459.0000	Client investment		12/26/24	25.684	165,893.23	25.790	166,577.61	684.38	684.38	6,643.08	3.99
	ISHARES CORE MSCI EMERGING MARKETS ETF	IEMG									
2,092.0000	Client investment		M	49.659	103,887.21	52.220	109,244.24	5,357.03	5,357.03	3,110.80	2.85
	PACER TRENDPILOT US LARGE CAP ETF	PTLC									
3,007.0000	Client investment		12/26/24	55.250	166,135.55	53.440	160,694.08	(5,441.47)	(5,441.47)	1,534.77	0.95
	VANGUARD S&P MID CAP 400 INDEX ETF	IVOO									
2,067.0000	Client investment		M	66.536	137,530.83	105.500	218,068.50	80,537.67	80,537.67	2,908.26	1.33
	VANGUARD FTSE ALL WORLD EX US ETF	VEU									
2,889.0000	Client investment		M	45.169	130,492.48	57.410	165,857.49	35,365.01	35,365.01	5,096.19	3.07
	VANGUARD RUSSELL 2000 INDEX FD ETF SHARES	VTWO									
2,786.0000	Client investment		M	65.920	183,653.06	89.330	248,873.38	65,220.32	65,220.32	3,209.47	1.29
	VANGUARD S&P 500 INDEX ETF	VOO									
1,147.0000	Client investment		M	363.570	417,015.11	538.810	618,015.07	200,999.96	200,999.96	7,760.60	1.25
	VANGUARD REAL ESTATE INDEX ETF	VNQ									
2,633.0000	Client investment		M	83.770	220,566.01	89.080	234,547.64	13,981.63	13,981.63	9,599.91	4.09
	BLACKROCK EMERGING MARKETS INSTL CL	MADCX									
4,081.6940	Client investment		M	27.689	113,016.73	23.560	96,164.71	(16,852.02)	(16,852.02)	—	—
492.0890	Total reinvested		M	28.487	14,018.23	23.560	11,593.61	(2,424.62)	11,593.61		
4,573.7830	Total quantity				127,034.96		107,758.32	(19,276.64)	(5,258.41)	1,692.29	1.57

Holdings details (continued)

Quantity	Holding Description	Security Identifier Ratings	Purchase Date	Cost Basis (\$)	Total Cost Basis (\$)	Market Value (\$)	Total Market Value (\$)	Gain/Loss (\$)	Gain/Loss (\$) Client Investment	Est. Annual Income (\$)	Current Yield (%)
	Mutual Funds (continued)										
	FPA NEW INCOME INSTL CL	FPNIX									
9,809.4750	Client investment		M	9.724	95,384.35	9.770	95,838.62	454.22	454.27	—	—
1,434.8340	Total reinvested		M	9.694	13,908.99	9.770	14,018.27	109.30	14,018.27		
11,244.3090	Total quantity				109,293.34		109,856.89	563.52	14,472.54	4,517.96	4.11
	INTERNATIONAL GROWTH & INCOME CL F2	IGFFX									
6,187.1840	Client investment		M	32.593	201,656.87	35.870	221,934.28	20,277.43	20,277.41	—	—
1,699.5700	Total reinvested		M	35.351	60,081.33	35.870	60,963.58	882.26	60,963.58		
7,886.7540	Total quantity				261,738.20		282,897.86	21,159.69	81,240.99	7,972.71	2.82
	JPMORGAN CORE PLUS BOND CL I	HLIPX									
7,021.2350	Client investment		M	6.939	48,719.48	7.110	49,920.97	1,201.50	1,201.49	—	—
718.5280	Total reinvested		M	7.142	5,131.72	7.110	5,108.74	(22.95)	5,108.74		
7,739.7630	Total quantity				53,851.20		55,029.71	1,178.55	6,310.23	2,667.89	4.85
	JPMORGAN MID CAP GROWTH CL I	HLGEX									
5,373.4320	Client investment		M	37.240	200,106.58	49.850	267,865.58	67,759.00	67,759.00	—	—
437.9270	Total reinvested		M	50.943	22,309.41	49.850	21,830.66	(478.75)	21,830.66		
5,811.3590	Total quantity				222,415.99		289,696.24	67,280.25	89,589.66	—	—
	MFS INTL GROWTH CL I	MQGIX									
3,420.6960	Client investment		M	38.270	130,911.01	47.260	161,662.09	30,751.08	30,751.08	—	—
1,042.8130	Total reinvested		M	46.273	48,254.70	47.260	49,283.34	1,028.64	49,283.34		
4,463.5090	Total quantity				179,165.71		210,945.43	31,779.72	80,034.42	2,517.86	1.19

Holdings details (continued)

Quantity	Holding Description	Security Identifier Ratings	Purchase Date	Cost Basis (\$)	Total Cost Basis (\$)	Market Value (\$)	Total Market Value (\$)	Gain/Loss (\$)	Gain/Loss (\$) Client Investment	Est. Annual Income (\$)	Current Yield (%)
	Mutual Funds (continued)										
	VANGUARD FEDERAL MONEY MARKET INVESTOR CL	VMFXX									
160,153.0000	Client investment		M	1.000	160,153.00	1.000	160,153.00	—	—	—	—
38,841.5400	Total reinvested		M	1.000	38,841.54	1.000	38,841.54	—	38,841.54		
198,994.5400	Total quantity				198,994.54		198,994.54	—	38,841.54	9,074.15	4.56
	VIRTUS NEWFLEET MULTI SECTOR SHORT TERM BOND CL I	PIMSX									
18,471.3520	Client investment		M	4.493	82,992.95	4.530	83,675.20	682.28	682.25	—	—
5,986.4810	Total reinvested		M	4.562	27,309.03	4.530	27,118.78	(190.28)	27,118.78		
24,457.8330	Total quantity				110,301.98		110,793.98	492.00	27,801.03	5,495.67	4.96
	Subtotal - Mutual Funds				3,172,860.54		3,640,196.68	467,336.18	697,191.09	87,149.77	

Included in "Client Investment" are initial purchases and shares not obtained at D.A. Davidson or shares received as a transfer. "Total reinvested" is the total of all dividends and capital gains reinvested. Gain/Loss Client Investment represents a full gain or loss on the total reinvested shares.

	Total Cost Basis (\$)	Total Market Value (\$)	Gain/Loss (\$)	Estimated Annual Income (\$)
Total security value				
	4,885,582.37	6,228,518.68	1,342,936.35	123,119.80

Activity details

Date	Activity	Quantity	Price (\$)	Description	Total (\$)	Cash (\$)	Margin (\$)	Money Market (\$)	Bank Insured Deposit (\$)
	Opening Balance				35,158.01	458.11	—	—	34,699.90
12/2/24	DIVIDEND		0.0000	VANGUARD FEDERAL MONEY MARKET INVESTOR CL 112924 308,402.14000 (922906300)	1,172.40	1,172.40	—	—	—
12/2/24	REINVEST DIV	1,172.4	0.0000	VANGUARD FEDERAL MONEY MARKET INVESTOR CL REINVEST AT 1.000 (922906300)	(1,172.40)	(1,172.40)	—	—	—

Activity details (continued)

Date	Activity	Quantity	Price (\$)	Description	Total (\$)	Cash (\$)	Margin (\$)	Money Market (\$)	Bank Insured Deposit (\$)
12/2/24	DIVIDEND		0.0000	VIRTUS NEWFLEET MULTI SECTOR SHORT TERM BOND CL I 112924 24,353.18100 (92828R610)	475.12	475.12	—	—	—
12/2/24	REINVEST DIV	104.652	0.0000	VIRTUS NEWFLEET MULTI SECTOR SHORT TERM BOND CL I REINVEST AT 4.540 (92828R610)	(475.12)	(475.12)	—	—	—
12/2/24	DIVIDEND		0.0000	VISA INC CL A 120224 301 (92826C839)	177.59	177.59	—	—	—
12/2/24	Cash Sweep Out		1.0000	BANK INSD DEPOSIT ACCT FDIC INSURED	—	(458.11)	—	—	—
12/2/24	BIDP Sweep In		1.0000	BANK INSD DEPOSIT ACCT FDIC INSURED	—	—	—	—	458.11
12/3/24	DIVIDEND		0.0000	ZOETIS INC CL A 120324 145 (98978V103)	62.64	62.64	—	—	—
12/3/24	Cash Sweep Out		1.0000	BANK INSD DEPOSIT ACCT FDIC INSURED	—	(177.59)	—	—	—
12/3/24	BIDP Sweep In		1.0000	BANK INSD DEPOSIT ACCT FDIC INSURED	—	—	—	—	177.59
12/4/24	DIVIDEND		0.0000	VANGUARD LONG TERM TREASURY ETF 120424 4,411 (92206C847)	962.04	962.04	—	—	—
12/4/24	Cash Sweep Out		1.0000	BANK INSD DEPOSIT ACCT FDIC INSURED	—	(62.64)	—	—	—
12/4/24	BIDP Sweep In		1.0000	BANK INSD DEPOSIT ACCT FDIC INSURED	—	—	—	—	62.64
12/5/24	DIVIDEND		0.0000	CUMMINS INC 120524 220 (231021106)	400.40	400.40	—	—	—
12/5/24	DIVIDEND		0.0000	UNITED PARCEL SERVICE INC CL B 120524 431 (911312106)	702.53	702.53	—	—	—
12/5/24	Cash Sweep Out		1.0000	BANK INSD DEPOSIT ACCT FDIC INSURED	—	(962.04)	—	—	—
12/5/24	BIDP Sweep In		1.0000	BANK INSD DEPOSIT ACCT FDIC INSURED	—	—	—	—	962.04

Activity details (continued)

Date	Activity	Quantity	Price (\$)	Description	Total (\$)	Cash (\$)	Margin (\$)	Money Market (\$)	Bank Insured Deposit (\$)
12/6/24	Cash Sweep Out		1.0000	BANK INSD DEPOSIT ACCT FDIC INSURED	—	(1,102.93)	—	—	—
12/6/24	BIDP Sweep In		1.0000	BANK INSD DEPOSIT ACCT FDIC INSURED	—	—	—	—	1,102.93
12/10/24	DIVIDEND		0.0000	JOHNSON & JOHNSON 121024 324 (478160104)	401.76	401.76	—	—	—
12/11/24	DIVIDEND		0.0000	BLACKROCK EMERGING MARKETS INSTL CL 121124 4,510.33600 (09251J402)	1,540.50	1,540.50	—	—	—
12/11/24	REINVEST DIV	63.447	0.0000	BLACKROCK EMERGING MARKETS INSTL CL REINVEST AT 24.280 (09251J402)	(1,540.50)	(1,540.50)	—	—	—
12/11/24	DIVIDEND		0.0000	S&P GLOBAL INC 121124 69 (78409V104)	62.79	62.79	—	—	—
12/11/24	Cash Sweep Out		1.0000	BANK INSD DEPOSIT ACCT FDIC INSURED	—	(401.76)	—	—	—
12/11/24	BIDP Sweep In		1.0000	BANK INSD DEPOSIT ACCT FDIC INSURED	—	—	—	—	401.76
12/12/24	DIVIDEND		0.0000	MICROSOFT CORP 121224 396 (594918104)	328.68	328.68	—	—	—
12/12/24	Cash Sweep Out		1.0000	BANK INSD DEPOSIT ACCT FDIC INSURED	—	(62.79)	—	—	—
12/12/24	BIDP Sweep In		1.0000	BANK INSD DEPOSIT ACCT FDIC INSURED	—	—	—	—	62.79
12/13/24	DIVIDEND		0.0000	CSX CORP 121324 898 (126408103)	107.76	107.76	—	—	—
12/13/24	CAPITAL GAIN		0.0000	JPMORGAN MID CAP GROWTH CL I 121324 5,434.01600 (4812C1710)	19,904.85	19,904.85	—	—	—
12/13/24	REINVEST CAP	377.343	0.0000	JPMORGAN MID CAP GROWTH CL I REINVEST AT 52.750 (4812C1710)	(19,904.85)	(19,904.85)	—	—	—

Activity details (continued)

Date	Activity	Quantity	Price (\$)	Description	Total (\$)	Cash (\$)	Margin (\$)	Money Market (\$)	Bank Insured Deposit (\$)
12/13/24	DIVIDEND		0.0000	REALTY INCOME CORP 121324 1,448 (756109104)	381.55	381.55	—	—	—
12/13/24	INTEREST		0.0000	BANK INSD DEPOSIT ACCT FDIC INSURED 121324 38,312	56.14	—	—	—	56.14
12/13/24	Cash Sweep Out		1.0000	BANK INSD DEPOSIT ACCT FDIC INSURED	—	(328.68)	—	—	—
12/13/24	BIDP Sweep In		1.0000	BANK INSD DEPOSIT ACCT FDIC INSURED	—	—	—	—	328.68
12/16/24	DIVIDEND		0.0000	ALPHABET INC CL C 121624 574 (02079K107)	114.80	114.80	—	—	—
12/16/24	DIVIDEND		0.0000	MCDONALDS CORP 121624 179 (580135101)	316.83	316.83	—	—	—
12/16/24	Cash Sweep Out		1.0000	BANK INSD DEPOSIT ACCT FDIC INSURED	—	(489.31)	—	—	—
12/16/24	BIDP Sweep In		1.0000	BANK INSD DEPOSIT ACCT FDIC INSURED	—	—	—	—	489.31
12/17/24	DIVIDEND		0.0000	UNITEDHEALTH GROUP INC 121724 95 (91324P102)	199.50	199.50	—	—	—
12/17/24	Cash Sweep Out		1.0000	BANK INSD DEPOSIT ACCT FDIC INSURED	—	(431.63)	—	—	—
12/17/24	BIDP Sweep In		1.0000	BANK INSD DEPOSIT ACCT FDIC INSURED	—	—	—	—	431.63
12/18/24	ST CAP GAINS		0.0000	MFS INTL GROWTH CL I 121824 4,239.22900 (55273E848)	100.22	100.22	—	—	—
12/18/24	CAPITAL GAIN		0.0000	MFS INTL GROWTH CL I 121824 4,239.22900 (55273E848)	8,062.55	8,062.55	—	—	—
12/18/24	DIVIDEND		0.0000	MFS INTL GROWTH CL I 121824 4,239.22900 (55273E848)	2,728.24	2,728.24	—	—	—
12/18/24	REINVEST CAP	166.033	0.0000	MFS INTL GROWTH CL I REINVEST AT 48.560 (55273E848)	(8,062.55)	(8,062.55)	—	—	—

Activity details (continued)

Date	Activity	Quantity	Price (\$)	Description	Total (\$)	Cash (\$)	Margin (\$)	Money Market (\$)	Bank Insured Deposit (\$)
12/18/24	REINVEST DIV	56.183	0.0000	MFS INTL GROWTH CL I REINVEST AT 48.560 (55273E848)	(2,728.24)	(2,728.24)	—	—	—
12/18/24	REINVEST CAP	2.064	0.0000	MFS INTL GROWTH CL I REINVEST AT 48.560 (55273E848)	(100.22)	(100.22)	—	—	—
12/18/24	Cash Sweep Out		1.0000	BANK INSD DEPOSIT ACCT FDIC INSURED	—	(199.50)	—	—	—
12/18/24	BIDP Sweep In		1.0000	BANK INSD DEPOSIT ACCT FDIC INSURED	—	—	—	—	199.50
12/20/24	DIVIDEND		0.0000	ABRDN BLOOMBERG ALL COMMODITY STRATEGY K-1 FREE ETF 122024 14,470 (003261104)	9,415.34	9,415.34	—	—	—
12/20/24	DIVIDEND		0.0000	FPA NEW INCOME INSTL CL 121924 11,171.51600 (30254T643)	709.73	709.73	—	—	—
12/20/24	REINVEST DIV	72.793	0.0000	FPA NEW INCOME INSTL CL REINVEST AT 9.750 (30254T643)	(709.73)	(709.73)	—	—	—
12/20/24	DIVIDEND		0.0000	ISHARES CORE MSCI EMERGING MARKETS ETF 122024 2,092 (46434G103)	2,432.05	2,432.05	—	—	—
12/20/24	DIVIDEND		0.0000	VALERO ENERGY CORP 122024 542 (91913Y100)	579.94	579.94	—	—	—
12/23/24	DIVIDEND		0.0000	JACK HENRY & ASSOCIATES INC 122324 194 (426281101)	106.70	106.70	—	—	—
12/23/24	CAPITAL GAIN		0.0000	INTERNATIONAL GROWTH & INCOME CL F2 122324 7,791.68100 (45956T501)	2,095.96	2,095.96	—	—	—

Activity details (continued)

Date	Activity	Quantity	Price (\$)	Description	Total (\$)	Cash (\$)	Margin (\$)	Money Market (\$)	Bank Insured Deposit (\$)
12/23/24	DIVIDEND		0.0000	INTERNATIONAL GROWTH & INCOME CL F2 122324 7,791.68100 (45956T501)	1,315.24	1,315.24	—	—	—
12/23/24	REINVEST CAP	58.416	0.0000	INTERNATIONAL GROWTH & INCOME CL F2 REINVEST AT 35.880 (45956T501)	(2,095.96)	(2,095.96)	—	—	—
12/23/24	REINVEST DIV	36.657	0.0000	INTERNATIONAL GROWTH & INCOME CL F2 REINVEST AT 35.880 (45956T501)	(1,315.24)	(1,315.24)	—	—	—
12/23/24	Cash Sweep Out		1.0000	BANK INSD DEPOSIT ACCT FDIC INSURED	—	(12,427.33)	—	—	—
12/23/24	BIDP Sweep In		1.0000	BANK INSD DEPOSIT ACCT FDIC INSURED	—	—	—	—	12,427.33
12/24/24	DIVIDEND		0.0000	VANGUARD FTSE ALL WORLD EX US ETF 122424 2,889 (922042775)	2,716.53	2,716.53	—	—	—
12/24/24	Cash Sweep Out		1.0000	BANK INSD DEPOSIT ACCT FDIC INSURED	—	(106.70)	—	—	—
12/24/24	BIDP Sweep In		1.0000	BANK INSD DEPOSIT ACCT FDIC INSURED	—	—	—	—	106.70
12/26/24	PURCHASE	40	451.2648	ADOBE INC (00724F101)	(18,050.59)	(18,050.59)	—	—	—
12/26/24	SALE	(123)	227.4317	AMAZON.COM INC (023135106)	27,973.32	27,973.32	—	—	—
12/26/24	PURCHASE	6,459	25.6840	CAPITAL GROUP CORE BOND ETF (14020Y508)	(165,893.23)	(165,893.23)	—	—	—
12/26/24	PURCHASE	2,440	27.1863	CAPITAL GROUP FIXED INCOME U S MULTI SECTOR INCOME ETF (14020Y300)	(66,334.70)	(66,334.70)	—	—	—
12/26/24	SALE	(66)	364.2600	CROWDSTRIKE HOLDINGS INC CL A (22788C105)	24,040.49	24,040.49	—	—	—
12/26/24	SALE	(32)	353.4901	CUMMINS INC (231021106)	11,311.37	11,311.37	—	—	—

Activity details (continued)

Date	Activity	Quantity	Price (\$)	Description	Total (\$)	Cash (\$)	Margin (\$)	Money Market (\$)	Bank Insured Deposit (\$)
12/26/24	SALE	(73)	242.3406	JPMORGAN CHASE & CO (46625H100)	17,690.37	17,690.37	—	—	—
12/26/24	PURCHASE	130	146.0923	JOHNSON & JOHNSON (478160104)	(18,992.00)	(18,992.00)	—	—	—
12/26/24	SALE	(156)	139.4719	NVIDIA CORP (67066G104)	21,757.02	21,757.02	—	—	—
12/26/24	SALE	(36)	919.2001	NETFLIX INC (64110L106)	33,090.28	33,090.28	—	—	—
12/26/24	PURCHASE	3,007	55.2496	PACER TRENDPILOT US LARGE CAP ETF (69374H105)	(166,135.55)	(166,135.55)	—	—	—
12/26/24	PURCHASE	260	106.7654	PROLOGIS INC (74340W103)	(27,759.00)	(27,759.00)	—	—	—
12/26/24	SALE	(13)	1,101.0572	SERVICENOW INC (81762P102)	14,313.34	14,313.34	—	—	—
12/26/24	PURCHASE	1,078	61.6177	UBER TECHNOLOGIES INC (90353T100)	(66,423.88)	(66,423.88)	—	—	—
12/26/24	SALE	(95)	509.7985	UNITEDHEALTH GROUP INC (91324P102)	48,429.51	48,429.51	—	—	—
12/26/24	PURCHASE	289	119.5960	VALERO ENERGY CORP (91913Y100)	(34,563.24)	(34,563.24)	—	—	—
12/26/24	DIVIDEND		0.0000	VANGUARD S&P MID CAP 400 INDEX ETF 122624 2,067 (921932885)	845.61	845.61	—	—	—
12/26/24	SALE	(110,580)	1.0000	VANGUARD FEDERAL MONEY MARKET INVESTOR CL (922906300)	110,580.00	110,580.00	—	—	—
12/26/24	SALE	(4,411)	55.3760	VANGUARD LONG TERM TREASURY ETF (92206C847)	244,256.75	244,256.75	—	—	—
12/26/24	DIVIDEND		0.0000	VANGUARD RUSSELL 2000 INDEX FD ETF SHARES 122624 2,786 (92206C664)	923.28	923.28	—	—	—
12/26/24	DIVIDEND		0.0000	VANGUARD S&P 500 INDEX ETF 122624 1,147 (922908363)	1,994.06	1,994.06	—	—	—

Activity details (continued)

Date	Activity	Quantity	Price (\$)	Description	Total (\$)	Cash (\$)	Margin (\$)	Money Market (\$)	Bank Insured Deposit (\$)
12/26/24	DIVIDEND		0.0000	VANGUARD REAL ESTATE INDEX ETF 122624 2,633 (922908553)	2,252.53	2,252.53	—	—	—
12/26/24	PURCHASE	56	165.5702	ZOETIS INC CL A (98978V103)	(9,271.93)	(9,271.93)	—	—	—
12/26/24	Cash Sweep Out		1.0000	BANK INSD DEPOSIT ACCT FDIC INSURED	—	(2,716.53)	—	—	—
12/26/24	BIDP Sweep In		1.0000	BANK INSD DEPOSIT ACCT FDIC INSURED	—	—	—	—	2,716.53
12/27/24	DIVIDEND		0.0000	NVIDIA CORP 122724 1,110 (67066G104)	11.10	11.10	—	—	—
12/27/24	DIVIDEND		0.0000	VANGUARD LONG TERM TREASURY ETF 122724 4,411 (92206C847)	915.28	915.28	—	—	—
12/27/24	BIDP Sweep Out		1.0000	BANK INSD DEPOSIT ACCT FDIC INSURED	—	—	—	—	(13,966.19)
12/27/24	Cash Sweep In		1.0000	BANK INSD DEPOSIT ACCT FDIC INSURED	—	13,966.19	—	—	—
12/30/24	DIVIDEND		0.0000	JPMORGAN CORE PLUS BOND CL I 123024 7,708.00700 (4812C0845)	225.15	225.15	—	—	—
12/30/24	REINVEST DIV	31.756	0.0000	JPMORGAN CORE PLUS BOND CL I REINVEST AT 7.090 (4812C0845)	(225.15)	(225.15)	—	—	—
12/30/24	Cash Sweep Out		1.0000	BANK INSD DEPOSIT ACCT FDIC INSURED	—	(926.38)	—	—	—
12/30/24	BIDP Sweep In		1.0000	BANK INSD DEPOSIT ACCT FDIC INSURED	—	—	—	—	926.38
12/31/24	DIVIDEND		0.0000	BROADCOM INC 123124 571 (11135F101)	336.89	336.89	—	—	—

Activity details (continued)

Date	Activity	Quantity	Price (\$)	Description	Total (\$)	Cash (\$)	Margin (\$)	Money Market (\$)	Bank Insured Deposit (\$)
12/31/24	DIVIDEND		0.0000	PROLOGIS INC 123124 675 (74340W103)	648.00	648.00	—	—	—
12/31/24	INTEREST		0.0000	BANK INSD DEPOSIT ACCT FDIC INSURED 123124 41,679	35.88	—	—	—	35.88
				Totals	42,664.54	984.89	—	—	41,679.65

Bank Insured Deposit Program

Program Balances	Current Value (\$)	Program Balances	Current Value (\$)
Bank of Baroda	41,679.65		
Total BIDP Deposits			41,679.65

As of the end of the period covered by this statement you had funds in the amounts and at the bank(s)/money market fund shown above relating to the Bank Insured Deposit Program (BIDP). For other information relating to the BIDP, see the Cash and Cash Equivalent information on page two of this statement for the interest rate earned during the period and the activity details section of this statement for the total interest earned and credited during the period. Funds held in the banks shown above are obligations of those banks and not of D.A. Davidson & Co. Funds held at a money market fund are obligations of the Fund Company and not of D.A. Davidson & Co. Funds held at banks in the BIDP are eligible for insurance to applicable limits by the Federal Deposit Insurance Corporation (FDIC), provided that any additional funds above such deposit limits will be deposited in an account at a designated money market fund. BIDP account funds swept to banks are not protected by Securities Investor Protection Corporation (SIPC). Excess funds swept to a money market fund are subject to SIPC protection. More information about D.A. Davidson's BIDP and applicable limits may be obtained at www.dadavidson.com/bidp. Questions about the BIDP or your balances and account activity in the BIDP should be directed to your Financial Professional.

Below is a full list of banks in the Bank Insured Deposit Program (BIDP) including banks leaving or joining the program. To see which banks are available to your account and the order in which funds are placed in the banks, you will find the most current list at this link: (dadavidson.com/Portals/0/bus-wm/bank%20list/priority_bank_list.pdf)

Bank of Baroda	Bank of East Asia Ltd	Bank of India	C3bank NA
Cadence Bank	East West Bank	First Internet Bank of Indiana	Glacier Bank
Goldman Sachs Bank USA	HSBC Bank USA NA	Merrick Bank	Morgan Stanley Bank NA
Morgan Stanley Private Bank	SMBC Manubank	State Bank of India	Synovus Bank
Toyota Financial Savings Bank	TriState Capital Bank	Truist Bank	Umpqua Bank
US Bank NA	Valley National Bank	WEX Bank	

Banks Entering Program

Bank of New York Mellon

Trusted Contact

Name	Phone
Please Provide	Please Provide

If no Trusted Contact information is listed, or the information on file has changed, please contact your Financial Professional.
By providing information about trusted contact person(s), you authorize us to contact the trusted contact person(s) and disclose information about your account to those person(s) in the following circumstances: To address possible financial exploitation, to confirm the specifics of your current contact information, health status, or the identity of any legal guardian, executor, trustee or holder of a power of attorney, or as otherwise permitted by FINRA Rule 2165 (Financial Exploitation of Specified Adults). This designation does not provide trading authority or the ability to act as attorney-in-fact. Please note, your trusted contact must be 18 years or older, cannot be an owner, trustee or attorney-in-fact on the account, or your Financial Professional.

*** END OF STATEMENT ***

Your Monthly Portfolio Statement

December 1, 2024 - December 31, 2024

SCMHF Operating Fund



401 North 31st Street
P. O. Box 30918
Billings, MT 59101-0918

Table of Contents

Overview of Your Account.....	3
Your Asset Summary.....	4
Portfolio Holdings.....	5
Your Transaction Detail.....	7
Information.....	10

IMPORTANT TAX INFORMATION

“Return of Capital” (ROC) distributions are reported on a Form 1099-DIV and provided by our tax vendors. These forms must be mailed to all clients by February 18, 2025. First Interstate Wealth Management secured a 30-day extension on this deadline; as such, all required forms will be provided to clients by March 17, 2025.

The extension gives us the opportunity to work with outside vendors throughout the month of February to identify all investments that received ROC distributions during the year, allowing for account and cost basis adjustments.

What is “Return of Capital”?

ROC is a non-dividend distribution, or a payment from a security to an investor from funds that were not derived from income. Throughout the year, dividends are posted to your account as income. At year-end, the fund company classifies certain dividends as ROC, which requires adjustments to affected accounts. The received ROC distribution reduces the investor’s adjusted-cost basis and is not taxed as income for the current year. Once the fund’s adjusted-cost basis has been reduced to zero, any subsequent return will be taxable as a capital gain.

If you have questions, please contact your Wealth Advisor or Trust Specialist.

Your Wealth Management Team Contacts

Wealth Advisor: Robert L Leibrich 307-672-1494 robert.leibrich@fib.com

Accounts Included In This Statement

xxxxx4502 SCMHF Operating Fund

Amber Quarterman

Mohatt Johnson & Godwin, LLP
352 Whittney Lane
PO Box 603
Sheridan, WY 82801
United States

This page intentionally left blank.

Overview of Your Account - xxxxx4502 SCMHF Operating Fund

Investment Objective: Strategic - Fixed Income Only

Activity Summary

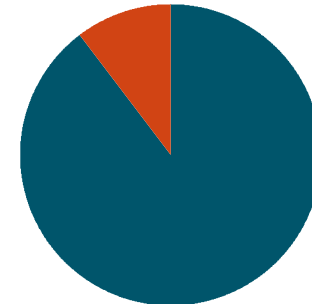
	This Period (\$)	Year to Date (\$)
Beginning Market Value	900,858.64	1,095,503.95
Cash and security transfers	0.00	105,490.00
Contributions	150,600.00	150,600.00
Income & Capital Gain Distributions	5,934.76	46,437.31
Withdrawals and fees	-437.76	-345,410.65
Change in Account Value	-20,117.22	-15,782.19
Market Value on Dec 31, 2024	\$1,036,838.42	\$1,036,838.42

Income Earned

	This Period (\$)	Year to Date (\$)
Taxable Income	5,934.76	46,437.31
Tax-Exempt Income	0.00	0.00
Tax-Deferred Income	0.00	0.00
Total Income Earned	\$5,934.76	\$46,437.31
Total Short Term Realized Capital Gain/Loss	\$0.00	-\$157.67
Total Long Term Realized Capital Gain/Loss	\$0.00	-\$5,386.64
Total Realized Capital Gain/Loss	\$0.00	-\$5,544.31

Asset Allocation on December 31, 2024

	Market Value (\$)	Percent
■ Fixed Income	929,500.16	90%
■ Cash & Cash Equivalents	107,338.26	10%
Total of Your Account	\$1,036,838.42	100%



Your Asset Summary on December 31, 2024

	Market Value	Cost Basis	Unrealized Gain or Loss	Estimated Annual Income	Yield at Market	% of Account
xxxxx4502 SCMHF Operating Fund						
Cash & Cash Equivalents	107,338.26	106,840.87	0.00	4,849.51	4.54%	10.35%
xxxxx4502 SCMHF Operating Fund						
Fixed Income						
US Treasuries	374,199.90	382,460.54	-8,260.64	14,196.91	3.79%	36.10%
TIPs	34,149.50	34,198.10	-48.60	915.62	2.68%	3.29%
Mortgage Backed Securities	238,001.26	240,050.44	-2,049.18	11,116.67	4.67%	22.95%
Corporate Bonds	229,973.55	234,644.47	-4,670.92	10,185.08	4.43%	22.18%
High Yield	53,175.95	51,333.95	1,564.42	3,700.54	7.00%	5.13%
Fixed Income	\$929,500.16	\$942,687.50	-\$13,464.92	\$40,114.82	4.32%	89.65%
xxxxx4502 SCMHF Operating Fund	\$1,036,838.42	\$1,049,528.37	-\$13,464.92	\$44,964.33	4.34%	100.00%

Portfolio Holdings on December 31, 2024

	Number of Shares	Share price	Market Value	Accrued Income	Cost Basis / Unrealized G/L	Est. Ann. Inc. /Yield at Market	% of Account
xxxxx4502 SCMHF Operating Fund							
Cash & Cash Equivalents							
Federated Hermes Government Obligations Fund (TICKER: GOFXX - CUSIP:608919718)	106,840.87	1.00	106,840.87	497.39	106,840.87 0.00	4,849.51 4.54%	10.35%
Total Cash & Cash Equivalents			\$106,840.87	\$497.39	\$106,840.87 \$0.00	\$4,849.51 4.54%	10.35%
Fixed Income							
US Treasuries							
iShares 20+ Year Treasury Bond ETF (TICKER: TLT - CUSIP:464287432)	830.00	87.33	72,483.90	0.00	78,408.73 -5,924.83	3,116.65 4.30%	6.99%
Vanguard Intermediate-Term Treasury ETF (TICKER: VGIT - CUSIP:92206C706)	5,202.00	58.00	301,716.00	0.00	304,051.81 -2,335.81	11,080.26 3.67%	29.11%
Total US Treasuries			\$374,199.90	\$0.00	\$382,460.54 -\$8,260.64	\$14,196.91 3.79%	36.10%
TIPs							
Vanguard Short-Term Inflation-Protected Securities Index Fund (TICKER: VTAPX - CUSIP:922020706)	1,406.487	24.28	34,149.50	0.00	34,198.10 -48.60	915.62 2.68%	3.29%
Total TIPs			\$34,149.50	\$0.00	\$34,198.10 -\$48.60	\$915.62 2.68%	3.29%
Mortgage Backed Securities							
DoubleLine Total Return Bond Fund (TICKER: DBLTX - CUSIP:258620103)	18,377.896	8.67	159,336.36	0.00	160,638.73 -1,302.37	8,012.76 5.03%	15.36%
Vanguard Mortgage-Backed Securities ETF (TICKER: VMBS - CUSIP:92206C771)	1,735.00	45.34	78,664.90	0.00	79,411.71 -746.81	3,103.91 3.95%	7.59%
Total Mortgage Backed Securities			\$238,001.26	\$0.00	\$240,050.44 -\$2,049.18	\$11,116.67 4.67%	22.95%

Portfolio Holdings on December 31, 2024 (continued)

	Number of Shares	Share price	Market Value	Accrued Income	Cost Basis / Unrealized G/L	Est. Ann. Inc. /Yield at Market	% of Account
xxxxx4502 SCMHF Operating Fund (continued)							
Fixed Income (continued)							
<i>Corporate Bonds</i>							
Vanguard Intermediate-Term Corporate Bond ETF (TICKER: VCIT - CUSIP:92206C870)	2,865.00	80.27	229,973.55	0.00	234,644.47 -4,670.92	10,185.08 4.43%	22.18%
Total Corporate Bonds			\$229,973.55	\$0.00	\$234,644.47 -\$4,670.92	\$10,185.08 4.43%	22.18%
<i>High Yield</i>							
Artisan High Income Fund (TICKER: APHFX - CUSIP:04314H568)	3,762.573	9.10	34,239.41	188.04	33,223.63 1,015.78	2,547.26 7.44%	3.32%
Vanguard High-Yield Corporate Fund (TICKER: VWEAX - CUSIP:922031760)	3,442.612	5.42	18,658.96	89.54	18,110.32 548.64	1,153.28 6.18%	1.81%
Total High Yield			\$52,898.37	\$277.58	\$51,333.95 \$1,564.42	\$3,700.54 7.00%	5.13%
Total Fixed Income			\$929,222.58	\$277.58	\$942,687.50 -\$13,464.92	\$40,114.82 4.32%	89.65%
Total xxxxx4502 SCMHF Operating Fund			\$1,036,063.45	\$774.97	\$1,049,528.37 -\$13,464.92	\$44,964.33 4.34%	100.00%

Your Transaction Detail

Trade Date	Transaction Description	Amount	Accrued Income	Realized G/L
xxxxx4502 SCMHF Operating Fund				
Receipts				
<i>Contributions</i>				
December 11, 2024	Cash Receipt via ACH, Received From Memorial Hosp of Sheridan Co , To correct transfer of interest income from FFBT deposited to SMH in error	150,000.00		0.00
Total Contributions		\$150,000.00	\$0.00	\$0.00
<i>Cash Transfers</i>				
December 16, 2024	Cash Transfer - Miscellaneous Receipt From G055F01 FIWM Adjustment Acct - Cash G055F01 (Capital), 100104502 SCMHF Operating Fund Reimbursement, Spot Currency USD	600.00		0.00
Total Cash Transfers		\$600.00	\$0.00	\$0.00
Total Receipts		\$150,600.00	\$0.00	\$0.00
Disbursements				
<i>Fees</i>				
December 26, 2024	Periodic Fee: Taken Monthly \$437.76 (11/16/24 to 12/15/24) Flat Percentage Fee: \$437.76 Based on Average Daily Market Value of \$3,057,955.14 @ an annual rate of 1.00% = \$30,579.55. Monthly Fee: \$2,548.30. Discount of \$1,095.77 applied (based on a rate of 43.00%). Account 100104502: \$437.76. Charged now \$437.76. Note: Fee is computed based on all accounts in the fee group. The remainder of the fee may be collected from other accounts in the fee group.	-437.76		0.00
Total Fees		-\$437.76	\$0.00	\$0.00
Total Disbursements		-\$437.76	\$0.00	\$0.00
Corporate Actions/Income				
<i>Dividends</i>				
November 29, 2024	Cash Dividend 0.03473659 USD DoubleLine Total Return Bond Fund For 15,506.896 Units Due on 11/29/24 With Ex Date 11/29/24, CUSIP 258620103, TICKER DBLTX	538.66		0.00
December 2, 2024	Daily Rate Income on Vanguard High-Yield Corporate Fund For Period of 11/01/24 to 11/30/24 Due on 12/02/24, CUSIP 922031760, TICKER VWEAX	83.52		0.00
December 2, 2024	Daily Rate Income on Federated Hermes Government Obligations Fund For Period of 11/01/24 to 11/30/24 Due on 12/02/24, CUSIP 608919718, TICKER GOFXX	361.74		0.00

Your Transaction Detail (continued)

Trade Date	Transaction Description	Amount	Accrued Income	Realized G/L
xxxxx4502 SCMHF Operating Fund (Continued)				
Corporate Actions/Income (Continued)				
<i>Dividends (Continued)</i>				
December 2, 2024	Daily Rate Income on Artisan High Income Fund For Period of 11/01/24 to 11/30/24 Due on 12/02/24, CUSIP 04314H568, TICKER APHFX	173.52		0.00
December 4, 2024	Cash Dividend 0.1504 USD Vanguard Mortgage-Backed Securities ETF For 1,470.00 Shares Due on 12/04/24 With Ex Date 12/02/24, CUSIP 92206C771, TICKER VMBS	221.09		0.00
December 4, 2024	Cash Dividend 0.1817 USD Vanguard Intermediate-Term Treasury ETF For 4,403.00 Shares Due on 12/04/24 With Ex Date 12/02/24, CUSIP 92206C706, TICKER VGIT	800.03		0.00
December 4, 2024	Cash Dividend 0.2992 USD Vanguard Intermediate-Term Corporate Bond ETF For 2,433.00 Shares Due on 12/04/24 With Ex Date 12/02/24, CUSIP 92206C870, TICKER VCIT	727.95		0.00
December 5, 2024	Cash Dividend 0.325021 USD iShares 20+ Year Treasury Bond ETF For 673.00 Shares Due on 12/05/24 With Ex Date 12/02/24, CUSIP 464287432, TICKER TLT	218.74		0.00
December 23, 2024	Cash Dividend 0.351032 USD iShares 20+ Year Treasury Bond ETF For 830.00 Shares Due on 12/23/24 With Ex Date 12/18/24, CUSIP 464287432, TICKER TLT	291.36		0.00
December 24, 2024	Cash Dividend 0.2642 USD Vanguard Short-Term Inflation-Protected Securities Index Fund For 1,406.487 Units Due on 12/24/24 With Ex Date 12/23/24, CUSIP 922020706, TICKER VTAPX	371.59		0.00
December 27, 2024	Cash Dividend 0.3119 USD Vanguard Intermediate-Term Corporate Bond ETF For 2,865.00 Shares Due on 12/27/24 With Ex Date 12/24/24, CUSIP 92206C870, TICKER VCIT	893.59		0.00
December 27, 2024	Cash Dividend 0.1901 USD Vanguard Intermediate-Term Treasury ETF For 5,202.00 Shares Due on 12/27/24 With Ex Date 12/24/24, CUSIP 92206C706, TICKER VGIT	988.90		0.00
December 27, 2024	Cash Dividend 0.1522 USD Vanguard Mortgage-Backed Securities ETF For 1,735.00 Shares Due on 12/27/24 With Ex Date 12/24/24, CUSIP 92206C771, TICKER VMBS	264.07		0.00
Total Dividends		\$5,934.76	\$0.00	\$0.00
Total Corporate Actions/Income		\$5,934.76	\$0.00	\$0.00

Your Transaction Detail (continued)

Trade Date	Transaction Description	Amount	Accrued Income	Realized G/L
xxxxx4502 SCMHF Operating Fund (Continued)				
Purchases				
December 17, 2024	Purchase 432.00 Shares of Vanguard Intermediate-Term Corporate Bond ETF @ \$81.3783, Paid \$8.64 Broker Commission, CUSIP 92206C870, TICKER VCIT	-35,164.07		0.00
December 17, 2024	Purchase 157.00 Shares of iShares 20+ Year Treasury Bond ETF @ \$90.7783, Paid \$3.14 Broker Commission, CUSIP 464287432, TICKER TLT	-14,255.33		0.00
December 17, 2024	Purchase 265.00 Shares of Vanguard Mortgage-Backed Securities ETF @ \$45.8183, Paid \$5.30 Broker Commission, CUSIP 92206C771, TICKER VMBS	-12,147.15		0.00
December 17, 2024	Purchase 799.00 Shares of Vanguard Intermediate-Term Treasury ETF @ \$58.4883, Paid \$15.98 Broker Commission, CUSIP 92206C706, TICKER VGIT	-46,748.13		0.00
December 17, 2024	Purchase 486.119 Units of Artisan High Income Fund @ \$9.16, CUSIP 04314H568, TICKER APHFX	-4,452.86		0.00
December 17, 2024	Purchase 2,871.00 Units of DoubleLine Total Return Bond Fund @ \$8.76, CUSIP 258620103, TICKER DBLTX	-25,149.96		0.00
December 18, 2024	Purchase 467.623 Units of Vanguard High-Yield Corporate Fund @ \$5.44, CUSIP 922031760, TICKER VWEAX	-2,543.87		0.00
December 18, 2024	Purchase 181.90 Units of Vanguard Short-Term Inflation-Protected Securities Index Fund @ \$24.48, CUSIP 922020706, TICKER VTAPX	-4,452.90		0.00
Total Purchases		-\$144,914.27	\$0.00	\$0.00
Cash Sweep Activity				
December 31, 2024	Sweep sales totaling -145,643.36 units of Federated Hermes Government Obligations Fund for Main (Capital) (4 Transactions)	145,643.36		0.00
December 31, 2024	Sweep purchases totaling 156,826.09 units of Federated Hermes Government Obligations Fund for Main (Capital) (13 Transactions)	-156,826.09		0.00
Total Cash Sweep Activity		-\$11,182.73	\$0.00	\$0.00
Total xxxxx4502 SCMHF Operating Fund		\$0.00	\$0.00	\$0.00

Information

Positions on this statement are shown as of the trade date. Proceeds from the sale of securities and costs for the purchase of securities are not transacted through your account until the actual settlement date of the trade which may be up to three business days after the trade date or longer for certain securities with an extended settlement date. All cash activity will be shown as of the settlement date.

Privacy Statement

Federal law requires us to tell you how we collect, share, and protect your personal information. Our privacy policy has not changed and you may review our policy and practices with respect to your personal information at <https://www.firstinterstatebank.com/support/disclosures/privacy.html> or we will mail you a free copy upon request if you call us at 1-888-752-3332.

Your Monthly Portfolio Statement

December 1, 2024 - December 31, 2024

SCMHF Unrestricted Fund



401 North 31st Street
P. O. Box 30918
Billings, MT 59101-0918

Table of Contents

Overview of Your Account.....	3
Your Asset Summary.....	4
Portfolio Holdings.....	5
Your Transaction Detail.....	12
Information.....	18

IMPORTANT TAX INFORMATION

“Return of Capital” (ROC) distributions are reported on a Form 1099-DIV and provided by our tax vendors. These forms must be mailed to all clients by February 18, 2025. First Interstate Wealth Management secured a 30-day extension on this deadline; as such, all required forms will be provided to clients by March 17, 2025.

The extension gives us the opportunity to work with outside vendors throughout the month of February to identify all investments that received ROC distributions during the year, allowing for account and cost basis adjustments.

What is “Return of Capital”?

ROC is a non-dividend distribution, or a payment from a security to an investor from funds that were not derived from income. Throughout the year, dividends are posted to your account as income. At year-end, the fund company classifies certain dividends as ROC, which requires adjustments to affected accounts. The received ROC distribution reduces the investor’s adjusted-cost basis and is not taxed as income for the current year. Once the fund’s adjusted-cost basis has been reduced to zero, any subsequent return will be taxable as a capital gain.

If you have questions, please contact your Wealth Advisor or Trust Specialist.

Your Wealth Management Team Contacts

Wealth Advisor: Robert L Leibrich 307-672-1494 robert.leibrich@fib.com
Trust Specialist: Kathy Owen 307-672-1493 Kathy.owen@fib.com

Accounts Included In This Statement

xxxx4790 SCMHF Unrestricted Fund

Everett Mohatt
PO Box 603
Sheridan, WY 82801
United States

This page intentionally left blank.

Overview of Your Account - xxxx4790 SCMHF Unrestricted Fund

Investment Objective: Tactical - High Growth

Activity Summary

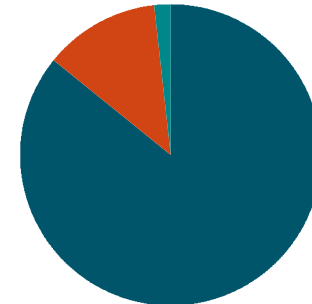
	This Period (\$)	Year to Date (\$)
Beginning Market Value	2,145,179.94	1,977,032.59
Cash and security transfers	0.00	-99,618.75
Contributions	0.00	37.92
Income & Capital Gain Distributions	18,276.67	49,333.09
Withdrawals and fees	-1,014.77	-17,638.90
Change in Account Value	-74,367.24	178,928.65
Market Value on Dec 31, 2024	\$2,088,074.60	\$2,088,074.60

Income Earned

	This Period (\$)	Year to Date (\$)
Taxable Income	18,276.67	49,333.09
Tax-Exempt Income	0.00	0.00
Tax-Deferred Income	0.00	0.00
Total Income Earned	\$18,276.67	\$49,333.09
Total Short Term Realized Capital Gain/Loss	\$0.00	\$4,985.78
Total Long Term Realized Capital Gain/Loss	\$0.00	\$23,449.83
Total Realized Capital Gain/Loss	\$0.00	\$28,435.61

Asset Allocation on December 31, 2024

	Market Value (\$)	Percent
■ Equity	1,792,129.48	86%
■ Fixed Income	258,000.10	12%
■ Cash & Cash Equivalents	37,945.02	2%
Total of Your Account	\$2,088,074.60	100%



Your Asset Summary on December 31, 2024

	Market Value	Cost Basis	Unrealized Gain or Loss	Estimated Annual Income	Yield at Market	% of Account
xxxx4790 SCMHF Unrestricted Fund						
Cash & Cash Equivalents	37,945.02	37,844.21	0.00	1,717.75	4.54%	1.82%
xxxx4790 SCMHF Unrestricted Fund						
Fixed Income						
US Treasuries	5,452.00	5,484.72	-32.72	200.22	3.67%	0.26%
Mortgage Backed Securities	60,154.09	61,652.75	-1,498.66	2,778.04	4.62%	2.88%
Corporate Bonds	117,153.08	117,547.40	-394.32	5,525.27	4.72%	5.62%
High Yield	63,671.01	61,359.58	1,950.26	4,453.44	7.03%	3.05%
Preferred Stock	11,569.92	11,569.22	0.70	730.85	6.32%	0.55%
Fixed Income	\$258,000.10	\$257,613.67	\$25.26	\$13,687.82	5.31%	12.36%
Equity						
International - Developed	395,882.74	337,544.07	58,338.67	12,571.93	3.18%	18.96%
International - Emerging Mkts	225,995.03	207,307.39	18,687.64	6,040.43	2.67%	10.82%
US Large Cap Equities	1,090,241.06	752,168.63	337,863.89	15,457.65	1.42%	52.21%
US Small/Mid Cap Equities	80,010.65	64,622.33	15,388.32	1,233.06	1.54%	3.83%
Equity	\$1,792,129.48	\$1,361,642.42	\$430,278.52	\$35,303.07	1.97%	85.82%
xxxx4790 SCMHF Unrestricted Fund	\$2,088,074.60	\$1,657,100.30	\$430,303.78	\$50,708.64	2.43%	100.00%

Portfolio Holdings on December 31, 2024

	Number of Shares	Share price	Market Value	Accrued Income	Cost Basis / Unrealized G/L	Est. Ann. Inc. /Yield at Market	% of Account
xxxx4790 SCMHF Unrestricted Fund							
Cash & Cash Equivalents							
Federated Hermes Government Obligations Fund (TICKER: GOFXX - CUSIP:608919718)	37,844.21	1.00	37,844.21	100.81	37,844.21 0.00	1,717.75 4.54%	1.82%
Total Cash & Cash Equivalents			\$37,844.21	\$100.81	\$37,844.21 \$0.00	\$1,717.75 4.54%	1.82%
Fixed Income							
US Treasuries							
Vanguard Intermediate-Term Treasury ETF (TICKER: VGIT - CUSIP:92206C706)	94.00	58.00	5,452.00	0.00	5,484.72 -32.72	200.22 3.67%	0.26%
Total US Treasuries			\$5,452.00	\$0.00	\$5,484.72 -\$32.72	\$200.22 3.67%	0.26%
Mortgage Backed Securities							
DoubleLine Total Return Bond Fund (TICKER: DBLTX - CUSIP:258620103)	4,307.736	8.67	37,348.07	0.00	38,732.00 -1,383.93	1,878.17 5.03%	1.79%
Vanguard Mortgage-Backed Securities ETF (TICKER: VMBS - CUSIP:92206C771)	503.00	45.34	22,806.02	0.00	22,920.75 -114.73	899.87 3.95%	1.09%
Total Mortgage Backed Securities			\$60,154.09	\$0.00	\$61,652.75 -\$1,498.66	\$2,778.04 4.62%	2.88%
Corporate Bonds							
iShares iBonds Dec 2032 Term Corporate ETF (TICKER: IBDX - CUSIP:46436E312)	1,161.00	24.58	28,537.38	0.00	28,659.29 -121.91	1,433.83 5.02%	1.37%
iShares iBonds Dec 2033 Term Corporate ETF (TICKER: IBDY - CUSIP:46436E130)	1,132.00	25.10	28,413.20	0.00	28,639.60 -226.40	1,425.19 5.02%	1.36%

Portfolio Holdings on December 31, 2024 (continued)

	Number of Shares	Share price	Market Value	Accrued Income	Cost Basis / Unrealized G/L	Est. Ann. Inc. /Yield at Market	% of Account
xxx4790 SCMHF Unrestricted Fund (continued)							
Fixed Income (continued)							
<i>Corporate Bonds (continued)</i>							
Vanguard Intermediate-Term Corporate Bond ETF (TICKER: VCIT - CUSIP:92206C870)	750.00	80.27	60,202.50	0.00	60,248.51 -46.01	2,666.25 4.43%	2.89%
Total Corporate Bonds			\$117,153.08	\$0.00	\$117,547.40 -\$394.32	\$5,525.27 4.72%	5.62%
<i>High Yield</i>							
Artisan High Income Fund (TICKER: APHFX - CUSIP:04314H568)	4,717.555	9.10	42,929.75	255.00	41,393.11 1,536.64	3,193.78 7.44%	2.07%
Vanguard High-Yield Corporate Fund (TICKER: VWEAX - CUSIP:922031760)	3,760.165	5.42	20,380.09	106.17	19,966.47 413.62	1,259.66 6.18%	0.98%
Total High Yield			\$63,309.84	\$361.17	\$61,359.58 \$1,950.26	\$4,453.44 7.03%	3.05%
<i>Preferred Stock</i>							
iShares Preferred and Income Securities ETF (TICKER: PFF - CUSIP:464288687)	368.00	31.44	11,569.92	0.00	11,569.22 0.70	730.85 6.32%	0.55%
Total Preferred Stock			\$11,569.92	\$0.00	\$11,569.22 \$0.70	\$730.85 6.32%	0.55%
Total Fixed Income			\$257,638.93	\$361.17	\$257,613.67 \$25.26	\$13,687.82 5.31%	12.36%
Equity							
<i>International - Developed</i>							
Fidelity International Index Fund (TICKER: FSPSX - CUSIP:315911727)	3,951.083	47.54	187,834.49	0.00	156,988.20 30,846.29	6,147.88 3.27%	9.00%

Portfolio Holdings on December 31, 2024 (continued)

	Number of Shares	Share price	Market Value	Accrued Income	Cost Basis / Unrealized G/L	Est. Ann. Inc. /Yield at Market	% of Account
xxx4790 SCMHF Unrestricted Fund (continued)							
Equity (continued)							
<i>International - Developed (continued)</i>							
iShares Currency Hedged MSCI EAFE ETF (TICKER: HEFA - CUSIP:46434V803)	5,987.00	34.75	208,048.25	0.00	180,555.87 27,492.38	6,424.05 3.09%	9.95%
Total International - Developed			\$395,882.74	\$0.00	\$337,544.07 \$58,338.67	\$12,571.93 3.18%	18.96%
<i>International - Emerging Mkts</i>							
DFA Emerging Markets Small Cap Portfolio (TICKER: DEMSX - CUSIP:233203611)	1,748.117	23.21	40,573.80	0.00	36,968.06 3,605.74	2,122.21 5.23%	1.94%
Fidelity Emerging Markets Index Fund (TICKER: FPADX - CUSIP:316146331)	9,872.623	10.46	103,267.64	0.00	95,114.29 8,153.35	2,784.08 2.70%	4.94%
Goldman Sachs Emerging Markets Equity Insights Fund (TICKER: GERIX - CUSIP:38144N569)	9,530.579	8.62	82,153.59	0.00	75,225.04 6,928.55	1,134.14 1.38%	3.93%
Total International - Emerging Mkts			\$225,995.03	\$0.00	\$207,307.39 \$18,687.64	\$6,040.43 2.67%	10.82%
<i>US Large Cap Equities</i>							
Abbott Laboratories (TICKER: ABT - CUSIP:002824100)	32.00	113.11	3,619.52	0.00	2,778.36 841.16	75.52 2.09%	0.17%
Alphabet Inc (TICKER: GOOGL - CUSIP:02079K305)	109.00	189.30	20,633.70	0.00	5,260.34 15,373.36	87.20 0.42%	0.99%
Amazon.com Inc (TICKER: AMZN - CUSIP:023135106)	124.00	219.39	27,204.36	0.00	11,665.89 15,538.47	0.00	1.30%
American Express Co (TICKER: AXP - CUSIP:025816109)	44.00	296.79	13,058.76	0.00	4,322.40 8,736.36	123.20 0.94%	0.63%
Apple Inc (TICKER: AAPL - CUSIP:037833100)	105.00	250.42	26,294.10	0.00	6,703.80 19,590.30	105.00 0.40%	1.26%

Portfolio Holdings on December 31, 2024 (continued)

	Number of Shares	Share price	Market Value	Accrued Income	Cost Basis / Unrealized G/L	Est. Ann. Inc. /Yield at Market	% of Account
xxxx4790 SCMHF Unrestricted Fund (continued)							
Equity (continued)							
<i>US Large Cap Equities (continued)</i>							
Berkshire Hathaway Inc (TICKER: BRK/B - CUSIP:084670702)	31.00	453.28	14,051.68	0.00	4,901.87 9,149.81	0.00	0.67%
Blackstone Inc (TICKER: BX - CUSIP:09260D107)	71.00	172.42	12,241.82	0.00	5,864.11 6,377.71	107.07 0.87%	0.59%
Bristol-Myers Squibb Co (TICKER: BMY - CUSIP:110122108)	97.00	56.56	5,486.32	0.00	5,180.90 305.42	240.56 4.38%	0.26%
Cisco Systems Inc (TICKER: CSCO - CUSIP:17275R102)	270.00	59.20	15,984.00	0.00	10,579.71 5,404.29	432.00 2.70%	0.77%
Citigroup Inc (TICKER: C - CUSIP:172967424)	94.00	70.39	6,616.66	0.00	6,878.33 -261.67	210.56 3.18%	0.32%
Communication Services Select Sector SPDR Fund (TICKER: XLC - CUSIP:81369Y852)	149.00	96.81	14,424.69	0.00	8,475.26 5,949.43	143.34 0.99%	0.69%
Consumer Discretionary Select Sector SPDR Fund (TICKER: XLY - CUSIP:81369Y407)	17.00	224.35	3,813.95	0.00	2,603.54 1,210.41	27.49 0.72%	0.18%
Consumer Staples Select Sector SPDR Fund (TICKER: XLP - CUSIP:81369Y308)	101.00	78.61	7,939.61	0.00	6,457.16 1,482.45	219.68 2.77%	0.38%
Costco Wholesale Corp (TICKER: COST - CUSIP:22160K105)	10.00	916.27	9,162.70	0.00	3,486.82 5,675.88	46.40 0.51%	0.44%
Emerson Electric Co (TICKER: EMR - CUSIP:291011104)	44.00	123.93	5,452.92	0.00	3,240.96 2,211.96	92.84 1.70%	0.26%
Energy Select Sector SPDR Fund (TICKER: XLE - CUSIP:81369Y506)	285.00	85.66	24,413.10	0.00	11,780.40 12,632.70	819.66 3.36%	1.17%
FedEx Corp (TICKER: FDX - CUSIP:31428X106)	10.00	281.33	2,813.30	13.80	2,536.20 277.10	55.20 1.96%	0.14%

Portfolio Holdings on December 31, 2024 (continued)

	Number of Shares	Share price	Market Value	Accrued Income	Cost Basis / Unrealized G/L	Est. Ann. Inc. /Yield at Market	% of Account
xxxx4790 SCMHF Unrestricted Fund (continued)							
Equity (continued)							
<i>US Large Cap Equities (continued)</i>							
Financial Select Sector SPDR Fund (TICKER: XLF - CUSIP:81369Y605)	225.00	48.33	10,874.25	0.00	8,991.07 1,883.18	154.57 1.42%	0.52%
Health Care Select Sector SPDR Fund (TICKER: XLV - CUSIP:81369Y209)	182.00	137.57	25,037.74	0.00	19,882.68 5,155.06	417.51 1.67%	1.20%
Honeywell International Inc (TICKER: HON - CUSIP:438516106)	47.00	225.89	10,616.83	0.00	9,312.46 1,304.37	212.44 2.00%	0.51%
Industrial Select Sector SPDR Fund (TICKER: XLI - CUSIP:81369Y704)	146.00	131.76	19,236.96	0.00	15,156.53 4,080.43	277.25 1.44%	0.92%
Intercontinental Exchange Inc (TICKER: ICE - CUSIP:45866F104)	36.00	149.01	5,364.36	0.00	3,659.03 1,705.33	64.80 1.21%	0.26%
Invesco S&P 500 Equal Weight ETF (TICKER: RSP - CUSIP:46137V357)	736.00	175.23	128,969.28	0.00	129,991.22 -1,021.94	1,956.29 1.52%	6.18%
iShares Biotechnology ETF (TICKER: IBB - CUSIP:464287556)	69.00	132.21	9,122.49	0.00	9,000.17 122.32	26.84 0.29%	0.44%
iShares Core S&P 500 ETF (TICKER: IVV - CUSIP:464287200)	666.00	588.68	392,060.88	0.00	260,946.44 131,114.44	5,091.57 1.30%	18.74%
iShares Semiconductor ETF (TICKER: SOXX - CUSIP:464287523)	42.00	215.49	9,050.58	0.00	10,731.84 -1,681.26	60.69 0.67%	0.43%
JPMorgan Chase & Co (TICKER: JPM - CUSIP:46625H100)	41.00	239.71	9,828.11	0.00	4,788.32 5,039.79	205.00 2.09%	0.47%
Lowe's Cos Inc (TICKER: LOW - CUSIP:548661107)	67.00	246.80	16,535.60	0.00	7,798.34 8,737.26	308.20 1.86%	0.79%
Masco Corp (TICKER: MAS - CUSIP:574599106)	65.00	72.57	4,717.05	0.00	3,816.38 900.67	75.40 1.60%	0.23%
Materials Select Sector SPDR Fund (TICKER: XLB - CUSIP:81369Y100)	147.00	84.14	12,368.58	0.00	11,253.38 1,115.20	237.11 1.92%	0.59%

Portfolio Holdings on December 31, 2024 (continued)

	Number of Shares	Share price	Market Value	Accrued Income	Cost Basis / Unrealized G/L	Est. Ann. Inc. /Yield at Market	% of Account
xxxx4790 SCMHF Unrestricted Fund (continued)							
Equity (continued)							
<i>US Large Cap Equities (continued)</i>							
McDonald's CORP (TICKER: MCD - CUSIP:580135101)	42.00	289.89	12,175.38	0.00	10,139.00 2,036.38	297.36 2.44%	0.58%
Microsoft CORP (TICKER: MSFT - CUSIP:594918104)	66.00	421.50	27,819.00	0.00	12,714.83 15,104.17	219.12 0.79%	1.33%
Mondelez International Inc (TICKER: MDLZ - CUSIP:609207105)	121.00	59.73	7,227.33	56.87	6,830.28 397.05	227.48 3.15%	0.35%
Palo Alto Networks Inc (TICKER: PANW - CUSIP:697435105)	78.00	181.96	14,192.88	0.00	3,630.12 10,562.76	0.00	0.68%
PepsiCo Inc (TICKER: PEP - CUSIP:713448108)	28.00	152.06	4,257.68	37.94	2,908.92 1,348.76	151.76 3.56%	0.21%
Pfizer Inc (TICKER: PFE - CUSIP:717081103)	291.00	26.53	7,720.23	0.00	7,507.36 212.87	500.52 6.48%	0.37%
Qualcomm Inc (TICKER: QCOM - CUSIP:747525103)	27.00	153.62	4,147.74	0.00	3,854.65 293.09	91.80 2.21%	0.20%
Real Estate Select Sector SPDR Fund (TICKER: XLRE - CUSIP:81369Y860)	307.00	40.67	12,485.69	0.00	11,820.28 665.41	428.57 3.43%	0.60%
Salesforce Inc (TICKER: CRM - CUSIP:79466L302)	28.00	334.33	9,361.24	11.20	6,416.45 2,944.79	44.80 0.48%	0.45%
Skyworks Solutions Inc (TICKER: SWKS - CUSIP:83088M102)	42.00	88.68	3,724.56	0.00	4,497.09 -772.53	117.60 3.16%	0.18%
SPDR S&P Regional Banking ETF (TICKER: KRE - CUSIP:78464A698)	167.00	60.35	10,078.45	0.00	9,987.50 90.95	261.35 2.59%	0.48%
SPDR S&P Semiconductor ETF (TICKER: XSD - CUSIP:78464A862)	53.00	248.45	13,167.85	0.00	10,250.41 2,917.44	26.02 0.20%	0.63%
Technology Select Sector SPDR Fund (TICKER: XLK - CUSIP:81369Y803)	172.00	232.52	39,993.44	0.00	26,327.55 13,665.89	262.13 0.66%	1.92%

Portfolio Holdings on December 31, 2024 (continued)

	Number of Shares	Share price	Market Value	Accrued Income	Cost Basis / Unrealized G/L	Est. Ann. Inc. /Yield at Market	% of Account
xxxx4790 SCMHF Unrestricted Fund (continued)							
Equity (continued)							
US Large Cap Equities (continued)							
Union Pacific Corp (TICKER: UNP - CUSIP:907818108)	28.00	228.04	6,385.12	0.00	4,345.16 2,039.96	150.08 2.35%	0.31%
UnitedHealth Group INC (TICKER: UNH - CUSIP:91324P102)	18.00	505.86	9,105.48	0.00	4,350.75 4,754.73	151.20 1.66%	0.44%
Utilities Select Sector SPDR Fund (TICKER: XLU - CUSIP:81369Y886)	180.00	75.69	13,624.20	0.00	12,259.59 1,364.61	403.56 2.96%	0.65%
Walmart Inc (TICKER: WMT - CUSIP:931142103)	177.00	90.35	15,991.95	36.73	5,729.13 10,262.82	146.91 0.92%	0.77%
Walt Disney Co (TICKER: DIS - CUSIP:254687106)	104.00	111.35	11,580.40	52.00	10,555.65 1,024.75	104.00 0.90%	0.56%
Total US Large Cap Equities			\$1,090,032.52	\$208.54	\$752,168.63 \$337,863.89	\$15,457.65 1.42%	52.21%
US Small/Mid Cap Equities							
iShares Core S&P Mid-Cap ETF (TICKER: IJH - CUSIP:464287507)	905.00	62.31	56,390.55	0.00	43,689.78 12,700.77	748.44 1.33%	2.69%
iShares Core S&P Small-Cap ETF (TICKER: IJR - CUSIP:464287804)	205.00	115.22	23,620.10	0.00	20,932.55 2,687.55	484.62 2.05%	1.13%
Total US Small/Mid Cap Equities			\$80,010.65	\$0.00	\$64,622.33 \$15,388.32	\$1,233.06 1.54%	3.83%
Total Equity			\$1,791,920.94	\$208.54	\$1,361,642.42 \$430,278.52	\$35,303.07 1.97%	85.82%
Total xxxx4790 SCMHF Unrestricted Fund			\$2,087,404.08	\$670.52	\$1,657,100.30 \$430,303.78	\$50,708.64 2.43%	100.00%

Your Transaction Detail

Trade Date	Transaction Description	Amount	Accrued Income	Realized G/L
xxxx4790 SCMHF Unrestricted Fund				
Disbursements				
<i>Fees</i>				
December 26, 2024	Periodic Fee: Taken Monthly \$1,014.77 (11/16/24 to 12/15/24) Flat Percentage Fee: \$1,014.77 Based on Average Daily Market Value of \$3,057,955.14 @ an annual rate of 1.00% = \$30,579.55. Monthly Fee: \$2,548.30. Discount of \$1,095.77 applied (based on a rate of 43.00%). Account 52634790: \$1,014.77. Charged now \$1,014.77. Note: Fee is computed based on all accounts in the fee group. The remainder of the fee may be collected from other accounts in the fee group.	-1,014.77		0.00
Total Fees		-\$1,014.77	\$0.00	\$0.00
Total Disbursements		-\$1,014.77	\$0.00	\$0.00
Corporate Actions/Income				
<i>Dividends</i>				
November 29, 2024	Cash Dividend 0.03473659 USD DoubleLine Total Return Bond Fund For 4,307.736 Units Due on 11/29/24 With Ex Date 11/29/24, CUSIP 258620103, TICKER DBLTX	149.64		0.00
December 2, 2024	Daily Rate Income on Vanguard High-Yield Corporate Fund For Period of 11/01/24 to 11/30/24 Due on 12/02/24, CUSIP 922031760, TICKER VWEAX	105.56		0.00
December 2, 2024	Daily Rate Income on Federated Hermes Government Obligations Fund For Period of 11/01/24 to 11/30/24 Due on 12/02/24, CUSIP 608919718, TICKER GOFXX	78.78		0.00
December 2, 2024	Daily Rate Income on Artisan High Income Fund For Period of 11/01/24 to 11/30/24 Due on 12/02/24, CUSIP 04314H568, TICKER APHFX	249.83		0.00
December 4, 2024	Cash Dividend 0.1504 USD Vanguard Mortgage-Backed Securities ETF For 503.00 Shares Due on 12/04/24 With Ex Date 12/02/24, CUSIP 92206C771, TICKER VMBS	75.65		0.00
December 4, 2024	Cash Dividend 0.1817 USD Vanguard Intermediate-Term Treasury ETF For 94.00 Shares Due on 12/04/24 With Ex Date 12/02/24, CUSIP 92206C706, TICKER VGIT	17.08		0.00
December 4, 2024	Cash Dividend 0.2992 USD Vanguard Intermediate-Term Corporate Bond ETF For 750.00 Shares Due on 12/04/24 With Ex Date 12/02/24, CUSIP 92206C870, TICKER VCIT	224.40		0.00

Your Transaction Detail (continued)

Trade Date	Transaction Description	Amount	Accrued Income	Realized G/L
xxxx4790 SCMHF Unrestricted Fund (Continued)				
Corporate Actions/Income (Continued)				
<i>Dividends (Continued)</i>				
December 5, 2024	Cash Dividend 0.164857 USD iShares Preferred and Income Securities ETF For 368.00 Shares Due on 12/05/24 With Ex Date 12/02/24, CUSIP 464288687, TICKER PFF	60.67		0.00
December 5, 2024	Cash Dividend 0.108258 USD iShares iBonds Dec 2033 Term Corporate ETF For 1,132.00 Shares Due on 12/05/24 With Ex Date 12/02/24, CUSIP 46436E130, TICKER IBDY	122.55		0.00
December 5, 2024	Cash Dividend 0.103754 USD iShares iBonds Dec 2032 Term Corporate ETF For 1,161.00 Shares Due on 12/05/24 With Ex Date 12/02/24, CUSIP 46436E312, TICKER IBDX	120.46		0.00
December 6, 2024	Cash Dividend 1.13 USD Honeywell International Inc For 22.00 Shares Due on 12/06/24 With Ex Date 11/15/24, CUSIP 438516106, TICKER HON	24.86		0.00
December 10, 2024	Cash Dividend 0.5275 USD Emerson Electric Co For 44.00 Shares Due on 12/10/24 With Ex Date 11/15/24, CUSIP 291011104, TICKER EMR	23.21		0.00
December 12, 2024	Cash Dividend 0.83 USD Microsoft CORP For 66.00 Shares Due on 12/12/24 With Ex Date 11/21/24, CUSIP 594918104, TICKER MSFT	54.78		0.00
December 16, 2024	Cash Dividend 0.2 USD Alphabet Inc For 109.00 Shares Due on 12/16/24 With Ex Date 12/09/24, CUSIP 02079K305, TICKER GOOGL	21.80		0.00
December 16, 2024	Cash Dividend 1.77 USD McDonald's CORP For 42.00 Shares Due on 12/16/24 With Ex Date 12/02/24, CUSIP 580135101, TICKER MCD	74.34		0.00
December 16, 2024	Cash Dividend 0.3034 USD DFA Emerging Markets Small Cap Portfolio For 1,748.117 Units Due on 12/16/24 With Ex Date 12/13/24, CUSIP 233203611, TICKER DEMSX	530.38		0.00
December 16, 2024	Cash Dividend 0.282 USD Fidelity Emerging Markets Index Fund For 9,872.623 Units Due on 12/16/24 With Ex Date 12/13/24, CUSIP 316146331, TICKER FPAIX	2,784.08		0.00
December 17, 2024	Cash Dividend 2.1 USD UnitedHealth Group INC For 18.00 Shares Due on 12/17/24 With Ex Date 12/09/24, CUSIP 91324P102, TICKER UNH	37.80		0.00
December 19, 2024	Cash Dividend 0.85 USD Qualcomm INC For 27.00 Shares Due on 12/19/24 With Ex Date 12/05/24, CUSIP 747525103, TICKER QCOM	22.95		0.00
December 20, 2024	Cash Dividend 0.35783 USD iShares Semiconductor ETF For 42.00 Shares Due on 12/20/24 With Ex Date 12/17/24, CUSIP 464287523, TICKER SOXX	15.03		0.00

Your Transaction Detail (continued)

Trade Date	Transaction Description	Amount	Accrued Income	Realized G/L
xxxx4790 SCMHF Unrestricted Fund (Continued)				
Corporate Actions/Income (Continued)				
<i>Dividends (Continued)</i>				
December 20, 2024	Cash Dividend 0.062366 USD iShares Biotechnology ETF For 69.00 Shares Due on 12/20/24 With Ex Date 12/17/24, CUSIP 464287556, TICKER IBB	4.30		0.00
December 20, 2024	Cash Dividend 2.134185 USD iShares Core S&P 500 ETF For 666.00 Shares Due on 12/20/24 With Ex Date 12/17/24, CUSIP 464287200, TICKER IVV	1,421.37		0.00
December 20, 2024	Cash Dividend 1.137595 USD iShares Core S&P Small-Cap ETF For 205.00 Shares Due on 12/20/24 With Ex Date 12/17/24, CUSIP 464287804, TICKER IJR	233.21		0.00
December 20, 2024	Cash Dividend 0.266898 USD iShares Core S&P Mid-Cap ETF For 905.00 Shares Due on 12/20/24 With Ex Date 12/17/24, CUSIP 464287507, TICKER IJH	241.54		0.00
December 20, 2024	Cash Dividend 0.1191 USD Goldman Sachs Emerging Markets Equity Insights Fund For 9,530.579 Units Due on 12/20/24 With Ex Date 12/19/24, CUSIP 38144N569, TICKER GERIX	1,135.09		0.00
December 23, 2024	Cash Dividend 0.106836 USD iShares iBonds Dec 2033 Term Corporate ETF For 1,132.00 Shares Due on 12/23/24 With Ex Date 12/18/24, CUSIP 46436E130, TICKER IBDY	120.94		0.00
December 23, 2024	Cash Dividend 0.104113 USD iShares iBonds Dec 2032 Term Corporate ETF For 1,161.00 Shares Due on 12/23/24 With Ex Date 12/18/24, CUSIP 46436E312, TICKER IBDX	120.88		0.00
December 23, 2024	Cash Dividend 0.176683 USD iShares Preferred and Income Securities ETF For 368.00 Shares Due on 12/23/24 With Ex Date 12/18/24, CUSIP 464288687, TICKER PFF	65.02		0.00
December 23, 2024	Cash Dividend 1.378 USD Fidelity International Index Fund For 3,951.083 Units Due on 12/23/24 With Ex Date 12/20/24, CUSIP 315911727, TICKER FSPSX	5,444.59		0.00
December 24, 2024	Cash Dividend 0.7 USD Skyworks Solutions Inc For 42.00 Shares Due on 12/24/24 With Ex Date 12/03/24, CUSIP 83088M102, TICKER SWKS	29.40		0.00
December 26, 2024	Cash Dividend 0.469827 USD iShares Currency Hedged MSCI EAFE ETF For 5,987.00 Shares Due on 12/26/24 With Ex Date 12/20/24, CUSIP 46434V803, TICKER HEFA	2,812.85		0.00

Your Transaction Detail (continued)

Trade Date	Transaction Description	Amount	Accrued Income	Realized G/L
xxxx4790 SCMHF Unrestricted Fund (Continued)				
Corporate Actions/Income (Continued)				
<i>Dividends (Continued)</i>				
December 26, 2024	Cash Dividend 0.621655 USD Health Care Select Sector SPDR Fund For 182.00 Shares Due on 12/26/24 With Ex Date 12/23/24, CUSIP 81369Y209, TICKER XLV	113.14		0.00
December 26, 2024	Cash Dividend 0.602361 USD Consumer Staples Select Sector SPDR Fund For 101.00 Shares Due on 12/26/24 With Ex Date 12/23/24, CUSIP 81369Y308, TICKER XLP	60.84		0.00
December 26, 2024	Cash Dividend 0.433128 USD Consumer Discretionary Select Sector SPDR Fund For 17.00 Shares Due on 12/26/24 With Ex Date 12/23/24, CUSIP 81369Y407, TICKER XLY	7.36		0.00
December 26, 2024	Cash Dividend 0.699989 USD Energy Select Sector SPDR Fund For 285.00 Shares Due on 12/26/24 With Ex Date 12/23/24, CUSIP 81369Y506, TICKER XLE	199.50		0.00
December 26, 2024	Cash Dividend 0.206245 USD Financial Select Sector SPDR Fund For 225.00 Shares Due on 12/26/24 With Ex Date 12/23/24, CUSIP 81369Y605, TICKER XLF	46.41		0.00
December 26, 2024	Cash Dividend 0.385957 USD Technology Select Sector SPDR Fund For 172.00 Shares Due on 12/26/24 With Ex Date 12/23/24, CUSIP 81369Y803, TICKER XLK	66.38		0.00
December 26, 2024	Cash Dividend 0.254403 USD Communication Services Select Sector SPDR Fund For 149.00 Shares Due on 12/26/24 With Ex Date 12/23/24, CUSIP 81369Y852, TICKER XLC	37.91		0.00
December 26, 2024	Cash Dividend 0.43361 USD Real Estate Select Sector SPDR Fund For 307.00 Shares Due on 12/26/24 With Ex Date 12/23/24, CUSIP 81369Y860, TICKER XLRE	133.12		0.00
December 26, 2024	Cash Dividend 0.4124 USD SPDR S&P Regional Banking ETF For 167.00 Shares Due on 12/26/24 With Ex Date 12/23/24, CUSIP 78464A698, TICKER KRE	68.87		0.00
December 26, 2024	Cash Dividend 0.108889 USD SPDR S&P Semiconductor ETF For 53.00 Shares Due on 12/26/24 With Ex Date 12/23/24, CUSIP 78464A862, TICKER XSD	5.77		0.00

Your Transaction Detail (continued)

Trade Date	Transaction Description	Amount	Accrued Income	Realized G/L
xxxx4790 SCMHF Unrestricted Fund (Continued)				
Corporate Actions/Income (Continued)				
<i>Dividends (Continued)</i>				
December 26, 2024	Cash Dividend 0.627989 USD Utilities Select Sector SPDR Fund For 180.00 Shares Due on 12/26/24 With Ex Date 12/23/24, CUSIP 81369Y886, TICKER XLU	113.04		0.00
December 26, 2024	Cash Dividend 0.670132 USD Industrial Select Sector SPDR Fund For 146.00 Shares Due on 12/26/24 With Ex Date 12/23/24, CUSIP 81369Y704, TICKER XLI	97.84		0.00
December 26, 2024	Cash Dividend 0.444309 USD Materials Select Sector SPDR Fund For 147.00 Shares Due on 12/26/24 With Ex Date 12/23/24, CUSIP 81369Y100, TICKER XLB	65.31		0.00
December 27, 2024	Cash Dividend 0.3119 USD Vanguard Intermediate-Term Corporate Bond ETF For 750.00 Shares Due on 12/27/24 With Ex Date 12/24/24, CUSIP 92206C870, TICKER VCIT	233.93		0.00
December 27, 2024	Cash Dividend 0.1901 USD Vanguard Intermediate-Term Treasury ETF For 94.00 Shares Due on 12/27/24 With Ex Date 12/24/24, CUSIP 92206C706, TICKER VGIT	17.87		0.00
December 27, 2024	Cash Dividend 0.1522 USD Vanguard Mortgage-Backed Securities ETF For 503.00 Shares Due on 12/27/24 With Ex Date 12/24/24, CUSIP 92206C771, TICKER VMBS	76.56		0.00
December 27, 2024	Cash Dividend 0.61965 USD Invesco S&P 500 Equal Weight ETF For 736.00 Shares Due on 12/27/24 With Ex Date 12/23/24, CUSIP 46137V357, TICKER RSP	456.06		0.00
December 30, 2024	Cash Dividend 1.34 USD Union Pacific Corp For 28.00 Shares Due on 12/30/24 With Ex Date 12/09/24, CUSIP 907818108, TICKER UNP	37.52		0.00
December 31, 2024	Cash Dividend 0.45 USD Intercontinental Exchange Inc For 36.00 Shares Due on 12/31/24 With Ex Date 12/16/24, CUSIP 45866F104, TICKER ICE	16.20		0.00
Total Dividends		\$18,276.67	\$0.00	\$0.00

Your Transaction Detail (continued)

Trade Date	Transaction Description	Amount	Accrued Income	Realized G/L
xxxx4790 SCMHF Unrestricted Fund (Continued)				
Corporate Actions/Income (Continued)				
<i>Other</i>				
December 16, 2024	Stock Split 2:1 Credit 39.00 Palo Alto Networks Inc For 39.00 Shares of Palo Alto Networks Inc Due on 12/17/24 With Ex Date 12/16/24, CUSIP 697435105, TICKER PANW	0.00		0.00
Total Other		\$0.00	\$0.00	\$0.00
Total Corporate Actions/Income		\$18,276.67	\$0.00	\$0.00
Cash Sweep Activity				
December 31, 2024	Sweep purchases totaling 17,500.48 units of Federated Hermes Government Obligations Fund for Main (Capital) (28 Transactions)	-17,500.48		0.00
Total Cash Sweep Activity		-\$17,500.48	\$0.00	\$0.00
Total xxxx4790 SCMHF Unrestricted Fund		-\$238.58	\$0.00	\$0.00

Information

Positions on this statement are shown as of the trade date. Proceeds from the sale of securities and costs for the purchase of securities are not transacted through your account until the actual settlement date of the trade which may be up to three business days after the trade date or longer for certain securities with an extended settlement date. All cash activity will be shown as of the settlement date.

Privacy Statement

Federal law requires us to tell you how we collect, share, and protect your personal information. Our privacy policy has not changed and you may review our policy and practices with respect to your personal information at <https://www.firstinterstatebank.com/support/disclosures/privacy.html> or we will mail you a free copy upon request if you call us at 1-888-752-3332.