

FOUNDATION BOARD



Rob Johnson
President



Sue Belish
Vice President



Vicki Jorgenson
Secretary



Chuck Burgess
Treasurer



Ryan Franklin
Director



William E. Doughty, MD
Director



Yvonne Gatley
Director



Joshua Scott, MD
SMH Physician Rep



Rosemary Rieder
SMH Auxiliary Rep



Wendy Smith
Director



Richard Garber
SMH Trustee Rep

Thank You to all of our donors who filled the last year with so much gratitude. Please view our updated list of donors at sheridanhospital.org/foundation or with the QR code below.

WAYS TO GIVE

There are many ways to help ensure The Foundation's Mission continues, all of which are tax deductible in accordance with section 501(c)3 of the IRS code.

Have questions about getting involved or maximizing your gift? Please reach out to The Foundation at 307.673.2418 today!



HEALING AT HOME

Healthcare is often a journey. For you, the patient, it is a personal experience throughout care, beginning at admission or diagnosis and concluding with hospital discharge or maintenance of diagnosis. Your experience spans throughout your care and interactions with our healthcare organization. In the past year, funds supported healing throughout the journey, from surgery outcomes and daily care to outside of the hospital and encouraging patients' comfort and healing at home.

Thank You

Your generosity and support provide excellent patient care for all.



CORPORATE SPONSORS

Platinum



Gold



GRATITUDE REPORT 2023



DECADES OF CARING FOR YOU
RIGHT HERE AT HOME

Past

Established in 1977, The Foundation has created a lasting legacy, as well as strategic goals for the future. It is The Foundation’s mission to support the Hospital as we collectively strive always to “serve our community with excellent patient-centered care.” Through that mission, we support excellent healthcare right here at home; the **25** specialties, the **100** physicians and advanced care practitioners, more than **800** staff and growing – ready to serve you in the community they too live in and care for. Your support continues to enable The Foundation to financially assist Sheridan Memorial Hospital with strategic and vital healthcare projects today and into the future.

2000

- 2000: Patient wing expansion completed with a community philanthropy effort of \$3 million.
- 2004: Griffith Emergency Department opened, thanks to community and partner support of \$2.5 million.
- 2007: Watt Dialysis Center opened, thanks to the generous donation by The Joe & Arlene Watt Foundation and support from the Bob Bishop Dialysis Endowment.

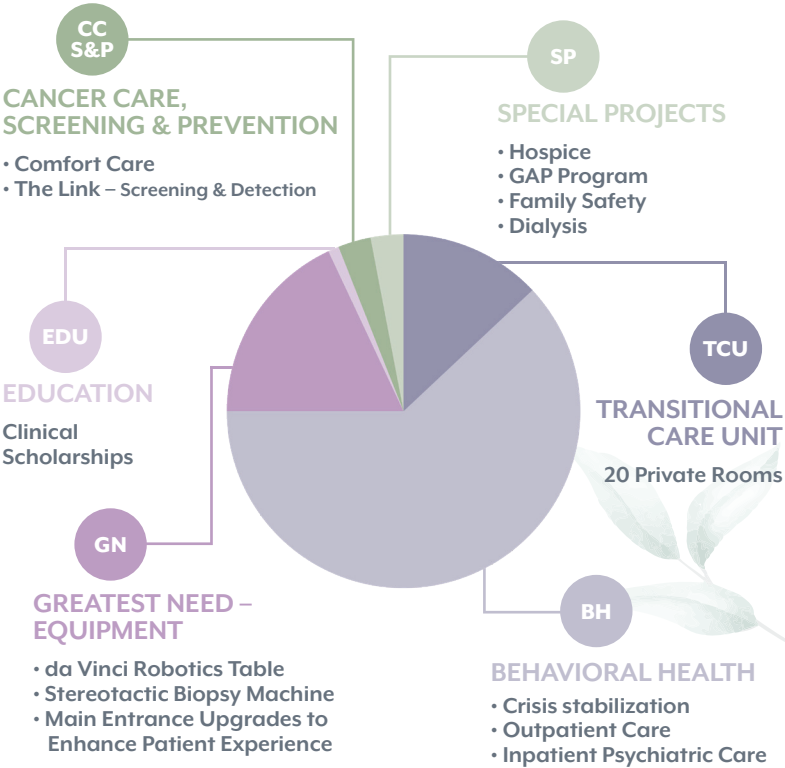
2010

- 2013: Welch Cancer Center celebrated its grand opening, thanks to \$6 million in community support, allowing for cancer diagnosis and treatment.
- 2016: Intensive Care Unit opened expanding capacity from six to 11 private rooms, which became pivotal to our community’s health during the pandemic.



YOUR CONTRIBUTIONS
AT WORK IN 2023

Present



2020

- 2022: Transitional Care Unit opened, transforming the TCU capacity from eight to 20 private patient rooms.
- 2023: Growing For You campaign kickoff with a focus on a critical need for behavioral health and emergency care in our growing community.
- 2026: Behavioral Health – Crisis Stabilization Unit to open.



GROWING FOR YOU

Future

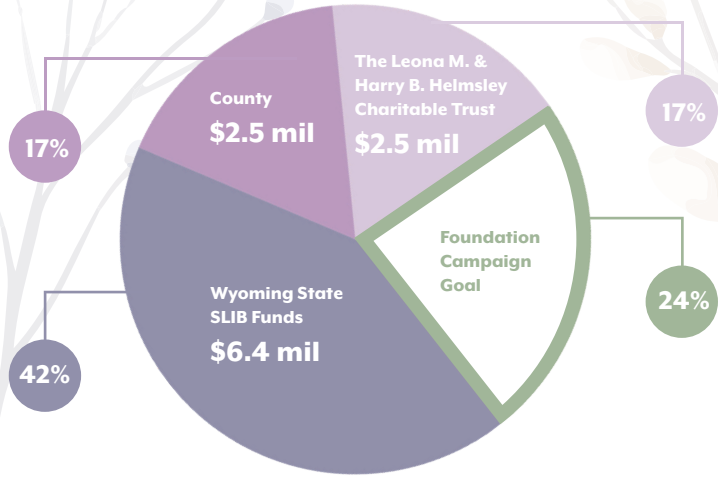
BEHAVIORAL HEALTH & EMERGENCY MEDICINE

Healthcare for our community continues to grow and diversify. To meet these critical needs, Sheridan Memorial Hospital is developing a Crisis Stabilization Unit to create a separate physical environment to better address the behavioral and mental health needs of patients in crisis.

Project includes:

- ✓ Psychiatric care and crisis stabilization for immediate behavioral and mental health needs
- ✓ Compassionate care from specially trained clinical staff
- ✓ Therapeutic setting and resources to initiate behavioral and mental health treatment
- ✓ Strengthen continuum of care within the community health system

Total Committed: 76%



Total Project Estimate: \$15 million

