

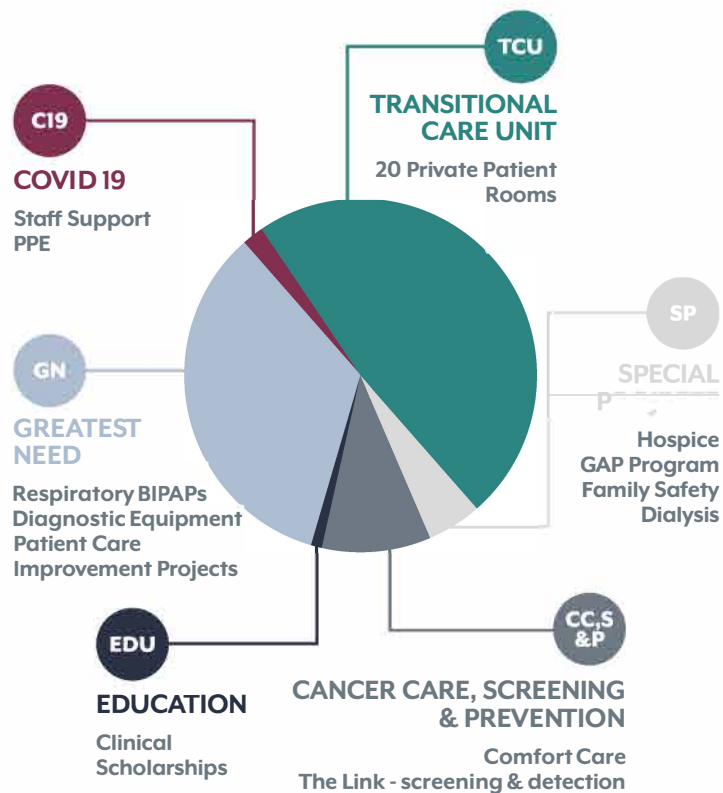
”

It is a privilege to be a part of this organization, and each of us at Sheridan Memorial Hospital takes great pride in serving the Sheridan community. We seek to care for and meet patient needs right here at home.

Please join The Foundation in this investment in healthcare for our community.

Mike McCafferty, Chief Executive Officer

YOUR CONTRIBUTIONS AT WORK



Thank You to all of our donors who filled the last year will so much gratitude. Please view our updated list of donors at sheridanhospital.org/foundation or:



CORPORATE SPONSORS

Platinum



Gold



WAYS TO GIVE



There are many ways to help ensure the Foundation's Mission continues, all of which are tax deductible in accordance with section 501(c)3 of the IRS code.

Have questions about getting involved or maximizing your gift? Please reach out to The Foundation at 673.2418 today!

Use the QR Code to learn more online



GRATITUDE REPORT 2022

EXCELLENCE RIGHT HERE AT HOME

Each day, The Foundation strives to live its mission to cultivate community involvement and support the hospital’s vision through advocacy, financial support, and stewardship. Through that mission, we support excellent healthcare right here at home; the 25 specialties, the 100 physicians and advanced care practitioners, more than 750 staff members – and growing – ready to serve you in the community they too live in and care for. It’s driving 10 minutes instead of two hours to visit your loved ones after a procedure in the middle of winter, growing with our community as it changes, and supporting Sheridan Memorial Hospital because you believe in the best healthcare available for your neighbors, friends, and family.

FOUNDATION DIRECTORS FY22

- Richard Garber, *President*
- Rob Johnson, *Vice President*
- Vicki Jorgenson, *Secretary*
- Matt Ebzery, *Treasurer*
- Sue Belish, *Director*
- William E. Doughty, MD, *Director*
- JT Grainger, *Director*
- Sara S. Maguire, MD, *SMH Physician Rep*
- Stella Montano, *SMH Auxiliary Rep*
- Wendy Smith, *Director*
- Joe Wright, *SMH Trustee Rep*



YOU MADE IT POSSIBLE

The response from our community in support of the new Transitional Care Expansion is truly remarkable. We are grateful to the more than 1,000 local foundations, donors, physicians, and employee partners who contributed to the Transitional Care Expansion project. We celebrate the opening of this expansion and our community’s generosity that made this all possible. Your support ensures families and friends have a recuperative and supportive place to heal following an injury, surgery, or serious illness – right here at home.



HEALING AT HOME

Healthcare is often a journey. For you, the patient, it is a personal experience throughout care, beginning at admission or diagnosis and concluding with hospital discharge or maintenance of diagnosis. Your experience spans throughout your care and interactions with our healthcare organization. In the past year, our annual events focused on funds supporting healing outside of the hospital and encouraging patients’ comfort and healing at home.



The Foundation’s 13th Annual Golf Tournament raised more than \$20,000 that went toward SMH’s Patient GAP Fund, which helps ensure successful recovery for patients after hospital care.

With hundreds of participants, volunteers, and cancer survivors at the 2022 Link, this year’s \$50,000 raised will go toward the Comfort Care Program at the Welch Cancer Center (WCC). These one-time grants enable the WCC team to help with unexpected costs associated with providing additional comfort and care after a cancer diagnosis.

Throughout the last year, these funds have provided:

