



TRANSITIONAL CARE EXPANSION

Keep Your Loved Ones Close at Sheridan Memorial Hospital



THE FOUNDATION

Much like the foundation of a sturdy home, The Sheridan Memorial Hospital Foundation works with donors like you to strengthen our community hospital. Established in 1977, The Foundation has created a lasting legacy, as well as strategic goals for the future. It is The Foundation's mission to support Sheridan Memorial Hospital as we collectively strive to always "serve our community with excellent patient-centered care." Contributions to The Foundation ensure healthcare is here when you, your family, and your neighbors need it most.

VISION

When people think of excellent healthcare, they think of Sheridan.

MISSION

To serve our community with excellent patient-centered care.

CULTURE

In an environment of **TEAMWORK** we will keep our patients **SAFE**. We will help them get **BETTER**. We will treat them with **RESPECT**. We will be **KIND** to them and we will continually **IMPROVE** our processes for excellent patient care.

TRANSITIONAL CARE PATIENT JOURNEY





What is Transitional Care?

Transitional Care provides a recuperative and supportive place to heal following an injury, surgery, or serious illness. From changes to one's daily schedule to the adjustments necessary to return home—our care team of nurses, case management, and therapists manage your transitions and help you or your family member regain a level of independence for a safe return home.

Your Care Team

- » Physical Therapy
- » Occupational Therapy
- » Speech Therapy
- » Respiratory Therapy
- » Nutritional Counseling & Dietary Planning
- » Nursing
- » Wound Care
- » Fall Prevention
- » Case Management & Social Services

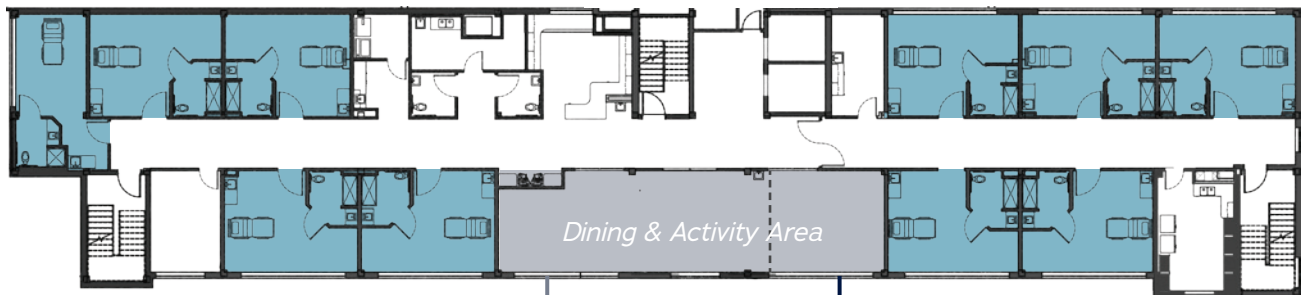
Why Expand Now

- » Meet community and regional demand for patient care
- » Ensure patients have a place to recuperate and rehabilitate before returning home
- » Provide private patient rooms
- » Re-purposed space on the 2nd and 3rd floors allows Transitional Care for our patients in its own separate safe location



YOUR CONTRIBUTIONS WILL CREATE

3RD FLOOR



2ND FLOOR



PRIVATE
DINING
AREA



REHAB
SPACES

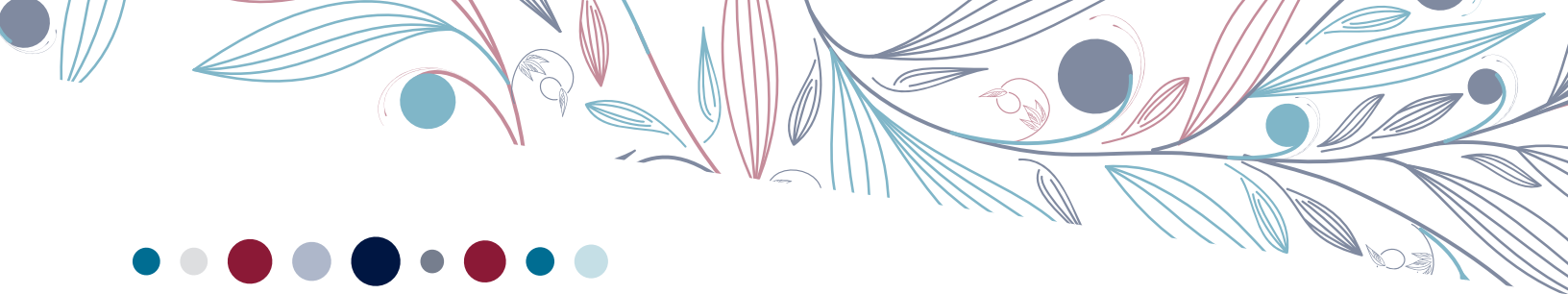


20
COMFORTABLE
PRIVATE
SUITES WITH
BATHROOMS



SEPARATE
FAMILY
MEETING &
CONSULTATION
ROOM





IMPROVING YOUR INDEPENDENCE

HELPING YOU TRANSITION HOME



DR. SY THICKMAN

In early January 2020, Dr. Sy Thickman stepped outside for his usual dog walk. Awaiting him was a thin layer of snow covering thick black ice; he slipped and fell as soon as he reached the street.

His friend called for an ambulance and, within 15 minutes, Dr. Thickman arrived at Sheridan Memorial Hospital (SMH). X-rays revealed a fractured hip. The next day, Thickman underwent a successful surgery and after a few days transferred to Transitional Care Unit (TCU).

This was his first hospitalization in his then 96 years. Dr. Thickman was admittedly worried, especially when he wasn't able to move his injured leg at all for many days.

"You begin to think occasionally of potential consequences that would not



*Dr. Sy Thickman and Dr. Bill Doughty
Project Donors*

be uncommon at this age," he said. "There was a period of hospitalization early on in which I wondered if I was going to be able to return to a normal way of life."

Enter: the TCU team. The nurses kept Dr. Thickman company, encouraged him to enjoy his meals in the community dining space with his fellow patients, and made him as comfortable as possible. The physical and occupational therapists worked on his mobility with their creative methods meant to mimic activities of daily living. The doctors monitored his progress. Everyone lifted his mood.

"I really had such comfort with the staff," Thickman said. "They came every day, and it was fun to expect them. Never did I have any concern that wasn't fulfilled. I felt in good hands, and I was able to—if you don't mind the expression—"have fun with it."

Today, at age 98, Dr. Thickman is able to walk without the assistance of a cane or walker. He attributes his complete recovery to the "excellent care" at Sheridan Memorial Hospital.



MARY SKRETTEBERG



When Mary Skretteberg severely broke her ankle in September 2019, the prescription of a prolonged hospital stay felt like insult added to injury for the 79-year-old. But when she was discharged two months later, she said goodbye to the staff at Sheridan Memorial Hospital's Transitional Care Unit (TCU) with tears in her eyes.

Skretteberg was surprised by the level of community she found at the TCU, a recuperative place to heal following an injury, surgery, or serious illness. "It was kind of like a college dormitory," she explained. "You're sharing a space: You're sharing the dining room, you're sharing the therapy, and you're sharing your pains and aches and worries."



By the end of her stay, Skretteberg felt at home in the halls of the TCU.

Today, Skretteberg is thrilled to be home with her husband. She continues to practice physical therapy and is on the "mend."

And she continues to think fondly of her TCU family. Skretteberg hopes the TCU is able to add more beds "because the community is growing, and once you're 50, 55, 60 years old, you start to break an ankle here, fall there—you need some time to recover in a hospital that doesn't feel like a hospital.

"The TCU feels like TLC."

JOIN WITH US AND MAKE A GIFT TODAY

An investment in Transitional Care is an investment in our community and your hospital. We are grateful to all those who live in our community and know this project and expansion of care will help Sheridan Memorial Hospital meet the needs of our patients for many years to come. Please join us and consider making a contribution today. Each and every dollar helps us get closer to the goal, and we will be excited to recognize you or a loved one with your gift.

“ As a speech pathologist since 1978, and now working with hospital patients, I absolutely know the value of expanding Transitional Care for our patients. This special time during their recovery process allows each person to participate in an individualized treatment program. It’s like a bridge between the hospital and a successful return home and to their community activities. Our hospital rehabilitation team does amazing work. I’m proud to be a part of this important care and have a positive effect on people’s lives. ”



*Tempe Murphy, CCC-SLP
Mark & Tempe Murphy Project Donors*

METHODS OF GIVING

There are many ways to help ensure the new Transitional Care Expansion is funded, all of which are tax-deductible in accordance with section 501 (c)(3) of the Internal Revenue Service code.

» Cash Gifts

» Pledges

The Foundation will work directly with a donor on the flexible-pledge options up to five years for the Transitional Care Expansion

» Stocks and Bonds/Life Insurance

» Easy On-Line Giving at sheridanhospital.org

» Planned Giving

Have you considered a planned gift? One that will have a meaningful outcome on Sheridan Memorial Hospital and its programs and services for future generations beyond your own lifetime and far into the future? Call our office today for more information on Planned Giving, 307-673-2418.

FOUNDATION DIRECTORS

- Richard Garber**, President
- Rob Johnson**, Vice President
- Rita Rohrbaugh**, Secretary
- Matt Ebzery**, Treasurer
- William E. Doughty, MD**, Director
- JT Grainger**, Director

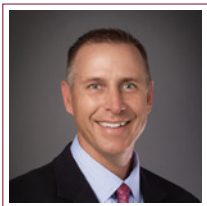
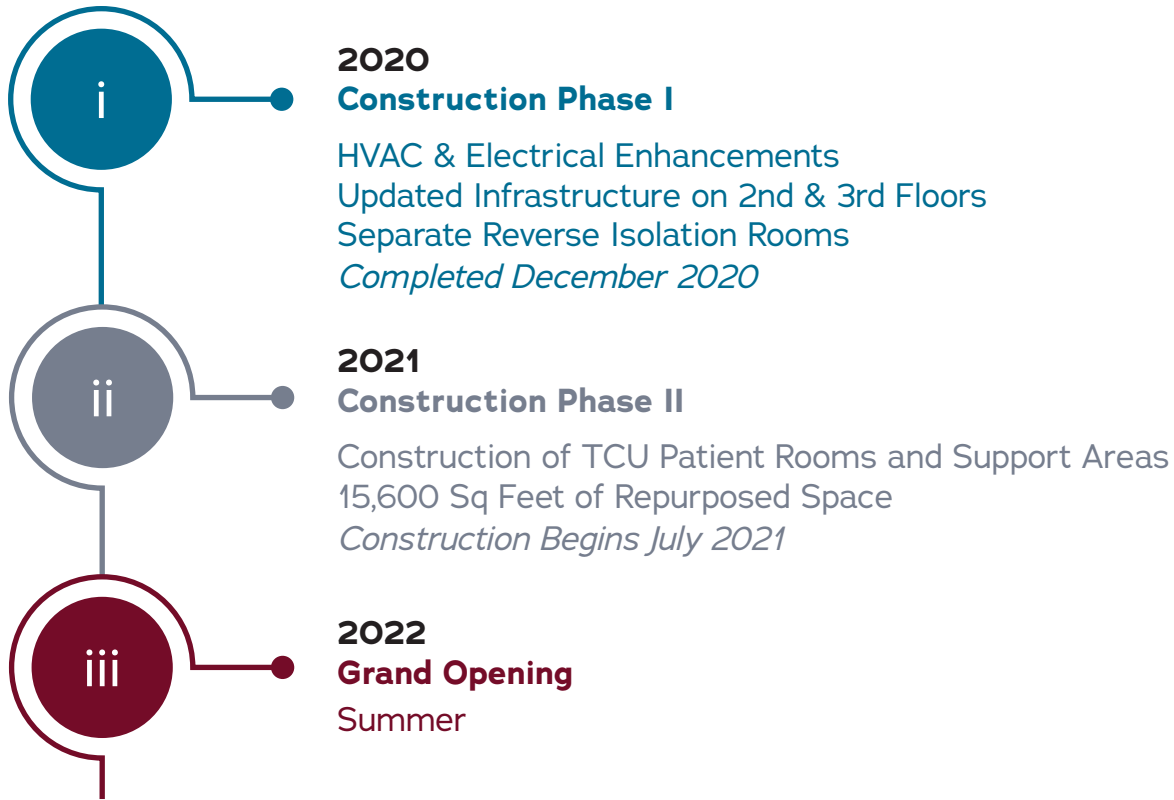


- Vicki Jorgenson**, Director
- Wendy Smith**, Director
- Sara S. Maguire, MD**, Physician Rep
- Stella Montano**, SMH Auxiliary Rep
- Timothy Scott, MD**, SMH Trustee Rep

CAMPAIGN LEADERSHIP

- Richard Garber**, Co-Chair
- William E. Doughty, MD**, Co-Chair
- Cody Sinclair**, Chief Development Officer
- Ada Kirven**, Director of Donor Relations

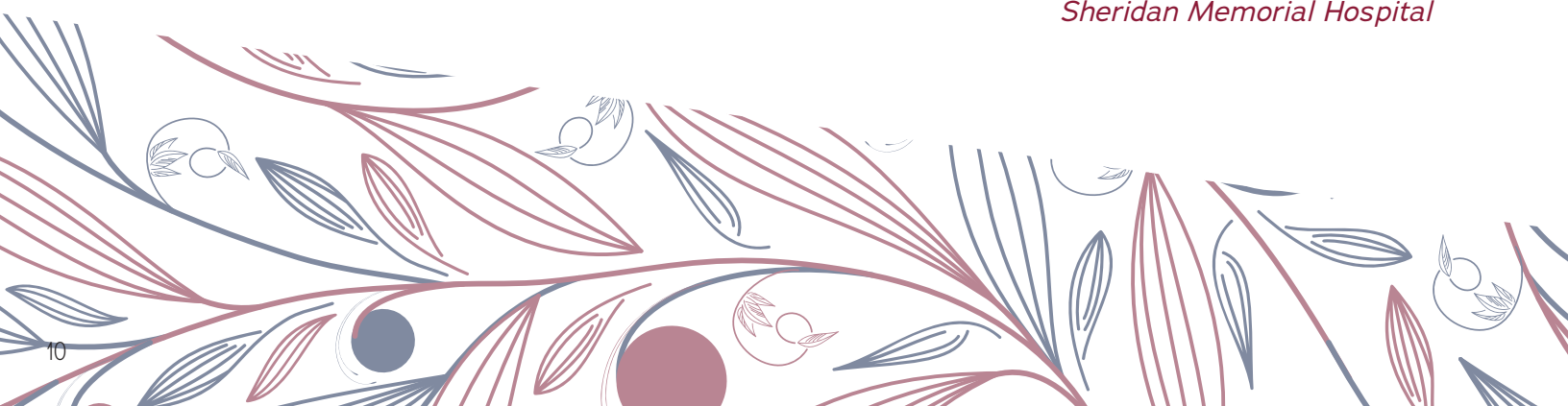
EXPANSION TIMELINE



“ It is a privilege to be a part of this organization, and each of us at Sheridan Memorial Hospital takes great pride in serving our patients with compassion. We also believe it is our responsibility to grow in ways that add value for our patients and appropriately meet the needs of the Sheridan community. The growth of our Transitional Care Services and the development of this new and expanded facility is an exciting opportunity for us to enhance the experience of our patients. This warm and private environment will be ideal for effective healing and strengthening while maintaining a high degree of safety and reliability in our patient’s care.

Please join me, The Sheridan Memorial Hospital Board of Trustees and the hundreds of Physicians and Staff who have made a gift to The Foundation as an investment in healthcare for our community. ”

*Mike McCafferty, Chief Executive Officer
Sheridan Memorial Hospital*



INVESTMENT IN COMMUNITY HEALTHCARE

\$1.6 Million
SLIB Funding

\$2 Million
Sheridan Memorial Hospital

\$4.4 Million

COMMITTED

COMMITTED

FOUNDATION CAMPAIGN

PROPOSED FUNDING

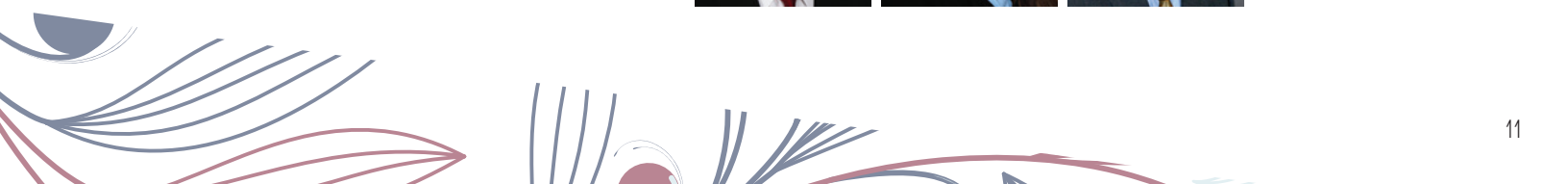
Cares Act Grant (Wyoming SLIB Board Funding)	1,600,000
Sheridan Memorial Hospital	2,000,000
Sheridan Memorial Hospital Foundation Fund-Raising Effort	4,400,000
	\$8,000,000

PROJECT DEVELOPMENT COSTS

Phase I Initial Infrastructure Preparation	1,600,000
Phase II Complete Construction, 2nd & 3rd Floors	5,700,000
Rehab & Medical Equipment and Room Furnishings	700,000
	\$8,000,000

HOSPITAL BOARD OF TRUSTEES

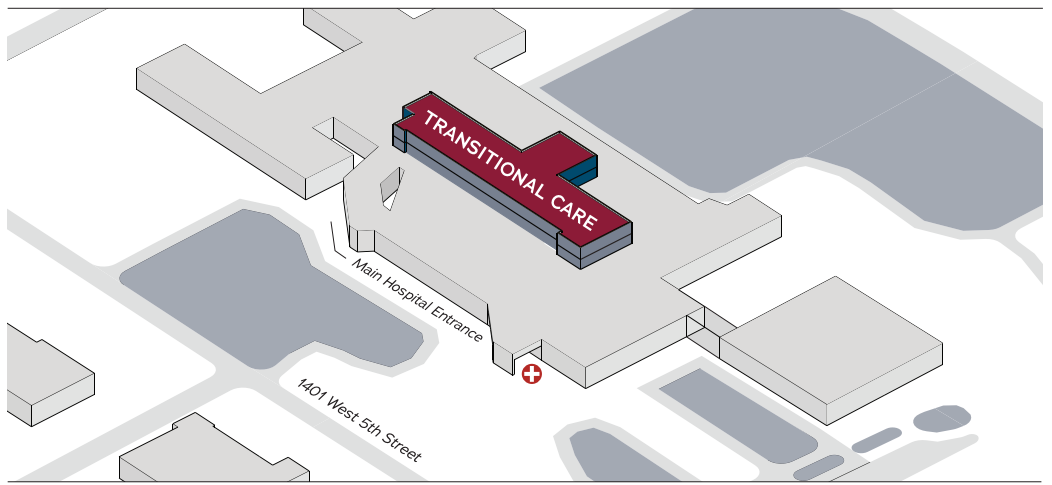
David Smith, Chairman
Timothy Scott, MD, Vice Chairman
Gene Davis, Treasurer
Shirley Coulter, Secretary
Kevin Bailey, Trustee
Andrea Mellinger, Trustee
Joe Wright, Trustee





SHERIDAN
MEMORIAL HOSPITAL

**TRANSITIONAL CARE
EXPANSION**



PO Box 391
Sheridan WY 82801
sheridanhospital.org/foundation
307.673.2418