



BEAUTIFUL JOURNEY

Beautiful Journey is a workshop designed to help women manage the skin and hair side effects of cancer treatment. Come join us for an afternoon of rejuvenation. Together, we will explore the options available for cosmetics, skin care and head coverings.

2019 WORKSHOPS: 1:00–3:00 PM

January 30

April 24

July 31

October 30

Attend Beautiful Journey for free.

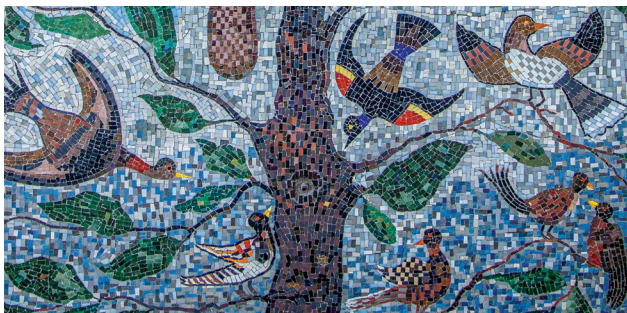
Call **307.674.6022** to reserve your spot today.



SHERIDAN
MEMORIAL HOSPITAL
Welch Cancer Center

1585 West 5th Street | Sheridan, WY 82801

307.674.6022 | welchcancercenter.org



Beautiful Journey is facilitated by Lynn Weber-Loe, licensed esthetician, with Derma Bella Progressive Skin Care, and Amy Herbst, licensed cosmetologist, with New Image Salon. Lynn has special training in oncology esthetics and Amy specializes in hair styling, scarves and wigs. Both women previously volunteered for the American Cancer Society's Look Good Feel Better program.



LYNN WEBER-LOE



AMY HERBST

THANK YOU TO OUR SPONSORS



LINDI SKIN[®]
skin care for life

Osmosis[®]
+PÜR MEDICAL SKINCARE